

## General Specifications

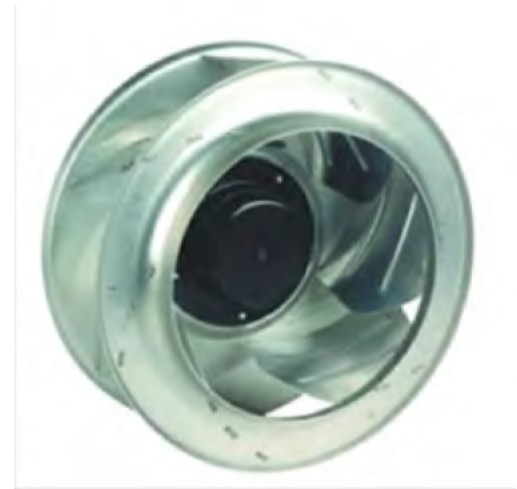
- ⌚ Material ----- Impeller: Sheet aluminium  
Pillow: Die-Cast Aluminum
- ⌚ Lead Wire ----- L -Red N-Black (Sensor)-Yellow (Control)-Brown  
GND-Blue
- ⌚ Life time -----50000 Hours Ball bearing
- ⌚ Storage Temperatur--- -25°C ~ +70°C (Non-condensing)
- ⌚ Bearing Type----- Ball Bearings
- ⌚ Speed Range----- ±5%
- ⌚ Part Numbering System

SFD-EC355B230H- **B R 1**

Waterproof level: 0=IP54, 1=IP55, 2=IP68

Sensor: 0=no, R=RD sensor, F=FG sensor, P=PWM sensor, T=Temperature sensor

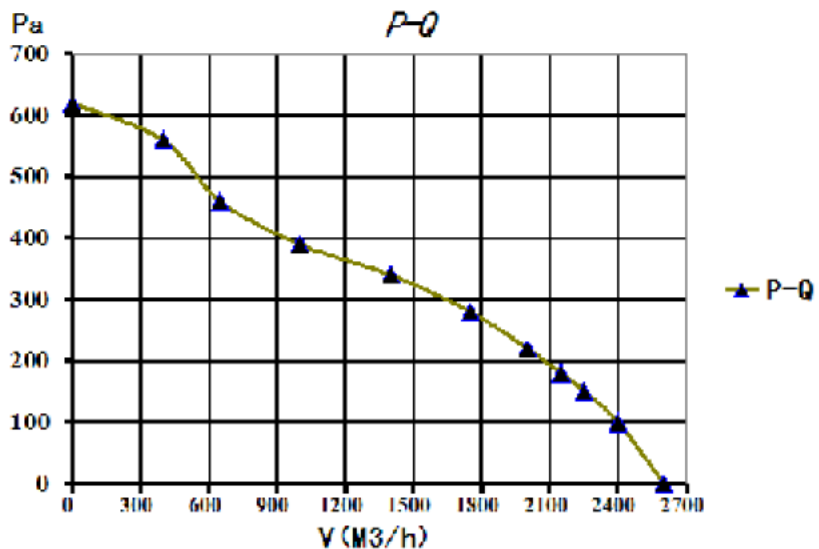
Bearing: S=sleeve bearing, B=ball bearing



## Φ355 mm backward curved

Model No.	Rated Voltage	Rated Current	Rated Input	Frecuen cy	Speed	Maximum Air Flow	Perm.amb temp	Noise
	AC	AMP	Watt	Hz	R.P.M	M3/h	°C	dB-A
FAN-EC3550B230H	230	3.8	195	50/60	1700	2600	-25-70	68

## Air Flow-Static Pressure Characteristics



## Dimensions(unit:mm/inch)

