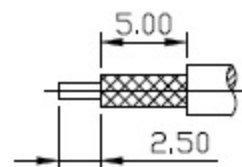
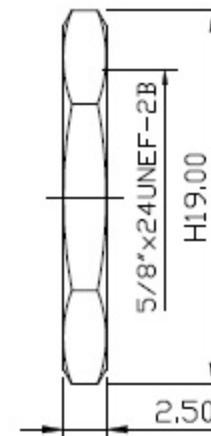
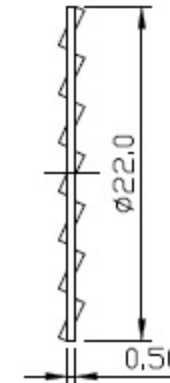
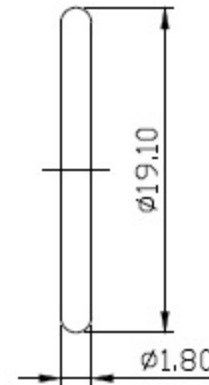
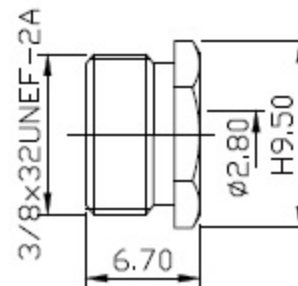
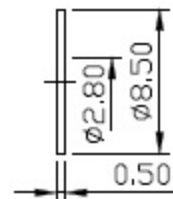
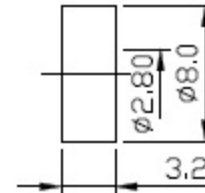
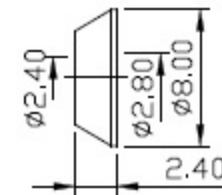
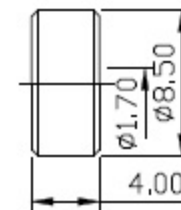
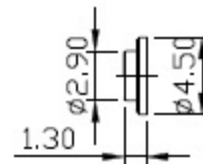
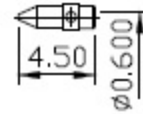


MATERIAL : BODY-BRASS
 INSULATOR-TEFLON
 SLEEVE-BRASS
 CONTACT-PHOSPHOR BRONZE
 WASHER-BRASS
 GASKET-SILICONE
 LOCK WASHER-BRASS
 NUT-BRASS
 GASKET-BRASS
 CONTACT-BRASS
 O-RING-SI RUBBER

FINISH : BODY-NICKEL PLATING
 SLEEVE-NICKEL PLATING
 NUT-NICKEL PLATING
 LOCK WASHER-NICKEL PLATING
 CONTACT-GOLD PLATING OVER NICKEL
 WASHER-NICKEL PLATING
 GASKET-NICKEL PLATING



SUGGEST STRIP DIMENSION

DIMENSIONS ARE IN MILLIMETERS		TOLERANCE		SCHMID-M	
· ×	±0.5	ANGLE ±3°	SCALE	2:1	
· × ×	±0.1		REV	A-0	
· × × ×	±0.05		DRAWN	DATE	99.04.15
			APPROVAL	DATE	
				TITLE	N Font Mount Bulkhead Jack Clamp for RG174u, RG188A/u, RG316u
				DRAWING NO	N-2223-TGN
				FILE NO	