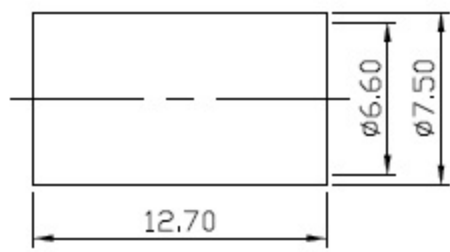
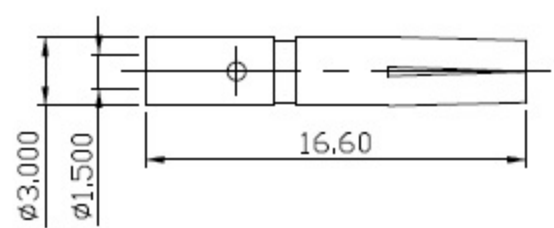
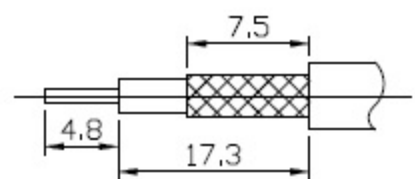


MATERIAL : CONTACT PIN-BRASS
 SLEEVE-BRASS
 BODY-BRASS
 INSULATOR-TEFLON
 O-RING-SI RUBBER
 LOCK WASHER-BRASS
 NUT-BRASS
 FERRULE-BRASS

FINISH : CONTACT PIN-GOLD PLATING OVER NICKEL
 SLEEVE-NICKEL PLATING
 BODY-NICKEL PLATING
 LOCK WASHER-NICKEL PLATING
 NUT-NICKEL PLATING
 FERRULE-NICKEL PLATING



DIMENSIONS ARE IN MILLIMETERS			SCHMID-M
TOLERANCE			
· × ±0.5	ANGLE ±3°	SCALE 3:1	TITLE N Straight Bulkhead Jack Crimp for LMR240
· × × ±0.1		REV A-0	DRAWING NO N-1226-TGN
· × × × ±0.05		DRAWN	DATE 92.07.23
APPROVAL	DATE		