



Type 38: 19" Enclosure Case

APPLICABLE AS TABLETOP OR STAND-ALONE ENCLOSURE

SYSTEM SOLUTIONS
BACKPLANES
ENCLOSURES
ROTARY SWITCHES
CABINETS

STANDARD VERSION OR INDIVIDUAL ENCLOSURE

YOU DEFINE

Use the standard version or set up your individual enclosure: flexible dimensions, colour combinations, side panel variations as well as accessories and integration of your elements.

STANDARD VERSION



The standard version of the Type 38 includes:

- › Top cover, bottom and side plates made of sheet steel, welded, powder-coated
- › Dimensions: Width: 19"
 - Height: 3 - 18 U
 - Depth: 320 - 1000 mm
- › Colour: RAL 7035 (optional: all RAL-colours)
- › Earthing kit
- › 19" assembly material 8pcs.-kit (optional 50pcs.-kit)
- › Installation dimensions acc. to IEC 60297
- › Protective connenctions acc. to VDE 0100/IEC 380

INDIVIDUAL DIMENSIONS



CUSTOMIZED ENCLOSURE CASES



Do you have special requirements?
We are happy to offer you a customized solution - even in small quantities.

Customized solution based on Type 38:
This enclosure case is used as control unit for ultrasonic welding system.

INDIVIDUAL COMPONENTS

MODIFY YOUR ENCLOSURE

Use numerous design options as well as accessories and integration of numerous components.

SIDE PANELS



Top cover, bottom plate and side panels can be customised depending on requirements:

- > Sheet steel, powder-coated
- > Quick locks for side and rear panels allow good accessibility from all sides
- > Colour combinations: all RAL-colours
- > Closed, perforated or with ventilation slots
- > Rear panel with cable bushing (3 U)

HANDLES



Depending on your requirements folding handles can be mounted into the side panels:

- > Folding handles with tray
- > Aluminium, powder-coated
- > Colour: black
- > Finger-shaped contour appearance
- > The handles are locked against vibration using a spring in both working and starting position.

VENTILATION



For an optimal heat extraction the side panels can be perforated or provided with ventilation slots:

- > Side panels
- > Top cover
- > Bottom plate

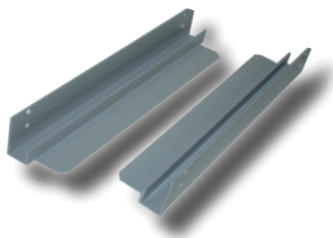
ROLLS AND FEETS



Make your enclosure movable or height-adjustable:

- › Rolls-kit: 4 pcs., thereof 2 pcs. are lockable
- › Feets-kit: 4 pcs., all 4 pcs. are height-adjustable

MOUNTING RAILS KITS



Even heavy components can be integrated with mounting rails:

- › Sheet steel, powder-coated
- › Incl. assembly material
- › Colours: RAL 7035, on request: matching the enclosure colour

CONFIGURATOR



Our configurator is available on request 24/7.

After a short introduction training you will be able to design your own Type38-enclosure. At the same time the configurator calculates the price and delivery time for you.

While you select your design in the configurator, you'll see a visual preview simultaneously. Finally, the offer and the 3D drawing can be downloaded in .step format.

Contact us for more information.



Headquartered in Wetzikon, Switzerland, Elma Electronic AG is a leader in servicing the worldwide electronic industry with electronic packaging solutions as well as precision rotary switches.

Founded in 1960, our core competence is the design and manufacturing of enclosures for the most demanding applications. Elma's world-renowned quality, reliability and cost effectiveness have always been the hallmark of our products and services.

We have the ability to respond rapidly, with superior solutions to our various customers' technical and logistical requirements in Aerospace, Defense, Communications, Security, Medical, Transportation, Research & Science and Industrial Automation.

We utilize local R&D, production and marketing capabilities in Switzerland, US, Germany, UK, France, Israel, China and Romania and we maintain a worldwide network of distribution partners in more than 22 countries.

Elma's Six Sigma quality level is reached through continuing improvement and adaptation of our methods, processes and procedures to meet the demand of our customers' ever changing requirements.

WHY CHOOSE ELMA?

Product Quality

The world leaders in their respective industries who set the standards for their markets choose Elma products for their designs.

Customization

Our proven business model is to perfectly adapt our products to the customers' exact requirements.

Global Resources

Our local presence on five continents ensures a close relation in the discourse of engineering, customization and marketing service.

Track Record

Our long term relationships with industry leading customers have solidified our understanding of the varied requirements of each marketplace.

QUALITY ASSURANCE

- ISO 9001:2008**
- ISO 14001:2004**
- OHSAS 18001:2007**
- ROHS, REACH**
- Environment**

Certificates

- Quality Management
- Environment Management
- Safety Management
- Declaration of Conformity
- Certificate of the Swiss Private Sector Energy Agency
- Conflict Minerals Avoidance Policy
- Counterfeit Materials Avoidance Policy

Elma Electronic AG

Hofstrasse 93
Postfach
CH-8620 Wetzikon
Tel. +41 44 933 41 11
Fax +41 44 933 42 15
sales@elma.ch

Elma Electronic GmbH

Stuttgarter Strasse 11
D-75179 Pforzheim
Tel. +49 7231 97 34 0
Fax +49 7231 97 34 97
info@elma.de

**Elma Electronic
France SA**

ZA du Buisson Rond
F-38460 Villemoirieu
Tel. +33 4 37 06 21 10
Fax +33 4 37 06 21 19
sales@elma-electronic.fr

**Elma Electronic UK Ltd.
Solutions House**

Fraser Road, Priory Business
Park
Bedford, MK44 3BF
Tel. +44 1234 838822
Fax +44 1234 836650
sales@elma.co.uk

**Elma Electronic
Romania SRL**

Chisoda, DN 59 Km 8 + 550 m
307221 Judet Timis
Tel. +40 256 306 046
Fax +40 256 249 820
info@elma.ro

**Elma Electronic
Israel Ltd.**

34, Modi'in St.
Sgula I.Z., Petach-Tikva,
49271 IL
Tel. +972 3 930 50 25
Fax +972 3 931 31 34
sales@elma.co.il

Elma Electronic Inc.

44350 Grimmer Blvd.
USA-Fremont, CA 94538
Tel. +1 510 656 3400
Fax +1 510 656 3783
sales@elma.com

**Elma Electronic Technology
(Shanghai) CO., LTD.**

Building#11, No.198, Chang Jian Road,
Bao Shan District, Shanghai, PRC,
200949, China
Tel. +86 21 5866 5908
Fax +86 21 5866 5918
sales@elmachina.com

Elma Asia Pacific Pte. Ltd.

115-A Commonwealth Drive
#03-14 Tanglin Halt Industrial Estate
149596 Singapore
Tel. +65 6479 8552
Fax +65 6479 8662
sales.elmaap@elma.com

YOUR LOCAL SOLUTION PARTNER