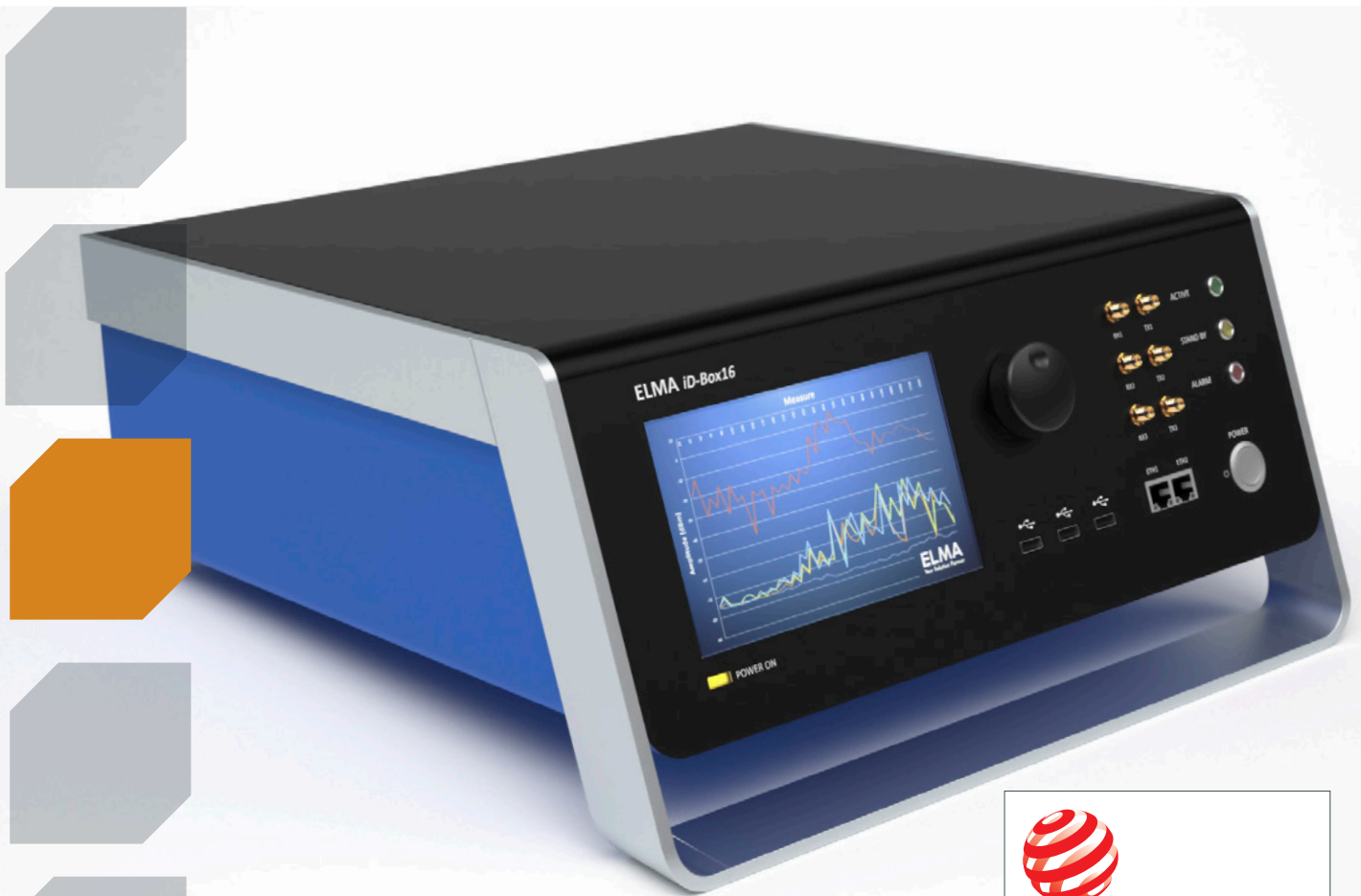


ELMA
Your Solution Partner



reddot award 2014
winner

iD-Box16

INDIVIDUAL DESIGN HOUSING FOR HIGH-QUALITY ELECTRONICS

SYSTEM SOLUTIONS
BACKPLANES
ENCLOSURES
ROTARY SWITCHES
CABINETS

STANDARD-INDEPENDENT ENCLOSURE PLATFORM

THE ULTIMATE INDIVIDUAL EXPERIENCE

"iD-Box16" is a versatile housing for high-quality electronic components. The novelty consists of a standard-independent system that not only addresses the individual needs of the end user but also adapts its size to reflect the application and its needs.

NO SPACE WASTED

The housing adapts to your electronics dimensions.

A CLEVER CONSTRUCTION

The additional internal housing has been completely eliminated thanks to a simple sheet-metal bracket. This makes the product even more modular in terms of its manufacture. The aluminum frame does not just act as a handle; in addition to integrating the bolt joint, it also offers stability and flows around the housing in an extremely elegant way.

READABILITY OF THE HMI-INTERFACE

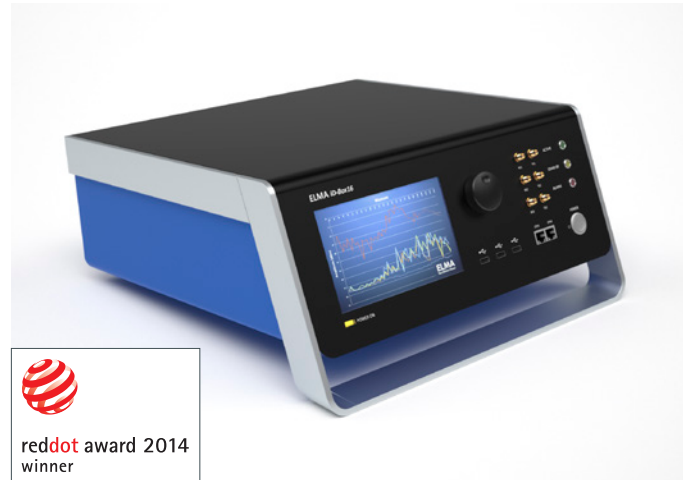
With an ergonomic approach the iD-Box16 allows the end-user to use the front panel elements either in a sitting or standing position comfortably thanks to the sloping front. It also provides design freedom, very much in line with the modular principle.

HIGH DESIGN AESTHETICS

With fewer screws and its flowing forms, the housing has a minimalist and clean look. Materials such as anodized aluminum give the housing a premium appeal and appearance. The housing's properties are just as unique as its customers.

HANDLING AND ASSEMBLY

The set up of this product is a piece of cake and the assembly is as fast as never before! In addition, Elma offers fully integrated system solutions.



RED DOT DESIGN AWARD

The international design competition recognizes outstanding design in the areas of product design, communication design and design concepts. The "red dot" is an internationally recognized quality label for excellent design.

In the year 2014 have 1816 manufacturers, designers and architects from 53 countries submitted their latest products and projects. The jury consists of 40 experts and award the best works from over 4800 designs.



STANDARD-INDEPENDENT ENCLOSURE PLATFORM

THE ULTIMATE INDIVIDUAL EXPERIENCE

Size (mm)**You define the dimensions:**

- › Height
- › Width
- › Depth

Colors**You define the color combination for:**

- › Base plate
- › Cover
- › Frame
- › Rear panel
- › Front panel

Design & Interface**You define which parts are printed and what features you want to incorporate into your front.**

- › Displays
- › Switches
- › Touch-function
- › LED's
- › Printing: labeling, logo, photorealistic prints

EMC**You define the right protection of your enclosure. We offer different levels of EMC protection.**

- › **Increased EMC level:** contact points ensure adequate shielding.
- › **Basic EMC level:** electrically-bonded enclosure parts, without additional gaskets.

Cooling**You define if cooling is needed**

- › Thermal analysis service: to reduce your development process
- › Convection cooled: we have a comprehensive range of built-in fan solutions

Interior**You define what electronics to be installed:**

- › Mounting possibilities: Nuts, bolts
- › Power supplies
- › Cabling

ENCLOSURES WILL LOOK EXACTLY HOW YOU WANT THEM TO LOOK LIKE

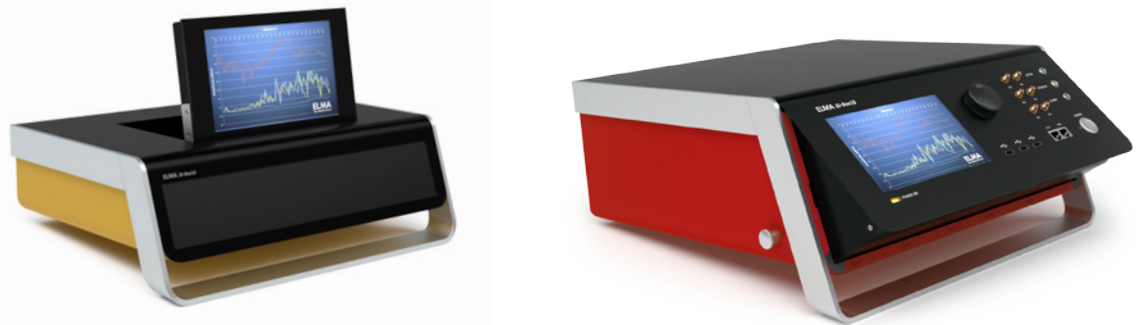
SIZES



COLOURS



FUNCTIONS



SUPPORT DURING THE ENTIRE PROCESS

APPLICATION EXPERIENCE AND KNOW-HOW SINCE 1960



We offer:

- › Design and feasibility studies
- › Thermal analysis
- › 2D and 3D data
- › Prototyping
- › Series production
- › Electronic integration
- › Testing
- › Logistics and packaging

We have the application know-how for YOUR customized design enclosure

Contact us at sales@elma.ch



Headquartered in Wetzikon, Switzerland, Elma Electronic AG is a leader in servicing the worldwide electronic industry with electronic packaging solutions as well as precision rotary switches.

Founded in 1960, our core competence is the design and manufacturing of enclosures for the most demanding applications. Elma's world-renowned quality, reliability and cost effectiveness have always been the hallmark of our products and services.

We have the ability to respond rapidly, with superior solutions to our various customers' technical and logistical requirements in Aerospace, Defense, Communications, Security, Medical, Transportation, Research & Science and Industrial Automation.

We utilize local R&D, production and marketing capabilities in Switzerland, US, Germany, UK, France, Israel, China and Romania and we maintain a worldwide network of distribution partners in more than 22 countries.

Elma's Six Sigma quality level is reached through continuing improvement and adaptation of our methods, processes and procedures to meet the demand of our customers' ever changing requirements.

WHY CHOOSE ELMA?

Product Quality

The world leaders in their respective industries who set the standards for their markets choose Elma products for their designs.

Customization

Our proven business model is to perfectly adapt our products to the customers' exact requirements.

Global Resources

Our local presence on five continents ensures a close relation in the discourse of engineering, customization and marketing service.

Track Record

Our long term relationships with industry leading customers have solidified our understanding of the varied requirements of each marketplace.

QUALITY ASSURANCE

- ISO 9001:2008**
- ISO 14001:2004**
- OHSAS 18001:2007**
- ROHS, REACH**
- Environment**

- Quality Management
- Environment Management
- Safety Management
- Declaration of Conformity
- Certificate of the Swiss Private Sector Energy Agency
- Conflict Minerals Avoidance Policy
- Counterfeit Materials Avoidance Policy

Certificates

Elma Electronic AG

Hofstrasse 93
Postfach
CH-8620 Wetzikon
Tel. +41 44 933 41 11
Fax +41 44 933 42 15
sales@elma.ch

Elma Electronic GmbH

Stuttgarter Strasse 11
D-75179 Pforzheim
Tel. +49 7231 97 34 0
Fax +49 7231 97 34 97
info@elma.de

**Elma Electronic
France SA**

ZA du Buisson Rond
F-38460 Villemoirieu
Tel. +33 4 37 06 21 10
Fax +33 4 37 06 21 19
sales@elma-electronic.fr

**Elma Electronic UK Ltd.
Solutions House**

Fraser Road, Priory Business
Park
Bedford, MK44 3BF
Tel. +44 1234 838822
Fax +44 1234 836650
sales@elma.co.uk

**Elma Electronic
Romania SRL**

Chisoda, DN 59 Km 8 + 550 m
307221 Judet Timis
Tel. +40 256 306 046
Fax +40 256 249 820
info@elma.ro

**Elma Electronic
Israel Ltd.**

34, Modi'in St.
Sgula I.Z., Petach-Tikva,
49271 IL
Tel. +972 3 930 50 25
Fax +972 3 931 31 34
sales@elma.co.il

Elma Electronic Inc.

44350 Grimmer Blvd.
USA-Fremont, CA 94538
Tel. +1 510 656 3400
Fax +1 510 656 3783
sales@elma.com

**Elma Electronic Technology
(Shanghai) CO., LTD.**

Building#11, No.198, Chang Jian Road,
Bao Shan District, Shanghai, PRC,
200949, China
Tel. +86 21 5866 5908
Fax +86 21 5866 5918
sales@elmachina.com

Elma Asia Pacific Pte. Ltd.

115-A Commonwealth Drive
#03-14 Tanglin Halt Industrial Estate
149596 Singapore
Tel. +65 6479 8552
Fax +65 6479 8662
sales.elmaap@elma.com

YOUR LOCAL SOLUTION PARTNER