

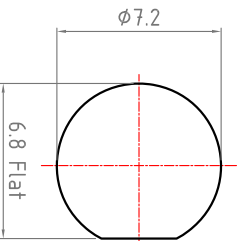
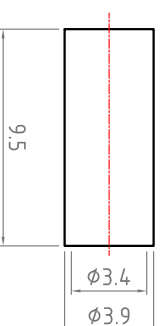
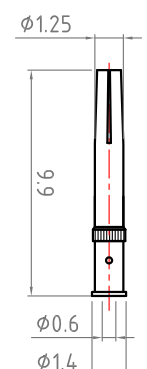
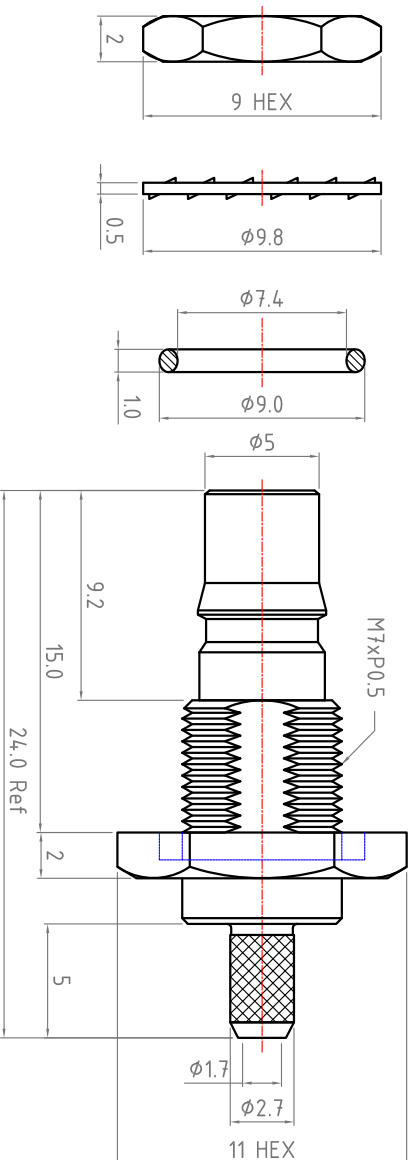
Revisions

Revisions B-1, B-2, ... On behalf of official Drawing
 Revisions 1, 2, 3, 4, ... On behalf of experiment's Drawing

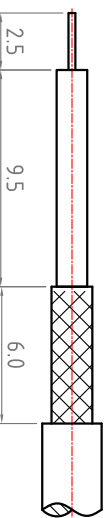
ISS	Symbol	Description	Date
B		CHE for New Drawing Frame & New PN System	2006/07/11

Note :

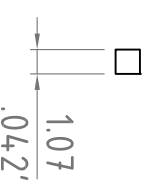
1. Single Crimp: Providing Recommended Dimensions for Ferrule and Center Pin.
 Dual Crimp: Providing Recommended Dimensions for Ferrule and Center Pin.
 Please Advise Single/Dual in Advance to Avoid any Inconvenience.
2. All Metal Materials are in Compliance with RoHS 2 Directive
 2011/65/EU Annex III Section 6 Paragraph.
3. Recommended Crimped Hand Tool : for Center Pin P/N - **HT-301G2**
 for Ferrule P/N - **HT-H116N**



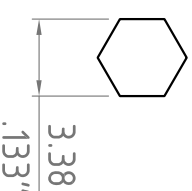
Recommended Mounting Hole



Recommended Cable Stripping Dimensions



Recommended Crimping Dimensions for Center Pin



Recommended Crimping Dimensions for Ferrule

Finish : [Plating Thickness Unit in Micro Inch(μ)]

1. Nickel Plating Thickness : 80 μ "
2. Gold Plating Thickness : Gold Flash

ITEM	Description	Material	Finish	Part Number	QTY
7	Nut	Brass	Finish 1		
6	Washer	Brass	Finish 1		
5	O-Ring	Si-Rubber	Red		
4	Ferrule	Brass	Finish 1		
3	Pin	Brass	Finish 1/2		
2	Insulator	PTFE	None		
1	Body	Brass	Finish 1		

Scale	Abbr.	Date	Rev.
NTS	ST	2013/02/19	B

Drawn	Checked	Approved

DWG. NO.	TITLE
QMA-1208d-TGN	QMA Straight Dual Crimp Jack RG174,188,316;B7805A;URM95 Cable

