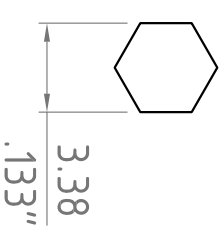
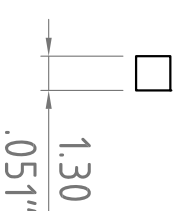
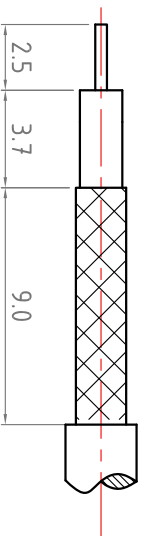
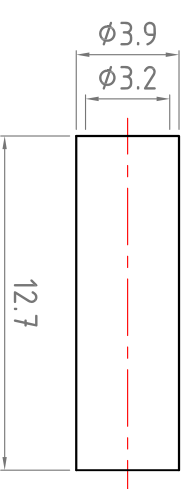
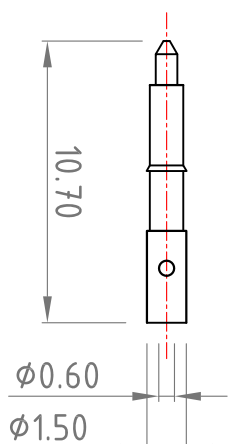
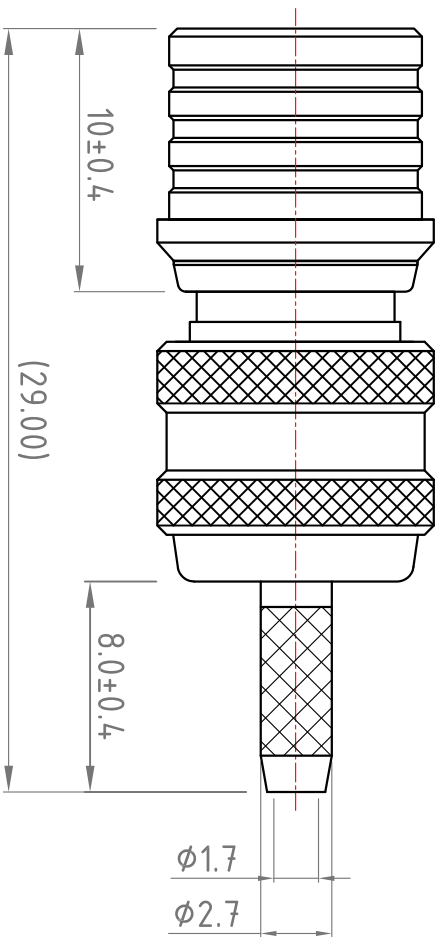


Revisions

ISS	Symbol	Description	Date
B		CHE for New Drawing Frame & New PN System	2006/07/11

Notes:

1. Single Crimp: Providing recommended dimensions for ferrule.
Dual Crimp: Providing recommended dimensions for ferrule and center pin.
Please advise Single/Dual in advance to avoid any inconvenience.
2. All metal material is in compliance with RoHS Directive 2002/95/EC Annex 4 (1) Section 6 paragraph.
3. Recommended Crimped Hand Tool : for Ferrule P/N - **HT-H116N**



Recommended Cable Stripping Dimensions

Finish : [Plating Thickness Unit in Micro Inch(μI)]
 1. Nickel Plating Thickness : 80μI
 2. Gold plating Thickness : Gold Flash

Recommended Crimping Dimensions for Center Pin

Recommended Crimping Dimensions for Ferrule

*Change new drawing frame in Blue Color since 2009/07/01 , to comply with Company CIS Policy.

ROHS COMPLIANCE

ITEM	Description	Material	Finish	Part Number	QTY
6					
5					
4	Ferrule	Brass	Finish 1		
3	Pin	Brass	Finish 1/2		
2	Insulator	PTFE	None		
1	Body	Brass	Finish 1		

Scale	Abbr.	Date	Rev.
NTS	ST	2012/09/05	B

Drawn	Checked	Approved

DWG. NO.	TITLE
QMA-1105d-TGN	QMA Straight Crimp Plug for RG174 Cable

Customer P/N: