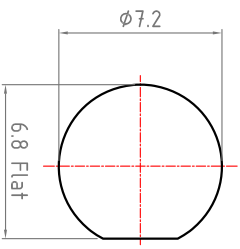
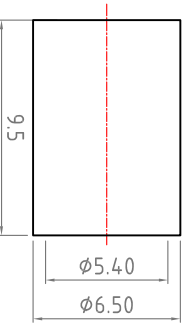
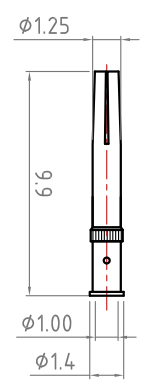
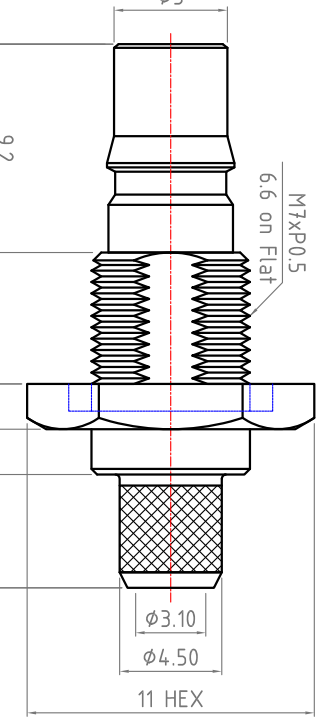
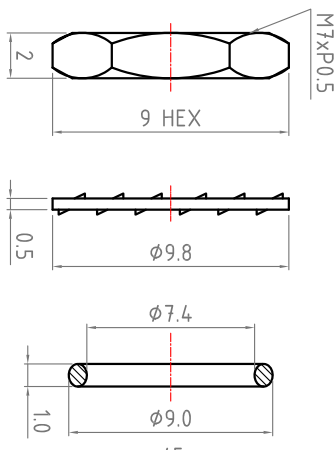


Revisions

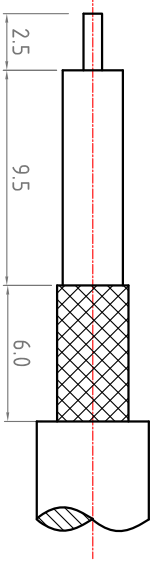
ISS	Symbol	Description	Date
B		CHE for New Drawing Frame & New PN System	2006/07/11

Outline Drawing

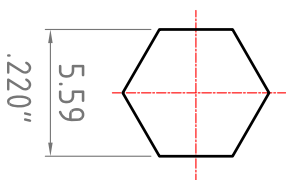
- Note :**
1. Single Crimp: Providing recommended dimensions for ferrule.
 2. All metal material is in compliance with RoHS Directive 2002/95/EC Annex 4 (1) Section 6 paragraph.
 3. Recommended Crimped Hand Tool : for Ferrule P/N - **HT-301Y**



Recommended Mounting Hole



Recommended Cable Stripping Dimensions



Recommended Crimped Dimensions for Ferrule

*Change new drawing frame in Blue Color since 2009/07/01, to comply with Company CIS Policy.

ROHS COMPLIANCE

ITEM	Description	Material	Finish	Part Number	QTY
7	Nut	Brass	Nickel		
6	Washer	Steel	Nickel		
5	O-Ring	Si-Rubber	Red		
4	Ferrule	Brass	Nickel		
3	Pin	P. Bronze	Gold		
2	Insulator	PTFE	None		
1	Body	Brass	Nickel		

Scale	Abbr.	Date	Rev.
NTS	ST	2012/06/11	B

Tolerances :		
X ±0.2		
.XX ±0.1		
.XXX±0.05		

DWG. NO.	QMA-1207d-TGN
TITLE	QMA Straight Single Crimp Jack
for	RG58,LMR195,HDF195,URM43;76,B9907,PSF1/6 Cable

