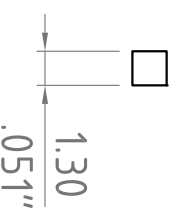
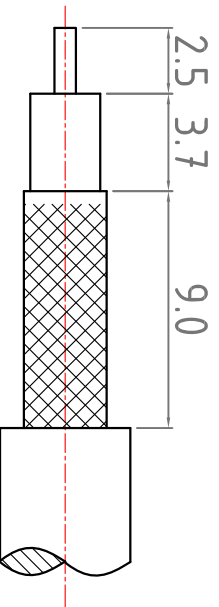
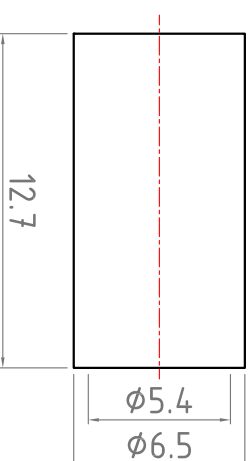
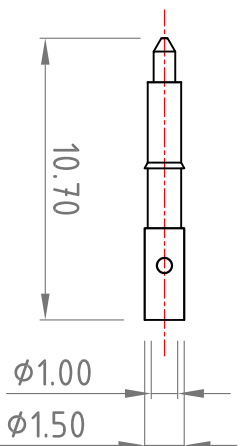
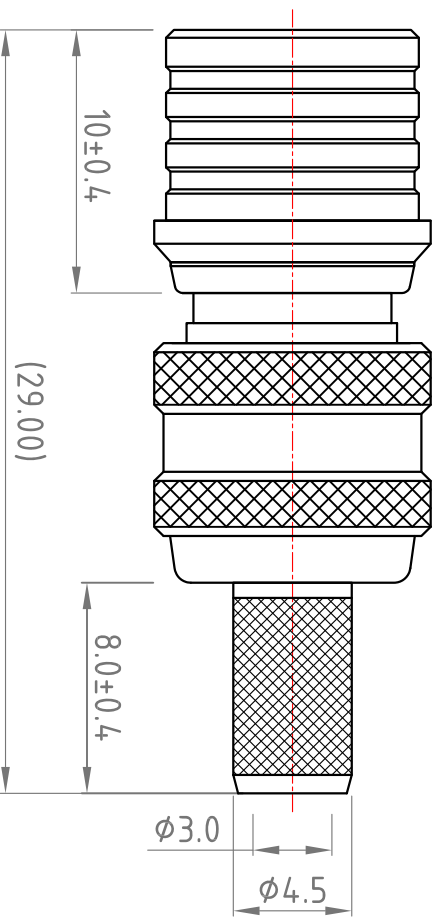


Revisions

ISS	Symbol	Description	Date
B		CHE for New Drawing Frame & New PN System	2006/07/11

Notes:

1. Single Crimp: Providing recommended dimensions for ferrule.
Dual Crimp: Providing recommended dimensions for ferrule and center pin.
Please advise Single/Dual in advance to avoid any inconvenience.
2. All metal materials are in compliance with RoHS Directive 2002/95/EC Annex 4 (1) Section 6 paragraph.
3. Recommended Crimped Hand Tool : for Ferrule P/N - **HT-301Y**



Recommended Cable Stripping Dimensions

Recommended Crimping Dimensions for Center Pin

Recommended Crimping Dimensions for Ferrule

Finish : [Plating Thickness Unit in Micro Inch(μ)]

1. Nickel Plating Thickness : 80_μ"
2. Gold plating Thickness : Gold Flash

*Change new drawing frame in Blue Color since 2009/07/01 , to comply with Company CIS Policy.

ROHS COMPLIANCE

ITEM	Description	Material	Finish	Part Number	QTY
6					
5					
4	Ferrule	Brass	Finish 1		
3	Pin	Brass	Finish 1/2		
2	Insulator	PTFE	None		
1	Body	Brass	Finish 1		

Scale	Abbr.	Date	Rev.
NTS	ST	2012/12/04	B

Tolerances :	All Dimensions in mm
X : ±0.2	 (Unless Otherwise Specified)
.XX : ±0.1	
.XXX±0.05	

Drawn	Checked	Approved

DWG. NO.	TITLE
QMA-1104d-TGN	QMA Straight Single Crimp Plug for RG58,LMR195,HDF195,URM43;76,B9907,PSF1/6 Cable