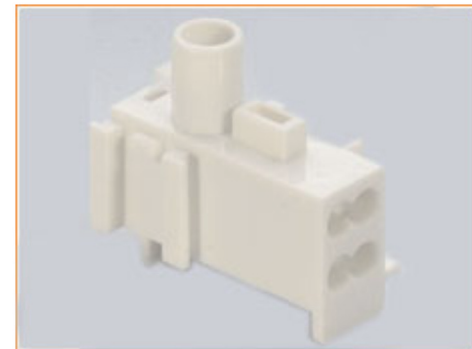


Standard	UL	CE
Rated Voltage	250V	300V
Rated Current	13A	20A
Wire range	20-14AWG	0.5-0.75mm ²
Withstanding voltage	AC3000V/1Min	
Torque	0.8Nm(10.6Lb-In.)	
Ambient temperature	(-)40°C to +105°C	
Housing	PA66, UL94V-0	
Screws	M3.5, steel, Cr ³⁺ + Zn plated	
Terminals	Brass, Ni-plated	



APPD. DWG. BRAUN DATE 2013/05/14		TOLERANCE ϕ $\frac{\text{max}}{\text{min}}$ SCALE UNIT M M PAGE 1 OF 1	SCHMID-M PART NAME Fuse Terminal Block PART NO. SM C09 71006 01
--	--	---	--

RoHS Compliant