

Product Caregories



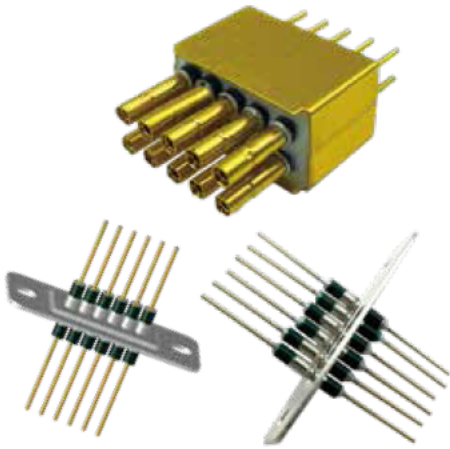
Tubular Ceramic Capacitors



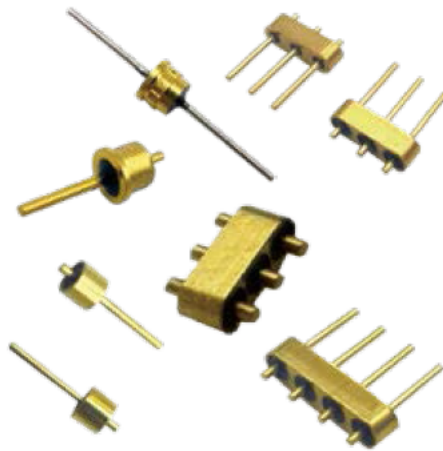
Solder-in Filters



Resin Sealed Bolt-in Filters



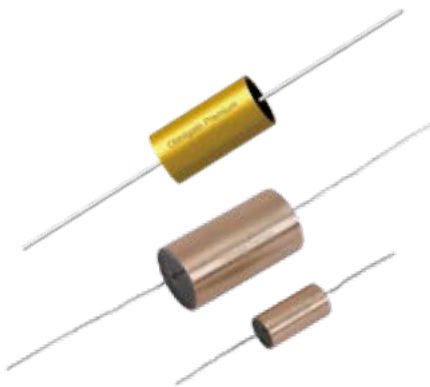
Filtered Arrays



Miniature RF Filters



Hermetically Sealed Filters



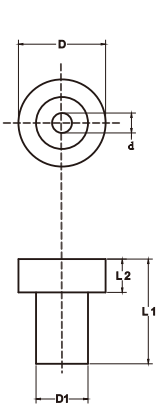
Obbligato Premium Audio Capacitors



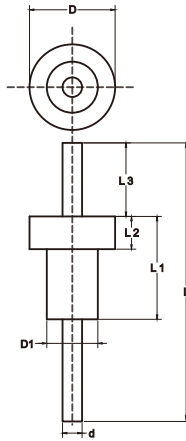
Discoidal Capacitors (Single/Multilayer)



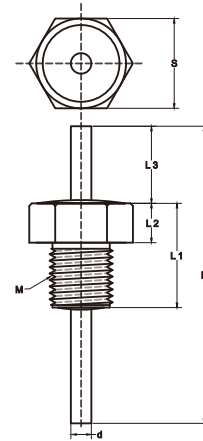
Special Feedthrough Filters



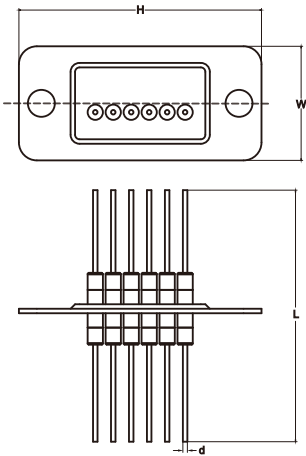
Tubular



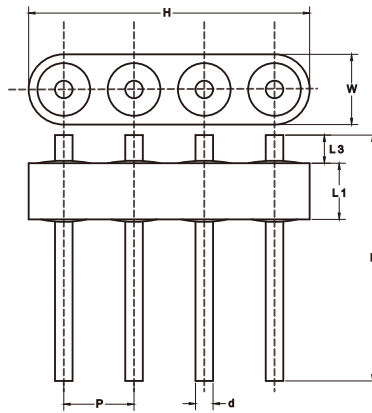
Solder-in



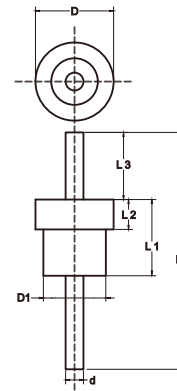
Threaded



Arrays

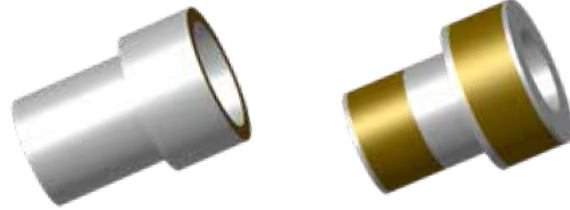
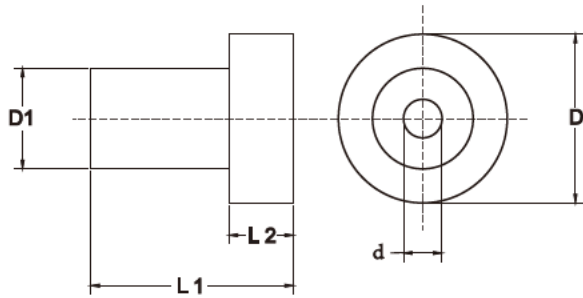


Miniature RF



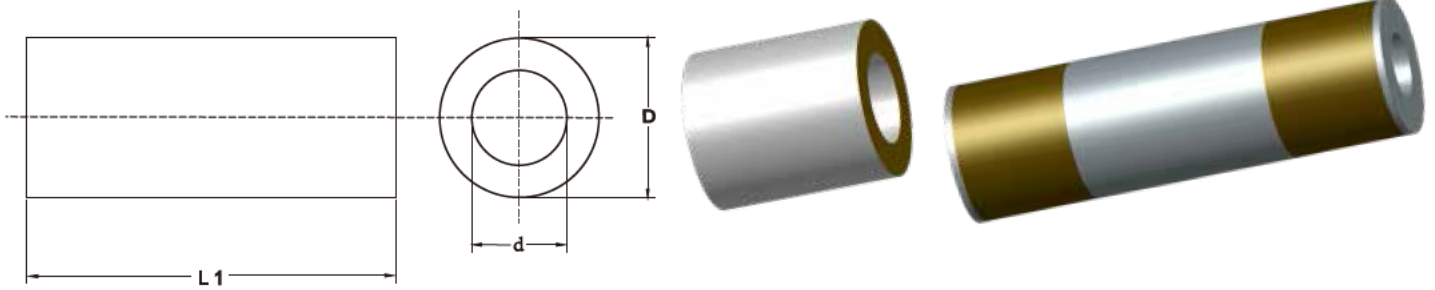
Hermetically Sealed

Tubular Ceramic Capacitors

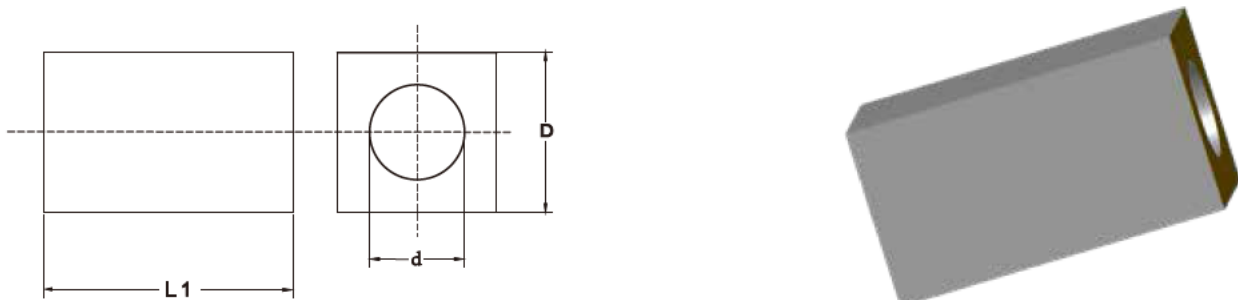


Part Num.	Size					Plate	Rated Vol.		Diel.	Cap.	Insertion Loss (dB)						
	D	D1	d	L1	L2		DC	AC			10 KHZ	100 KHZ	1 MHZ	10 MHZ	100 MHZ	1 GHZ	10 GHZ
G1915-909	1.9	1.5	0.8	<3	1	-	100	-	-	-	-	-	-	-	-	-	
G1915-921	1.9	1.5	0.8	2	0.9	Tin	100	-	NPO	<5pF	-	-	-	-	-	5	
G1915-914	1.9	1.5	0.7	2.5	1	Tin	100	-	NPO	10pF	-	-	-	-	5	12	
G1915-908	1.9	1.5	0.8	2.5	1	Gold	100	-	X7R	1000pF	-	-	-	5	20	35	40
G1915-916	1.9	1.5	0.8	2.5	1	Tin	100	-	X7R	1000pF	-	-	-	5	20	35	40
G2416-908	2.4	1.6	0.75	3	1.1	Tin	100	-	NPO	10pF	-	-	-	-	5	12	
G2416-901	2.4	1.6	0.8	4	1.5	Tin	100	-	X7R	1000pF	-	-	-	5	20	35	40
G2416-905	2.4	1.6	0.75	4	1.5	Tin	100	-	Y5V	3300pF	-	-	-	10	27	38	45
G2520-903	2.45	1.95	0.9	2.2	0.7	Tin	200	-	SL	47pF	-	-	-	-	10	20	
G2520-902	2.45	1.95	0.9	2.5	0.7	Tin	200	-	Y5P	470pF	-	-	-	-	9	28	33
G2520-904	2.5	1.9	1	2.4	0.7	Tin	50	-	X7R	1000pF	-	-	-	5	20	35	40
G2618-901	2.6	1.8	0.8	3.5	1	Tin	100	-	X7R	1000pF	-	-	-	5	20	35	40
G3822-907	3.8	2.2	0.75	6.5	2	Tin	100	-	Y5U	2000pF	-	-	-	6	23	35	40
G3822-913	3.8	2.2	0.75	4.5	1.5	Tin	100	-	Y5V	4700pF	-	-	-	13	30	40	50
G4224-901	4.2	2.4	1	3.5	1	Tin	100	-	X7R	1000pF	-	-	-	5	20	35	40
G4330-906	4.3	3	1.2	4	1.7	Tin	100	-	X7R	1000pF	-	-	-	5	20	35	40
G4532-908	4.5	3.2	1.3	6.2	2	Tin	160	-	NPO	22pF	-	-	-	-	8	15	
G4532-914	4.5	3	1.3	4	2	Tin	200	-	X7R	1000pF	-	-	-	5	20	35	40
G4532-911A	4.5	3	1.3	5.5	2	Tin	200	-	X7R	1500pF	-	-	-	5	22	35	40
G4722-907	4.7	2.2	0.8	3.2	1	Tin	100	-	SL	100pF	-	-	-	-	3	20	27
G4722-901B	4.7	2.2	1	3.7	1.5	Tin	100	-	X7R	1000pF	-	-	-	5	20	35	40
G4722-901A	4.7	2.2	1	3.7	1.5	Tin	100	-	X7R	2000pF	-	-	-	6	23	35	40
G4722-906	4.7	2.2	0.8	3.2	1	Tin	100	-	Y5V	4700pF	-	-	-	13	30	40	50
G4737-903	4.7	3.7	1.5	6.5	2.1	Tin	200	-	X7R	1000pF	-	-	-	5	20	35	40
G4737-907	4.7	3.7	1.5	6	2	Tin	200	-	Y5V	3300pF	-	-	-	10	27	38	45
G4737-904	4.7	3.7	1.5	6	2	Tin	200	-	Y5V	4700pF	-	-	-	13	30	40	50
G4737-908	4.7	3.7	1.5	6	2	Tin	200	-	Y5V	6000pF	-	-	-	15	30	42	50
G4743-901	4.8	4.3	1.3	6.5	0.8	Tin	100	-	X7R	1000pF	-	-	-	5	20	35	40
G5038-905	5.1	3.8	0.85	4.5	2.2	Tin	500	-	X7R	1000pF	-	-	-	5	20	35	40
G5122-904	5.1	2.2	1	6	2.5	Tin	100	-	X7R	3300pF	-	-	-	10	27	38	45
G5124-902	5.1	2.4	1.4	5.5	1.6	Tin	100	-	X7R	3300pF	-	-	-	10	27	38	45
G6045-903	6	4.5	2.5	6.5	1.5	Tin	160	-	Y5P	1000pF	-	-	-	5	20	35	40
G6045-904	6	4.5	2.5	6	1.5	Tin	160	-	X7R	1500pF	-	-	-	5	22	35	40
G6045-905	6	4.5	2.5	6.5	1.5	Tin	200	-	X7R	1800pF	-	-	-	6	23	35	40
G6045-906	6	4.5	2.5	6	1.7	Tin	160	-	NPO	68pF	-	-	-	-	12	23	
G7774-901	7.7	7.4	0.9	6.5	3	Tin	500	-	X7R	500pF	-	-	-	-	10	28	35

Tubular Ceramic Capacitors

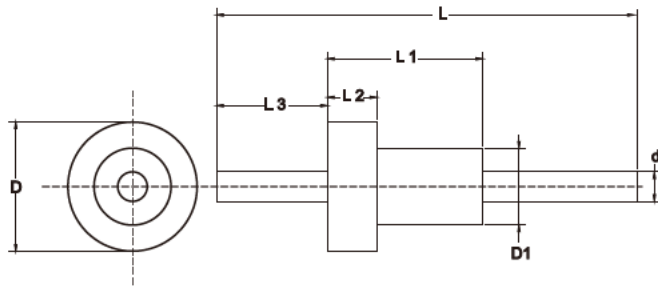


Part Num.	Size			Plate	Rated Vol.		Diel.	Cap.	E.C.	Insertion Loss (dB)						
	D	d	L1		DC	AC				10 KHZ	100 KHZ	1 MHZ	10 MHZ	100 MHZ	1 GHZ	10 GHZ
G1111-901	1.1	0.55	0.63	Tin	200	-	Y5P	100pF	C	-	-	-	-	3	20	27
G1818-901	1.85	0.65	1.25	Tin	100	-	Y5V	1000pF	C	-	-	-	5	20	35	40
G1818-902	1.8	1.2	2.5	Tin	100	-	X7R	1200pF	C	-	-	-	5	20	35	40
G2020-905	2	1.1	2.5	Tin	100	-	X7R	1000pF	C	-	-	-	5	20	35	40
G2020-906	2	1.1	3.2	Tin	100	-	X7R	1500pF	C	-	-	-	5	22	35	40
G2222-003	2.2	1.6	12	Tin	100	-	Y5P	430pF*2	PI	-	-	-	3	25	60	>70
G2222-014	2.2	1.6	8.5	Tin	250	-	X7R	800pF*2	PI	-	-	-	8	37	65	>70
G2222-013	2.2	1.6	8.5	Tin	100	-	Y5V	5000pF*2	PI	-	-	4	27	67	>70	>70
G2222-005	2.2	1.6	12	Tin	100	-	Y5U	0.01μF	C	-	-	4	21	35	50	58
G2222-006	2.2	1.6	12	Tin	100	-	Y5V	0.012μF*2	PI	-	-	10	40	>70	>70	>70
G2424-910	2.4	1.65	2.2	Tin	100	-	X7R	1000pF	C	-	-	-	5	20	35	40
G2424-912	2.4	1.65	2	Tin	100	-	X7R	1000pF	C	-	-	-	5	20	35	40
G2424-913	2.4	1.65	2.4	Tin	100	-	X7R	1200pF	C	-	-	-	5	20	35	40
G2424-911	2.4	1.65	2.6	Tin	100	-	Y5V	3300pF	C	-	-	-	10	27	38	45
G2424-914	2.4	1.65	2.6	Tin	100	-	Y5V	5500pF	C	-	-	-	13	30	40	50
G2525-913	2.5	1.3	1.3	Tin	100	-	SL	10pF	C	-	-	-	-	-	5	12
G2525-909	2.4	1.3	2.4	Tin	50	-	Y5P	500pF	C	-	-	-	-	10	28	35
G2525-906	2.5	1.3	2.5	Tin	200	-	X7R	1000pF	C	-	-	-	5	20	35	40
G3838-001A	3.8	1.8	12.5	Tin	500	-	X7R	1800pF	C	-	-	-	6	23	35	40
G8080-901	8	3.8	4	Tin	500	-	X7R	1000pF	C	-	-	-	5	20	35	40



Part Num.	Plate	Rated Vol.		Diel.	Cap.	Insertion Loss (dB)						
		DC	AC			10 KHZ	100 KHZ	1 MHZ	10 MHZ	100 MHZ	1 GHZ	10 GHZ
G1717-902B	Tin	100	-	Y5V	2200pF	-	-	-	8	24	35	43
G1717-902	Tin	100	-	Y5V	4000pF	-	-	-	10	30	39	45

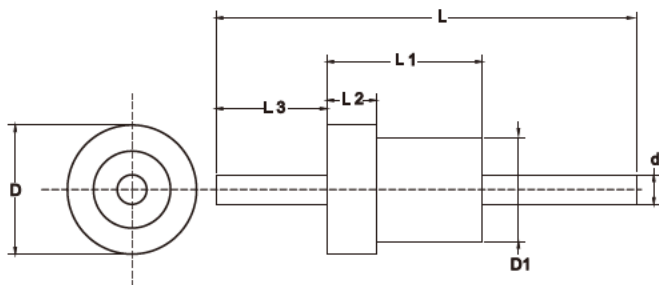
Solder-in Filters



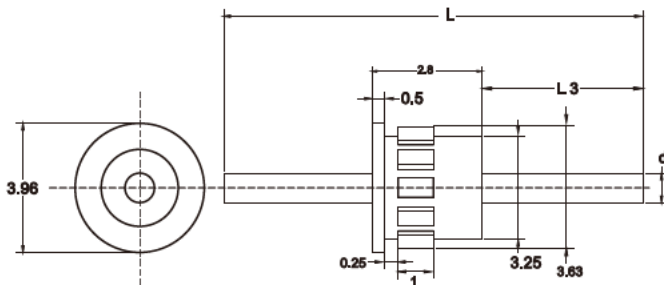
Part Num.	Size							Diel.	Plate	Rated Vol.		I	Cap.	Insertion Loss (dB)						
	D	D1	d	L	L1	L2	L3			DC	AC			10 KHZ	100 KHZ	1 MHz	10 MHz	100 MHz	1 GHz	10 GHz
H1915-916	1.9	1.5	0.8	30.3	2	0.5	10	NPO	Tin	100	-	7A	8pF	-	-	-	-	-	-	7
H1915-904	1.9	1.5	0.7	24	3.5	1	10	NPO	Tin	100	-	7A	10pF	-	-	-	-	-	5	12
JH1915-908	1.9	1.5	0.75	8.7	3	1	3	NPO	Gold	100	-	7A	10pF	-	-	-	-	-	5	12
H1915-906	1.9	1.5	0.7	17	3.5	1	9.5	NPO	Tin	100	-	7A	14pF	-	-	-	-	-	5	12
H1915-914	1.9	1.5	0.75	30.3	3.2	1	10	KL	Tin	100	-	7A	100pF	-	-	-	-	3	20	27
H1915-902	1.9	1.5	0.75	22	3.5	1	10	X7R	Tin	100	-	7A	1000pF	-	-	-	5	20	35	40
H1915-917	1.9	1.5	0.75	22	2.5	1	10.2	X7R	Gold	100	-	7A	1000pF	-	-	-	5	20	35	40
H1915-925	1.9	1.5	0.75	11.2	3.0	1	4	X7R	Tin	100	-	7A	1000pF*2	-	-	-	5	20	35	40
H1915-912	1.9	1.5	0.7	24	3.2	1	10	Y5U	Tin	100	-	7A	3300pF	-	-	-	10	27	38	45
H1915-924	1.9	1.5	0.75	11.2	3.0	1	3.5	Y5V	Tin	100	-	7A	3300pF	-	-	-	10	27	38	45
H2416-906	2.4	1.6	0.7	30.3	4	1.5	9	NPO	Tin	50	-	7A	15pF	-	-	-	-	-	5	13
H2416-901	2.4	1.6	0.75	30.3	4	1.5	9	X7R	Tin	50	-	7A	1000pF	-	-	-	5	20	35	40
H2416-905	2.4	1.6	0.7	30.3	4	1.5	9	Y5V	Tin	100	-	7A	3300pF	-	-	-	10	27	38	45
H2416-911	2.4	1.6	0.7	30.3	4	1.5	9	Y5V	Tin	100	-	7A	4700pF	-	-	-	13	30	40	50
H2520-904	2.5	1.9	0.8	30.3	2.3	0.6	10	SL	Tin	100	-	7A	47pF	-	-	-	-	-	10	20
H2520-901	2.5	1.9	1	24.3	3	0.7	10.5	KL	Gold	100	-	10A	100pF	-	-	-	-	3	20	27
H2520-903	2.5	1.9	0.8	22	2.8	0.6	9.5	X7R	Tin	100	-	7A	1000pF	-	-	-	5	20	35	40
H2618-931	2.6	1.8	0.75	14	3.5	1	6.5	NPO	Gold	100	-	7A	10pF	-	-	-	-	-	5	12
H2618-916A	2.6	1.8	0.7	30.3	3.5	1	9.5	SL	Tin	100	-	7A	50pF	-	-	-	-	-	10	20
H2618-917	2.6	1.8	0.75	22	3.5	1	9.5	SL	Tin	100	-	7A	100pF	-	-	-	-	3	20	27
H2618-907	2.6	1.8	0.75	22	3.5	1	9.5	X7R	Tin	100	-	7A	1000pF	-	-	-	5	20	35	40
H2618-929	2.6	1.8	0.75	14	3.5	1	6.5	X7R	Gold	100	-	7A	1000pF	-	-	-	5	20	35	40
H2618-907E	2.6	1.8	0.75	22	3.5	1	9.5	X7R	Tin	100	-	7A	1500pF	-	-	-	5	22	35	40
H2618-905	2.6	1.8	0.75	22	3.5	1	9.5	Y5V	Tin	100	-	7A	3300pF	-	-	-	10	27	38	45
H2618-905A	2.6	1.8	0.75	22	3.5	1	9.5	Y5V	Tin	100	-	7A	4700pF	-	-	-	13	30	40	50
H3822-922	3.8	2.2	0.75	28.3	4.6	1.4	13	KL	Tin	100	-	7A	150pF	-	-	-	-	4	20	28
H3822-911	3.8	2.2	0.75	57	6.5	1.2	23	X7R	Tin	100	-	7A	1000pF	-	-	-	5	20	35	40
H3822-912	3.8	2.2	0.75	19	5	1.5	9.5	X7R	Tin	100	-	7A	1000pF	-	-	-	5	20	35	40
H3822-923A	3.8	2.2	0.75	14	5	1.5	6	X7R	Tin	300	-	7A	1000pF	-	-	-	5	20	35	40
H3822-912B	3.8	2.2	0.75	19	5	1.5	9.5	X7R	Tin	100	-	7A	1500pF	-	-	-	5	22	35	40
H3822-907	3.8	2.2	0.75	57	6.5	2	23	Y5U	Tin	100	-	7A	2000pF	-	-	-	6	23	35	40
H3822-924A	3.8	2.2	0.75	28.3	6	1.5	12.5	Y5V	Tin	100	-	7A	4700pF	-	-	-	13	30	40	50
H3822-924	3.8	2.2	0.75	28.3	6	1.5	12.5	Y5V	Tin	100	-	7A	6800pF	-	-	-	15	30	42	50
H4224-909	4.1	2.4	1	32.0	3.6	1	21.4	X7R	Tin	100	-	10A	1000pF	-	-	-	5	20	35	40
H4224-905	4.2	2.4	1	28.3	3	1	13	Y5V	Tin	100	-	10A	3300pF	-	-	-	10	27	38	45
H4330-903	4.5	3	1	28.3	4	1.8	12.5	Y5P	Tin	100	-	10A	330pF	-	-	-	-	6	25	32
H4330-905	4.3	3	1.2	28.5	3.5	1.5	8.5	Y5U	Tin	100	-	12A	2200pF	-	-	-	8	24	35	43

Part Num.	Size							Diel.	Plate	Rated Vol.		I	Cap.	Insertion Loss (dB)						
	D	D1	d	L	L1	L2	L3			DC	AC			10 KHZ	100 KHZ	1 MHz	10 MHz	100 MHz	1 GHz	10 GHz
	H4532-915	4.5	3.2	1	57	4.5	2			26	X7R			Tin	100	-	15A	560pF	-	-
H4532-901	4.5	3.2	0.7	24	6	2.5	10	X7R	Tin	400	-	6A	1000pF	-	-	-	5	20	35	40
H4532-908	4.5	3.2	0.75	57	6	2.1	22	Y5U	Tin	400	-	7A	2200pF	-	-	-	8	24	35	43
H4722-902	4.7	2.2	0.75	22	3.2	1	12	X7R	Tin	100	-	7A	1000pF	-	-	-	5	20	35	40
H4722-903	4.7	2.2	0.75	22	2.8	1	12	Y5V	Tin	100	-	7A	3300pF	-	-	-	10	27	38	45
H4722-906A	4.7	2.2	0.7	22	3.3	1	12	Y5V	Tin	100	-	7A	4700pF	-	-	-	13	30	40	50
H4722-916	4.7	2.2	1	28.3	4	1.5	12.5	Y5V	Tin	100	-	10A	10000pF	-	-	4	21	35	50	58
H4737-901	4.7	3.7	1.5	35	6.5	2.1	12	X7R	Tin	100	-	20A	1000pF	-	-	-	5	20	35	40
H4737-902	4.7	3.7	1.5	35	6	2	13.5	Y5V	Tin	100	-	20A	4700pF	-	-	-	13	30	40	50
H4743-901	4.7	4.3	1.2	35	6.5	0.5	14	X7R	Tin	100	-	10A	1000pF	-	-	-	5	20	35	40
H5038-901	5	3.8	0.75	30.3	4.5	2	9	X7R	Tin	100	-	7A	1000pF	-	-	-	5	20	35	40
H6045-901	6	4.2	2.5	35	6.5	1.5	12	Y5P	Tin	100	-	35A	1000pF	-	-	-	5	20	35	40

Solder-in Filters with Metallic Shell



Part Num.	Size							Diel.	Plate	Rated Vol.		I	Cap.	Insertion Loss (dB)						
	D	D1	d	L	L1	L2	L3			DC	AC			10 KHZ	100 KHZ	1 MHz	10 MHz	100 MHz	1 GHz	10 GHz
	H3630-010	3.6	3	0.8	19.0	3.5	0.25			8.5	X7R			Silver	100	-	7A	1000pF	-	-
H3630-001	3.6	3	0.8	11	3	0.5	6.5	Y5V	Gold	50	-	5A	4000pF	-	-	-	10	30	39	45
H3630-012	3.55	2.95	0.8	11.5	3	0.5	7	Y5V	Gold	50	-	5A	5000pF	-	-	-	13	30	40	50
H4033-016	4	3.3	0.8	22	2.8	0.5	11	SL	Gold	100	-	7A	80pF	-	-	-	-	-	15	25
H4033-002	4	3.3	0.8	22	3	0.5	9	X7R	Gold	50	-	7A	1000pF	-	-	-	5	20	35	40
H4033-024	4	3.3	0.8	11.5	2.8	0.5	6.7	X7R	Gold	20	-	7A	1000pF	-	-	-	5	20	35	40
H4033-012	4	3.3	0.8	22	3	0.5	9	X7R	Gold	100	-	7A	0.1μF	-	5	22	40	47	65	≥65
H7040-001	7	4	1.2	13	4.5	2.5	4.5	X7R	Silver	200	-	10A	1000pF	-	-	-	5	20	35	40

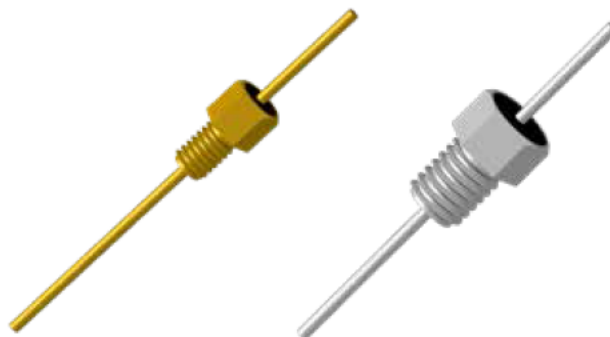
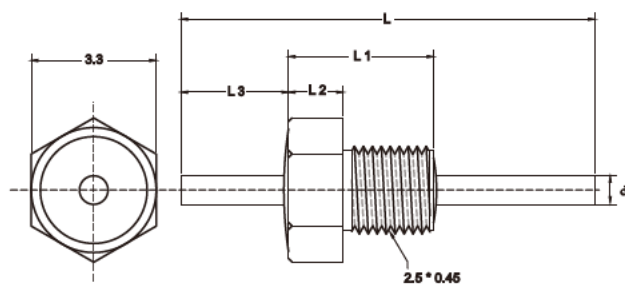


Part Num.	Size			Diel.	Plate	Rated Vol.		I	Cap.	Insertion Loss (dB)						
	d	L	L3			DC	AC			10 KHZ	100 KHZ	1 MHz	10 MHz	100 MHz	1 GHz	10 GHz
	Q4033-006A	0.6	22			9	SL			Gold	100	-	5A	80pF	-	-
Q4033-006	0.6	22	9	SL	Gold	100	-	5A	100pF	-	-	-	-	3	20	27
Q4033-005	0.8	15.88	6.5	X7R	Gold	50	-	5A	0.03μF	-	-	10	30	43	55	60

Resin Sealed Bolt-in Filters (Metric)



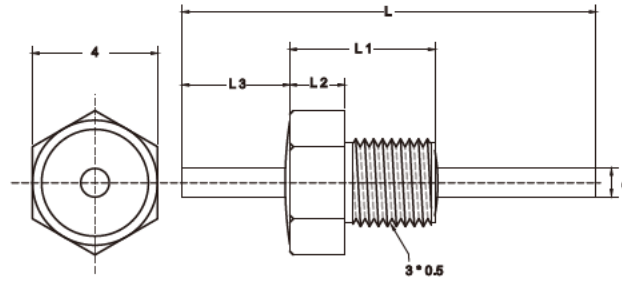
S3.3 M2.5 Series :



Part Num.	Size					Diel.	Plate	Rated Vol.		I	Cap.	E.C.	Insertion Loss (dB)							
	d	L	L1	L2	L3			DC	AC				10 KHZ	100 KHZ	1 MHZ	10 MHZ	100 MHZ	1 GHZ	10 GHZ	
L3325-036N	0.75	22	6.6	3	8.5	NPO	Nickel	100	-	7A	4.7pF	C	-	-	-	-	-	-	5	
L3325-008	0.75	30.3	6.6	3	8.3	NPO	Silver	100	-	7A	5.1pF	C	-	-	-	-	-	-	5	
L3325-008N	0.75	30.3	6.6	3	8.3	NPO	Nickel	100	-	7A	5.1pF	C	-	-	-	-	-	-	5	
L3325-012	0.75	30.3	6.6	3.6	7.7	NPO	Nickel	100	-	7A	5.1pF	C	-	-	-	-	-	-	5	
L3325-037	0.75	30.3	6.6	3	8.3	NPO	Gold	100	-	7A	5.1pF	C	-	-	-	-	-	-	5	
L3325-004N	0.75	30.3	6.6	3	8.3	NPO	Nickel	10	-	7A	10pF	C	-	-	-	-	-	5	12	
L3325-025N	0.7	30.3	6.6	3	21.5	NPO	Nickel	100	-	7A	10pF	C	-	-	-	-	-	5	12	
L3325-044N	0.75	30.3	6.6	3	8.3	NPO	Nickel	50	-	7A	25pF	C	-	-	-	-	-	8	15	
L3325-044N	0.75	30.3	6.6	3	8.3	NPO	Nickel	50	-	7A	25pF	C	-	-	-	-	-	8	15	
L3325-002N	0.7	30.3	6.6	3	8.3	SL	Nickel	50	-	7A	100pF	C	-	-	-	-	3	20	27	
L3325-031	0.7	30.3	6.6	3	8.3	SL	Gold	50	-	7A	100pF	C	-	-	-	-	3	20	27	
L3325-043	0.75	30.3	6.0	3	8.3	SL	Gold	100	-	7A	100pF	C	-	-	-	-	3	20	27	
L3325-006	0.7	30.3	6.6	3	8.3	Y5P	Silver	100	-	7A	470pF	C	-	-	-	-	9	28	33	
L3325-001	0.75	30.3	6.6	3	8.3	X7R	Silver	50	-	7A	1000pF	C	-	-	-	5	20	35	40	
L3325-019	0.75	30.3	6.6	3	7.5	X7R	Silver	100	-	7A	1000pF	C	-	-	-	5	20	35	40	
L3325-020N	0.75	30.3	6.6	3	8.3	X7R	Nickel	100	-	7A	1000pF	C	-	-	-	5	20	35	40	
L3325-034	0.7	30.3	6.6	3	8.3	X7R	Gold	100	-	7A	1000pF	C	-	-	-	5	20	35	40	
L3325-021N	0.75	30.3	6.6	3	8	Y5U	Silver	100	-	7A	2200pF	C	-	-	-	8	24	35	43	
L3325-003	0.7	30.3	6.6	3	8.3	Y5V	Silver	50	-	7A	3300pF	C	-	-	-	10	27	38	45	
L3325-013	0.75	30.3	6.6	3.6	7.7	X7R	Nickel	100	-	7A	3300pF	C	-	-	-	10	27	38	45	
L3325-014	0.75	30.3	6.6	3	8.3	X7R	Silver	50	-	7A	3300pF	C	-	-	-	10	27	38	45	
L3325-024N	0.7	30.3	6.6	3	8	Y5V	Nickel	50	-	7A	3300pF	C	-	-	-	10	27	38	45	
L3325-005	0.7	30.3	6.6	3	8.3	Y5V	Silver	50	-	7A	4700pF	C	-	-	-	13	30	40	50	
L3325-023AN	0.75	30.3	6.6	3	8	Y5V	Nickel	100	-	7A	4700pF	C	-	-	-	13	30	40	50	
L3325-015	0.75	30.3	6.6	3	8.3	X7R	Silver	50	-	7A	0.01µF	C	-	-	4	21	35	50	58	
L3325-023N	0.75	30.3	6.6	3	8	Y5V	Silver	100	-	7A	0.01µF	C	-	-	4	21	35	50	58	
L3325-017	0.75	30.3	6.6	3	8.3	X7R	Silver	25	-	7A	0.03µF	C	-	-	10	30	43	55	60	
L3325-016A	0.75	30.3	6.6	3	8.3	X7R	Silver	25	-	7A	0.1µF	C	-	5	22	40	47	65	≥65	

Resin Sealed Bolt-in Filters (Metric)

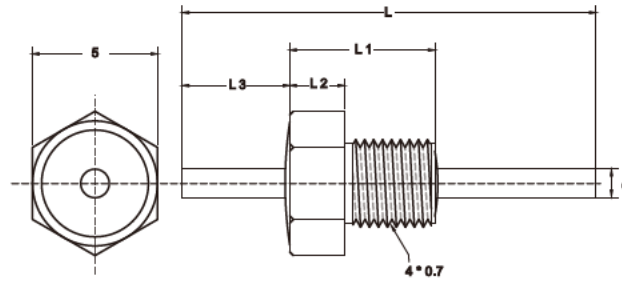
S4 M3 Series:



Part Num.	Size					Diel.	Plate	Rated Vol.		I	Cap.	E.C.	Insertion Loss (dB)							
	d	L	L1	L2	L3			DC	AC				10 KHZ	100 KHZ	1 MHZ	10 MHZ	100 MHZ	1 GHZ	10 GHZ	
L4030-037N	0.75	30.3	6	2.5	8.8	NPO	Nickel	100	-	7A	5pF	C	-	-	-	-	-	-	5	
L4030-001	0.75	30.3	7	3	8.3	NPO	Silver	50	-	7A	10pF	C	-	-	-	-	-	5	12	
L4030-001N	0.75	30.3	7	3	8.8	NPO	Nickel	100	-	7A	10pF	C	-	-	-	-	-	5	12	
L4030-030N	0.75	30.3	6	2.5	8.8	NPO	Nickel	100	-	7A	10pF	C	-	-	-	-	-	5	12	
L4030-073	0.75	30.3	7	3	8	NPO	Silver	100	-	7A	22pF	C	-	-	-	-	-	8	15	
L4030-023	0.7	17	7	3	5	SL	Silver	100	-	7A	50pF	C	-	-	-	-	-	10	20	
L4030-059N	0.75	30.3	6	2.5	8.8	NPO	Nickel	100	-	7A	50pF	C	-	-	-	-	-	10	20	
L4030-006A	0.7	17	7	3	5	SL	Silver	100	-	7A	80pF	C	-	-	-	-	-	15	25	
L4030-002	0.75	30.3	7	3	8.3	Y5P	Silver	100	-	7A	200pF	C	-	-	-	-	4	22	30	
L4030-003N	0.75	30.3	6	3	8.8	Y5P	Nickel	100	-	7A	470pF	C	-	-	-	-	9	28	33	
L4330-052	0.75	30.3	7	3	8.3	Y5P	Silver	100	-	7A	680pF	C	-	-	-	-	13	30	37	
L4030-004	0.75	30.3	7	3	8.3	X7R	Silver	50	-	7A	1000pF	C	-	-	-	5	20	35	40	
L4030-034N	0.75	30.3	6	2.5	8.8	X7R	Nickel	100	-	7A	1000pF	C	-	-	-	5	20	35	40	
L4030-075N	0.75	26	6	2.5	6	X7R	Nickel	100	-	7A	1000pF	C	-	-	-	5	20	35	40	
L4030-004E	0.75	30.3	7	3	8.3	X7R	Silver	100	-	7A	1500pF	C	-	-	-	5	22	35	40	
L4030-033N	0.75	30.3	6	2.5	8.8	Y5U	Nickel	100	-	7A	2200pF	C	-	-	-	8	24	35	43	
L4030-032AN	0.75	30.3	6	2.5	8.8	Y5V	Nickel	100	-	7A	2700pF	C	-	-	-	10	25	38	45	
L4030-005	0.7	30.3	7	3	8.3	Y5V	Silver	50	-	7A	3300pF	C	-	-	-	10	27	38	45	
L4030-032N	0.75	30.3	6	2.5	8.8	Y5V	Nickel	100	-	7A	3300pF	C	-	-	-	10	27	38	45	
L4030-010	0.75	30.3	7	3	8.3	X7R	Silver	100	-	7A	4700pF	C	-	-	-	13	30	40	50	
L4030-032BN	0.75	30.3	6	2.5	8.8	Y5V	Nickel	100	-	7A	4700pF	C	-	-	-	13	30	40	50	
L4030-069	0.75	30.3	7	3	8	Y5V	Silver	100	-	7A	6800pF	C	-	-	-	15	30	42	50	
L4030-008	0.75	30.3	7	3	8.3	X7R	Silver	50	-	7A	0.01μF	C	-	-	4	21	35	50	58	
L4030-008N	0.75	30.3	6	2.5	8.8	X7R	Nickel	50	-	7A	0.01μF	C	-	-	4	21	35	50	58	
L4330-053N	0.75	28.3	6	2.5	11.5	Y5V	Nickel	100	-	7A	0.01μF	C	-	-	4	21	35	50	58	
L4030-081	0.75	30.3	7	3	8.3	X7R	Silver	50	-	7A	0.027μF	C	-	-	10	30	41	55	60	
L4030-080A	0.75	30.3	7	3	8.3	X7R	Silver	50	-	7A	0.047μF	C	-	-	12	32	43	57	60	
L4030-082	0.75	19.0	7	3	8.0	X7R	Silver	60	-	10A	0.05μF	C	-	-	15	34	45	58	60	
L4030-011	0.75	30.3	7	3	8.3	X7R	Silver	16	-	7A	0.1μF	C	-	5	22	40	47	65	≥65	
L4030-083N	0.75	14.0	7	3	4.0	X7R	Silver	16	-	7A	0.1μF	C	-	5	22	40	47	65	≥65	

Resin Sealed Bolt-in Filters (Metric)

S5 M4 Series:

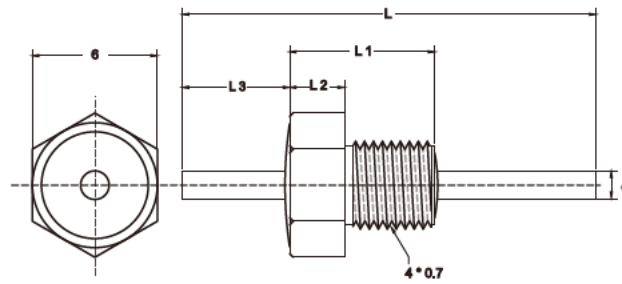


Part Num.	Size					Diel.	Plate	Rated Vol.		I	Cap.	E.C.	Insertion Loss (dB)						
	d	L	L1	L2	L3			DC	AC				10 KHZ	100 KHZ	1 MHZ	10 MHZ	100 MHZ	1 GHZ	10 GHZ
L5040-004	0.75	35	6.5	3	12	SL	Silver	100	-	7A	50pF	C	-	-	-	-	-	10	20
L5040-023	0.75	38	6.5	3	15	SL	Silver	100	-	7A	50pF	C	-	-	-	-	-	10	20
L5040-007	1	28.3	8.2	3.2	11.5	SL	Silver	100	-	10A	100pF	C	-	-	-	-	3	20	27
L5040-033	0.75	57	6.5	3	21	SL	Silver	100	-	7A	100pF	C	-	-	-	-	3	20	27
L5040-019	0.75	57	6.5	3	21	SL	Silver	100	-	7A	200pF	C	-	-	-	-	4	22	30
L5040-006	1	28.3	8.2	3.2	11.5	Y5P	Silver	100	-	10A	470pF	C	-	-	-	-	9	28	33
L5040-002	1	28.3	8	4	10.3	X7R	Silver	100	-	10A	1000pF	C	-	-	-	5	20	35	40
L5040-001	0.75	28.3	8.2	3.2	9.3	X7R	Silver	100	-	7A	1000PF*2	PI	-	-	-	10	44	68	>70
L5040-009	0.75	35	13.5	3.5	9.5	X7R	Silver	100	-	7A	3300pF*2	PI	-	-	-	21	64	>70	>70
L5040-005	0.75	28.3	8.2	3.2	11	Y5V	Silver	200	-	7A	4700pF	C	-	-	-	13	30	40	50
L5040-021	0.75	28.3	12	5	7	Y5U	Silver	100	-	7A	5000pF*2	PI	-	-	4	27	67	>70	>70
L5040-020	0.75	28.3	12	5	7	Y5V	Silver	50	-	5A	8000pF*2	PI	-	-	7	32	>70	>70	>70
L5040-003	0.75	35	6.5	3	12	X7R	Silver	50	-	7A	0.01μF	C	-	-	4	21	35	50	58
L5040-024	0.75	30.3	13.5	3.5	8.5	X7R	Silver	50	-	7A	0.03μF	LC	-	-	12	30	48	68	>70

Resin Sealed Bolt-in Filters (Metric)



S6 M4 Series:

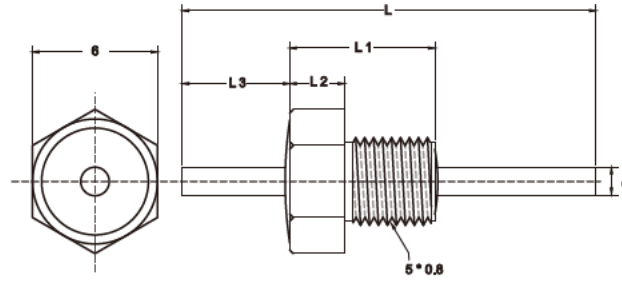


Part Num.	Size					Diel.	Plate	Rated Vol.		I	Cap.	E.C.	Insertion Loss (dB)						
	d	L	L1	L2	L3			DC	AC				10 KHZ	100 KHZ	1 MHZ	10 MHZ	100 MHZ	1 GHZ	10 GHZ
L6040-057	1	28.3	7.5	3.5	11.5	NPO	Silver	100	-	10A	5.1pF	C	-	-	-	-	-	-	5
L6040-032A	1	28.3	7.5	3.5	11.5	NPO	Silver	100	-	10A	6.8pF	C	-	-	-	-	-	-	6
L6040-054AN	1	28.3	7.5	3.5	11.5	NPO	Nickel	100	-	10A	10pF	C	-	-	-	-	-	5	12
L6040-054	1	28.3	7.5	3.5	11.5	NPO	Silver	200	-	10A	15pF	C	-	-	-	-	-	5	13
L6040-084N	1	28.3	7.5	3.5	11.5	NPO	Nickel	100	-	10A	22pF	C	-	-	-	-	-	8	15
L6040-006AN	1	28.3	7.5	3.5	11.5	SL	Nickel	100	-	10A	100pF	C	-	-	-	-	3	20	27
L6040-006	1	28.3	7.5	3.5	11.5	SL	Silver	100	-	10A	150pF	C	-	-	-	-	4	20	28
L6040-056	1	28.3	7.5	3.5	11.5	NPO	Silver	100	-	10A	220pF	C	-	-	-	-	4	22	30
L6040-055	1	28.3	7.5	3.5	11.5	Y5P	Silver	200	-	10A	250pF	C	-	-	-	-	4	22	30
L6040-007	1	28.3	7.5	3.5	11.5	NPO	Silver	100	-	10A	330pF	C	-	-	-	-	6	25	32
L6040-095	1	28.3	7.5	3.5	11.5	Y5P	Silver	100	-	10A	330pF	C	-	-	-	-	6	25	32
L6040-002N	1	28.3	7.5	3.5	11.5	Y5P	Nickel	200	-	10A	470pF	C	-	-	-	-	9	28	33
L6040-002A	1	28.3	7.5	3.5	11.5	Y5P	Silver	100	-	10A	560pF	C	-	-	-	-	10	28	35
L6040-001	1	28.3	7.5	3.5	11.5	X7R	Silver	100	-	10A	1000pF	C	-	-	-	5	20	35	40
L6040-058AN	1	28.3	7.5	3.5	11.5	X7R	Nickel	500	-	10A	1000pF	C	-	-	-	5	20	35	40
L6040-058N	1	28.3	7.5	3.5	11.5	X7R	Nickel	100	-	10A	1000pF	C	-	-	-	5	20	35	40
L6040-086N	1.3	28.3	7.5	3.5	10.5	X7R	Nickel	100	-	15A	1000pF	C	-	-	-	5	20	35	40
L6040-091N	1	28.3	7.5	3.5	11.5	X7R	Nickel	100	-	15A	1500pF	C	-	-	-	5	22	35	40
L6040-042	0.75	28.3	7.5	3.5	12	X7R	Silver	100	-	7A	1800pF	C	-	-	-	6	23	35	40
L6040-059N	1	28.3	7.5	3.5	11.5	X7R	Nickel	100	-	10A	2200pF	C	-	-	-	8	24	35	43
L6040-011	1	28.3	7.5	3.5	11.5	X7R	Silver	100	-	10A	3300pF	C	-	-	-	10	27	38	45
L6040-060AN	1	28.3	7.5	3.5	11.5	X7R	Nickel	500	-	10A	3300pF	C	-	-	-	10	27	38	45
L6040-060N	1	28.3	7.5	3.5	11.5	X7R	Nickel	100	-	10A	3300pF	C	-	-	-	10	27	38	45
L6040-066	1.2	28.5	7.5	3.5	6.5	X7R	Silver	100	-	15A	3300pF	C	-	-	-	10	27	38	45
L6040-085N	1	28.3	7.5	3.5	11.5	Y5V	Nickel	100	-	10A	4700pF	C	-	-	-	13	30	40	50
L6040-008	1	28.3	7.5	3.5	11.5	X7R	Silver	100	-	10A	0.01μF	C	-	-	4	21	35	50	58
L6040-008N	1	28.3	7.5	3.5	11.5	X7R	Silver	100	-	10A	0.01μF	C	-	-	4	21	35	50	58
L6040-015	1	28.3	11	4	10.5	X7R	Silver	300	-	10A	0.01μF	C	-	-	4	21	35	50	58
L6040-080N	1	35	7.5	3.5	12	Y5V	Silver	300	-	10A	0.01μF	C	-	-	4	21	35	50	58
L6040-029	1	28.3	7.5	3.5	11.5	X7R	Silver	100	-	10A	0.03μF	C	-	-	10	30	43	55	60
L6040-071	0.8	28.3	7.5	3.5	11.5	X7R	Silver	200	-	10A	0.047μF	C	-	-	12	32	43	57	60
L6040-010	1	28.3	7.5	3.5	11.5	X7R	Silver	100	-	10A	0.1μF	C	-	5	22	40	47	65	≥65
L6040-016	1	28.3	11	4	10.5	X7R	Silver	100	-	10A	0.1μF	C	-	5	22	40	47	65	≥65
L6040-096N	1	28.3	7.5	3.5	11.5	X7R	Silver	100	-	10A	0.47μF	C	-	17	34	50	62	65	≥70
L6040-061N	1	28.3	7.5	3.5	11.5	X7R	Silver	100	-	10A	1.0μF	C	5	20	38	52	65	70	≥80
L6040-097N	1	28.3	7.5	3.5	11.5	X7R	Silver	100	-	10A	2.0μF	C	17	30	50	63	70	75	≥80

Resin Sealed Bolt-in Filters (Metric)

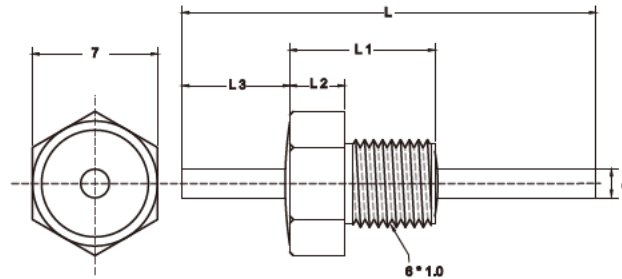


S6 M5 Series:



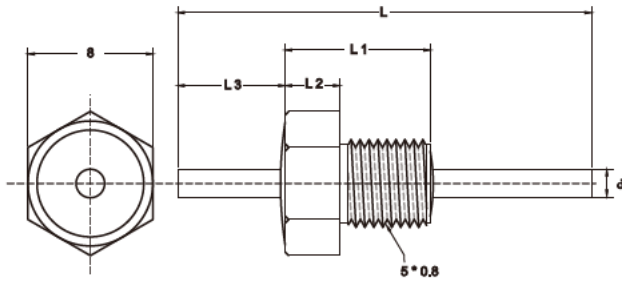
Part Num.	Size					Diel.	Plate	Rated Vol.		I	Cap.	E.C.	Insertion Loss (dB)								
	d	L	L1	L2	L3			DC	AC				10 KHZ	100 KHZ	1 MHZ	10 MHZ	100 MHZ	1 GHZ	10 GHZ		
L6050-024N	0.75	30.3	10	4	7.5	-	Nickel	-	600	7A	-	-	-	-	-	-	-	-	-		
L6050-048N	1	35	15.5	4.5	10.5	SL	Nickel	1250	-	10A	10	C	-	-	-	-	-	5	12		
L6050-064N	1	35	10	4	10.5	SL	Nickel	300	-	10A	47pF	C	-	-	-	-	-	10	20		
L6050-053	0.8	57	16	5	19.5	SL	Silver	1250	-	7A	56pF	C	-	-	-	-	-	10	20		
L6050-030N	1	28.3	10	4	10.5	SL	Nickel	750	-	10A	80pF	C	-	-	-	-	-	15	25		
L6050-015N	1	28.3	10	4	10.5	SL	Silver	500	-	10A	100pF	C	-	-	-	-	3	20	27		
L6050-019	1.3	28.5	10	4	10.5	KL	Silver	1500	-	10A	100pF	C	-	-	-	-	3	20	27		
L6050-020	1.3	28.5	10	4	10.5	KL	Silver	1500	-	10A	200pF	C	-	-	-	-	4	22	30		
L6050-014N	1.2	28.5	15.5	4.5	7	X7R	Nickel	1000	-	15A	1000pF	C	-	-	-	5	20	35	40		
L6050-016N	0.75	35	10	4	10.5	X7R	Nickel	600	-	7A	1000pF	C	-	-	-	5	20	35	40		
L6050-008	0.75	28.3	7	3	10.5	X7R	Silver	300	-	7A	1000pF*2	PI	-	-	-	3	35	60	70		
L6050-021AN	1	35	10	4	10.5	X7R	Nickel	1250	-	10A	1500pF	C	-	-	-	5	22	35	40		
L6050-021N	1	35	10	4	10.5	X7R	Nickel	750	-	10A	1500pF	C	-	-	-	5	22	35	40		
L6050-046	0.8	54	16	5	15	X7R	Silver	1000	-	7A	1500pF	C	-	-	-	5	22	35	40		
L6050-018N	1.2	28.5	15.5	4.5	7	X7R	Nickel	1000	-	15A	2000pF	C	-	-	-	6	23	35	40		
L6050-005N	1	35	10	4	10.5	X7R	Nickel	300	-	10A	3300pF	C	-	-	-	10	27	38	45		
L6050-033N	1	35	10	4	10.5	X7R	Silver	300	-	10A	4700pF	C	-	-	-	13	30	40	50		
L6050-058N	0.75	23	10	4	5	X7R	Silver	600	-	10A	4700pF	C	-	-	-	13	30	40	50		
L6050-023N	1	35	10	4	10.5	X7R	Nickel	750	-	10A	10000pF	C	-	-	-	4	21	35	50	58	
L6050-043N	1	35	10	4	10.5	X7R	Nickel	750	-	10A	0.022μF	C	-	-	-	7	20	37	50	60	
L6050-025	1	28.3	10	4	10.5	X7R	Silver	300	-	10A	68000pF	C	-	-	-	4	17	36	45	60	≥62
L6050-049N	1.2	28.5	10	4	6.5	X7R	Nickel	500	-	15A	0.1μF	C	-	-	-	5	22	40	47	65	≥65
L6050-036N	1	28.3	10	4	10.5	X7R	Nickel	300	-	10A	1.0μF	C	5	20	38	52	65	70	75	≥80	
L6050-051N	1	28.3	10	4	10.5	X7R	Nickel	75	-	10A	3.3μF	C	20	34	52	63	70	75	75	≥80	

S7 M6 Series:

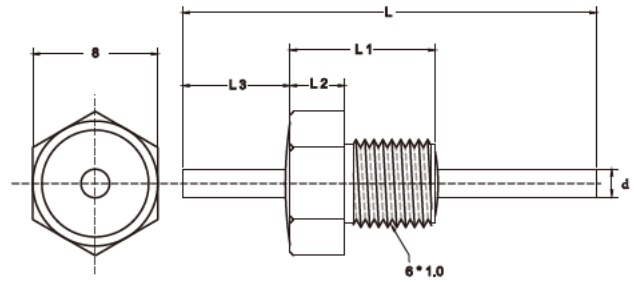


Part Num.	Size					Diel.	Plate	Rated Vol.		I	Cap.	E.C.	Insertion Loss (dB)							
	d	L	L1	L2	L3			DC	AC				10 KHZ	100 KHZ	1 MHZ	10 MHZ	100 MHZ	1 GHZ	10 GHZ	
L7060-002	2.0	42	16	8	15.5	SL	Silver	300	-	25A	100pF	C	-	-	-	-	3	20	27	
L7060-001	2.0	42	16	8	15.5	SL	Silver	300	-	25A	220pF	C	-	-	-	-	4	22	30	
L7060-015	1.5	35	16	8	9	X7R	Silver	200	-	15A	1500pF	C	-	-	-	-	5	22	35	40

Resin Sealed Bolt-in Filters (Metric)



S8M5 Series



S8M6 Series

S8 M5 Series:

Part Num.	Size					Diel.	Plate	Rated Vol.		I	Cap.	E.C.	Insertion Loss (dB)						
	d	L	L1	L2	L3			DC	AC				10 KHZ	100 KHZ	1 MHZ	10 MHZ	100 MHZ	1 GHZ	10 GHZ
L8050-020N	1	35	11.5	6.5	9.5	NPO	Nickel	200	-	10A	5pF	C	-	-	-	-	-	-	5
L8050-001	1.5	32	10	6	8	X7R	Silver	200	-	20A	1000pF	C	-	-	-	5	20	35	40
L8050-002C	1.5	35	11	6	10	X7R	Silver	100	-	20A	1500pF	C	-	-	-	5	22	35	40
L8050-008	1.5	35	10	6	10	X7R	Silver	200	-	20A	3300pF	C	-	-	-	10	27	38	45
L8050-013	1.5	35	10	6	10	X7R	Silver	200	-	20A	5600pF	C	-	-	-	13	30	40	50
L8050-012	1	35	11	6	9	X7R	Silver	100	-	10A	0.01μF	C	-	-	4	21	35	50	58
L8050-009	1	35	11	6	9	X7R	Silver	100	-	10A	0.1μF	C	-	5	22	40	47	65	≥65

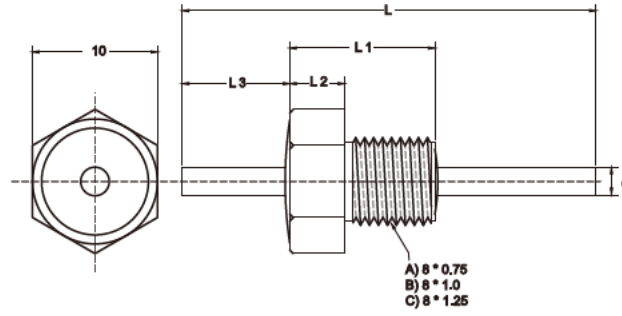
S8 M6 Series:

Part Num.	Size					Diel.	Plate	Rated Vol.		I	Cap.	E.C.	Insertion Loss (dB)						
	d	L	L1	L2	L3			DC	AC				10 KHZ	100 KHZ	1 MHZ	10 MHZ	100 MHZ	1 GHZ	10 GHZ
L8060-095N	1	24.3	9	4	8.5	X7R	Nickel	100	-	10A	5pF	C	-	-	-	-	-	-	5
L8060-020N	1.5	35	11	6	10.5	SL	Nickel	-	250	20A	100pF	C	-	-	-	-	3	20	27
L8060-015N	0.8	30.3	9	4	7	X7R	Nickel	100	-	7A	1000pF	C	-	-	-	5	20	35	40
L8060-015BN	0.8	30.3	9	4	7	X7R	Nickel	500	-	7A	1000pF	C	-	-	-	5	20	35	40
L8060-063BN	1.5	35	11	6	10	X7R	Nickel	500	-	20A	1500pF	C	-	-	-	5	22	35	40
L8060-018CN	1.5	35	11	6	10.5	X7R	Nickel	-	250	20A	2200pF	C	-	-	-	8	24	35	43
L8060-013N	1.5	35	11	6	10.5	Y5V	Nickel	-	250	20A	3300pF	C	-	-	-	10	27	38	45
L8060-003N	0.8	30.3	9	4	7	X7R	Nickel	200	-	7A	4700pF	C	-	-	-	13	30	40	50
L8060-013EN	1.5	35	11	6	10.5	Y5V	Nickel	-	250	20A	4700pF	C	-	-	-	13	30	40	50
L8060-013AN	1.5	35	11	6	10.5	Y5V	Nickel	-	250	20A	5000pF	C	-	-	-	13	30	40	50
L8060-083N	1.2	35	9	4	12	X7R	Nickel	100	-	15A	6800pF	C	-	-	-	15	30	42	50
L8060-044N	1.5	35	11	6	10.5	X7R	Nickel	500	-	20A	10000pF	C	-	-	4	21	35	50	58
L8060-061N	1.5	35	11	6	10.5	X7R	Silver	500	-	20A	0.022μF	C	-	-	7	20	37	50	60
L8060-019AN	1	28.3	9	4	10.5	X7R	Nickel	100	-	10A	0.1μF	C	-	5	22	40	47	65	≥65
L8060-025N	1	28.3	9	4	10.5	X7R	Nickel	250	-	10A	0.15μF	C	-	4	26	42	55	65	≥70
L8060-023N	1	28.3	9	4	10.5	X7R	Nickel	100	-	10A	0.33μF	C	-	12	30	47	62	65	≥70
L8060-070N	1	28.3	9	4	10.5	X7R	Nickel	200	-	10A	0.47μF	C	-	17	34	50	62	65	≥70
L8060-028	1	35	15	10	13.5	X7R	Silver	50	-	10A	0.47μF*2	PI	4	18	60	>70	>70	>70	>70
L8060-009N	1	28.3	9	4	10.5	X7R	Silver	100	-	10A	1.0μF	C	5	20	38	52	65	70	≥80
L8060-029	1	35	15	10	13.5	X7R	Silver	50	-	10A	1.0μF*2	PI	10	27	63	>70	>70	>70	>70
L8060-007N	1	28.3	9	4	10.5	X7R	Nickel	100	-	10A	1.5μF	C	10	26	42	57	70	75	≥80
L8060-017N	1	28.3	9	4	10.5	X7R	Nickel	50	-	10A	2.0μF	C	17	30	50	63	70	75	≥80
L8060-085N	1.2	35	9	4	12	X7R	Nickel	50	-	15A	4.7μF	C	25	37	56	65	70	75	≥80

Resin Sealed Bolt-in Filters (Metric)

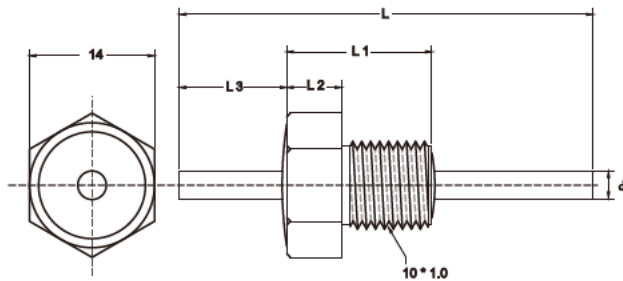


S10 M8 Series :



Part Num.	Size						Diel.	Plate	Rated Vol.		I	Cap.	E.C.	Insertion Loss (dB)						
	d	L	L1	L2	L3	M			DC	AC				10 KHZ	100 KHZ	1 MHZ	10 MHZ	100 MHZ	1 GHZ	10 GHZ
L10080-045N	1.5	35	15	7	10	A	-	Nickel	500	-	20A	-	-	-	-	-	-	-	-	-
L10080-019N	1.5	35	15	7	10	B	-	Nickel	200	-	15A	-	-	-	-	-	-	-	-	-
L10080-030N	1.5	35	15	7	10	A	SL	Nickel	-	250	20A	100pF	C	-	-	-	-	3	20	27
L10080-001AN	1.5	35	15	7	10	A	X7R	Nickel	500	-	20A	1000pF	C	-	-	-	5	20	35	40
L10080-042N	1.5	35	15	7	10	A	X7R	Nickel	-	500	20A	1000pF	C	-	-	-	5	20	35	40
L10080-023N	2.5	35	15	7	10	A	X7R	Nickel	500	-	50A	2200pF	C	-	-	-	8	24	35	43
L10080-032AN	2.5	35	15	7	10	A	Y5V	Nickel	-	250	50A	3300pF	C	-	-	-	10	27	38	45
L10080-024N	1.5	35	15	7	10	A	Y5V	Nickel	-	250	20A	3300pF	C	-	-	-	10	27	38	45
L10080-032N	2.5	35	15	7	10	A	Y5V	Nickel	-	220	50A	4700pF	C	-	-	-	13	30	40	50
L10080-032BN	2.5	35	15	7	10	A	Y5V	Nickel	100	-	50A	5000pF	C	-	-	-	13	30	40	50
L10080-009N	1.5	35	15	7	10	A	X7R	Silver	100	-	25A	0.01µF	C	-	-	4	21	35	50	58
L10080-026N	2.5	35	15	7	10	A	X7R	Nickel	500	-	40A	0.01µF	C	-	-	4	21	35	50	58
L10080-028N	1.5	35	15	7	10	B	X7R	Nickel	500	-	15A	0.05µF	C	-	-	15	34	45	58	60
L10080-018N	2	35	15	7	10	A	X7R	Nickel	60	-	50A	0.1µF	C	-	5	22	40	47	65	≥ 65
L10080-044N	2	35	15	7	10	C	X7R	Nickel	60	-	50A	0.1µF	C	-	5	22	40	47	65	≥ 65
L10080-014N	1.5	35	15	7	10	A	X7R	Nickel	100	-	20A	1.0µF	C	5	20	38	52	65	70	≥ 80
L10080-049N	1.5	35	15	7	10	A	X7R	Nickel	100	-	20A	2.0µF	C	17	30	50	63	70	75	≥ 80

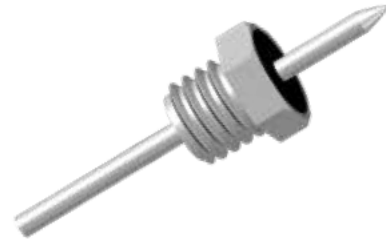
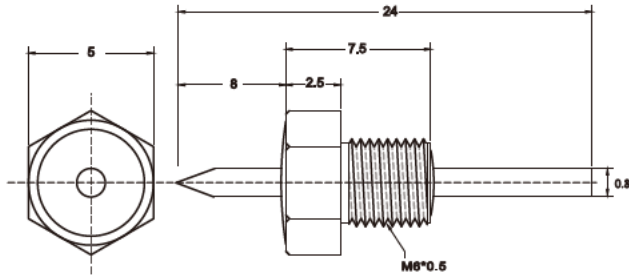
S14 M10 Series :



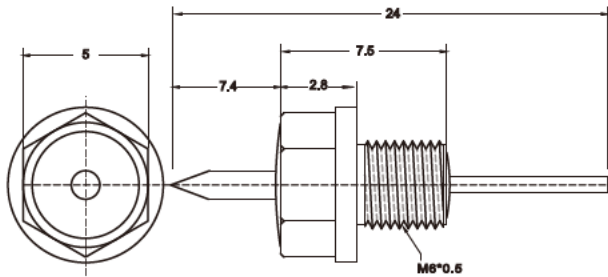
Part Num.	Diel.	Plate	Rated Vol.		I	E.C.
			DC	AC		
L140100-004N	X7R	Nickel	-	500	20A	C

Cap.	Insertion Loss (dB)						
	10 KHZ	100 KHZ	1 MHZ	10 MHZ	100 MHZ	1 GHZ	10 GHZ
1000pF	-	-	-	5	20	35	40

Resin Sealed Bolt-in Filters (Special)

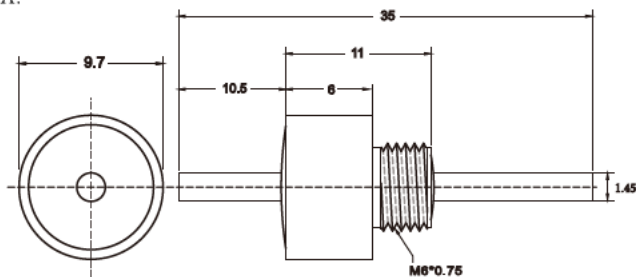


Part Num.	Diel.	Plate	Rated Vol.		I	Cap.	E.C.	Insertion Loss (dB)							
			DC	AC				10 KHZ	100 KHZ	1 MHz	10 MHz	100 MHz	1 GHz	10 GHz	
L5060-001	X7R	Silver	200	-	10A	1500PF	C	-	-	-	5	22	35	40	

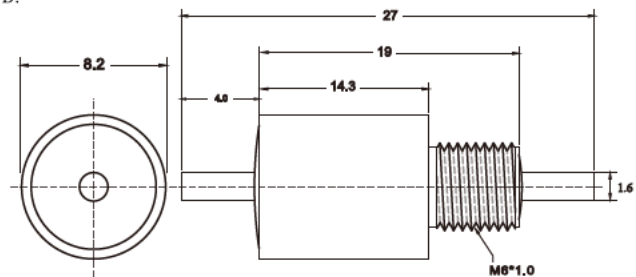


Part Num.	Diel.	Plate	Rated Vol.		I	Cap.	E.C.	Insertion Loss (dB)							
			DC	AC				10 KHZ	100 KHZ	1 MHz	10 MHz	100 MHz	1 GHz	10 GHz	
L5060-001A	X7R	Silver	200	-	10A	1500PF	C	-	-	-	5	22	35	40	

A.

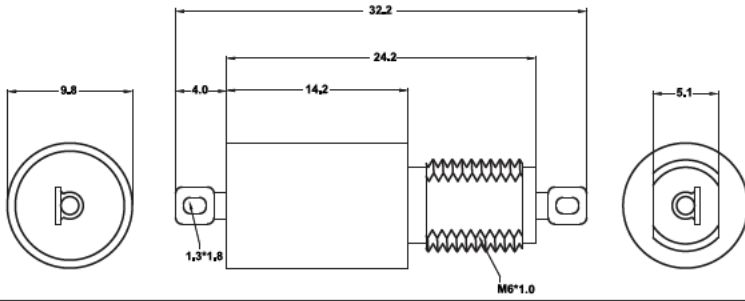


B.

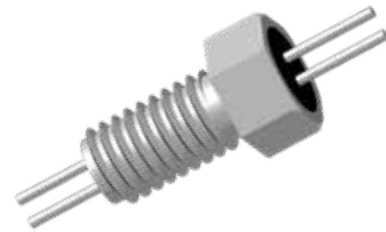
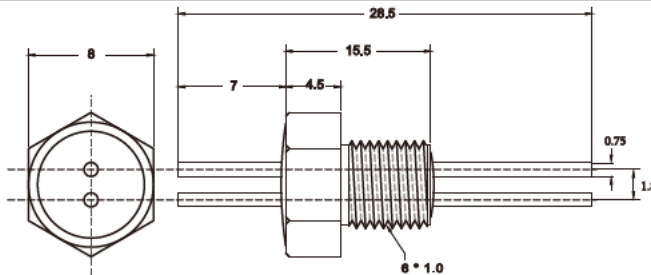


Part Num.	Size	Diel.	Plate	Rated Vol.		I	Cap.	E.C.	Insertion Loss (dB)							
				DC	AC				10 KHZ	100 KHZ	1 MHz	10 MHz	100 MHz	1 GHz	10 GHz	
L8260-001	B	X7R	Gold	50	-	15A	58000pF	C	-	-	15	34	45	60	≥60	
L8260-002	B	X7R	Gold	50	-	15A	680000pF	C	5	20	35	50	62	65	≥70	
L9860-001	A	X7R	Silver	100	-	15A	1.5μF	C	10	26	42	57	70	75	≥80	

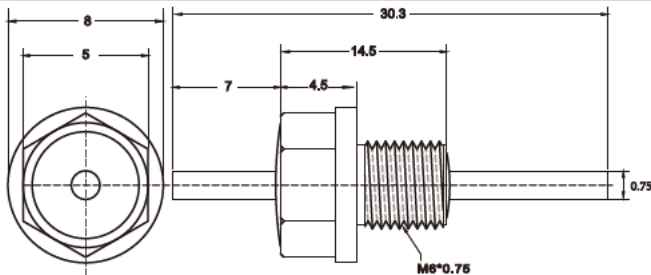
Resin Sealed Bolt-in Filters (Special)



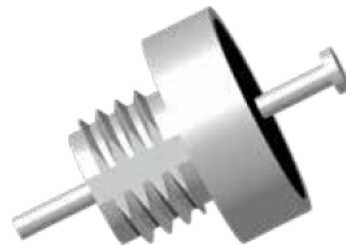
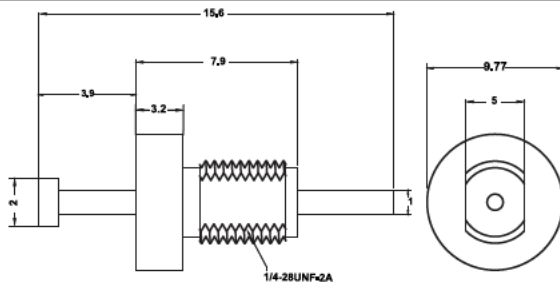
Part Num.	Size				Diel.	Plate	Rated Vol.		I	Cap.	E.C.	Insertion Loss (dB)							
	L	L1	L2	M			DC	AC				10 KHZ	100 KHZ	1 MHZ	10 MHZ	100 MHZ	1 GHZ	10 GHZ	
L9860-004	32.2	24.2	14.2	M6*1.0	X7R	Silver	220	-	15A	0.2μF*2	PI	-	13	42	>70	>70	>70	>70	
L9860-002	32.2	24.2	14.2	M6*1.0	X7R	Silver	80	-	15A	1.4μF*2	PI	12	29	65	>70	>70	>70	>70	
L9860-003	32.2	24.2	14.2	M6*1.0	X7R	Silver	80	-	15A	4.0μF	C	23	35	55	65	70	75	≥80	
L1/4-28UNF-2A-008A	17.5	9.3	4.5	1/4-28UNF-2A	X7R	Silver	80	-	15A	1.2μF	LC	4	22	42	62	70	>70	>70	
L1/4-28UNF-2A-008	17.5	9.3	4.5	1/4-28UNF-2A	X7R	Silver	100	-	15A	1.4μF	LC	6	23	44	63	70	>70	>70	



Part Num.	Diel.	Plate	Rated Vol.		I	Cap.	E.C.	Insertion Loss (dB)										
			DC	AC				10 KHZ	100 KHZ	1 MHZ	10 MHZ	100 MHZ	1 GHZ	10 GHZ				
L8060-075	-	Silver	500	-	7A	<10pF	C	-	-	-	-	-	-	-	-	-	-	7

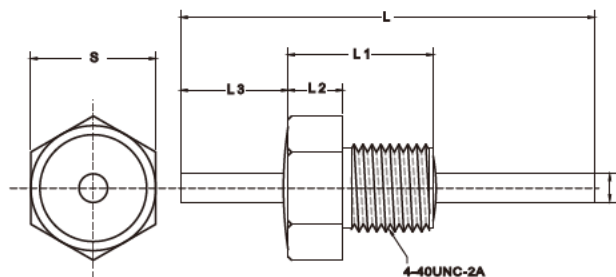


Part Num.	Diel.	Plate	Rated Vol.		I	Cap.	E.C.	Insertion Loss (dB)										
			DC	AC				10 KHZ	100 KHZ	1 MHZ	10 MHZ	100 MHZ	1 GHZ	10 GHZ				
L8060-076	X7R	Silver	50	-	7A	0.05μF*2	PI	-	4	18	64	>70	>70	>70	>70	>70	>70	>70
L8060-094	Y5U	Silver	200	-	7A	3000pF	C	-	-	-	10	25	38	45				



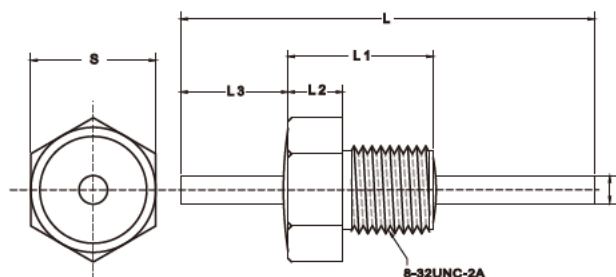
Part Num.	Diel.	Plate	Rated Vol.		I	Cap.	E.C.	Insertion Loss (dB)										
			DC	AC				10 KHZ	100 KHZ	1 MHZ	10 MHZ	100 MHZ	1 GHZ	10 GHZ				
L1/4-28UNF-2A-001	X7R	Silver	50	-	15A	1.4μF	LC	6	23	44	63	70	>70	>70				

M4-40UNC-2A Series:



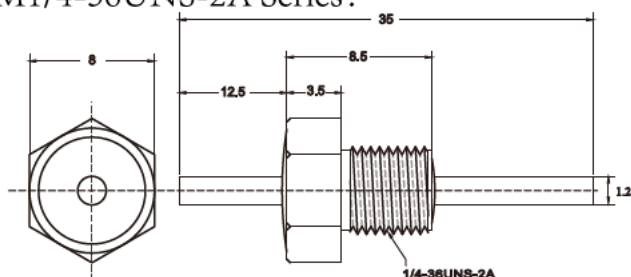
Part Num.	Size						Diel.	Plate	Rated Vol.		I	Cap.	E.C.	Insertion Loss (dB)							
	S	d	L	L1	L2	L3			DC	AC				10 KHZ	100 KHZ	1 MHZ	10 MHZ	100 MHZ	1 GHZ	10 GHZ	
L4-40UNC-2A-016N	4.0	0.75	22	8.6	3	9	SL	Nickel	300	-	7A	100pF	LC	-	-	-	-	6	23	>70	
L4-40UNC-2A-017N	4.0	0.75	22	8.6	3	9	SL	Nickel	300	-	7A	500pF	LC	-	-	-	2	19	37	>70	
L4-40UNC-2A-002N	3.2	0.75	30.3	5.4	1.8	9.5	X7R	Nickel	100	-	10A	1000pF	C	-	-	-	5	20	35	40	
L4-40UNC-2A-011N	4.0	0.75	22	8.6	3	9	X7R	Nickel	300	-	7A	1200pF	LC	-	-	-	6	25	44	>70	
L4-40UNC-2A-008N	3.2	0.75	19	5.4	1.8	9	X7R	Nickel	100	-	7A	0.01μF	C	-	-	4	21	35	50	58	
L4-40UNC-2A-010N	4.0	0.75	22	8.6	3	9	X7R	Nickel	50	-	7A	0.01μF	LC	-	-	3	20	40	60	>70	
L4-40UNC-2A-001N	3.2	0.75	11.4	5.4	1.8	3	X7R	Nickel	50	-	10A	0.027μF	C	-	-	10	30	41	55	60	
L4-40UNC-2A-003N	3.2	0.75	30.3	5.4	1.8	9.5	X7R	Nickel	50	-	7A	0.1μF	C	-	5	22	40	47	65	≥65	

M8-32UNC-2A Series:



Part Num.	Size						Diel.	Plate	Rated Vol.		I	Cap.	E.C.	Insertion Loss (dB)							
	S	d	L	L1	L2	L3			DC	AC				10 KHZ	100 KHZ	1 MHZ	10 MHZ	100 MHZ	1 GHZ	10 GHZ	
L8-32UNC-2A-017	4.75	0.8	30.3	9.2	2.4	7.5	KL	Silver	100	-	10A	125pF*2	PI	-	-	-	-	11	42	>70	
L8-32UNC-2A-010A	4.75	1	28.3	9.2	2.4	12.0	X7R	Silver	100	-	10A	1000pF	C	-	-	-	5	20	35	40	
L8-32UNC-2A-031	4.75	0.75	30.3	9.2	2.4	7	X7R	Silver	200	-	10A	1000pF*2	PI	-	-	-	10	44	68	>70	
L8-32UNC-2A-001	5	0.75	28.3	5.4	1.7	12.5	X7R	Silver	100	-	7A	1500pF*2	PI	-	-	-	13	51	>70	>70	
L8-32UNC-2A-003	5	1	28.3	5.1	1.52	12.5	Y5U	Silver	100	-	10A	2000pF	C	-	-	-	6	23	35	40	
L8-32UNC-2A-030	4.75	1.2	28.3	9.2	2.4	11	Y5U	Silver	100	-	15A	2700pF	C	-	-	-	10	25	38	45	
L8-32UNC-2A-012A	4.75	0.8	30.3	9.2	2.4	7.5	Y5U	Silver	200	-	7A	2750pF*2	PI	-	-	-	18	60	>70	>70	
L8-32UNC-2A-008	5	1	28.3	5.1	1.52	12.5	X7R	Silver	200	-	10A	500pF	C	-	-	-	10	28	35		
L8-32UNC-2A-028	4.75	1	28.3	9.2	2.4	12	X7R	Silver	50	-	10A	0.27μF	C	-	10	29	47	60	65	≥70	

S8 M1/4-36UNS-2A Series:



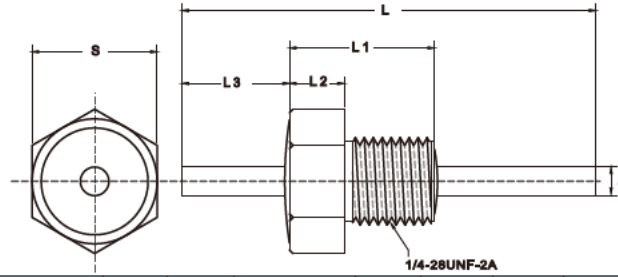
Part Num.	Diel.	Plate	Rated Vol.		I	E.C.
			DC	AC		
L1/4-36UNS-2A-001N	X7R	Silver	100	-	15A	C

Cap.	Insertion Loss (dB)							
	10 KHZ	100 KHZ	1 MHZ	10 MHZ	100 MHZ	1 GHZ	10 GHZ	
1000pF	-	-	-	5	20	35	40	

Resin Sealed Bolt-in Filters (UTS)

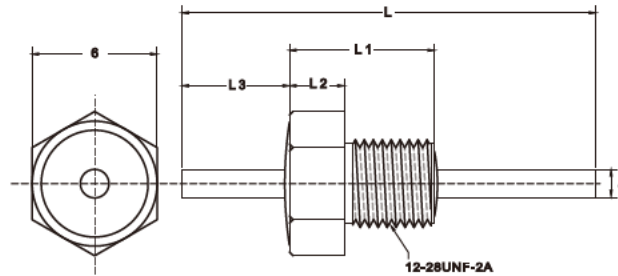


M1/4-28UNF-2A Series:



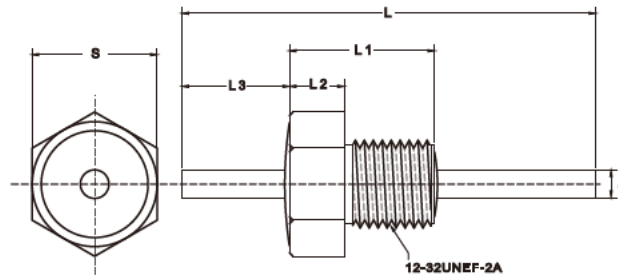
Part Num.	Size						Diel.	Plate	Rated Vol.		I	Cap.	E.C.	Insertion Loss (dB)						
	S	d	L	L1	L2	L3			DC	AC				10 KHZ	100 KHZ	1 MHZ	10 MHZ	100 MHZ	1 GHZ	10 GHZ
L1/4-28UNF-2A-007	8	1.3	25.4	12	6.4	6.7	SL	Silver	500	-	25A	100pF	C	-	-	-	-	3	20	27
L1/4-28UNF-2A-016	9.5	1	18.8	11.7	3.8	3.3	X7R	Silver	400	-	15A	0.12μF	C	-	5	22	40	47	65	≥65
L1/4-28UNF-2A-012	10	1	15.6	7.9	3.2	3.9	X7R	Silver	100	-	15A	0.5μF	LC	-	-	17	38	51	70	>70
L1/4-28UNF-2A-009	9.8	1.2	27.0	19	14.2	4	X7R	Silver	80	-	15A	1.4μF*2	PI	12	29	65	>70	>70	>70	>70
L1/4-28UNF-2A-010	9.8	1.2	27	19	14.2	4	X7R	Silver	80	-	15A	4.0μF	C	23	35	55	65	70	75	≥80

S6 M12-28UNF-2A Series:



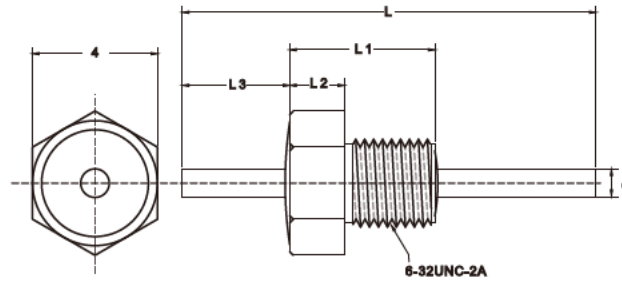
Part Num.	Size					Diel.	Plate	Rated Vol.		I	Cap.	E.C.	Insertion Loss (dB)						
	d	L	L1	L2	L3			DC	AC				10 KHZ	100 KHZ	1 MHZ	10 MHZ	100 MHZ	1 GHZ	10 GHZ
L12-28UNF-2A-003	0.8	28.3	12	4	7	X7R	Silver	-	150	7A	3000pF*2	PI	-	-	-	20	62	>70	>70
L12-28UNF-2A-006A	1.3	25.4	12	4	6.35	X7R	Silver	500	-	20A	10000pF	C	-	-	4	21	35	50	58

M12-32UNEF-2A Series:



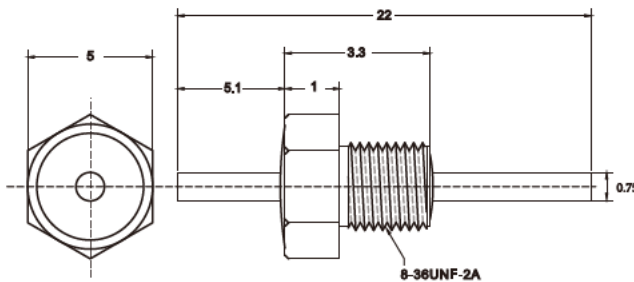
Part Num.	Size						Diel.	Plate	Rated Vol.		I	Cap.	E.C.	Insertion Loss (dB)						
	S	d	L	L1	L2	L3			DC	AC				10 KHZ	100 KHZ	1 MHZ	10 MHZ	100 MHZ	1 GHZ	10 GHZ
L12-32UNEF-2A-003N	6	1	52	10	4	12.5	-	Nickel	500	-	10A	-	-	-	-	-	-	-	-	-
L12-32UNEF-2A-001	7.45	0.75	29	17.5	7.2	5	X7R	Silver	70	-	10A	0.05μF*2	PI	-	4	18	64	>70	>70	>70

Resin Sealed Bolt-in Filters (UTS)



Part Num.	Size					Diel.	Plate	Rated Vol.		I	Cap.	E.C.	Insertion Loss (dB)						
	d	L	L1	L2	L3			DC	AC				10 KHZ	100 KHZ	1 MHZ	10 MHZ	100 MHZ	1 GHZ	10 GHZ
L6-32UNC-2A-001	0.7	30.3	9.1	3.2	8.3	X7R	Silver	200	-	10A	330pF	LC	-	-	-	-	15	34	>70
L6-32UNC-2A-003	0.75	30.3	9.1	3.2	8.3	X7R	Silver	25	-	7A	0.1μF	C	-	5	22	40	47	65	≥65

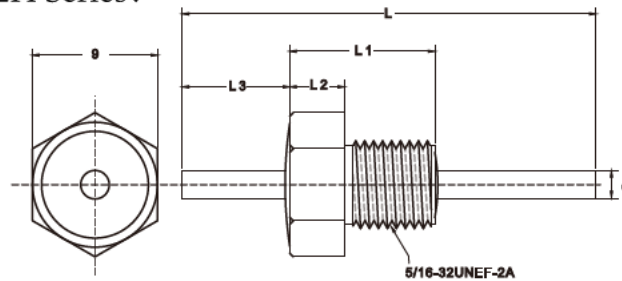
S5 M8-36UNF-2A Series:



Part Num.	Diel.	Plate	Rated Vol.		I	E.C.
			DC	AC		
L8-36UNF-2A-001	X7R	Silver	200	-	7A	C

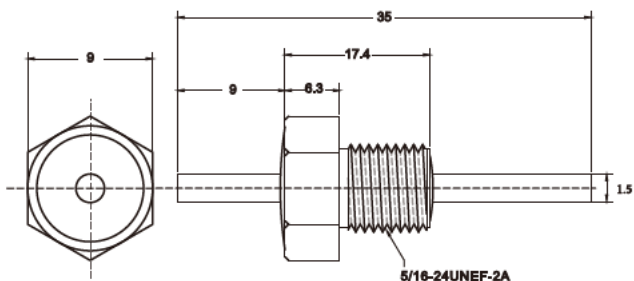
Cap.	Insertion Loss (dB)						
	10 KHZ	100 KHZ	1 MHZ	10 MHZ	100 MHZ	1 GHZ	10 GHZ
100pF	-	-	-	-	3	20	27

S9 M5/16-32UNEF-2A Series:



Part Num.	Size					Diel.	Plate	Rated Vol.		I	Cap.	E.C.	Insertion Loss (dB)						
	d	L	L1	L2	L3			DC	AC				10 KHZ	100 KHZ	1 MHZ	10 MHZ	100 MHZ	1 GHZ	10 GHZ
L5/16-32UNEF-2A-002A	1.5	35	17.4	6.3	9	X7R	Silver	300	-	20A	1500pF*2	PI	-	-	-	13	51	>70	>70
L5/16-32UNEF-2A-001A	1.5	35	17.4	6.3	9	X7R	Silver	700	-	25A	2000pF*2	PI	-	-	-	15	55	>70	>70
L5/16-32UNEF-2A-005	1.5	35	17.4	6.3	8.5	X7R	Silver	700	-	20A	3000pF*2	PI	-	-	-	20	62	>70	>70

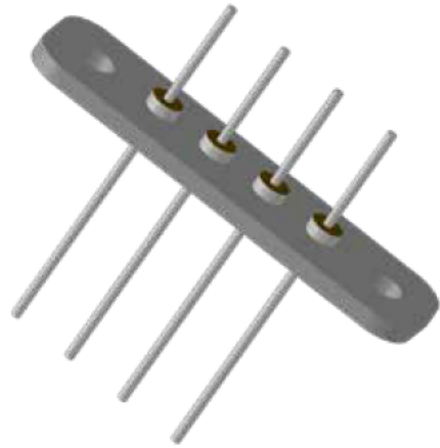
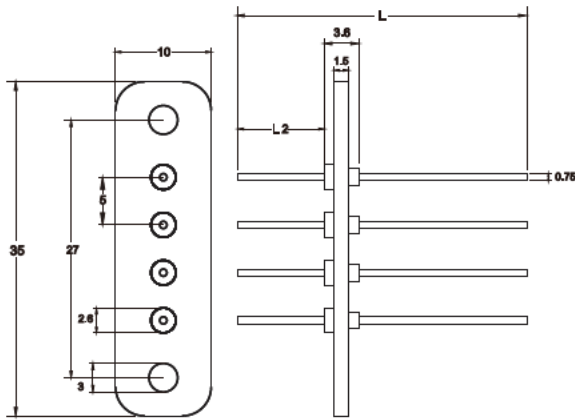
S9 M5/16-24UNEF-2A Series:



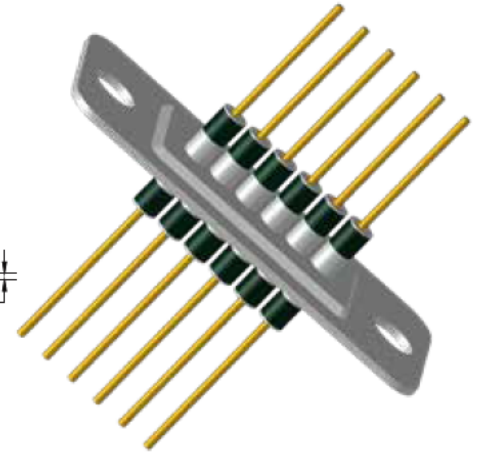
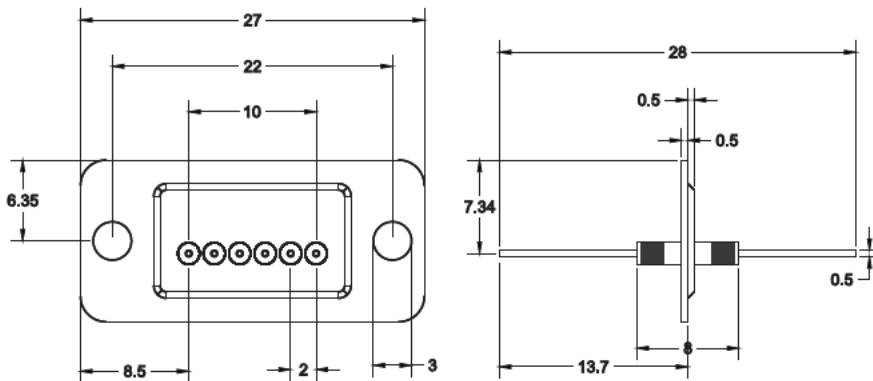
Part Num.	Diel.	Plate	Rated Vol.		I	E.C.
			DC	AC		
L5/16-24UNEF-2A-006	X7R	Silver	500	350	25A	PI

Cap.	Insertion Loss (dB)						
	10 KHZ	100 KHZ	1 MHZ	10 MHZ	100 MHZ	1 GHZ	10 GHZ
1000pF*2	-	-	-	10	44	68	>70

Filtered Arrays

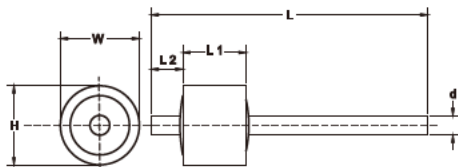


Part Num.	Size		Diel.	Plate	Rated Vol.		I	Cap.	Insertion Loss (dB)						
	L	L2			DC	AC			10 KHZ	100 KHZ	1 MHZ	10 MHZ	100 MHZ	1 GHZ	10 GHZ
ZL350100-102*4-001	30	10	X7R	Tin	50	-	7A	1000pF*4	-	-	-	5	20	35	40
ZL350100-102*4-002	15.6	4	X7R	Tin	50	-	7A	1000pF*4	-	-	-	5	20	35	40



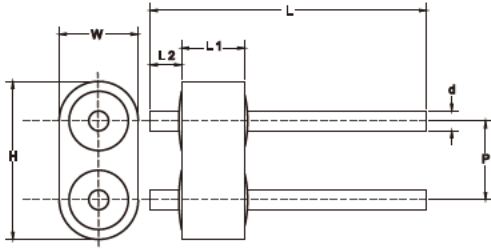
Part Num.	Diel.	Plate	Rated Vol.		I	Cap.	Insertion Loss (dB)						
			DC	AC			10 KHZ	100 KHZ	1 MHZ	10 MHZ	100 MHZ	1 GHZ	10 GHZ
ZL270127*402*6-001	Y5U	Silver	100	-	5A	4000pF*6	-	-	-	15	55	>70	>70

Miniature RF Filters

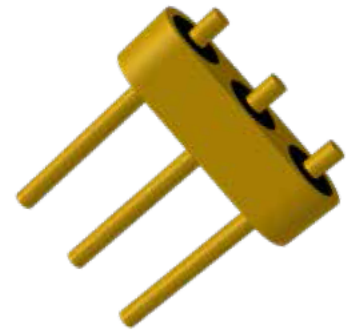
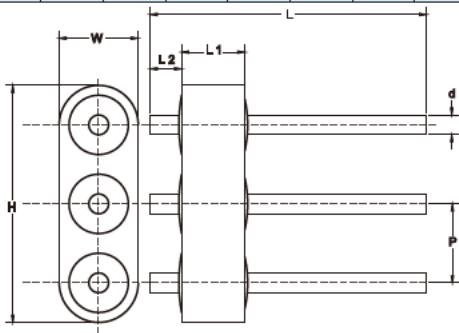


Part Num.	Size						Diel.	Plate	Rated Vol.		I	Cap.	Insertion Loss (dB)						
	H	W	d	L	L1	L2			DC	AC			10 KHZ	100 KHZ	1 MHZ	10 MHZ	100 MHZ	1 GHZ	10 GHZ
HA1515-001	1.5	1.5	0.5	3	1.4	0.8	X7R	Gold	20	-	7A	10pF	-	-	-	-	-	5	12
HA2020-002	2	2	0.5	7	1.6	0.8	X7R	Gold	20	-	7A	10pF	-	-	-	-	-	5	12

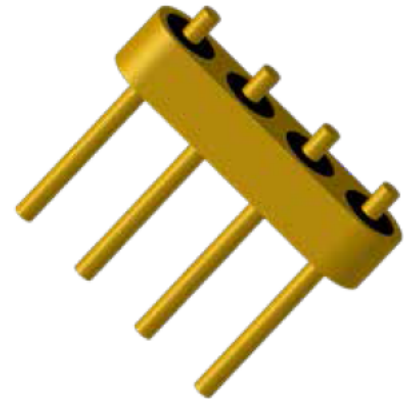
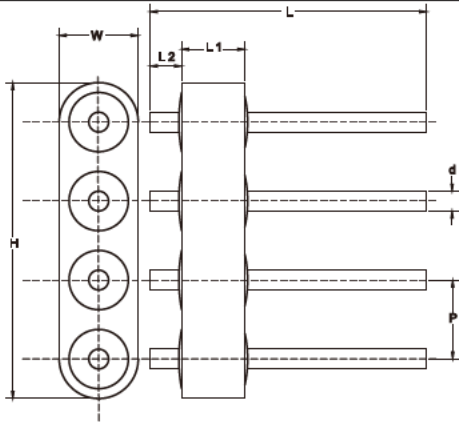
Miniature RF Filters



Part Num.	Size							Diel.	Plate	Rated Vol.		I	Cap.	Insertion Loss (dB)						
	H	W	P	d	L	L1	L2			DC	AC			10 KHZ	100 KHZ	1 MHz	10 MHz	100 MHz	1 GHZ	10 GHZ
HA2715-001	2.7	1.5	1.27	0.5	3	1.4	0.8	X7R	Gold	20	-	7A	10pF	-	-	-	-	-	5	12
HA4020-002	4	2	2	0.5	7	1.6	0.8	X7R	Gold	20	-	7A	10pF	-	-	-	-	-	5	12



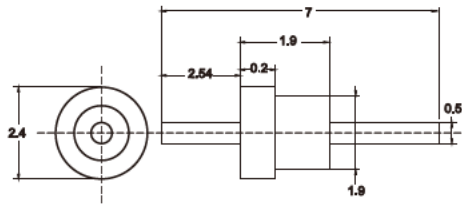
Part Num.	Size							Diel.	Plate	Rated Vol.		I	Cap.	Insertion Loss (dB)						
	H	W	P	d	L	L1	L2			DC	AC			10 KHZ	100 KHZ	1 MHz	10 MHz	100 MHz	1 GHZ	10 GHZ
HA4015-001	4	1.5	1.27	0.5	3	1.4	0.8	X7R	Gold	20	-	7A	10pF	-	-	-	-	-	5	12
HA6020-002	6	2	2	0.5	7	1.6	0.8	X7R	Gold	20	-	7A	10pF	-	-	-	-	-	5	12



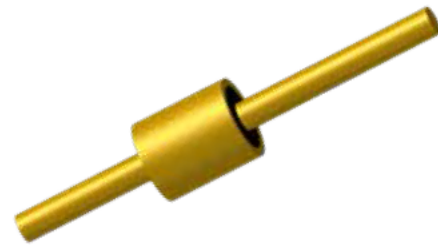
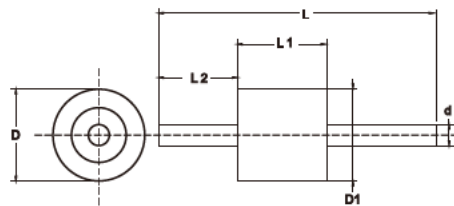
Part Num.	Size							Diel.	Plate	Rated Vol.		I	Cap.	Insertion Loss (dB)						
	H	W	P	d	L	L1	L2			DC	AC			10 KHZ	100 KHZ	1 MHz	10 MHz	100 MHz	1 GHZ	10 GHZ
HA5315-001	5.3	1.5	1.27	0.5	3	1.4	0.8	X7R	Gold	20	-	7A	10pF	-	-	-	-	-	5	12
HA8020-002	8	2	2	0.5	7	1.6	0.8	X7R	Gold	20	-	7A	10pF	-	-	-	-	-	5	12

Note: Some models can be gold bonding, please consult our sales staff for details.

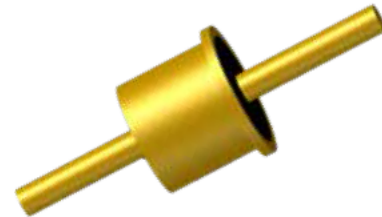
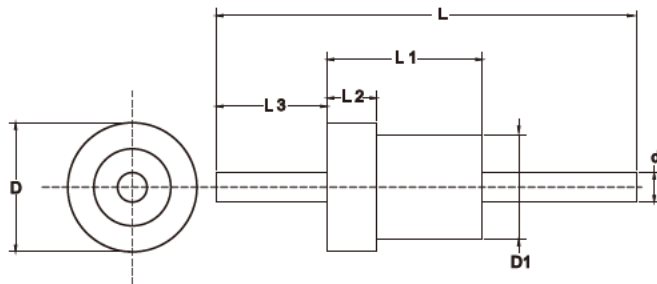
Hermetically Sealed Filters



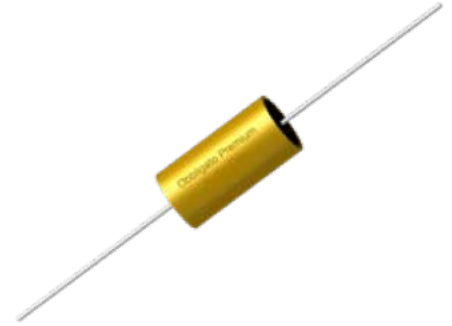
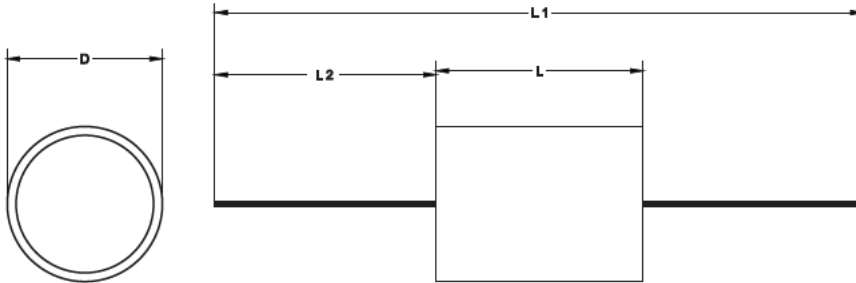
Part Num.	Diel.	Plate	Rated Vol.		I	Cap.	Insertion Loss (dB)						
			DC	AC			10 KHZ	100 KHZ	1 MHZ	10 MHZ	100 MHZ	1 GHZ	10 GHZ
HB2419-001	SL	Gold	200	-	7A	50pF	-	-	-	-	-	10	20
HB2419-002	SL	Gold	50	-	7A	5000pF	-	-	-	13	30	40	50



Part Num.	Size						Diel.	Plate	Rated Vol.		I	Cap.	Insertion Loss (dB)						
	D	D1	d	L	L1	L2			DC	AC			10 KHZ	100 KHZ	1 MHZ	10 MHZ	100 MHZ	1 GHZ	10 GHZ
HB2020-001	2	2	0.7	11	2.5	5	SL	Gold	50	-	3A	100pF	-	-	-	-	3	20	27
HB2828-001	2.8	2.8	0.8	19	3	9	X7R	Gold	100	-	7A	0.01μF	-	-	4	21	35	50	58

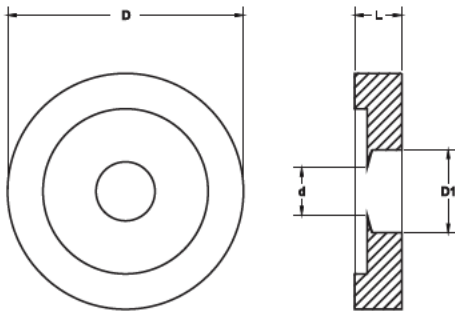


Part Num.	Size							Diel.	Plate	Rated Vol.		I	Cap.	Insertion Loss (dB)						
	D	D1	d	L	L1	L2	L3			DC	AC			10 KHZ	100 KHZ	1 MHZ	10 MHZ	100 MHZ	1 GHZ	10 GHZ
H3630-006	3.6	3	0.8	10.2	2.8	0.5	3.9	KL	Gold	200	-	7A	100pF	-	-	-	-	3	20	27
H3630-004	3.6	3	0.8	10.2	2.8	0.5	3.9	X7R	Gold	100	-	7A	5000pF	-	-	-	13	30	40	50
H3630-005A	3.55	3.05	0.75	10.2	2.8	0.25	3.9	X7R	Gold	50	-	5A	0.027μF	-	-	10	30	41	55	60
H4033-022	4	3.3	0.8	16.8	2.8	0.5	6.8	SL	Gold	200	-	7A	25pF	-	-	-	-	8	15	
H4033-006	4	3.3	0.8	16.8	2.8	0.5	6.8	SL	Gold	200	-	7A	100pF	-	-	-	3	20	27	
H4033-005	4	3.3	0.8	16.8	2.8	0.5	6.8	X7R	Gold	100	-	7A	5000pF	-	-	-	13	30	40	50
H4033-004	4	3.3	0.8	16.8	2.8	0.5	6.8	X7R	Gold	50	-	7A	10000pF	-	-	4	21	35	50	58
H4033-033	4	3.3	0.75	15.9	2.8	0.5	6.7	X7R	Gold	50	-	7A	0.015μF	-	-	5	18	35	50	60
H4033-014	4	3.3	0.8	16.8	2.8	0.5	6.8	X7R	Gold	50	-	7A	0.027μF	-	-	10	30	41	55	60

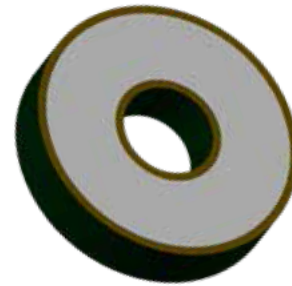
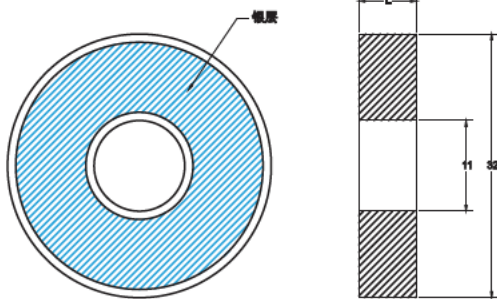


Part Num.	Size				Diel.	Plate	Rated Vol.		I	Cap.
	D	L	L1	L2			DC	AC		
TG1520-001	15	20	115	45	CBB20	-	630	-	7A	0.047 μ F
TG1520-002	15	20	115	45	CBB20	-	630	-	7A	0.1 μ F
TG1530-001	15	30	120	45	CBB20	-	630	-	7A	0.15 μ F
TG1530-002	15	30	125	45	CBB20	-	630	-	7A	0.22 μ F
TG1530-003	15	30	135	50	CBB20	-	630	-	7A	0.33 μ F
TG2030-001	20	30	135	50	CBB20	-	630	-	7A	0.47 μ F
TG2030-002	20	30	135	50	CBB20	-	630	-	7A	0.68 μ F
TG2030-003	20	30	185	75	CBB20	-	630	-	7A	1 μ F
TG2040-001	20	40	140	50	CBB20	-	630	-	7A	1.5 μ F
TG2040-002	20	40	200	80	CBB20	-	630	-	7A	2.2 μ F
TG3055-001	30	55	155	50	CBB20	-	630	-	7A	3.3 μ F
TG3055-002	30	55	200	70	CBB20	-	630	-	7A	4.7 μ F
TG3055-003	30	55	200	70	CBB20	-	630	-	7A	6.8 μ F
TG3055-004	30	55	300	120	CBB20	-	630	-	7A	10 μ F
TG3055-005	30	55	220	80	CBB20	-	630	-	7A	15 μ F
TG4565-001	45	65	210	70	CBB20	-	250	-	7A	22 μ F
TG4565-002	45	65	300	110	CBB20	-	250	-	7A	33 μ F
TG4565-003	45	65	290	110	CBB20	-	250	-	7A	47 μ F

Discoidal Capacitor (Single)

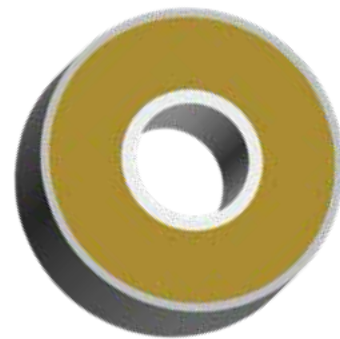
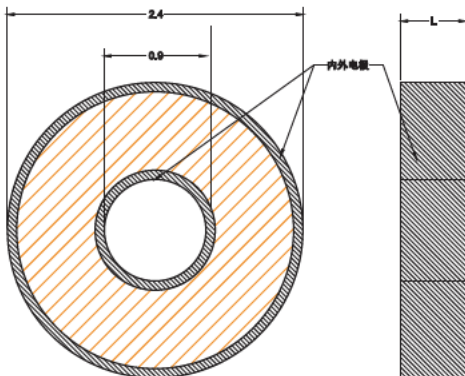


Part Num.	Size				Diel.	Plate	Rated Vol.		Cap.	Insertion Loss (dB)						
	D	D1	d	L			DC	AC		10 KHZ	100 KHZ	1 MHZ	10 MHZ	100 MHZ	1 GHZ	10 GHZ
HX12-001	20	7	5	5.2	Y5V	Tin	-	500	4700pF	-	-	-	13	30	40	50
HX12-002	20	7	5	4	Y5V	Tin	-	500	6800pF	-	-	-	15	30	42	50
HX12-003	17	7	5	3.9	Y5V	Tin	-	500	4700pF	-	-	-	13	30	40	50



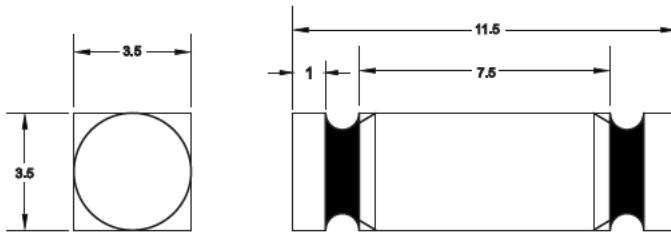
Part Num.	Size			Diel.	Plate	Rated Vol.		Cap.	Insertion Loss (dB)						
	D	d	L			DC	AC		10 KHZ	100 KHZ	1 MHZ	10 MHZ	100 MHZ	1 GHZ	10 GHZ
HZ320320-002	32	11	7	SL	Silver	1000	-	60pF~65pF	-	-	-	-	-	12	23
HZ320320-006	32	11	6.5	SL	Silver	1000	-	75pF	-	-	-	-	-	15	25
HZ320320-001	32	11	7	Y5U	Silver	1000	-	4700pF	-	-	-	13	30	40	50
HZ450125-001	45	12.5	10.5	SL	Silver	4000	-	145pF	-	-	-	-	4	20	28

Discoidal Capacitor (Multiple)

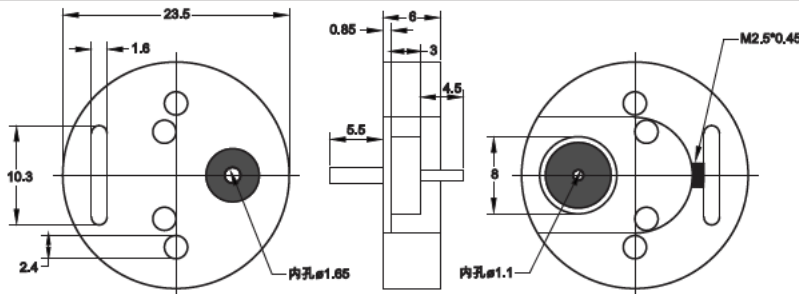


Part Num.	L	Diel.	Plate	Rated Vol.		Cap.	Insertion Loss (dB)						
				DC	AC		10 KHZ	100 KHZ	1 MHZ	10 MHZ	100 MHZ	1 GHZ	10 GHZ
D24-100V502-001	1	X7R	Silver	100	-	5000pF	-	-	-	13	30	40	50
D24-100V103-001	1	X7R	Silver	100	-	0.01μF	-	-	4	21	35	50	58
D24-100V153-001	1.2	X7R	Silver	100	-	0.015μF	-	-	5	18	35	50	60
D24-100V273-001	1.2	X7R	Silver	100	-	0.027μF	-	-	10	30	41	55	60

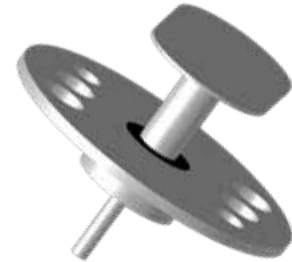
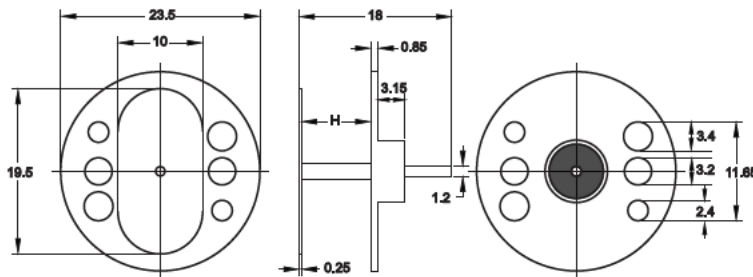
Special Feedthrough Filters



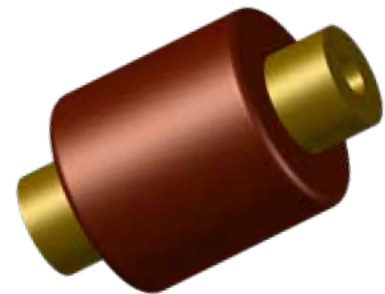
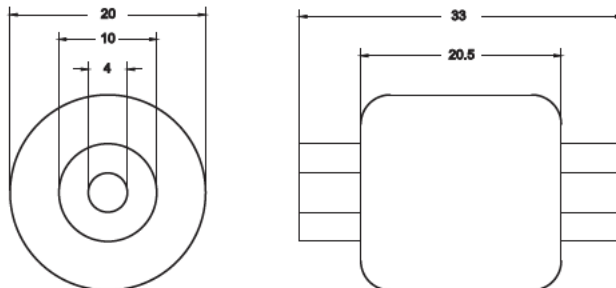
Part Num.	Diel.	Plate	Rated Vol.		I	Cap.	Insertion Loss (dB)						
			DC	AC			10 KHZ	100 KHZ	1 MHZ	10 MHZ	100 MHZ	1 GHZ	10 GHZ
T11535-001	X7R	Silver	100	-	10A	11000pF*2	-	-	9	37	>70	>70	>70



Part Num.	Diel.	Plate	Rated Vol.		I	Cap.	Insertion Loss (dB)						
			DC	AC			10 KHZ	100 KHZ	1 MHZ	10 MHZ	100 MHZ	1 GHZ	10 GHZ
T235115-001	X7R	Silver	100	-	15A	250pF	-	-	-	-	4	22	30



Part Num.	H	Diel.	Plate	Rated Vol.		I	Cap.	Insertion Loss (dB)						
				DC	AC			10 KHZ	100 KHZ	1 MHZ	10 MHZ	100 MHZ	1 GHZ	10 GHZ
T235180-002	8.2	DL	Silver	100	-	15A	150pF	-	-	-	-	4	20	28
T235180-001	7.8	X7R	Silver	100	-	15A	500pF	-	-	-	-	10	28	35



Part Num.	Diel.	Rated Vol.		I	Cap.
		DC	AC		
T200330-001	SL	15000	-	40A	200pF

