



# MIL-DTL 5015 CA Series Connectors

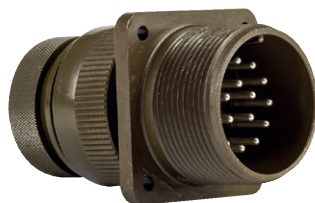
## Ideal for High Vibration Environments

ITT Cannon CA / 5015 connectors are heavy-duty, harsh-environment interconnects for the toughest applications. Originally developed for commercial aviation, this MIL-DTL 5015 (SAE-AS50151) derived and qualified connector series is used in applications as diverse as military, transportation, industrial and heavy equipment.

Our 5015 products include the MS, CV, and CA threaded series of cost-effective metal circular connectors.



MIL-DTL-5015 (A&B)



Threaded Commercial  
MIL-DTL 5015



CV 5015 Series III



MIL-DTL-5015 (E&R)

### Innovative Interconnect Benefits

- Lower cost options
- Threaded coupling system
- Silver plated contact option
- Polychloroprene insulator material
- Aluminum alloy shells available in a variety of plating options including: OD cadmium, black/green zinc chromate, and RoHS compliant nickel, electroless nickel and black zinc cobalt

### Key Features

- 5 polarizations available
- Rated 500 mating cycles
- Individual wire sealing grommet
- RoHS compliant options available
- Housings available in 4 plating options
- Bonded-In contacts providing 30 PSI sealing
- Available with high power contact sizes from 8 to 0
- Fitted with customized, metric/PG or standard endbell/adaptors

This document solely applies to the US-manufactured 5015/ CA Series products.

### Applications

- DEFENSE VEHICLES
- RAILROAD EQUIPMENT
- INDUSTRIAL MACHINERY
- TEST AND LIGHTING EQUIPMENT
- HEAVY-DUTY EQUIPMENT
- MOTION CONTROL
- TRAFFIC CONTROL SIGNALS

# MIL-DTL 5015 Selection Guide

Max. Voltage	Max. Current	Operating Temperature	Durability
1000-7000 rms	Up to 150 test amps	-55 to +200°C CV Series up to +200°C (Electroless Nickel)	500 mating cycles

5015 Product Line Talking Dog

CA/MS	3100	E	8S	P	W	A71
Designation	Shell Style	Class	Shell Size	Contact Type	Alternative Insert Position	Modification Code <sup>1</sup>

Series Prefix	MS-E/F/R/ER (MIL-C-5015)
Designation	MS - Conforms to MIL-DTL-5015
	CA - ITT Cannon designation
	CAR - RoHS compliant
Shell Style	3100 - Wall mounting receptacles
	3101 - Cable connecting plug
	3102 - Box mounting receptacle
	3106 - Straight plug
	3108 - 90° Angle plug
Class	A - Plastic (unsealed) insulator with solid endbell
	B - Plastic (unsealed) insulator with split endbell
	E - Resilient insulator and integral clamp for cable strain relief
	F - Resilient insulator and integral clamp for cable strain relief with O-ring seal under the coupling nut
	R - Environmental with resilient insulators and shortened light weight endbell
Shell Size	8S, 10S, 12, 12S, 14, 14S, 16S, 16, 18, 20, 22, 24, 28, 32, 36, 40, 44, 48
Contact Type	P - Pin
	S - Socket
Alternate Insert Position	W, X, Y, Z (omit for normal)
Modification Code	A71 - Electroless nickel hardware, RoHS
	A176 - Contacts hard gold over nickel, RoHS
	A206 - Black zinc cobalt hardware, RoHS
	F42 - Connector supplied without endbell, grommet and ferrule
	F80 - Snap-in crimp contacts
	F183 - Snap-in crimp contacts for metric conductors


When ordering MS3106F to the Cannon part number, designate CA06R.

<sup>1</sup> Modification code is used only when other than power contacts are to be installed (i.e., shielded, thermocouple, etc.)

## Why ITT

ITT is a focused multi-industrial company that designs and manufactures highly engineered critical components and customized technology solutions. ITT's Cannon brand is a leading global manufacturer of connector products serving international customers in aerospace, defense, medical, industrial and transportation end markets. ITT's Connector business, which also includes the Veam and BIW Connector Systems brand, manufactures and supplies a variety of connectors and interconnects that make it possible to transfer data, signal and power in an increasingly connected world.

Connect with your ITT Cannon representative today or visit us at [ittcannon.com](http://ittcannon.com)

Follow us 

**GERMANY - Weinstadt**  
+49.7151.699.0

**ITALY - Lainate**  
+39.02938721

**KOREA**  
+82.2.702.7111

**CHINA - Shenzhen City**  
+86.755.2726.7888

**CHINA - Shanghai**  
+ 86.21.2231.2222

**UK - Basingstoke**  
+44.1256.347400

**FRANCE**  
+33.1.60.04.93.93

**HONG KONG**  
+852.2732.2720

**JAPAN - Kanagawa**  
+81.462.57.2010

**MEXICO - Nogales**  
+52.631.311.0050

**SINGAPORE**  
+65 66974205

**USA - Irvine, CA**  
+1.800.854.3028