

Easily access to contacts because of the compact cable entry

- Easily adjustable in 3 planes of switch head.
- Interchanging of switch heads succeeded by easy operation of forked metal latch.
- The cable entry for SLKP switches enable simple cabling due to unrestricted access to contacts.
- In relation to switch body all the switch heads could be adjusted in 15° steps throughout 360°.
- Including snap action and slow break contacts, with positive opening operations and interchangeable connection component.

■ Characteristics

Rated operational characteristics	SL2KP	~AC-15;8300(Ue = 240 V, Ie = 3A);1the = 10A DC-13;Q300(Ue = 250 V, Ie = 0.27A), conforming to IEC60947-5-1 Appendix A, EN60947-5-1
	SL3KP	~AC-15;B300(Ue = 240 V, Ie = 1.5A);1the = 6A DC-13;R300(Ue = 250 V, Ie = 0.1 A), conforming to IEC60947-5-1 Appendix A, EN60947-5-1
Rated insulation voltage (Ui)	SL2KP	Ui = 500 V degree of pollution 3 conforming to EC60947-1 Ui = 300 V conforming to UL508, CSA C22-2 n° 14
	SL3KP	Ui = 400 V degree of pollution 3 conforming to EC60947-1 Ui = 300 V conforming to UL508, CSA C22-2 n° 14
Rated impulse withstand voltage	SL2KP	U imp= 6 kV conforming to IEC60947-1, IEC60664
	SL3KP	U imp= 4 kV conforming to IEC60947-1, IEC60664
Positive operation (Depending on model)		N/C contacts with positive opening operation conforming to IEC60947-5-1 Appendix K, EN60947-5-1
Resistance across terminals		;;25mO conforming to IEC60255-7 category 3
Electric shock protection	SL2KP	10 A gG(gl)
	SL3KP	6 A gG(gl)
Cabling	SL2KP • 151 and XE2S P2141	1 x 0.34mm' (max.); 2 x 1.5mm' (min.)
	SL2KP P21 • 1 and XE2N P31 • 1	1 x 0.5mm' (max.); 2 x 2.5mm' (min.)
	SL3KP P and XE3S P	1 x 0.34mm2 (max.); 1 x 1mm' or 2 x 0.75mm' (min.)
Minimum actuation speed (for head with end plunger)		SL2KP • 151 SL2KP P2141 and SL3KP P:001 m/minute SL2KP • 1SL2KP P31 • 1 and SL3KP P:6 m/minute
Electrical durability		• conforming to IEC60947-5-1 Appendix C • Utilization categories AC-1 5 and DC-1 3 • Maximum operating rate:3600 operating cycles/hour • Load factor:0.5
Packing		10pcs /Box

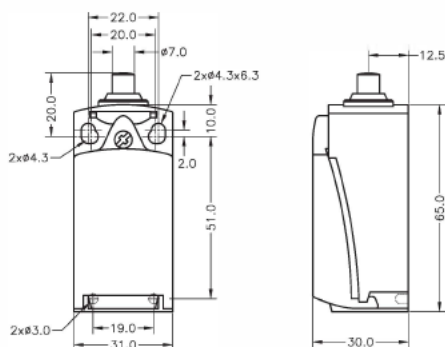
*Note: 1. Above values of these characteristics are initial values. 2. Above values of these characteristics may are depending on different models. If any requirements, pls contact our sales representative. 3. Above durability is for an ambient temperature of 5 to 35° and ambient humidity of 40% to 70%. If any requirements, pls contact our sales representative.

SLKP-00

- Standard Pin Plunger



Weight: 165.00g



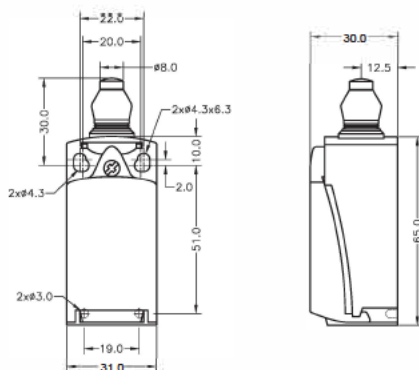
		SLKP-00
OF	MAX	6.5N
RF	MIN	1.5N
PT	MAX	2mm
OT	MIN	4mm
MD	MAX:1	4mm
OP		18mm
TT		(6mm)
DOT	MIN	3.2mm
DOF	MIN	20N

SLKP-01

- Sealed Pin Plunger



Weight: 168.00g



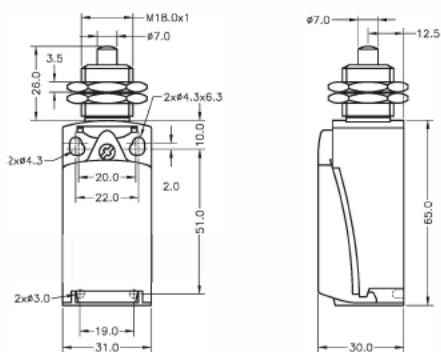
		SLKP-01
OF	MAX	6.5N
RF	MIN	1.5N
PT	MAX	2mm
OT	MIN	4mm
MD	MAX:1	4mm
OP		28mm
TT		(6mm)
DOT	MIN	3.2mm
DOF	MIN	20N

SLKP-07

- Panel Mounting Pin Plunger



Weight: 172.00g



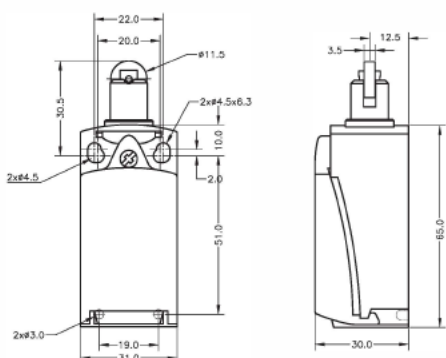
		SLKP-07
OF		6.5N
RF		1.5N
PT		2mm
OT		4mm
MD		1mm
OP		24mm
TT		(6mm)
DOT		3.2mm
DOF		20N

SLKP-20

- Standard Roller Lever



Weight: 170.00g



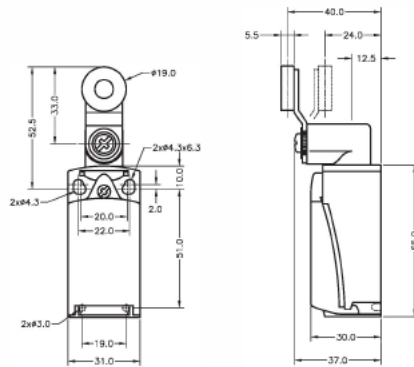
		SLKP-20
OF		6.5N
RF		1.5N
PT		2mm
OT		4mm
MD		1mm
OP		28.5mm
TT		(6mm)
DOT		3.2mm
DOF		20N

SLKP-40

• Vertical Standard Roller Lever



Wájt 1760g



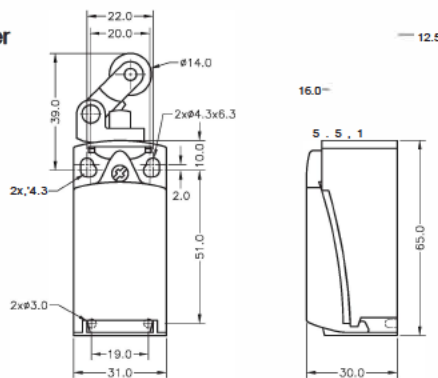
SLKP-40	
OF	5N
RF	0.5N
PT	18-27°
OT	40°
MD	14°
OP	-
TT	(80°)
DOT	50
DOF	20N

SLKP-47

Unidirectional Action Hinge Roller Lever



Wájt 1700g



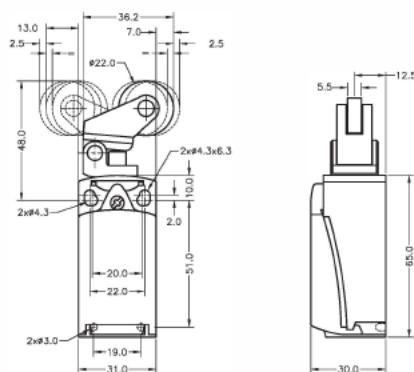
SLKP-47	
OF	5N
RF	0.8N
PT	4mm
OT	5mm
OP	35mm
TT	(9mm)
DOT	5.8mm
DOF	20N

SLKP-54

Horizontal/Vertical Action Hinge Roller Lever



Wájt 1750g



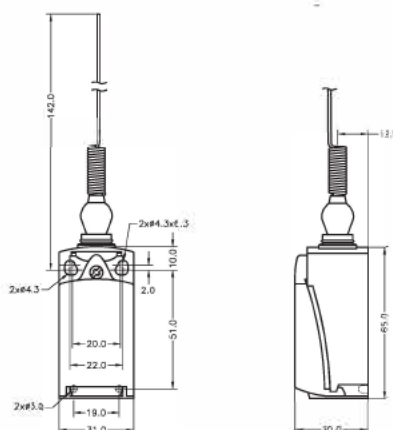
SLKP-54	
OF	5N
RF	0.8N
PT	4mm
OT	5mm
OP	44mm
TT	(9mm)
DOT	4.8mm
DOF	20N

SLKP-82

• Non-directional Cat Whisker



Wájt 1720g



SLKP-82	
OF	1.5N
PT	15°