

Economical and High Utility Enclosed Switch

- Enclosed Switches with Built-in Basic Switches for High Repeatability and Durability of 10 Million Operations Minimum.
- Panel mount versions have the same operating position as SLZ type of switch.
- Suitable for applications demanding higher mechanical strength, dustproof and drip-proof properties than those on basic switches. Resin molded terminal versions are available.
- UL, CUL, CCC & CE approved.

■ Characteristics

Degree of protection		IP67
Durability	Mechanical	10,000,000 operations min.
	Electrical	500,000 operations min.
Operating Speed		0.05mm/s~0.5m/s
Operating Frequency	Mechanical	120 operations /min
	Electrical	20 operations /min
Rated Frequency		50/60Hz
Insulation Resistance		100M Ω min.(at 500VDC)
Contact Resistance		15m Ω max. (initial value for the built-in switch when tested alone)
Dielectric Strength	Between terminals of same polarity	1,000 VAC 50/60Hz for 1min
	Between current-carrying metal parts and ground	2,000 VAC 50/60Hz 1min
	Between each terminal and non-current-carrying metal part	AC2,000V 50/60Hz for 1min
Rated insulation voltage (Ui)		1,000VAC
Pollution degree (Application environment)		3 (IEC947 5 1)
Rated operating current(Ie)		10A
Degree of protection against electric shock		Class II
Vibration Resistance	Malfunction	10 55 Hz 1.5 mm double amplitude
Shock Resistance	Destruction	1,000m/s ² min.
	Malfunction	100m/s ² min.
Ambient operating temperature range		10°C~+80°C with no icing
Ambient operating humidity range		35% ~ 95%RH
Packing		10pcs /Box

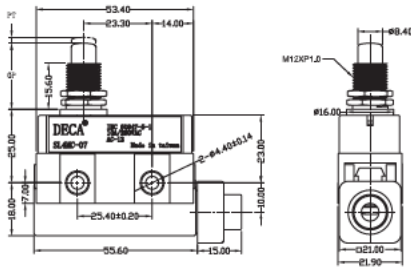
Note: 1. Above values of these characteristics are initial values. 2. Above values of these characteristics may be depending on different models. If any requirements, pls contact our sales representative. 3. Above durability is for an ambient temperature of 5 to 35° and ambient humidity of 40% to 70%. If any requirements, pls contact our sales representative.

SL4MC-07

●Panel Mount Plunger



Weight: 71.00g

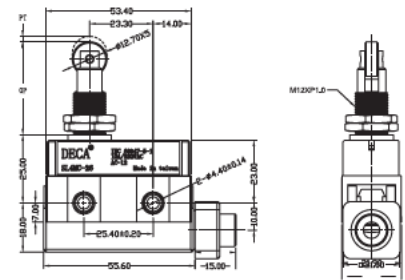


SL4MC-26

●Panel Mount Roller Plunger



Weight: 78.40g

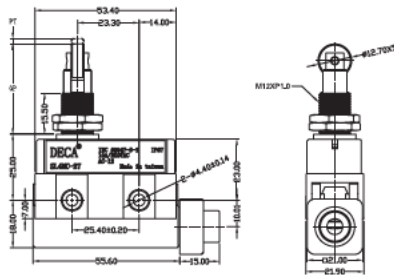


SL4MC-27

●Panel Mount Crossroller Plunger



Weight: 78.00g

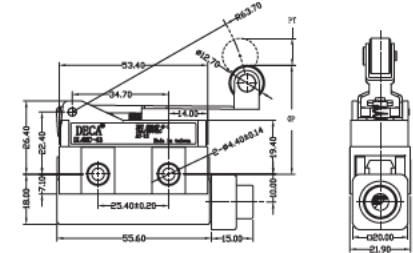


SL4MC-43

●Hinge Roller Lever



Weight: 64.00g

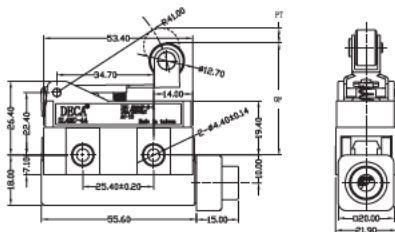


SL4MC-44

●Short Hinge Roller Lever



Weight: 62.70g

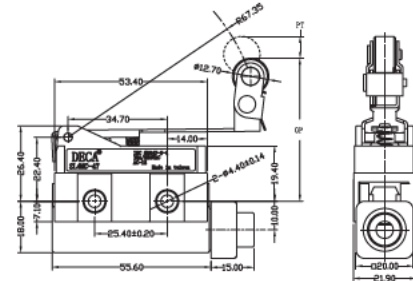


SL4MC-48

●One-Way Action Short Hinge Roller Lever



Weight: 67.50g

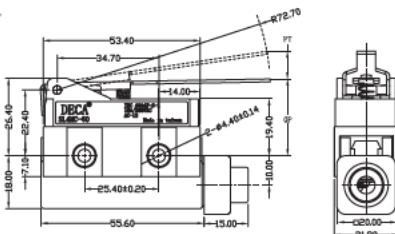


SL4MC-60

●Hinge Lever



Weight: 60.70g

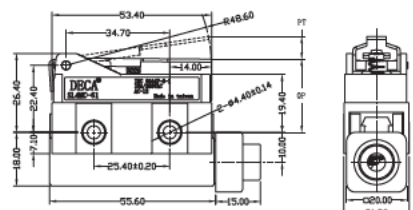


SL4MC-61

●Short Hinger Lever



Weight: 59.30g



Operating Characteristics

O.Characteristics		Model	SL4MC-07	SL4MC-26	SL4MC-27	SL4MC-43	SL4MC-44	SL4MC-48	SL4MC-60	SL4MC-61
OF	MAX		5 88N	5 88N	5 88N	1 96N	2 94N	2 94N	1 67N	2 55N
RF	MIN		0 98N	0 98N	0 98N	0 39N	0 39N	0 39N	0 25N	0 34N
PT	MAX		1 6mm	1 6mm	1 6mm	—	—	—	—	—
OT	MIN		5mm	5mm	5mm	5mm	2mm	2mm	4mm	2 5mm
MD	MAX		0 2mm	0 2mm	0 2mm	3mm	1 5mm	1 5mm	3mm	1 7mm
FP	MAX		—	—	—	51mm	47mm	57 2mm	36mm	33mm
OP			21 8 ± 1 2mm	33 4 ± 1 2mm	33 4 ± 1 2mm	40 ± 1mm	40 ± 1mm	40 ± 1mm	25 ± 1mm	25 ± 1mm