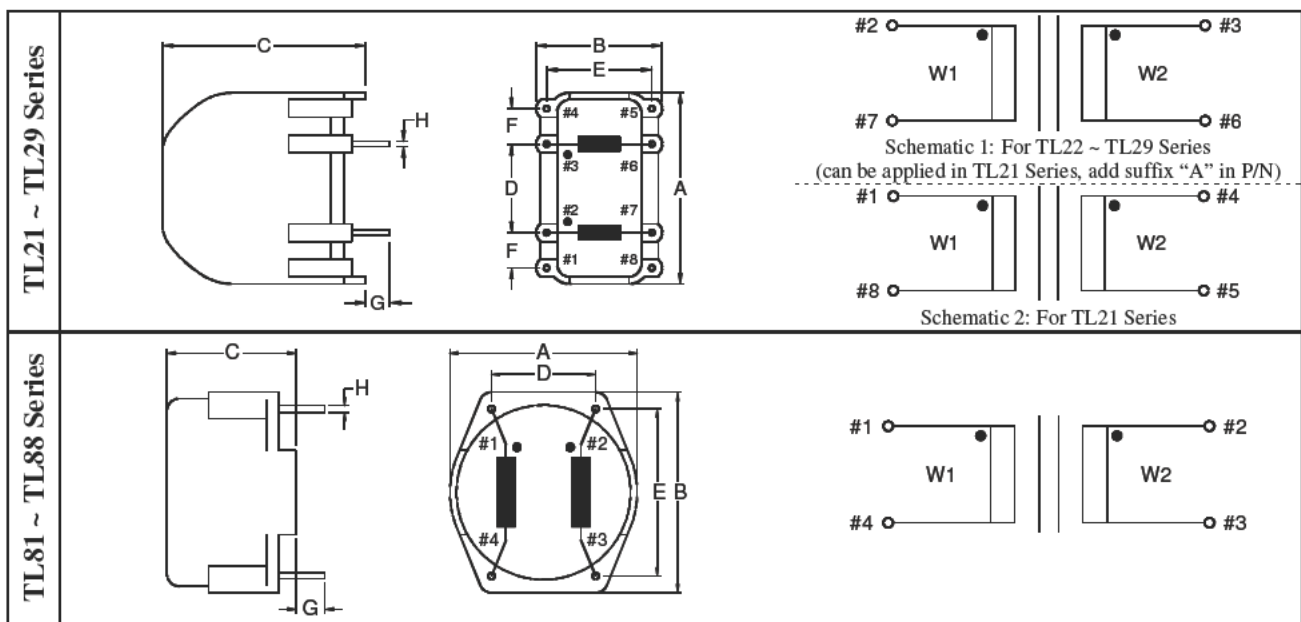


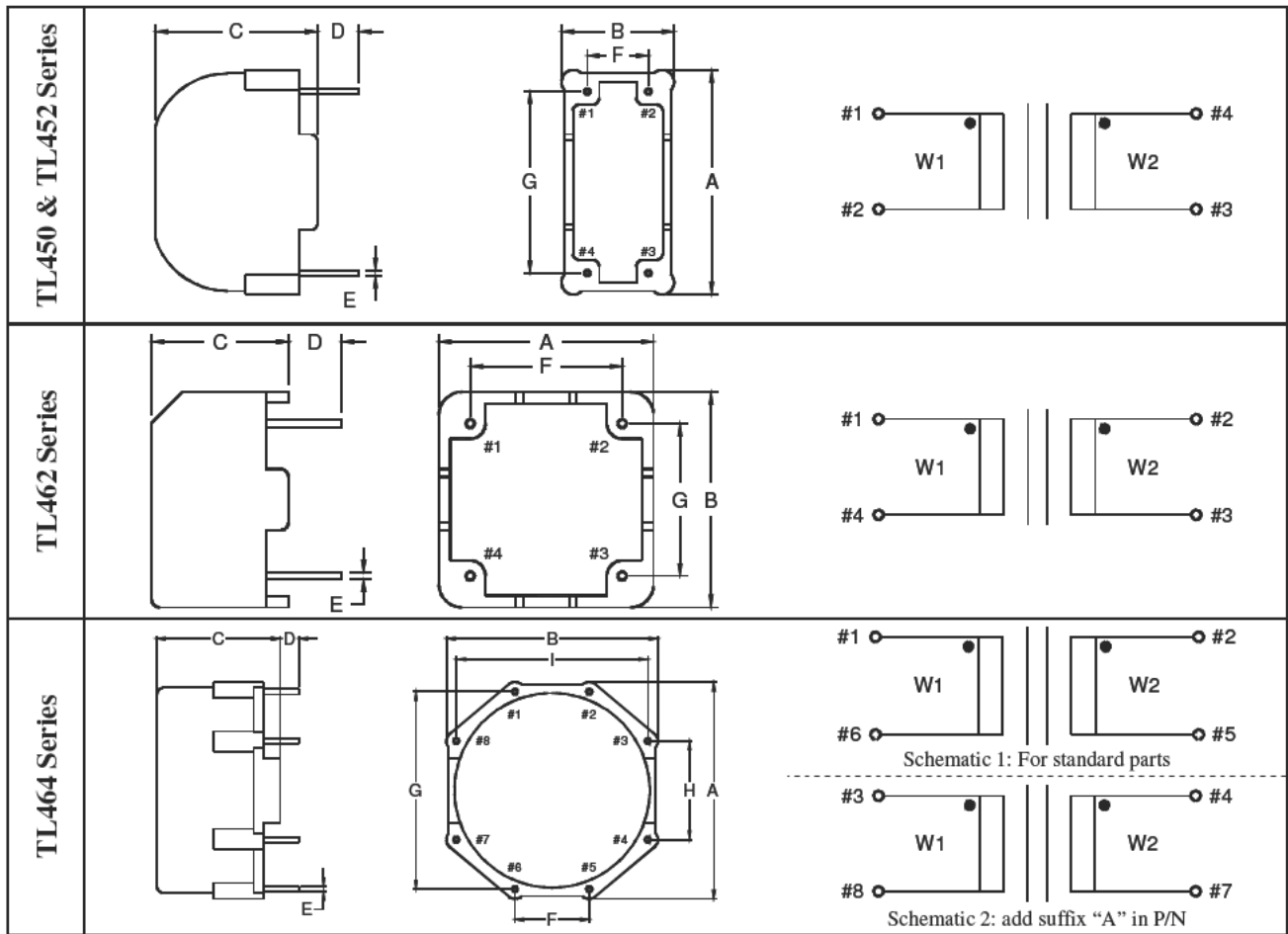


- Horizontal & Vertical Series
- Inductance range : 0.2 ~ 82mH
- Current range : 0.3 ~ 12A
- Dielectric strength : 2000Vrms
- Rated voltage : 250Vac
- Agency approval – VDE: EN 60938-2 (VDE 0565 Teil 2-1)



Product Series	Dimension (mm)								Weight (g)
	A	B	C	D	E	F	G	H	
TL21	18.0	12.4	20.0	5.0	10.0	5.0	3.5	Ø0.8	5
TL22	23.0	15.2	25.0	10.0	12.5	5.0	3.5	Ø0.8	13
TL23	27.0	18.0	29.0	12.5	15.0	5.0	3.5	Ø0.8	20
TL24	32.0	18.0	33.5	12.5	15.0	7.5	3.5	Ø0.8	27
TL25	32.0	20.6	36.0	12.5	17.5	7.5	3.5	Ø0.8	32
TL26	37.0	25.5	40.0	15.0	22.5	7.5	3.5	Ø0.8	37
TL27	43.0	28.2	45.0	25.0	25.0	7.5	3.5	Ø0.8	62
TL28	49.0	33.7	52.0	25.0	30.0	10.0	3.5	Ø1.0	110
TL29	63.6	44.0	59.0	25.0	40.0	10.0	3.5	Ø1.0	142
TL81	17.0	18.0	12.5	10.0	15.0	--	3.5	Ø0.8	5
TL82	22.5	24.0	15.5	12.5	20.0	--	3.5	Ø0.8	10
TL83	27.0	28.3	17.5	15.0	25.0	--	3.5	Ø0.8	17
TL84	32.0	33.2	19.5	20.0	30.0	--	3.5	Ø0.8	26
TL84A	32.0	33.2	25.0	20.0	30.0	--	3.5	Ø0.8	34
TL85	37.0	41.5	20.5	20.0	35.0	--	3.5	Ø0.8	40
TL86	42.0	42.0	28.0	25.0	35.0	--	3.5	Ø0.8	58
TL87	47.0	47.0	30.0	30.0	40.0	--	3.5	Ø1.0	87
TL88	52.0	52.0	40.0	35.0	45.0	--	3.5	Ø1.0	133
Tolerance	± 1.0	± 1.0	± 1.0	± 0.5	± 0.5	± 0.5	± 0.5	± 0.1	approx.

Note: Unused pins are omitted for standard parts. Unused pins can be provided on request.



Product Series	Dimension (mm)										Weight (g)
	A	B	C	D	E	F	G	H	I		
TL450	11.0	8.0	9.8	3.5	SQ0.5	5.0	8.75	--	--	1.2	
TL452	18.8	9.4	13.5	3.5	SQ0.5	5.1	15.2	--	--	3.4	
TL462	14.2	14.2	9.0	3.5	SQ0.5	10.0	10.0	--	--	3.2	
TL464	44.0	42.7	25.0	3.5	SQ1.0	15.0	40.0	20.0	38.75	53	
Tolerance	±1.0	±1.0	±1.0	±1.0	±0.1	±0.5	±0.5	±0.5	±0.5	approx.	

Note: Unused pins are omitted for standard parts. Unused pins can be provided on request.

Part Number	Inductance (mH)	Current (A)	Part Number	Inductance (mH)	Current (A)
TL450-005-402	2 x 4	0.5	TL81-003-473	2 x 47	0.3
TL450-009-202	2 x 2	0.9	TL81-003-393	2 x 39	0.3
TL450-020-501	2 x 0.5	2.0	TL81-004-393	2 x 39	0.4
TL452-003-123	2 x 12	0.3	TL81-004-273	2 x 27	0.4
TL452-006-442	2 x 4.4	0.6	TL81-004-203	2 x 20	0.4
TL452-010-302	2 x 3	1.0	TL81-005-273	2 x 27	0.5
TL452-015-162	2 x 1.6	1.5	TL81-005-153	2 x 15	0.5
TL452-020-112	2 x 1.1	2.0	TL81-006-153	2 x 15	0.6
TL462-003-123	2 x 12	0.3	TL81-006-332	2 x 3.3	0.6
TL462-006-442	2 x 4.4	0.6	TL81-006-102	2 x 1.0	0.6
TL462-010-302	2 x 3	1.0	TL81-007-103	2 x 10	0.7
TL462-015-162	2 x 1.6	1.5	TL81-008-103	2 x 10	0.8
TL462-020-112	2 x 1.1	2.0	TL81-012-682	2 x 6.8	1.2
			TL81-015-432	2 x 4.3	1.5
			TL81-015-332	2 x 3.3	1.5



ENCAPSULATED
COMMON MODE
FILTER

Part Number	Inductance (mH)	Current (A)	Part Number	Inductance (mH)	Current (A)
TL21-003-473 (#)	2 x 47	0.3	TL81-015-152	2 x 1.5	1.5
TL21-004-393 (#)	2 x 39	0.4	TL81-020-182	2 x 1.8	2.0
TL21-004-273 (#)	2 x 27	0.4	TL81-020-122	2 x 1.2	2.0
TL21-005-273 (#)	2 x 27	0.5	TL81-020-501	2 x 0.5	2.0
TL21-005-153 (#)	2 x 15	0.5	TL81-026-401	2 x 0.4	2.6
TL21-006-153 (#)	2 x 15	0.6	TL81-040-701	2 x 0.7	4.0
TL21-006-152 (#)	2 x 1.5	0.6			
TL21-007-103 (#)	2 x 10	0.7	TL82-003-473	2 x 47	0.3
TL21-008-103 (#)	2 x 10	0.8	TL82-005-473	2 x 47	0.5
TL21-012-682 (#)	2 x 6.8	1.2	TL82-005-393	2 x 39	0.5
TL21-012-301 (#)	2 x 0.3	1.2	TL82-008-273	2 x 27	0.8
TL21-015-432 (#)	2 x 4.3	1.5	TL82-008-153	2 x 15	0.8
TL21-015-332 (#)	2 x 3.3	1.5	TL82-010-153	2 x 15	1.0
TL21-015-201 (#)	2 x 0.2	1.5	TL82-012-103	2 x 10	1.2
TL21-020-182 (#)	2 x 1.8	2.0	TL82-015-682	2 x 6.8	1.5
TL21-020-122 (#)	2 x 1.2	2.0	TL82-020-103	2 x 10	2.0
TL21-026-401 (#)	2 x 0.4	2.6	TL82-020-422	2 x 4.2	2.0
TL21-040-701 (#)	2 x 0.7	4.0	TL82-025-332	2 x 3.3	2.5
			TL82-028-122	2 x 1.2	2.8
TL22-003-473	2 x 47	0.3	TL82-030-202	2 x 2	3.0
TL22-005-563	2 x 56	0.5	TL82-030-401	2 x 0.4	3.0
TL22-005-473	2 x 47	0.5	TL82-040-152	2 x 1.5	4.0
TL22-005-393	2 x 39	0.5			
TL22-008-273	2 x 27	0.8	TL83-005-503	2 x 50	0.5
TL22-008-153	2 x 15	0.8	TL83-006-473	2 x 47	0.6
TL22-010-153	2 x 15	1.0	TL83-006-403	2 x 40	0.6
TL22-010-103	2 x 10	1.0	TL83-006-393	2 x 39	0.6
TL22-010-902	2 x 9	1.0	TL83-006-103	2 x 10	0.6
TL22-012-103	2 x 10	1.2	TL83-006-102	2 x 1.0	0.6
TL22-015-682	2 x 6.8	1.5	TL83-008-473	2 x 47	0.8
TL22-015-362	2 x 3.6	1.5	TL83-008-393	2 x 39	0.8
TL22-020-422	2 x 4.2	2.0	TL83-009-393	2 x 39	0.9
TL22-025-332	2 x 3.3	2.5	TL83-010-503	2 x 50	1.0
TL22-028-122	2 x 1.2	2.8	TL83-010-473	2 x 47	1.0
TL22-030-362	2 x 3.6	3.0	TL83-010-393	2 x 39	1.0
TL22-030-202	2 x 2	3.0	TL83-010-303	2 x 30	1.0
TL22-030-401	2 x 0.4	3.0	TL83-010-273	2 x 27	1.0
TL22-040-152	2 x 1.5	4.0	TL83-010-183	2 x 18	1.0
			TL83-012-503	2 x 50	1.2
TL23-005-273	2 x 27	0.5	TL83-012-303	2 x 30	1.2
TL23-005-123	2 x 12	0.5	TL83-012-153	2 x 15	1.2
TL23-006-473	2 x 47	0.6	TL83-015-103	2 x 10	1.5
TL23-006-393	2 x 39	0.6	TL83-016-103	2 x 10	1.6
TL23-006-422	2 x 4.2	0.6	TL83-020-682	2 x 6.8	2.0
TL23-008-473	2 x 47	0.8	TL83-025-562	2 x 5.6	2.5
TL23-008-393	2 x 39	0.8	TL83-028-332	2 x 3.3	2.8
TL23-009-393	2 x 39	0.9	TL83-030-452	2 x 4.5	3.0
TL23-010-393	2 x 39	1.0	TL83-032-122	2 x 1.2	3.2
TL23-010-303	2 x 30	1.0	TL83-038-401	2 x 0.4	3.8
TL23-010-273	2 x 27	1.0	TL83-040-472	2 x 4.7	4.0
TL23-010-203	2 x 20	1.0	TL83-040-332	2 x 3.3	4.0
TL23-010-183	2 x 18	1.0			
TL23-010-103	2 x 10	1.0	TL84-005-823	2 x 82	0.5
TL23-012-503	2 x 50	1.2	TL84-008-493	2 x 49	0.8
TL23-012-393	2 x 39	1.2	TL84-010-393	2 x 39	1.0
TL23-012-153	2 x 15	1.2	TL84-010-333	2 x 33	1.0
TL23-015-183	2 x 18	1.5	TL84-012-503	2 x 50	1.2
TL23-015-103	2 x 10	1.5	TL84-013-493	2 x 49	1.3
TL23-016-103	2 x 10	1.6	TL84-013-473	2 x 47	1.3
TL23-020-682	2 x 6.8	2.0	TL84-014-393	2 x 39	1.4



ENCAPSULATED
COMMON MODE
FILTER

Part Number	Inductance (mH)	Current (A)	Part Number	Inductance (mH)	Current (A)
TL23-025-562	2 x 5.6	2.5	TL84-014-273	2 x 27	1.4
TL23-028-332	2 x 3.3	2.8	TL84-015-473	2 x 47	1.5
TL23-030-452	2 x 4.5	3.0	TL84-015-273	2 x 27	1.5
TL23-032-122	2 x 1.2	3.2	TL84-016-183	2 x 18	1.6
TL23-038-401	2 x 0.4	3.8	TL84-018-333	2 x 33	1.8
TL23-040-332	2 x 3.3	4.0	TL84-018-183	2 x 18	1.8
			TL84-018-153	2 x 15	1.8
TL24-005-823	2 x 82	0.5	TL84-020-183	2 x 18	2.0
TL24-008-493	2 x 49	0.8	TL84-020-153	2 x 15	2.0
TL24-010-393	2 x 39	1.0	TL84-020-103	2 x 10	2.0
TL24-010-333	2 x 33	1.0	TL84-020-682	2 x 6.8	2.0
TL24-012-503	2 x 50	1.2	TL84-025-103	2 x 10	2.5
TL24-012-393	2 x 39	1.2	TL84-025-682	2 x 6.8	2.5
TL24-013-493	2 x 49	1.3	TL84-030-682	2 x 6.8	3.0
TL24-013-473	2 x 47	1.3	TL84-030-332	2 x 3.3	3.0
TL24-014-393	2 x 39	1.4	TL84-035-392	2 x 3.9	3.5
TL24-014-273	2 x 27	1.4	TL84-040-332	2 x 3.3	4.0
TL24-015-273	2 x 27	1.5	TL84-040-122	2 x 1.2	4.0
TL24-016-183	2 x 18	1.6	TL84-045-401	2 x 0.4	4.5
TL24-018-153	2 x 15	1.8	TL84-050-182	2 x 1.8	5.0
TL24-020-253	2 x 25	2.0	TL84-060-202	2 x 2	6.0
TL24-020-103	2 x 10	2.0	TL84-060-122	2 x 1.2	6.0
TL24-020-682	2 x 6.8	2.0	TL84-070-401	2 x 0.4	7.0
TL24-025-233	2 x 23	2.5			
TL24-025-682	2 x 6.8	2.5	TL84A-016-473	2 x 47	1.6
TL24-030-332	2 x 3.3	3.0	TL84A-018-393	2 x 39	1.8
TL24-040-332	2 x 3.3	4.0	TL84A-020-273	2 x 27	2.0
TL24-040-122	2 x 1.2	4.0	TL84A-025-153	2 x 15	2.5
TL24-045-401	2 x 0.4	4.5	TL84A-025-103	2 x 10	2.5
TL24-060-202	2 x 2	6.0	TL84A-035-682	2 x 6.8	3.5
TL24-060-122	2 x 1.2	6.0	TL84A-040-702	2 x 7	4.0
			TL84A-040-392	2 x 3.9	4.0
TL25-015-473	2 x 47	1.5	TL84A-060-332	2 x 3.3	6.0
TL25-018-183	2 x 18	1.8	TL84A-060-182	2 x 1.8	6.0
TL25-020-153	2 x 15	2.0			
TL25-025-103	2 x 10	2.5	TL85-017-393	2 x 39	1.7
TL25-030-682	2 x 6.8	3.0	TL85-018-273	2 x 27	1.8
TL25-035-392	2 x 3.9	3.5	TL85-020-273	2 x 27	2.0
TL25-040-802	2 x 8.0	4.0	TL85-020-183	2 x 18	2.0
TL25-040-332	2 x 3.3	4.0	TL85-030-103	2 x 10	3.0
TL25-050-802	2 x 8.0	5.0	TL85-040-682	2 x 6.8	4.0
TL25-050-682	2 x 6.8	5.0	TL85-060-392	2 x 3.9	6.0
TL25-050-182	2 x 1.8	5.0	TL85-080-272	2 x 2.7	8.0
TL25-060-122	2 x 1.2	6.0	TL85-080-132	2 x 1.3	8.0
TL25-070-401	2 x 0.4	7.0	TL85-100-182	2 x 1.8	10.0
TL26-060-272	2 x 2.7	6.0	TL86-080-182	2 x 1.8	8
TL27-080-182	2 x 1.8	8.0	TL87-100-122	2 x 1.2	10
TL28-100-122	2 x 1.2	10	TL88-120-102	2 x 1.0	12
TL29-120-102	2 x 1.0	12	TL464-010-683 (#)	2 x 68	1
			TL464-020-183 (#)	2 x 18	2
			TL464-040-682 (#)	2 x 6.8	4
			TL464-060-392 (#)	2 x 3.9	6
			TL464-080-272 (#)	2 x 2.7	8
			TL464-100-182 (#)	2 x 1.8	10

Note: (#) Items with suffix "A" are available (e.g. TL21-003-473A)