

Circular Connector

MIL-C-5015 Connector Series

SM C10 MIL-MS type connector

SM C10 MIL MS series circular connectors are used extensively in line connections between electrical equipment, various instruments and meters. These connectors meet the standard MIL C 5015, have the features of light weight, aluminium alloy material, wide range, threaded coupling, good sealing performance, resistance against corrosion, high conductivity and high dielectric strength. It's the ideal product to replace the MIL C 5015 series of Amphenol.

Material and surface treatment:

Shell : Aluminum alloy, Dark green plating

Insulator : PPS

Contact body : Copper alloy, Silver plated

Service environmental condition

Insulation resistance: 5000MΩ Min.

Ambient temperature: 55°C~+125°C

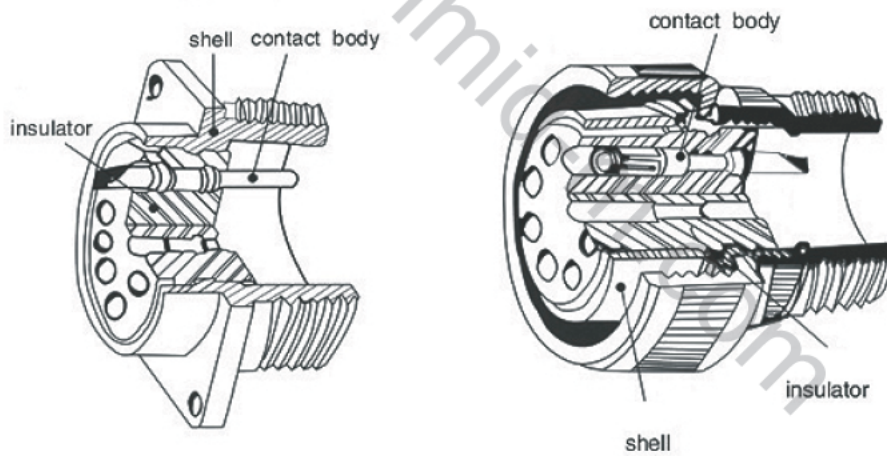
Life : 500 cycles Min.

With standing voltage: 2KV

Operating voltage: AC500V /DC700V

Rated current:

Contact size	Rated current(A)	Jointing of diameter(mm)	Wire size A W G	Max	Average	Min
				kg		
16 #	13	φ 2.0	22 # -16 #	1.36	0.95	0.11
12 #	23	φ 3.0	14 # -12 #	2.26	1.58	0.22
8 #	46	φ 5.2	10 # -8 #	4.53	3.17	0.34
4 #	80	φ 8.5	6 # -4 #	6.8	4.76	0.45
0 #	150	φ 12.0	2 # -0 #	9.97	6.35	0.9



ORDER INFORMATION

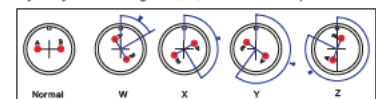
Product NO.: SM C10 MIL-MS 3106A-20-27-JW

MIL-C-5015 standard connector

Connector type code



Key ways exchange: W, X, Y or Z insert positions



Type of contact: K-socket J-pin

Hole group row code number

Type: mounting diameter of receptacle : 8, 10, 12, 14, 16, 18, 20, 22, 24, 28, 32, 36, 40, 44, 48

Rank: A-Whole cannula B-Bifid cannula

Circular Connector

MIL-C-5015 Connector Series

Insert arrangement. From the direction of pin inserting



Insert arrangement	10S 2	10SL 3	10SL 4	12S 3	12S 4	12 S 5
Service rating	A	A	A	A	D	D
Number of contacts	1	3	2	2	1	1
Contact size	16	16	16	16	16	12

Insert arrangement	14S 2	14S 5	14S 6	14S 7	14S 9	14S 3
Service rating				A	A	A
Number of contacts	4	5	6	3	2	1
Contact size	16	16	16	16	16	8

Insert arrangement	16S 1	16S 3	16S 4	16S 5	16S 6	16S 8
Service rating	A	B	D	A	A	A
Number of contacts	7	1	2	3	3	5
Contact size	16	16	16	16	16	16

Insert arrangement	16 2	16 7	16 9	16 10	16 11	16 12
Service rating	E	A	A	A	A	A
Number of contacts	1	2	2	3	2	1
Contact size	12	16	16	12	12	12

Insert arrangement	16 13					
Service rating	A					
Number of contacts	2					
Contact size	12					

Insert arrangement	18 1	18 3	18 4	18 5	18 6	18 7
Service rating		D	D	D	D	B
Number of contacts	10	2	4	1	2	1
Contact size	16	12	16	16	12	4

Insert arrangement	18 8	18 9	18 10	18 11	18 12	18 13
Service rating	A		D	A	A	A
Number of contacts	7	1	5	2	4	5
Contact size	16	12	16	12	12	16

Insert arrangement	18 14	18 15	18 16	18 22		
Service rating	A	A	C	D		
Number of contacts	1	1	4	1	3	
Contact size	4	16	12	12	16	

Insert arrangement	20 2	20 3	20 4	20 7	20 8	20 9
Service rating	D	D	D			
Number of contacts	1	3	4	8	4	2
Contact size	0	12	12	16	16	8

Insert arrangement	20 14	20 15	20 16	20 17	20 18	20 19
Service rating	A	A	A	A	A	A
Number of contacts	3	2	7	2	1	5
Contact size	12	8	12	16	12	16

Insert arrangement	20 20	20 21	20 22	20 23	20 24	20 27
Service rating	A	A	A	A	A	A
Number of contacts	3	1	8	1	3	3
Contact size	12	4	16	12	16	8

Insert arrangement	20 29	20 33				
Service rating	A	A				
Number of contacts	17	11				
Contact size	16	16				

Insert arrangement	22 2	22 4	22 5	22 6	22 7	22 9
Service rating	D	A	D	D	E	E
Number of contacts	3	4	4	2	1	2
Contact size	8	16	16	12	16	8

Insert arrangement	22 10	22 11	22 12	22 13	22 14	22 15
Service rating	E	B	D	A	A	A
Number of contacts	4	2	3	2	1	4
Contact size	16	16	16	8	16	12

Insert arrangement	22 17	22 18	22 19	22 20	22 21	22 22
Service rating	A	A	A	A	A	A
Number of contacts	8	1	8	14	9	2
Contact size	16	12	16	16	16	10

Insert arrangement	22 23	22 27	22 28	22 36		
Service rating			D			
Number of contacts	8	8	1	7	8	
Contact size	2	16	8	12	12	

Insert arrangement	24 2	24 4	24 5	24 6	24 7	24 10
Service rating	D	D	A	A	A	A
Number of contacts	7	3	1	16	8	14
Contact size	12	16	0	16	12	16

Insert arrangement	24 11	24 12	24 16	24 20	24 21	24 22
Service rating	A	A	A	D	D	D
Number of contacts	6	3	3	3	1	9
Contact size	12	8	12	4	16	12

Insert arrangement	24 27	24 28	24 80			
Service rating	E					
Number of contacts	7	24	23			
Contact size	16	16	16			

Insert arrangement	28 1	28 2	28 3	28 4	28 5	28 7
Service rating	A	D	E	D	D	A
Number of contacts	6	3	12	2	3	7
Contact size	12	8	16	12	16	12

Circular Connector

MIL-C-5015 Connector Series

Insert arrangement. From the direction of pin inserting

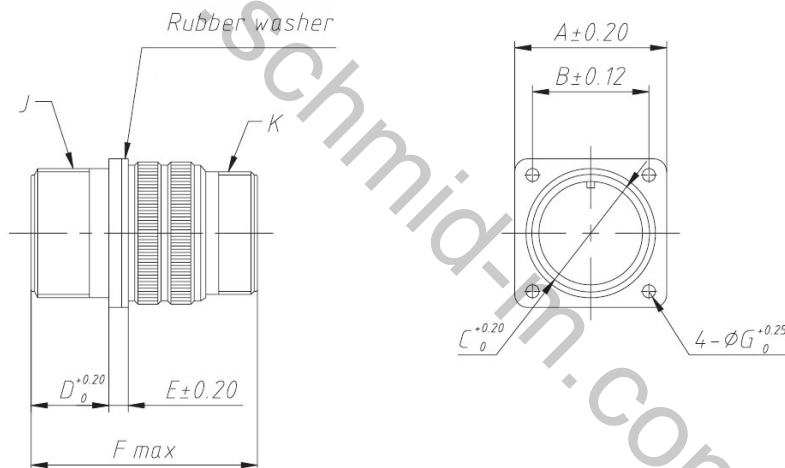
CONTACT LEGEND	⊕	⊖	⊙	○	⊗
	16	12	8	4	0

Insert arrangement	28 8	28 9	28 10	28 11	28 12	28 15
Service rating	A	D	A	A	A	A
Number of contacts	10 2	6 6	3 2 2	18 4	26	35
Contact size	16 12	16 12	12 8 4	16 12	16	16

Insert arrangement	28 16	28 17	28 18	28 19	28 20	28 21
Service rating	A	A	D	A	A	A
Number of contacts	20	15	12	6 4	4 10	37
Contact size	16	16	16	16 12	16 12	16

Insert arrangement	28 22					
Service rating	D					
Number of contacts	3 3					
Contact size	16 4					

MS3100

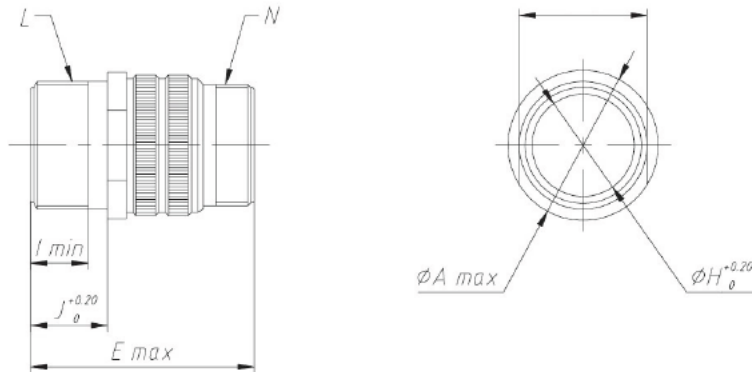


Shell size	□A	□B	∅C	D	E	F	∅G	J	K
10S	25.40	18.26	11.6	14.3	3.00	38.88	3.05	5/8-24 UNEF-2A	1/2-28 UNEF-2A
10SL	25.40	18.26	11.6	14.3	3.00	38.88	3.05	5/8-24 UNEF-2A	5/8-24 UNEF-2A
12S	27.79	20.62	14.4	14.3	3.00	42.87	3.05	3/4-20 UNEF-2A	5/8-24 UNEF-2A
12	27.79	20.62	14.4	19.05	3.00	52.37	3.05	3/4-20 UNEF-2A	5/8-24 UNEF-2A
14S	30.18	23.01	17.45	14.3	3.00	42.87	3.05	7/8-20 UNEF-2A	3/4-20 UNEF-2A
14	30.18	23.01	17.45	19.05	3.00	52.37	3.05	7/8-20 UNEF-2A	3/4-20 UNEF-2A
16S	32.54	24.61	20.75	14.3	3.00	42.87	3.05	1-20 UNEF-2A	7/8-20 UNEF-2A
16	32.54	24.61	20.75	19.05	3.00	52.37	3.05	1-20 UNEF-2A	7/8-20 UNEF-2A
18	34.93	26.97	23.9	19.05	4.00	52.37	3.05	11/8-18 UNEF-2A	1-20 UNEF-2A
20	38.10	29.36	26.95	19.05	4.00	55.57	3.05	11/4-18 UNEF-2A	13/16-18 UNEF-2A
22	41.28	31.75	30.15	19.05	4.00	55.57	3.05	13/8-18 UNEF-2A	13/16-18 UNEF-2A
24	44.45	34.93	33.3	20.63	4.00	58.72	3.73	11/2-18 UNEF-2A	17/16-18 UNEF-2A
28	50.80	39.67	38.9	2.63	4.00	58.72	3.73	13/4-18 UNEF-2A	17/16-18 UNEF-2A

Circular Connector

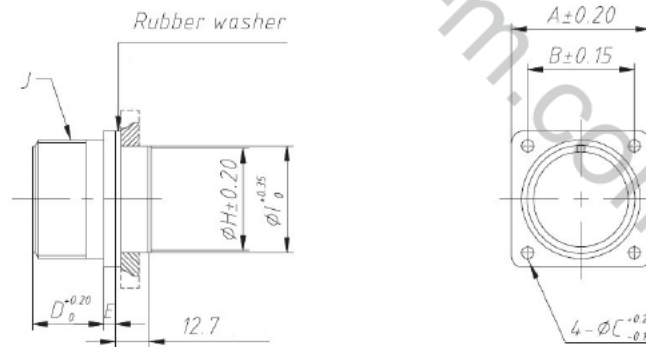
MIL-C-5015 Connector Series

MS3101



Shell size	A	E	φH	I	J	J		N	
						Scerw thread	Scerw thread		
10S	24.61	38.88	11.6	9.53	14.3	5/8 24 UNEF 2A	1/2 28 UNEF 2A		
10SL	24.61	38.88	11.6	9.53	14.3	5/8 24 UNEF 2A	5/8 24 UNEF 2A		
12S	26.97	42.87	14.4	9.53	14.3	3/4 20 UNEF 2A	5/8 24 UNEF 2A		
12	26.97	52.37	14.4	15.88	19.05	3/4 20 UNEF 2A	5/8 24 UNEF 2A		
14S	29.36	42.87	17.45	9.53	14.3	7/8 20 UNEF 2A	3/4 20 UNEF 2A		
14	29.36	52.37	17.45	15.88	19.05	7/8 20 UNEF 2A	3/4 20 UNEF 2A		
16S	31.75	42.87	20.75	9.53	14.3	1 20 UNEF 2A	7/8 20 UNEF 2A		
16	31.75	52.37	20.75	15.88	19.05	1 20 UNEF 2A	7/8 20 UNEF 2A		
18	34.13	52.37	23.9	15.88	19.05	1 1/8 UNEF 2A	1 20 UNEF 2A		
20	37.31	55.57	26.95	15.88	19.05	1 1/4 18 UNEF 2A	1 3/16 18 UNEF 2A		
22	40.48	55.57	30.15	15.88	19.05	1 3/8 18 UNEF 2A	1 3/16 18 UNEF 2A		
24	43.66	58.72	33.3	15.88	20.63	1 1/2 18 UNEF 2A	1 7/16 18 UNEF 2A		
28	50.01	58.72	38.9	15.88	20.63	1 3/4 18 UNEF 2A	1 7/16 18 UNEF 2A		

MS3102

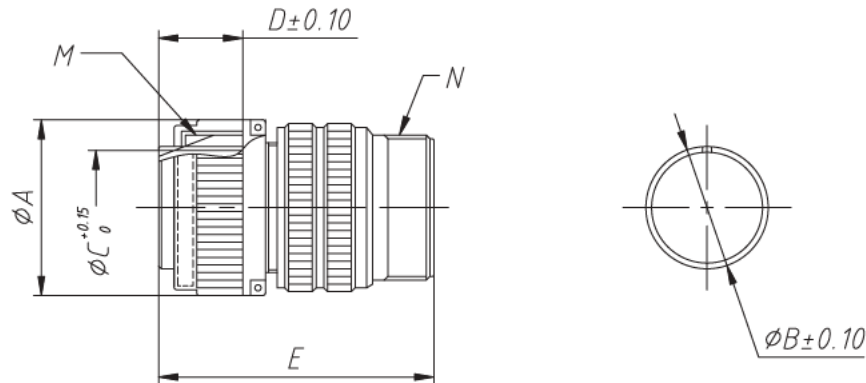


Shell size	A	B	φC	D	E	φH	φI	φH	φI	J
						(HMS3102)	(HMS3102)	(HMS3102E)	(HMS3102E)	Scerw thread
10S	25.40	18.26	3.05	14.28	3.00	16.66	17.47	14	14.8	5/8 24 UNEF 2A
10SL	25.40	18.26	3.05	14.28	3.00	16.66	17.47	16	16.8	5/8 24 UNEF 2A
12S	27.80	20.62	3.05	14.28	3.00	19.35	20.62	17	17.8	3/4 20 UNEF 2A
12	27.80	20.62	3.05	19.05	3.00	19.35	20.62	17	17.8	3/4 20 UNEF 2A
14S	30.20	23.01	3.05	14.28	3.00	23.01	23.83	21	21.8	7/8 20 UNEF 2A
14	30.20	23.01	3.05	19.05	3.00	23.01	23.83	21	21.8	7/8 20 UNEF 2A
16S	32.50	24.61	3.05	14.28	3.00	26.21	26.97	24	24.8	1 20 UNEF 2A
16	32.50	24.61	3.05	19.05	3.00	26.21	26.97	24	24.8	1 20 UNEF 2A
18	34.90	26.97	3.05	19.05	4.00	29.36	30.18	25	26	1 1/8 18 UNEF 2A
20	38.10	29.36	3.05	19.05	4.00	32.56	33.32	29.3	30	1 1/4 18 UNEF 2A
22	41.30	31.75	3.05	19.05	4.00	35.71	36.53	32.1	33	1 3/8 18 UNEF 2A
24	44.50	34.93	3.73	20.63	4.00	38.91	39.67	37	37.8	1 1/2 18 UNEF 2A
28	50.80	39.67	3.73	20.63	4.00	45.26	46.02	43	43.8	1 3/4 18 UNEF 2A

Circular Connector

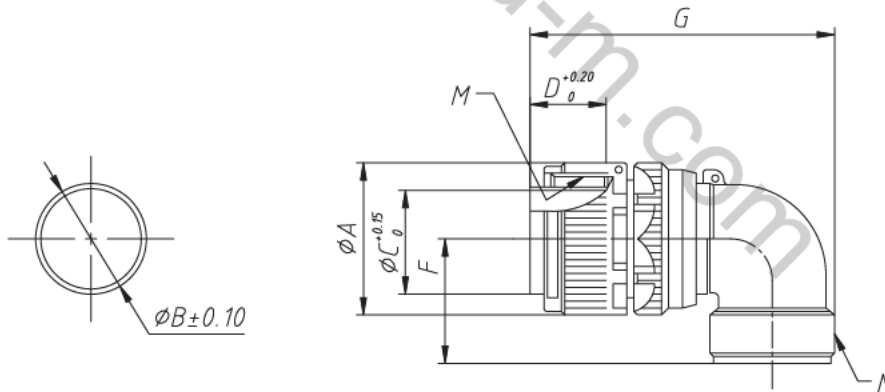
MIL-C-5015 Connector Series

MS3106



Shell size	ϕA	ϕB	ϕC	D	E	M		N	
						Scerw thread		Scerw thread	
8S	21.43	9.3	6.41	13.49	37.3	1/2 28 UNEF 2B		1/2 28 UNEF 2A	
10S	24.61	11.17	8.21	13.49	38.88	5/8 24 UNEF 2B		1/2 28 UNEF 2A	
10SL	24.61	11.33	9.6	13.49	38.88	5/8 24 UNEF 2B		5/8 24 UNEF 2A	
12S	26.97	14.10	11.43	13.49	42.87	3/4 20 UNEF 2B		5/8 24 UNEF 2A	
12	26.97	14.10	11.43	18.26	52.37	3/4 20 UNEF 2B		5/8 24 UNEF 2A	
14S	29.36	17.15	13.37	13.49	42.87	7/8 20 UNEF 2B		3/4 20 UNEF 2A	
14	29.36	17.15	13.37	18.26	52.37	7/8 20 UNEF 2B		3/4 20 UNEF 2A	
16S	31.75	20.45	16.54	13.49	42.87	1 20 UNEF 2B		7/8 20 UNEF 2A	
16	31.75	20.45	16.54	18.2	52.37	1 20 UNEF 2B		7/8 20 UNEF 2A	
18	34.13	23.62	19.72	18.26	52.37	1 1/8 18 UNEF 2B		1 20 UNEF 2A	
20	37.31	26.67	23.68	18.26	55.57	1 1/4 18 UNEF 2B		13/16 18 UNEF 2A	
22	40.48	29.85	26.07	18.26	55.57	1 3/8 18 UNEF 2B		13/16 18 UNEF 2A	
24	43.66	33.02	29.24	18.26	58.72	1 1/2 18 UNEF 2B		17/16 18 UNEF 2A	
28	50.01	38.61	34.80	18.26	58.72	1 3/4 18 UNEF 2B		17/16 18 UNEF 2A	

MS3108



Shell size	ϕA	ϕB	ϕC	D	E	M		N	
						Scerw thread		Scerw thread	
8S	21.43	9.3	6.41	13.49	37.3	1/2-28 UNEF-2B		1/2-28 UNEF-2A	
10S	24.61	11.17	8.21	13.49	38.88	5/8-24 UNEF-2B		1/2-28 UNEF-2A	
10SL	24.61	11.33	9.6	13.49	38.88	5/8-24 UNEF-2B		5/8-24 UNEF-2A	
12S	26.97	14.10	11.43	13.49	42.87	3/4-20 UNEF-2B		5/8-24 UNEF-2A	
12	26.97	14.10	11.43	18.26	52.37	3/4-20 UNEF-2B		5/8-24 UNEF-2A	
14S	29.36	17.15	13.37	13.49	42.87	7/8-20 UNEF-2B		3/4-20 UNEF-2A	
14	29.36	17.15	13.37	18.26	52.37	7/8-20 UNEF-2B		3/4-20 UNEF-2A	
16S	31.75	20.45	16.54	13.49	42.87	1-20 UNEF-2B		7/8-20 UNEF-2A	
16	31.75	20.45	16.54	18.26	52.37	1-20 UNEF-2B		7/8-20 UNEF-2A	
18	34.13	23.62	19.72	18.26	52.37	1 1/8-18 UNEF-2B		1-20 UNEF-2A	
20	37.31	26.67	23.68	18.26	55.57	1 1/4-18 UNEF-2B		13/16-18 UNEF-2A	
22	40.48	29.85	26.07	18.26	55.57	1 3/8-18 UNEF-2B		13/16-18 UNEF-2A	
24	43.66	33.02	29.24	18.26	58.72	1 1/2-18 UNEF-2B		17/16-18 UNEF-2A	
28	50.01	38.61	34.80	18.26	58.72	1 3/4-18 UNEF-2B		17/16-18 UNEF-2A	