

40W isolated DC-DC converter in 1x1 inch
Ultra-wide input and regulated single output



Patent Protection
 CE Report EN62368-1
 UK Report BS EN62368-1
 RoHS

FEATURES

- Ultra-Wide 4:1 input voltage range
- High efficiency up to 91.5%
- No-load power consumption as low as 0.096W
- I/O isolation test voltage 1.5k VDC
- Input under-voltage protection, output short-circuit, over-current, over-voltage, over-temperature protection
- Operating ambient temperature range: -40°C to +105°C
- Industry standard pin-out
- Meets EN62368 standards

SURB_YMD-40WR3 series of isolated 40W DC-DC converter products with an ultra-wide 4:1 input voltage range. They feature efficiencies up to 91.5%, input to output isolation is tested with 1500VDC and the converter safety operate ambient temperature of -40°C to +105°C, input under-voltage protection, output short-circuit, over-current, over-voltage and over-temperature protection. They are ideally and widely used in applications such as industrial control, electric power, instruments and communications.

Selection Guide

Certification	Part No.	Input Voltage (VDC)		Output		Full Load Efficiency [®] (%) Min./Typ.	Capacitive Load (µF)Max.
		Nominal (Range)	Max. ^①	Voltage (VDC)	Current(mA) Max./Min.		
EN/BS EN	SURB2403YMD-40WR3	24 (9-36)	40	3.3	10000/0	87/89.5	7200
	SURB2405YMD-40WR3			5	8000/0	88/90	7200
	SURB2412YMD-40WR3			12	3333/0	89/91.2	2000
	SURB2415YMD-40WR3			15	2667/0	89/91.5	1500
	SURB2424YMD-40WR3			24	1667/0	88/90.1	1000
	SURB2428YMD-40WR3			28	1429/0	88/90.1	1000
--	SURB4803YMD-40WR3	48 (18-75)	75	3.3	10000/0	87/89	7200
	SURB4805YMD-40WR3			5	8000/0	88/90	7200
	SURB4812YMD-40WR3			12	3333/0	89/91	2000
	SURB4815YMD-40WR3			15	2667/0	89/91	1500

Notes:

- ① Exceeding the maximum input voltage may cause permanent damage;
- ② Efficiency is measured in nominal input voltage and rated output load;
- ③ Rated output load is derated to 75% at minimum input voltage.

Input Specifications

Item	Operating Conditions	Min.	Typ.	Max.	Unit	
Input Current (full load / no-load)	24VDC nominal input series, nominal input voltage	3.3V output	--	1545/4	1580/12	mA
		Others	--	1852/4	1894/12	
	48VDC nominal input series, nominal input voltage	3.3V output	--	772/7	790/15	
		Others	--	926/7	947/15	
Reflected Ripple Current	nominal input series	--	100	--		
Surge Voltage (1sec. max.)	24VDC nominal input series	-0.7	--	50	VDC	
	48VDC nominal input series	-0.7	--	100		
Start-up Voltage	24VDC nominal input series	--	--	9		
	48VDC nominal input series	--	--	18		
Input under-voltage protection	24VDC nominal input series	5.5	7.5	--		
	48VDC nominal input series	12	15	--		

DC/DC Converter

SURB_YMD-40WR3 Series

Start-up Time	Nominal input voltage & constant resistance load	--	30	100	ms
Input Filter		Capacitance filter			
Hot Plug		Unavailable			
Ctrl*	Module on	Ctrl pin open or pulled high (TTL 3.5-12VDC)			
	Module off	Ctrl pin pulled low to GND (0-1.2VDC)			
	Input current when off	--	6	12	mA

Note: *The Ctrl pin voltage is referenced to input GND.

Output Specifications

Item	Operating Conditions	Min.	Typ.	Max.	Unit
Voltage Accuracy ^①	5%-100% load	--	±1	±3	%
Linear Regulation	Input voltage variation from low to high at full load	--	±0.2	±0.5	
Load Regulation ^②	5%-100% load	--	±0.5	±1	
Transient Recovery Time	25% load step change, nominal input voltage	--	250	500	μs
Transient Response Deviation	25% load step change, input voltage range	--	±5	±8	%
Temperature Coefficient	Full load	--	--	±0.03	%/°C
Ripple & Noise ^③	20MHz bandwidth, nominal input voltage, 5%-100% load	--	100	150	mV p-p
Trim	Input voltage range	90	--	110	%Vo
Over-temperature Protection	Max. Case Temperature	--	125	--	°C
Over-voltage Protection	Input voltage range	110	140	160	%Vo
Over-current Protection		110	140	200	%Io
Short circuit Protection		Hiccup, continuous, self-recovery			

Note:
 ① Output voltage accuracy for 0%-5% load is ±5% max;
 ② Load regulation for 0% -100% load increases to ±3%;
 ③ Under 0% -5% load conditions, ripple & noise does not exceed 5%Vo. The "parallel cable" method is used for ripple and noise test, please refer to DC-DC Converter Application Notes for specific information.

General Specifications

Item	Operating Conditions	Min.	Typ.	Max.	Unit
Isolation	Input-output Electric Strength Test for 1 minute with a leakage current of 1mA max.	1500	--	--	VDC
Insulation Resistance	Input-output resistance at 500VDC	1000	--	--	MΩ
Isolation Capacitance	Input-output capacitance at 100kHz/0.1V	24VDC input series	--	10	nF
		48VDC input series	--	2.2	
Operating Temperature	See Fig. 1	-40	--	+105	°C
Max. Case Temperature	Rated output load	--	110	--	
Storage Temperature		-55	--	+125	
Storage Humidity	Non-condensing	5	--	95	%RH
Pin Soldering Resistance Temperature	Soldering spot is 1.5mm away from case for 10 seconds	--	--	+300	°C
Vibration		10-150Hz, 5G, 0.75mm. along X, Y and Z			
Switching Frequency *	PWM mode	--	400	--	kHz
MTBF	MIL-HDBK-217F@25°C	1000	--	--	k hours

Note: *Switching frequency is measured at full load. The module reduces the switching frequency for light load (below 50%) efficiency improvement.

Mechanical Specifications

Case Material	Aluminum alloy
Dimensions	25.40 × 25.40 × 11.70 mm
Weight	20.0g(Typ.)
Cooling method	Free air convection

DC/DC Converter

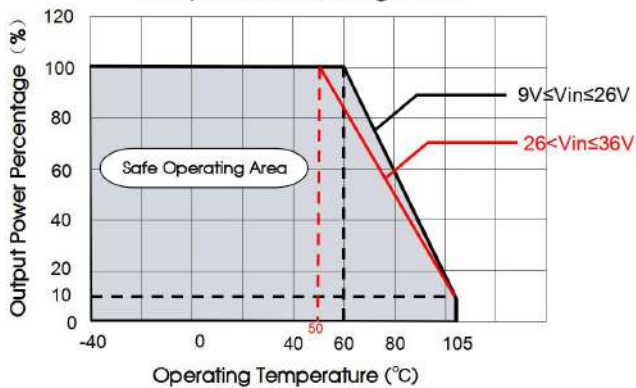
SURB_YMD-40WR3 Series

Electromagnetic Compatibility (EMC)

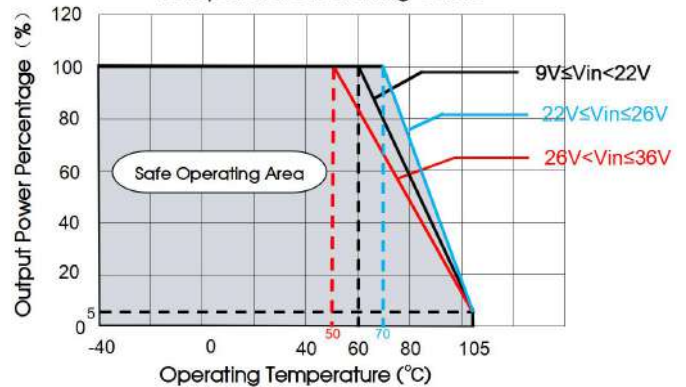
Emissions	CE	CISPR32/EN55032	CLASS B (see Fig.3-② for recommended circuit)	
	RE	CISPR32/EN55032	CLASS B (see Fig.3-② for recommended circuit)	
Immunity	ESD	IEC/EN61000-4-2	Contact $\pm 6\text{kV}$	perf. Criteria B
	RS	IEC/EN61000-4-3	10V/m	perf. Criteria A
	EFT	IEC/EN61000-4-4	$\pm 2\text{kV}$ (see Fig.3-① for recommended circuit)	perf. Criteria A
	Surge	IEC/EN61000-4-5	line to line $\pm 2\text{kV}$ (see Fig.3-① for recommended circuit)	perf. Criteria A
	CS	IEC/EN61000-4-6	3 V.r.m.s	perf. Criteria A

Typical Characteristic Curves

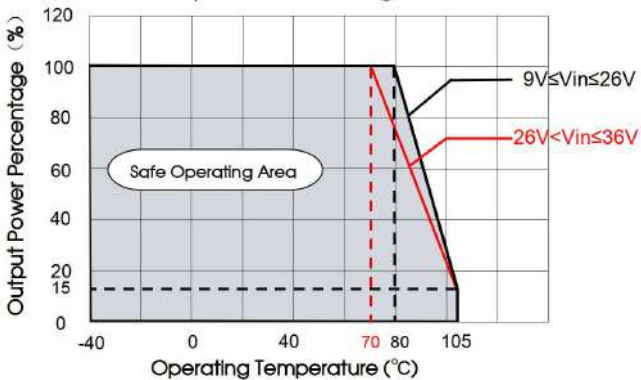
SURB2403YMD-40WR3
Temperature Derating Curve



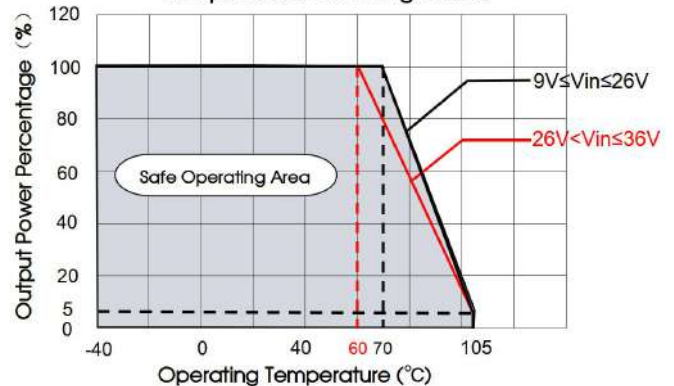
SURB2405YMD-40WR3
Temperature Derating Curve



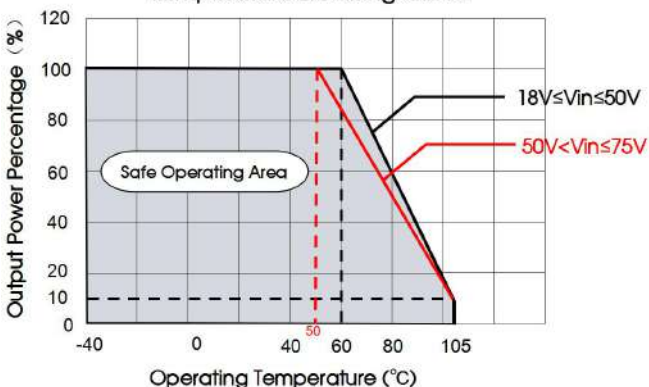
SURB2412/15YMD-40WR3
Temperature Derating Curve



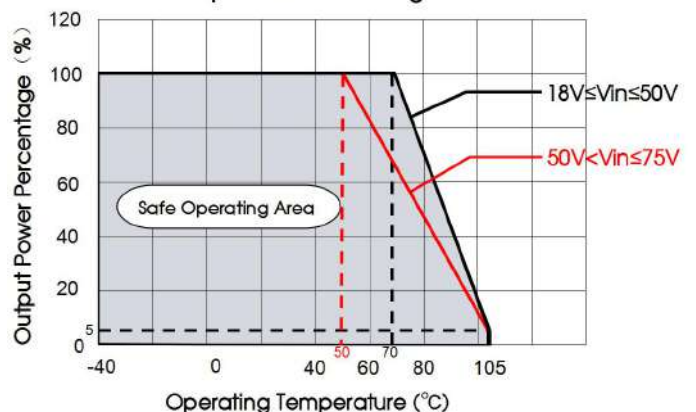
SURB2424/28YMD-40WR3
Temperature Derating Curve



SURB4803YMD-40WR3
Temperature Derating Curve



SURB4805YMD-40WR3
Temperature Derating Curve



DC/DC Converter

SURB_YMD-40WR3 Series

SURB4812/15YMD-40WR3
Temperature Derating Curve

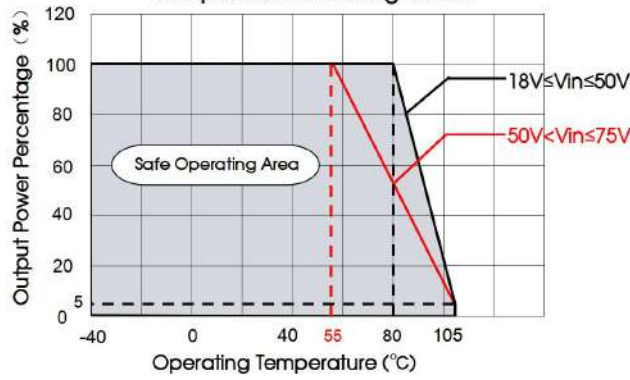
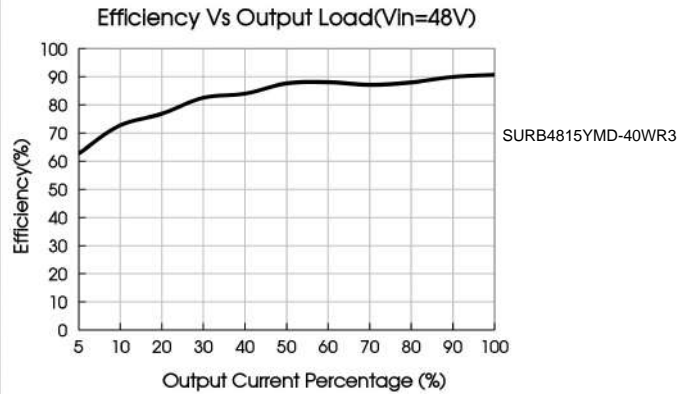
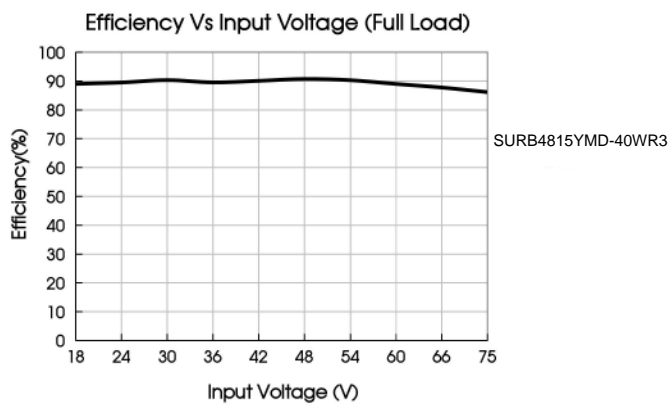
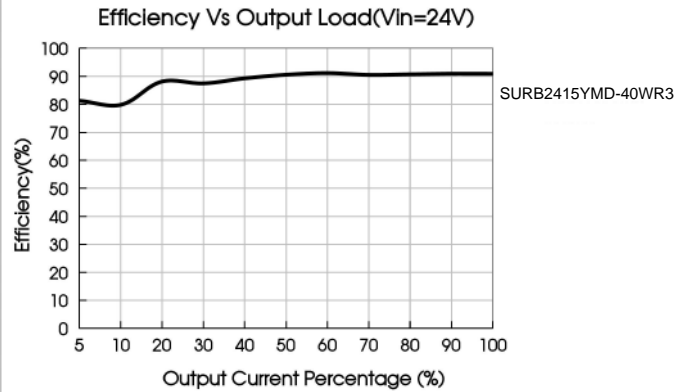
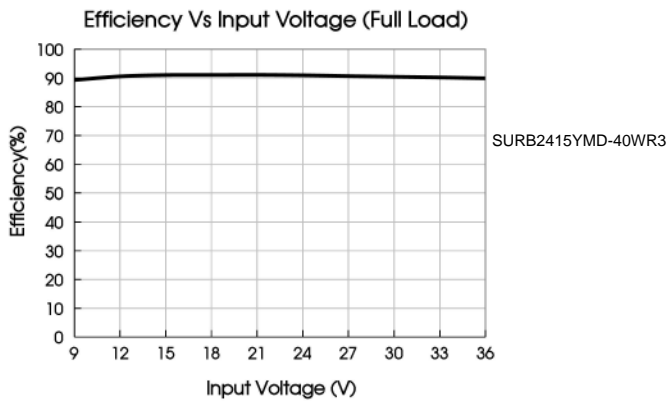
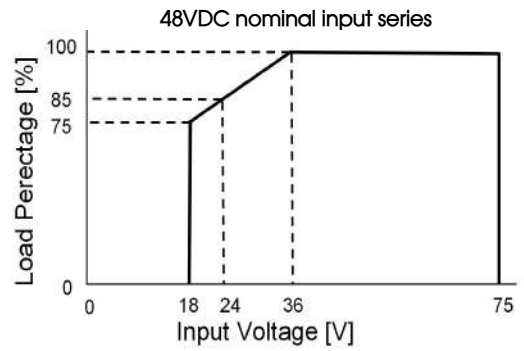
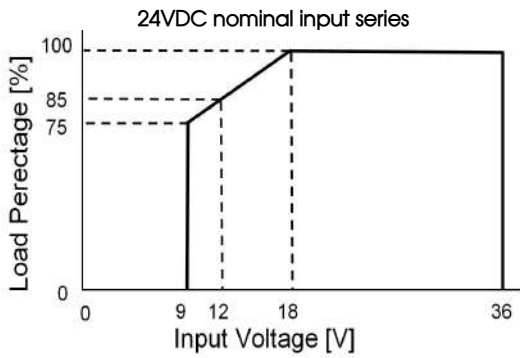


Fig. 1



DC/DC Converter

SURB_YMD-40WR3 Series

Design Reference

1. Typical application

All DC-DC converters of this series are tested before delivery using the recommended circuit shown in Fig. 2.

Input and/or output ripple can be further reduced by appropriately increasing the input & output capacitor values C_{in} and C_{out} and/or by selecting capacitors with a low ESR (equivalent series resistance). Also make sure that the capacitance is not exceeding the specified max. capacitive load value of the product.

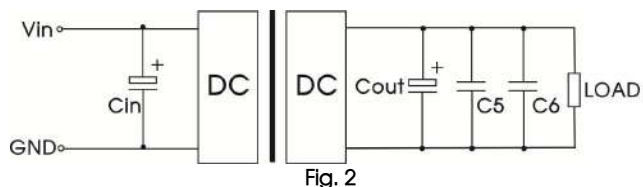


Fig. 2

Vin (VDC)	Vout (VDC)	Cin	Cout	C5	C6	C7
24	3.3-5	100uF /50V	470uF /50V	10uF/ 16V		/
	12/15			10uF/ 25V		/
	24/28			10uF/ 50V		/
48	3.3/5	100uF /100V	470uF /50V	22uF/16V	1uF/ 16V	10uF/ 16V
	12/15			22uF/25V	1uF/ 25V	10uF/ 25V

2. EMC compliance circuit

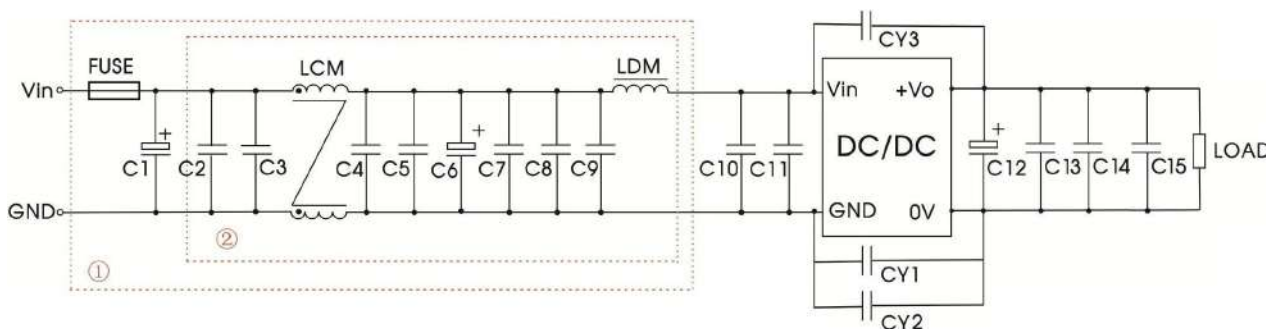


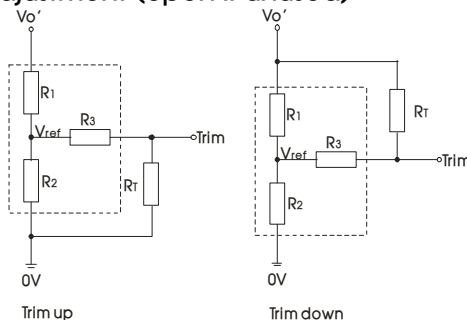
Fig. 3

Notes: We use Part ① in Fig. 3 for Immunity tests and Part ② for Emissions test. Selecting based on needs.
Parameter description:

Components	Vin: 24VDC	Vin: 48VDC
FUSE	Choose according to actual input current	
C1	1000uF/50V	680uF/100V
C2/C3/C4/C5/ C7/C8/C9	4.7uF/50V	4.7uF/100V
LCM	350uH*2, Recommend use SFL2D-30-351	10mH*2, Recommend use Ceaiya FL1515-007
C6	220uF/50V	100uF/100V
LDM	2.2uH	6.8uH
C12	Refer to the Cout in Fig.2	
C13/C14	Refer to the C5, C6 in Fig.2	
C15	/	Refer to the C7 in Fig.2
C10/C11	/	4.7uF/100V
CY1	Y2/222K/250VAC	2200PF/3000VDC
CY2/CY3	/	2200PF/3000VDC

Note: The Part ② of the circuit can be simplified, and ClassA can be satisfied by removing the LCM.

3. Trim Function for Output Voltage Adjustment (open if unused)



TRIM resistor connection (dashed line shows internal resistor network)

DC/DC Converter

SURB_YMD-40WR3 Series

Calculating Trim resistor values:

$$\begin{aligned} \text{up: } R_T &= \frac{\alpha R_2}{R_2 - \alpha} \cdot R_3 & \alpha &= \frac{V_{ref}}{V_{O'} - V_{ref}} \cdot R_1 \\ \text{down: } R_T &= \frac{\alpha R_1}{R_1 - \alpha} \cdot R_3 & \alpha &= \frac{V_{O'} - V_{ref}}{V_{ref}} \cdot R_2 \end{aligned}$$

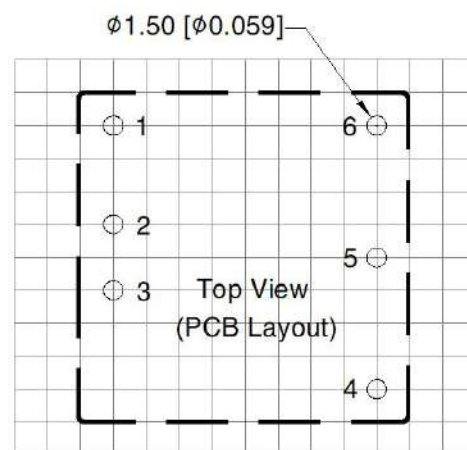
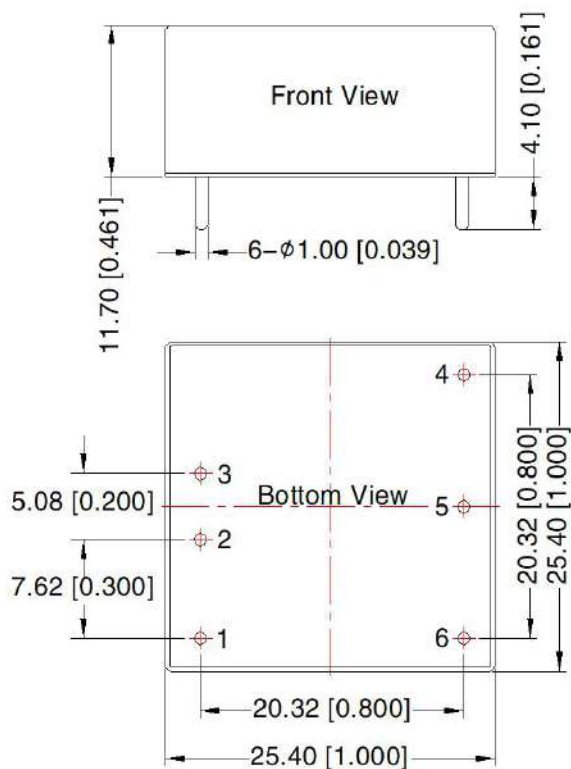
R_T is Trim resistance
 α is a self-defined parameter,
 with no real meaning.

Vout(V)	R1(k Ω)	R2(k Ω)	R3(k Ω)	Vref(V)
3.3	4.83	2.87	4.7	1.25
5	2.87	2.87	5.6	2.5
12	10.91	2.87	15	2.5
15	14.35	2.87	15	2.5
24	24.77	2.87	17.4	2.5
28	29.41	2.87	17.4	2.5

4. The products do not support parallel connection of their output

Dimensions and Recommended Layout

THIRD ANGLE PROJECTION



Note: Grid 2.54*2.54mm

Note:
 Unit: mm[inch]
 Pin diameter tolerances: ± 0.10 [± 0.004]
 General tolerances: ± 0.80 [± 0.031]

Pin-Out	
Pin	Mark
1	Ctrl
2	GND
3	Vin
4	+Vo
5	Trim
6	0V

DC/DC Converter

SURB_YMD-40WR3 Series

Note:

1. The maximum capacitive load offered were tested at input voltage range and full load;
2. Unless otherwise specified, parameters in this datasheet were measured under the conditions of $T_a=25^{\circ}\text{C}$, humidity<75%RH with nominal input voltage and rated output load;
3. All index testing methods in this datasheet are based on company corporate standards;
4. We can provide product customization service, please contact our technicians directly for specific information;
5. Products are related to laws and regulations: see "Features" and "EMC";
6. Our products shall be classified according to ISO14001 and related environmental laws and regulations, and shall be handled by qualified units.