



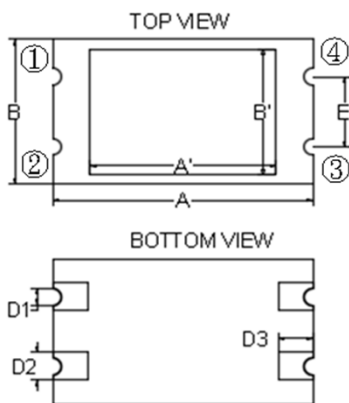
PRODUCT IDENTIFICATION

SACM 9152 L - 110
 |
Type |
Size |
 |
Control |
 |
Inductance

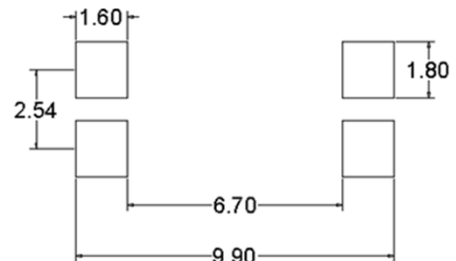
FEATURES

1. Common mode filters for telecom applications
2. 100% Lead (Pb) & Halogen-Free and RoHS compliant.
3. High impedance to minimize common mode noise
4. Excellent EMI performance.
5. Operating temperature-25~+105°C (Including self - temperature rise)
6. High reliability -Reliability tests comply with AEC-Q200.

DIMENSIONS (mm)



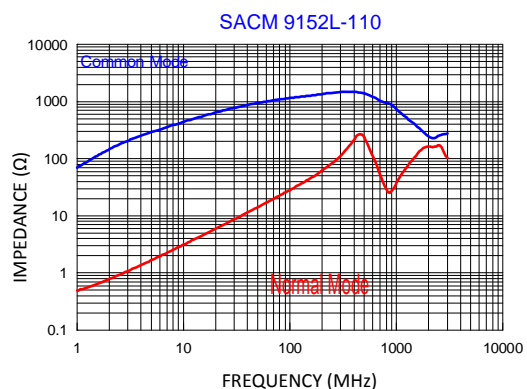
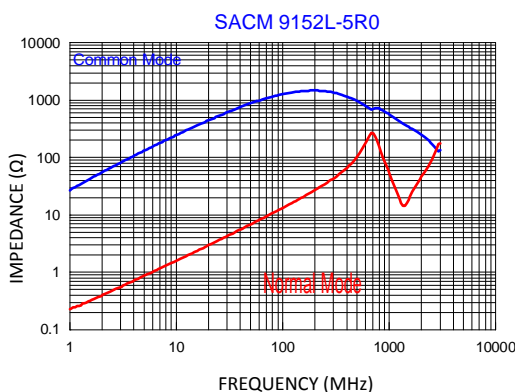
Recommended PC Board Pattern

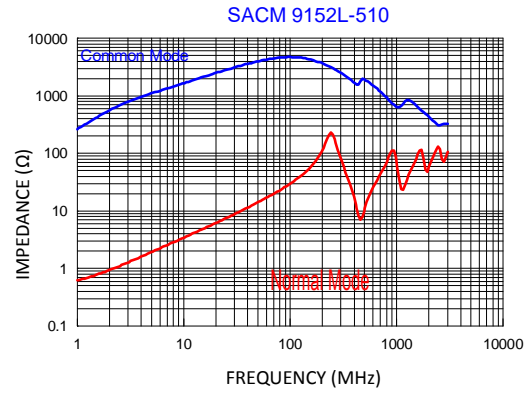
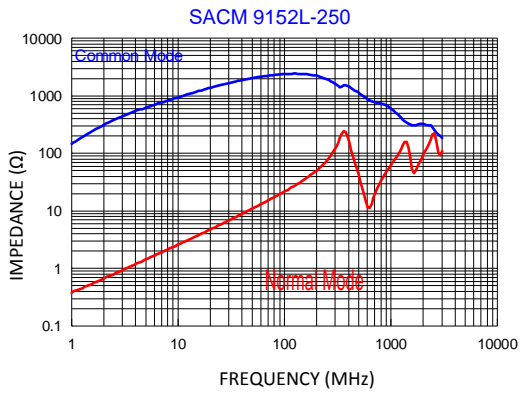


Part No.	L (μH)	Size (mm)									
		A	A'	B	B'	C	C'	D1	D2	D3	E
SACM9152L	5R0	9.10±0.20	4.50±0.20	5.17±0.20	3.20±0.20	3.80±0.20	2.80±0.20	0.60±0.10	1.00±0.10	1.20±0.10	2.50±0.20
	110~510	9.10±0.20	6.50±0.30	5.17±0.20	4.50±0.20	3.80±0.20	2.70±0.20	0.60±0.10	1.00±0.10	1.20±0.10	2.50±0.20

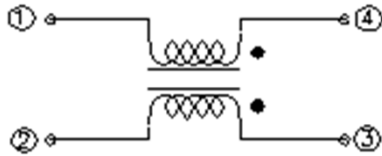
SERIES LIST

No.	Part No.	Inductance (μH) ±30% (1-4)(2-3)	Test Frequency	RDC (Ω) Typ. (1-4)(2-3)	Rated Current (A) Max.	L Stray. (nH) typ.	V test V DC,2s
1	SACM 9152L-5R0	5.0	100KHz/0.1V	0.06	1.20	40	250
2	SACM 9152L-110	11.0	100KHz/0.1V	0.08	1.00	50	250
3	SACM 9152L-250	25.0	100KHz/0.1V	0.11	1.00	60	250
4	SACM 9152L-510	51.0	100KHz/0.1V	0.30	0.80	70	250



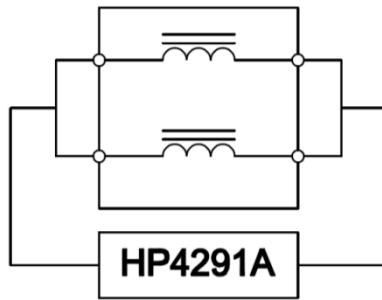


■ SCHEMATIC DIAGRAM

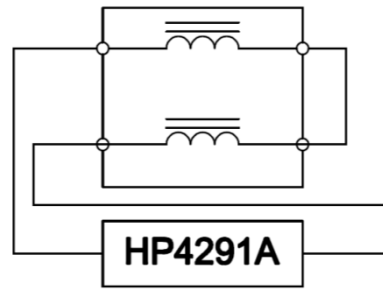


■ MEASURING CIRCUITS 2LINE

Common mode

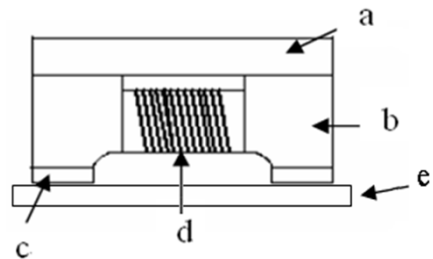


Differential mode



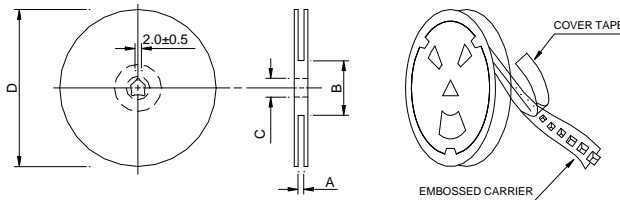
■ Materials

No.	Description	Specification
a	Upper Plate	Ferrite
b	Core	Ferrite Core
c	Termination	Ag/Ni/Sn
d	Wire	Enameled Copper Wire
e	PCB	FR4



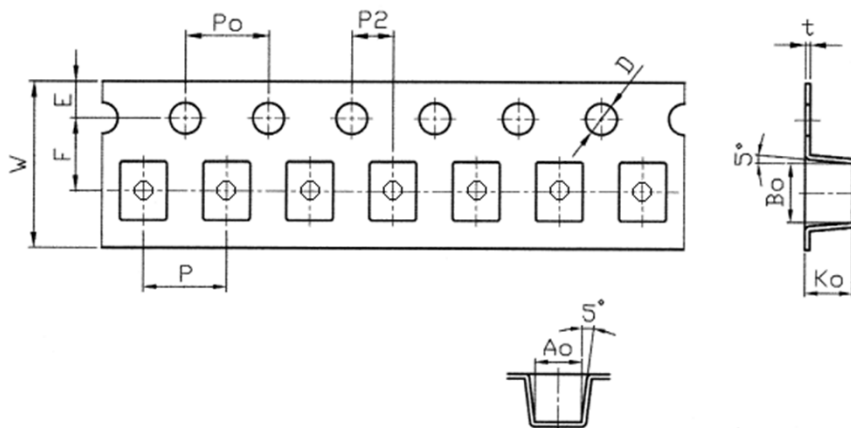
Packaging Information

• Reel Dimension



Type	A(mm)	B(mm)	C(mm)	D(mm)
13"x24mm	24.6±0.5	99.5±1	13.5±0.5	330±1.0

• Tape Dimension



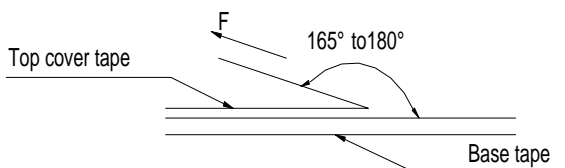
Ao(mm)	Bo(mm)	Ko(mm)	P(mm)	Po(mm)	P2(mm)	D(mm)	D1(mm)	E(mm)	F(mm)	W(mm)	t(mm)
5.50 ±0.10	9.40 ±0.10	3.90 ±0.10	12.00 ±0.10	4.00 ±0.10	2.00 ±0.10	1.50 +0.1-0.0	1.50 ±0.10	1.75 ±0.10	11.5 ±0.10	24.0 +0.30 -0.1	0.35 ±0.05

• Packaging Quantity

Size	Reel
SACM 9152L	1000

• Tearing Off Force

The force for tearing off cover tape is 10 to 130 grams in the arrow direction under the following conditions. (referenced ANSI/EIA-481-C-2003 of 4.11 standard).



Room Temp. (°C)	Room Humidity (%)	Room atm (hPa)	Tearing Speed mm/min
5~35	45~85	860~1060	300

■ Application Notice

- Storage Conditions(component level)

To maintain the solderability of terminal electrodes:

1. Products meet IPC/JEDEC J-STD-020D standard-MSL, level 1.
2. Temperature and humidity conditions: Less than 40°C and 60% RH.
3. Recommended products should be used within 12 months form the time of delivery.
4. The packaging material should be kept where no chlorine or sulfur exists in the air.

- Transportation

1. Products should be handled with care to avoid damage or contamination from perspiration and skin oils.
2. The use of tweezers or vacuum pick up is strongly recommended for individual components.
3. Bulk handling should ensure that abrasion and mechanical shock are minimized.