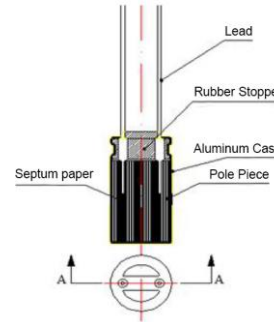


Radial Type Super Capacitor – JGW

STRUCTURE

- This product adopts the shape of a cylindrical capacitor. The interior is a wound structure, and the positive and negative electrodes are separated by a separator and impregnated with electrolyte components; the aluminum casing is sealed with a rubber stopper, the lead-out method is wire lead-out, and the lead-out pole is on the same side of the product.



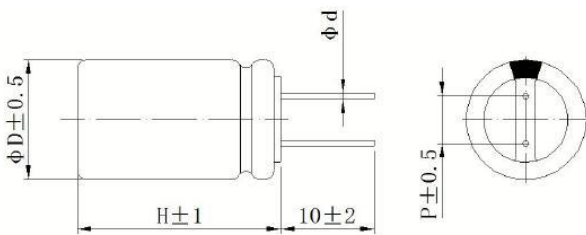
APPLICATIONS

- Smart meter: smart electricity meter, smart water meter, smart gas meter
- Car electronics: car audio, ETC system, driving recorder
- IoT 5G: smart TV, smart refrigerator, smart electronic door, anti-theft system, 5G terminal
- Backup power supply: communication equipment, wireless transmission, RAM, UPS, small household appliances, small energy storage devices, green energy, solar street lights

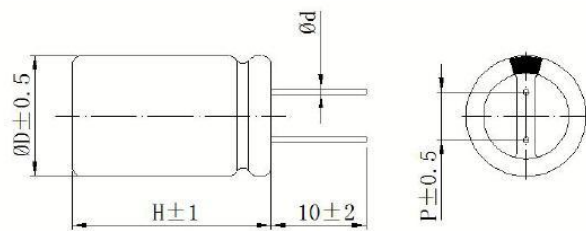
SPECIFICATIONS

Items	Performance Characteristics
Operating Voltage Range	2.5V~3.8V
Surge Voltage	4.2V
Cut-off discharge voltage	2.5V
Cap. Tolerance	-20%~+20%
Operating Temp.	-20℃~65℃; -20℃~85℃ (3.5V)
Self Discharge (3months)	3.0V
Cycle life Expectancy	Normal temperature cycle life: 250,000times. $\Delta C/C$ $\leq 30\%$, $ESR \leq 2$ times the specified value
High temperature load	+65℃ rated voltage, or +85℃ 3.5V voltage, after 1000h, $\Delta C/C$ $\leq 30\%$, $ESR \leq 2$ times the specified value
High temperature without load	+65℃, after 1000h, $\Delta C/C$ $\leq 30\%$, $ESR \leq 2$ times the specified value
Temperature characteristics	+70℃ $\Delta C/C$ $\leq 30\%$, $ESR \leq$ specified value; -20℃ $\Delta C/C$ $\leq 50\%$, $ESR \leq 4$ times the specified value
The steady state damp heat test	+40℃, 90--95%RH, 240h, $\Delta C/C$ $\leq 30\%$, $ESR \leq 2$ times the specified value

DIMENSIONS (mm)



ΦD	P	Φd
6.3	2.5	0.5±0.05
8	3.5	0.6±0.1
10	5.0	0.6±0.1
12.5	5.0	0.6±0.1



ΦD	P	Φd
16	7.5	0.8±0.05
18	7.5	0.8±0.05

Please visit our website to get more update data, those data & specification are subject to change without notice.

Radial Type Super Capacitor – JGW

STANDARD RATINGS

Rated Cap. (F)	Size φDxH (mm)	ESR DC (mΩ)	ESR AC (1KHz) (mΩ)	Rated Current (A)	Pulse Current (A)	Leakage Current (μA)
Rated voltage: 3.8V						
6.5	6.3x10	7000	3500	0.03	0.20	4.0
8	6.3x12.5	7000	3500	0.04	0.25	4.0
10	8x13	2200	800	0.06	0.35	5.0
15	6.3x22	2000	800	0.08	0.45	5.5
20	8x16	1000	500	0.10	0.55	6.0
30	8x20	900	300	0.15	0.90	6.5
38	8x24	700	200	0.20	1.00	7.0
40	8x20	600	200	0.22	1.00	7.0
40	10x16	600	200	0.22	1.00	7.0
50	10x20	600	200	0.28	1.40	7.0
70	10x25	320	120	0.40	2.30	9.0
80	10x20	320	120	0.45	2.50	12.0
100	10x30	250	100	0.60	3.00	13.0
120	12.5x21	250	100	0.70	3.50	18.0
150	12.5x25	250	100	0.80	4.50	20.0
250	12.5x34	200	70	1.40	7.50	30.0
300	16x26	200	70	1.60	9.00	40.0
500	16x34	150	50	2.80	16.00	65.0
800	18x41	80	30	4.50	26.00	110.0
1000	18x60	60	25	5.50	36.00	130.0

Please visit our website to get more update data, those data & specification are subject to change without notice.