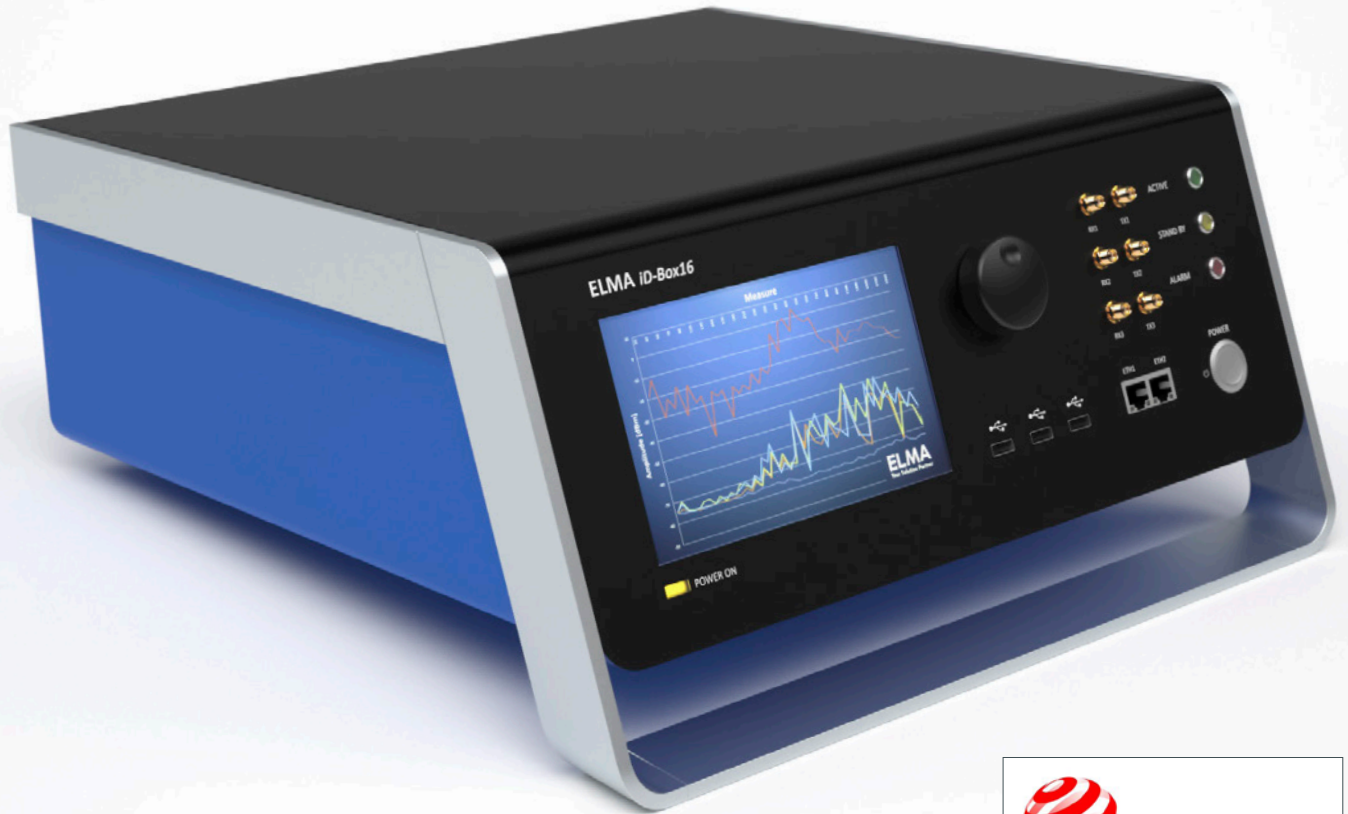




www.atd-elektronik.cz

**ELMA**  
Your Solution Partner



reddot award 2014  
winner

# iD-Box 16

INDIVIDUAL DESIGN HOUSING FOR HIGH-QUALITY ELECTRONICS

SYSTEM SOLUTIONS  
ENCLOSURES & COMPONENTS  
ROTARY SWITCHES



**STANDARD-INDEPENDENT ENCLOSURE PLATFORM**

THE ULTIMATE INDIVIDUAL EXPERIENCE

The iD-Box 16 is a versatile housing for high-quality electronic components. The novelty consists of a standard-independent system that not only addresses the individual needs of the end user but also adapts its size to reflect the application and its needs.

**NO SPACE WASTED**

The housing adapts to your electronics dimensions.

**A CLEVER CONSTRUCTION**

The additional internal housing has been completely eliminated thanks to a simple sheet-metal bracket. This makes the product even more modular in terms of its manufacture. The aluminum frame does not just act as a handle; in addition to integrating the bolt joint, it also offers stability and flows around the housing in an extremely elegant way.



**RED DOT DESIGN AWARD**

The international design competition recognizes outstanding design in the areas of product design, communication design and design concepts. The «red dot» is an internationally recognized quality label for excellent design.

In the year 2014, 1816 manufacturers, designers and architects from 53 countries have submitted their latest products and projects. The jury consists of 40 experts and award the best works from over 4800 designs.

**READABILITY OF THE HMI-INTERFACE**

With an ergonomic approach the iD-Box 16 allows the end-user to use the front panel elements either in a sitting or standing position comfortably thanks to the sloping front. It also provides design freedom, very much in line with the modular principle.

**HIGH DESIGN AESTHETICS**

With fewer screws and its flowing forms, the housing has a minimalist and clean look. Materials such as anodized aluminum give the housing a premium appeal and appearance. The housing's properties are just as unique as its customers.

**HANDLING AND ASSEMBLY**

The set up of this product is a piece of cake and the assembly is as fast as never before! In addition, Elma offers fully integrated system solutions.



**STANDARD-INDEPENDENT ENCLOSURE PLATFORM**

THE ULTIMATE INDIVIDUAL EXPERIENCE

**Size (mm)****You define the dimensions:**

- › Height
- › Width
- › Depth

**Colors****You define the color combination for:**

- › Base plate
- › Cover
- › Frame
- › Rear panel
- › Front panel

**Design & Interface****You define which parts are printed and what features you want to incorporate into your front.**

- › Displays
- › Switches
- › Touch-function
- › LED's
- › Printing: Labeling, logo, photorealistic prints

**EMC****You define the right protection of your enclosure. We offer different levels of EMC protection.**

- › **Increased EMC level:** Contact points ensure adequate shielding.
- › **Basic EMC level:** Electrically-bonded enclosure parts, without additional gaskets.

**Cooling****You define if cooling is needed**

- › Thermal analysis service: To reduce your development process.
- › Convection cooled: We have a comprehensive range of built-in fan solutions.

**Interior****You define what electronics to be installed:**

- › Mounting possibilities: Nuts, bolts, etc.
- › Power supplies
- › Cabling

ENCLOSURES WILL LOOK EXACTLY HOW YOU WANT THEM TO LOOK LIKE

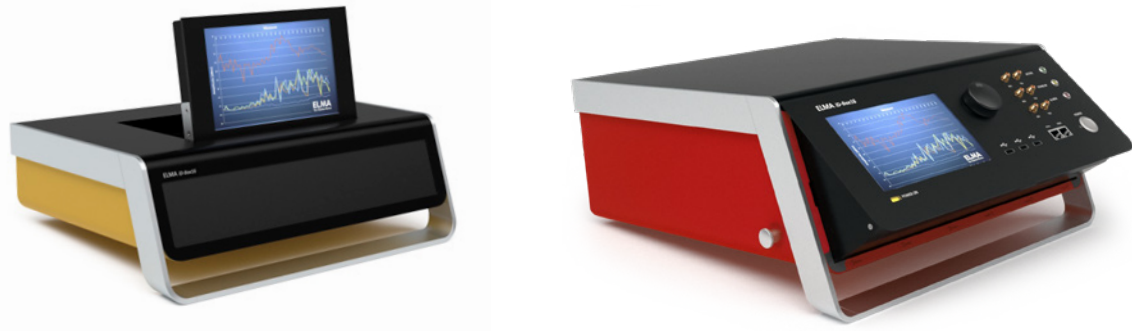
SIZE



COLOURS



FUNCTIONS



**SUPPORT DURING THE ENTIRE PROCESS**

---

APPLICATION EXPERIENCE AND KNOW-HOW SINCE 1960

**We offer:**

- › Design and feasibility studies
- › Thermal analysis
- › 2D and 3D data
- › Prototyping
- › Series production
- › Electronic integration
- › Testing
- › Logistics and packaging

**YOUR SOLUTION PARTNER**

Elma Electronic AG develops and produces high-performance electronics and suitable enclosures from single components to entire systems for industry, railway technology and medical equipment. With over 100 employees in Switzerland alone, we offer innovative, high-quality products, customer-specific solutions and engineering services.

Our key strengths include a high level of development competence and an extensive electronics portfolio. From rotary switches and other electromechanical components to backplanes, computer and storage solutions, power supply units and electronic packaging, all the way to fully integrated systems. On this basis, we are in a position to develop new and trendsetting solutions quickly and safely – in top quality and convincing design, as prototypes or ready for series production.

We are listed on the Swiss Stock Exchange and represented around the world: The Elma Group – Elma Europe, Elma America and Elma Asia – includes subsidiaries in ten countries and a global sales network. In the customer's interest, we co-operate with leading technology providers in the sector and are ourselves regularly approached for advice. Everything from a single source, proven standards, outstanding solutions: Choose Elma Electronic AG.





[www.atd-elektronik.cz](http://www.atd-elektronik.cz)

**Elma Electronic AG,  
Switzerland**

Hofstrasse 93  
CH-8620 Wetzikon  
T: +41 44 933 41 11  
F: +41 44 933 42 15  
[sales@elma.ch](mailto:sales@elma.ch)

**Elma Electronic GmbH,  
Germany**

Stuttgarter Strasse 11  
D-75179 Pforzheim  
T: +49 7231 97 34 0  
F: +49 7231 97 34 97  
[info@elma.de](mailto:info@elma.de)

**Elma Electronic France SA**

16 rue de Hannah Arendt  
Parc des Forges  
F-67200 Strasbourg  
T: +33 38 56 72 50  
[sales@elma-electronic.fr](mailto:sales@elma-electronic.fr)

**Elma Electronic UK Ltd.**

Solutions House  
Priory Business Park  
Fraser Road  
Bedford MK44 3BF  
Great Britain  
T: +44 1234 838822  
F: +44 1234 836650  
[sales@elma.co.uk](mailto:sales@elma.co.uk)

**Elma Electronic Romania SRL**

Chisoda, DN 59 km8 + 550m  
RO-307221 Judetul Timis  
T: +40 374 480 400  
F: +40 256 249 820  
[sales@elma.ch](mailto:sales@elma.ch)

**Elma Electronic Israel Ltd.**

34, Modi'in St., I.Z.Sgula  
IL-49271 Petach-Tikva  
T: +972 3 930 50 25  
F: +972 3 931 31 34  
[sales@elma.co.il](mailto:sales@elma.co.il)

**Elma Electronic Inc., USA**

44350 S. Grimmer Blvd  
Fremont, CA 94538, USA  
T: +1 510 656 3400  
F: +1 510 656 3783  
[sales@elma.com](mailto:sales@elma.com)

**Optima Stantron, USA**

1775 MacLeod Drive  
Lawrenceville, GA 30043, USA  
T: +1 770 496 4000  
F: +1 770 496 4026  
[sales@elma.com](mailto:sales@elma.com)

**Elma Electronic Private Ltd.,  
India**

Green Arch  
3rd Phase 1st Main  
J.P. Nagar  
Bangalore 560078  
[sales@elma.com](mailto:sales@elma.com)

**Elma Electronic Technology  
(Shanghai) CO., Ltd.,  
China**

No. 11 Building, No198  
Chang Jian Road,  
Bao Shan District  
CN-200949 Shanghai  
T: +86 21 5866 5908  
F: +86 21 5866 5918  
[sales@elmachina.com](mailto:sales@elmachina.com)

**Elma Asia Pacific Pte. Ltd.,  
Singapore**

8 Ubi Road 2  
# 07-14 Zervex Building  
SG-408538 Singapore  
T: +65 6479 8552  
F: +65 6479 8662  
[sales.elmaap@elma.com](mailto:sales.elmaap@elma.com)

Your local solution partner



[www.atd-elektronik.cz](http://www.atd-elektronik.cz)