

Product description



MAIN FEATURES

The Varietybox 35 consists of 4 structurally identical corner profiles and 6 flat sheets. The multifunctional corner profiles and flat sheets are made of aluminum. Thanks to the simple structure, assembly is extremely fast. The Varietybox 35 is a cost-effective solution and easy to modify.

- › Multifunctional corner extrusion made from aluminum
- › Flat plates made from aluminum sheet metal 2 mm
- › Fast assembly (1 to 2 min)
- › Very cost effective solution
- › Easy to modify
- › IP40 (without ventilation slots) | IP30 (with ventilation slots)
- › EMC level basic when using clear passivated corner extrusions
- › Hard and wear resistant solution when using anodized corner extrusions

PRODUCT VARIETY

- Predefined standard or custom sizes

POSSIBLE CUSTOMIZATIONS

- Variable sizes
- Anodized or passivated

VARIETYBOX 35



TYPICAL APPLICATIONS

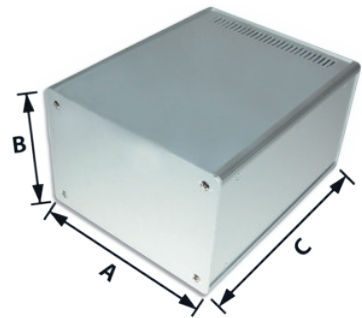
- Test and measurement equipment
- Control instruments
- Service equipment

Executions

SIZES

Standard dimensions:

A		x	B		x	C	
mm	inch		mm	inch		mm	inch
74	2.91		74	2.91		64	2.52
104	4.09		104	4.09		94	3.70
125	4.92		125	4.92			
134	5.27		134	5.27		124	4.88
194	7.63		194	7.63		184	7.24
254	10.0					244	9.60
258.35	10.17		258.35	10.17			
314	12.36		314	12.36		304	11.96



Other dimensions available on request

COLORS

- Profiles: Black or clear anodized
- Customizations on request

MULTIFUNCTIONAL CORNER EXTRUSION

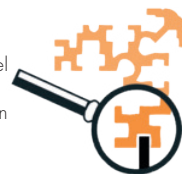
- Functions symmetrical
- Can be mounted twisted
- Size: approx. 30 mm
- Outer radius 5 mm
- Material: Aluminum
- Different colours (anodized or painted)
- Conductive or wear resistant
- Take-up of sheet metal 1.5 or 2 mm
- Mounting through insertion
- Use of flat sheet metal
- Different materials, surfaces, colors



- Groove for direct insertion of PCB's
- Sufficient space for double sided PCB's
- Simple insertion until the card stopper



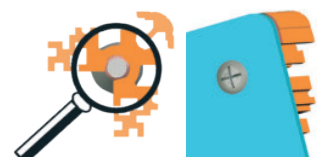
- Groove for direct sliding of a mounting panel or a PCB
- Sufficient place for feet as well as for press-in nuts, screw heads, etc.



- Mounting of an earthing terminal M3.5
- Secure connections to the ground



- Hole for direct mounting of the end plates
- Mounting with 4 screws M4
- Use of flat sheet metal
- Different materials, surfaces, colors
- End plates als can be used as a side panel (by relating the whole box by 90°)

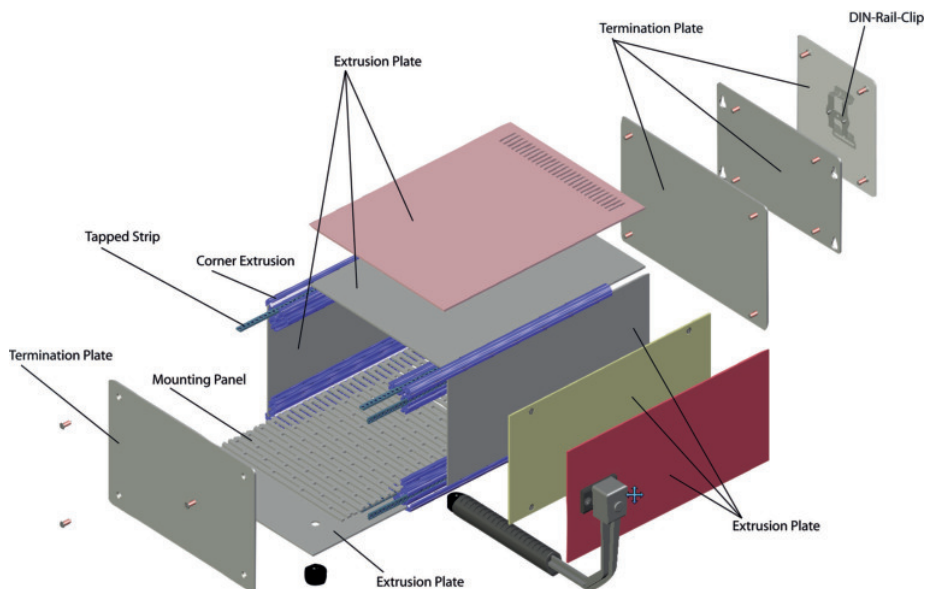
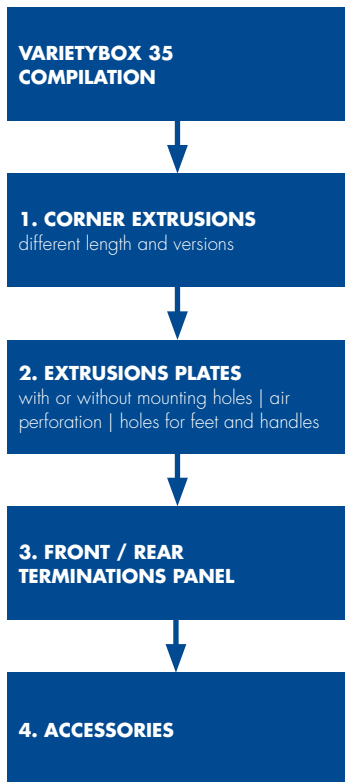


- Hole for direct mounting of an intermediate plate
- For additional stability
- For integration of further features



Product structure

CONFIGURATION

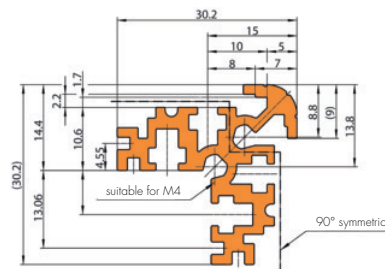


CORNER EXTRUSIONS

- Extruded aluminum
- Versions: Clear anodized / black anodized / clear passivated (conductive)
- 7 different length
- Other sizes, colors and surface treatments on request

Scope of delivery:

- 1 corner extrusion
- For one Varietybox 35 are 4 corner extrusions necessary (order separately)



Length	Part No.					
	mm	inch	clear anodized	black anodized	clear passivated	raw
60	2.36	66-244-060-1	66-244-060-2	66-244-060-3		
90	3.54	66-244-090-1	66-244-090-2	66-244-090-3		
120	4.72	66-244-120-1	66-244-120-2	66-244-120-3		
180	7.08	66-244-180-1	66-244-180-2	66-244-180-3		
240	9.44	66-244-240-1	66-244-240-2	66-244-240-3		
300	11.81	66-244-300-1	66-244-300-2	66-244-300-3		
1350	53.15	66-244-1350-1	66-244-1350-2	66-244-1350-3	66-244-100	



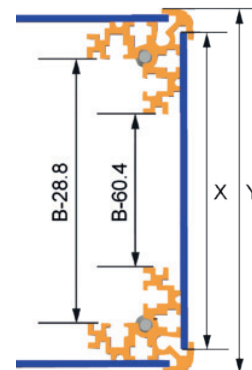
Product structure

EXTRUSIONS PLATES

- Without holes inserted into extrusion
- With or without air perforation
- With or without holes for mounting feet
- With holes for screwing (for more stability and for direct access)
- Material: Aluminum 2 mm | front clear anodized | rear conductive
- Other sizes, colors and surface treatments on request

Scope of delivery:

- 1 extrusion plate
- For one Varietybox 35 are 4 extrusions plates necessary (order separately)



If extrusion plate size is (X)...		...then use terminations panel size (Y)	
mm	inch	mm	inch
60	2.36	74	2.91
90	3.54	104	4.09
120	4.72	134	5.27
180	7.08	194	7.63
240	9.44	254	10.0
300	11.81	314	12.36

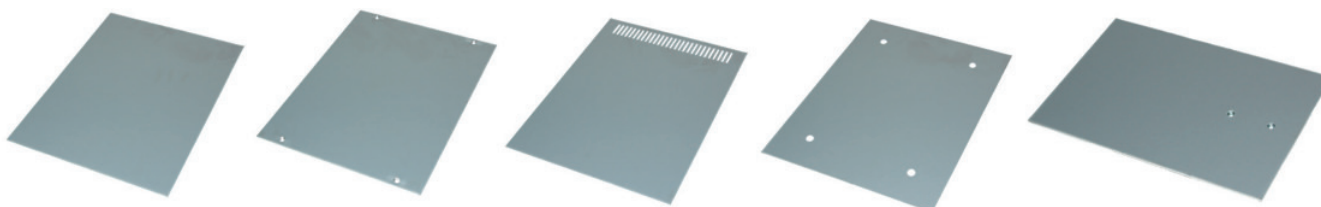
Without holes

With mounting holes

With air perforation

With holes for feet

With holes for handles



EXTRUSION PLATES WITHOUT HOLES

- For simple insertion into the corner extrusions

Scope of delivery:

- 1 extrusion plate

For mounting of
single / double Eurocards:

Dimensions		Part No.
mm	inch	
60 x 60	2.36 x 2.36	35-20001
60 x 90	2.36 x 3.54	35-20002
60 x 120	2.36 x 4.72	35-20003
60 x 180	2.36 x 7.08	35-20004
60 x 240	2.36 x 9.44	35-20005
90 x 90	3.54 x 3.54	35-20036
90 x 120	3.54 x 4.72	35-20006
90 x 180	3.54 x 7.08	35-20007
90 x 240	3.54 x 9.44	35-20008

Dimensions		Part No.
mm	inch	
120 x 120	4.72 x 4.72	35-20009
120 x 180	4.72 x 7.08	35-20010
120 x 240	4.72 x 9.44	35-20012
120 x 300	4.72 x 11.81	35-20041
180 x 180	7.08 x 7.08	35-20013
180 x 240	7.08 x 9.44	35-20014
180 x 300	7.08 x 11.81	35-20042
240 x 240	9.44 x 9.44	35-20016
240 x 300	9.44 x 11.81	35-20037
300 x 300	11.81 x 11.81	35-20038

Dimensions		Part No.
mm	inch	
111.00 x 180	4.37 x 7.08	35-20011
244.35 x 180	9.62 x 7.08	35-20015

Product structure

EXTRUSION PLATES

EXTRUSION PLATE WITH MOUNTING HOLES

- For more stability
- Removable for maintenance and accessibility

Scope of delivery:

- 1 extrusion plate

Dimensions		Effective dimensions		Part No.
mm	inch	mm	inch	
120 x 120	4.72 x 4.72	117.5 x 120	4.62 x 4.72	35-20017
120 x 180	4.72 x 7.08	117.5 x 180	4.62 x 7.08	35-20018
120 x 240	4.72 x 9.44	117.5 x 240	4.62 x 9.44	35-20019
180 x 120	7.08 x 4.72	177.5 x 120	6.98 x 4.72	35-20020
180 x 180	7.08 x 7.08	177.5 x 180	6.98 x 7.08	35-20021
180 x 240	7.08 x 9.44	177.5 x 240	6.98 x 9.44	35-20022
240 x 120	9.44 x 4.72	237.5 x 120	9.35 x 4.72	35-20023
240 x 180	9.44 x 7.08	237.5 x 180	9.35 x 7.08	35-20024
240 x 240	9.44 x 9.44	237.5 x 240	9.35 x 9.44	35-20025

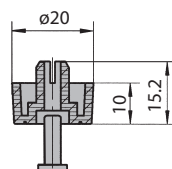
EXTRUSION PLATE WITH AIR PERFORATION

- For thermal optimisation
- IP30 is ensured with air perforation

Scope of delivery:

- 1 extrusion plate

Dimensions		Part No.
mm	inch	
120 x 300	4.72 x 11.81	35-20044
180 x 240	7.08 x 9.44	35-20026
180 x 300	7.08 x 11.81	35-20046
240 x 180	9.44 x 7.08	35-20027
240 x 240	9.44 x 9.44	35-20028
300 x 300	11.81 x 11.81	35-20045



Assembly material:

Description	Length effective length	Part No.
Cross recessed countersunk screw M3 x 6		5332-06
Countersunk screw torx T10 (M3 x 6)		5470-22
Tapped strip 2 x 6 mm, M3	120 / 106.2 mm	61-457
Tapped strip 2 x 6 mm, M3	180 / 212.9 mm	61-428
Tapped strip 2 x 6 mm, M3	240 / 212.9 mm	61-454
Square nut M3		5621-40
Plastic glider		61-015
Set screw for fixing of tapped strips M3 x 6		5413-06

EXTRUSION PLATE WITH HOLES FOR FEET

- For mounting of enclosure feet

Scope of delivery:

- 1 extrusion plate

Dimensions		Part No.
mm	inch	
180 x 240	7.08 x 9.44	35-20029
180 x 300	7.08 x 11.81	35-20043
240 x 240	9.44 x 9.44	35-20030
240 x 300	9.44 x 11.81	35-20039
300 x 300	11.81 x 11.81	35-20040

Enclosure feet:

- Black plastic, UL94 V0
- Easy and fast mounting
- Mounting without tools
- Scope of delivery: Set 4 pieces plastic feet incl. push rivet

Description	Part No.
Set of enclosure feet, black (RAL 9005)	63-528
Set of enclosure feet, light gray (RAL 7035)	63-529

Product structure

EXTRUSIONS PLATES

EXTRUSION PLATE WITH HOLES FOR HANDLES

- For mounting a handle

Scope of delivery:

- 1 extrusion plate

Dimensions		Part No.
mm	inch	
90 x 180	3.54 x 7.08	35-20031
90 x 240	3.54 x 9.44	35-20032
120 x 180	4.72 x 7.08	35-20033
120 x 240	4.72 x 9.44	35-20034
180 x 240	7.08 x 9.44	35-20035



Carrying handle:

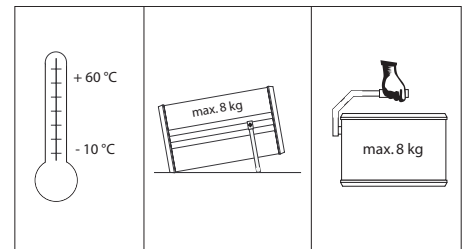
- Zinc die-cast, powder-coated
- Handle piece: Black polyurethane, UL 94V-0
- Handle is 90° detent (carrying position has a slight detent)
- Following the enclosures sizes there are handles available in two widths
- Scope of delivery: Pre-assembled handle with assembly material

Color	Part No. 212 mm 8.34"	Part No. 188 mm 7.40"
Black	33-645	33-646

Assembly material for handle:

- 2 screws per 1 handle

Description	Part No.
Cross recessed countersunk screw M4 x 10	5342-10
Countersunk screw torx T20 (M4 x 10)	5470-26



Carrying capacity dependent on distribution of load and handling.

Product structure

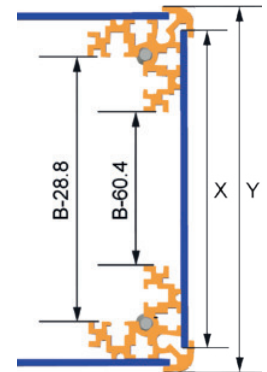
FRONT / REAR TERMINATIONS PANEL

- Aluminum sheet metal 2 mm
- Front clear anodized | rear conductive
- Other sizes, colors and surface treatments on request

Scope of delivery:

- 1 front / rear terminations panel
- For one Varietybox 35 are 2 terminations panel (1 front / 1 rear) necessary

If extrusion plate size is (X)...		...then use extrusion plate size (Y)	
mm	inch	mm	inch
60	2.36	74	2.91
90	3.54	104	4.09
120	4.72	134	5.27
180	7.08	194	7.63
240	9.44	254	10.0
300	11.81	314	12.36



ABSCHLUSSPLATTEN STANDARD

Lieferumfang:

- 1 Abschlussplatte
- Pro Abschlussplatte 4 Schrauben nötig (separat bestellen)

Dimensions		Part No.
mm	inch	
74 x 74	2.91 x 2.91	35-10001
74 x 104	2.91 x 4.09	35-10002
74 x 134	2.91 x 5.27	35-10003
74 x 194	2.91 x 7.63	35-10004
74 x 254	2.91 x 10	35-10005
104 x 104	4.09 x 4.09	35-10006
104 x 134	4.09 x 5.27	35-10007
104 x 194	4.09 x 7.63	35-10008
104 x 254	4.09 x 10	35-10009
134 x 134	5.27 x 5.27	35-10010
134 x 194	5.27 x 7.63	35-10011
134 x 254	5.27 x 10	35-10012
134 x 314	5.27 x 12.36	35-10022
194 x 194	7.63 x 7.63	35-10024
194 x 254	7.63 x 10	35-10013
194 x 254	7.63 x 12.39	35-10023
254 x 254	10.00 x 10	35-10019
254 x 314	10.00 x 12.36	35-10020
314 x 314	12.36 x 12.36	35-10021

TERMINATIONS PANEL FOR EUROCARDS MOUNTING

- Direct sliding of single / double Eurocards

Scope of delivery:

- 1 terminations panel
- Per terminations panel 4 screws are needed (order separately)

Dimensions		Description	Part No.
mm	inch		
125 x 104	4.92 x 4.09	single Eurocards	35-10014
258.35 x 104	10.17 x 4.09	double Eurocards	35-10016

Product structure

FRONT / REAR TERMINATIONS PANEL

TERMINATIONS PANEL FOR DIN-RAIL MOUNTING

- Incl. riveted steel DIN-clip
- Suitable for top hat rails 35 mm according to IEC60715 / EN50022

Scope of delivery:

- 1 terminations panel
- Per terminations panel 4 screws are needed (order separately)

Dimensions		Description	Part No.
mm	inch		
125 x 104	4.92 x 4.09	DIN-Rail mounting	35-10015
258.35 x 104	10.17 x 4.09	DIN-Rail mounting	35-10017



TERMINATIONS PANEL FOR WALL MOUNTING

Scope of delivery:

- 1 terminations panel
- Per terminations panel 4 screws are needed (order separately)

Dimensions			Part No.
mm	inch	mm	
104 x 164	4.09 x 6.45	104 x 134	35-10018

Other dimensions and arrangements on request



SCREWS FOR MOUNTING TERMINATIONS PANEL

- Small head
- Per terminations panel 4 screws are needed and 8 screws per Varietybox 35 (order separately)

Description	Part No.
Countersunk screw torx T10 (M4 x 10)	5441-54
Countersunk screw torx T10 (M4 x 10), black	5441-57

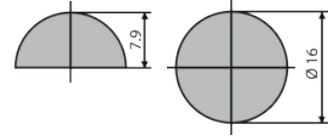
Accessories

BUMPON (SELF ADHESIVE FEET)

- Self adhesive bumpon
- Black polyurethane, UL94 HB

Scope of delivery:

- 1 bumpon



Description	Part No.
Bumpon	7650-52

SEALING GASKET

- For EMC-sealing from extrusion to extrusion plates
- For higher IP-protection (upon request, still in engineering process)
- Firmer securing of non-screwed extrusion plates
- Conductive sealing

Scope of delivery:

- 1 sealing gasket (conductive or non-conductive)



Description	Part No.
Sealing gasket conductive, length 700 mm	33E025
Sealing gasket non-conductive, length 1'000 mm	33-025

MOUNTING PLATES

- Mounting plates made of 2 mm (0.07") thick sheet aluminum
- Dimensions correspond to the respective mounting terminations panel
- Position of the slots allows various mounting arrangements and good air circulation
- Mounting plate is screwed to corner extrusion with M3 nut and screw in 4 places

Scope of delivery:

- 1 mounting plate, aluminum raw



End plate width		Mounting plate dimensions		Part No.
mm	inch	mm	inch	
194	7.63	160 x 116.5	6.30 x 4.72	35-30004
254	10	220 x 116.5	8.66 x 4.72	35-30007
254	10	220 x 176.5	8.66 x 7.08	35-30008
314	12.36	280 x 296.5	11.02 x 11.67	35-30012
314	12.36	280 x 116.5	11.02 x 4.72	35-30014

Other sizes on request

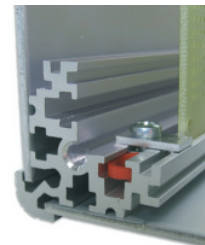
Accessories

CARD STOP

- Card stop are used for card or mounting plate fixation when directly inserted

Scope of delivery:

- 1 card stopper aluminum
- 1 cross recessed screw M3 x 6
- 1 square nut M3
- 2 plastic gliders



Description	Part No.
Straight version	35-00001
Angled version	35-00002



www.atd-elektronik.cz

©Copyright 2018 by Elma Electronic AG, CH-8620 Wetzikon. Subject to technical modifications, all data supplied without liability.

Please contact our sales team for more details.

China: +86 21 5866 5908
France: +33 388 56 72 50

Germany: +49 7231 97 34 0
Israel: +972 3 930 50 25

Singapore: +65 6479 8552
Switzerland: +41 44 933 41 11

United Kingdom: +44 1234 838 822
United States: +1 510 656 3400