

## C05 0504 SCSI-II D-SUB Palstic



### SM C05 0504 XX

Male, Solder, 1,27mm  
Entry Hole Size: 8mm

XX - CONTACT NO.: 26,36

## C05 0506 SCSI-II Centronic IDC



### SM C05 0506 XX Y

Male, Plastic Hood; 1,27mm

XX - CONTACT NO.: 14,20,26,36,50

Y - Entry Hole Size: d:6-9mm

## C05 0507 DVI Connector



### SM C05 0507 XX YZ

XX - CONTACT NO.:  
17=12+4+1(Analog)  
18=18+Key(Digital)  
23=18+4+1(Integrated)  
24=24+Key(Digital)  
29=24+4+1(Integrated)  
Y - CONTACT TYPE:M:Male;  
F:Female  
Z - BODY OPTION:S:Straight;  
R-Right Angle;L:Solder Type

## C05 0508 DVI To D-SUB Changer



### SM C05 0508 XX Z

XX - CONTACT NO.:  
01:DVI12+5/HD15+Cover  
02:DVI12+5/HD15  
03:DVI24+5/HD15  
Z - BODY OPTION:  
A:L:42.5/W:39.5mm (Standart)  
B:L:61.3/W:40.0mm  
C:L:40.3/W:39.5mm  
D:L:30.0/W:39.5mm  
E:L:49.3/W:39.5mm

## C05 0509 Centronic Metal Hood



### SM C05 0509 XX Y

Male, Spring Latches  
Zinc Plated Nickel Over Copper

XX - CONTACT NO.:  
14,20,36,50,68  
Y - ENTRY HOLE SIZE:  
A: 7,5mm(For 26,36P)  
B: 9,0mm(For 26,36,68P)  
C:11,0mm(For50,68P)  
D:14mm(For 68P)

## C05 0510 Centronic Plastic Hood



### SM C05 0510 XX YZ

XX - CONTACT NO.:  
14,20,36,50,68  
Y - CONTACT TYPE:M:Male; F:Female  
Z - ENTRY HOLE SIZE:  
A: 6,5mm(For 20P)  
B: 6,0mm(For 14,20,)  
C:7,0mm(For 20,26P)  
D:7,5mm(For 20,26P)  
E:8,0mm(For 14,20,26,36P)  
F:9,0mm(For 36P,50P)

## C05 0511 Centronic P.C.B.



### SM C05 0511 XX

SCSI-II Centronic PCB;  
1,27mm, Female  
Metal Shell, Straight

XX - CONTACT NO.: 14,50,68

## C05 0512 Centronic Solder



### SM C05 0512 XX

SCSI-II Centronic PCB;  
1,27mm, Male  
Plastic Hood, Straight

XX - CONTACT NO.: 26,36

Y - ENTRY HOLE SIZE:

C: 7,00mm  
E: 8,00mm  
J: 8,5mm

## C05 0513 Centronic IDC Metal

### SM C05 0513 XX Y Z

*Zinc Plated Nickel Over Copper*

- XX - CONTACT NO.:  
26,36,50,68  
Y - CONTACT TYPE: M or F  
Z - ENTRY HOLE SIZE:  
A: 7,5mm(For 26,36P)  
B: 9,0mm(For 26,36,68P)  
C: 11,0mm(For 50,68P)  
D: 14mm(For 68P)



## C05 0514 Centronic Panel Type

### SM C05 0514 XX

*Female, Solder, 1,27mm  
Metal Shell Metal Latch*

- XX - CONTACT NO.: 14,20,26,36,50,68



## C05 0515 Centronic Metal Hood

### SM C05 0515 XX YZ

*Spring Latches  
Zinc Plated Nickel Over Copper*

- XX - CONTACT NO.:  
20,26,36,50,68  
Y - CONTACT TYPE: M or F  
Z - ENTRY HOLE SIZE:  
A: 7,5mm(For 26,36P)  
B: 9,0mm(For 26,36,68P)  
C: 11,0mm(For 50,68P)  
D: 14mm(For 68P)



## C05 0516 SCSI III D-SUB IDC

### SM C05 0516 50 YZ

*50pin; 1,27mm*  
Y - CONTACT TYPE: M or F  
Z - SHELL OPTION:  
A: Metal Shell and Front Latch  
B: Metal Shell Without Front Latch  
C: Plastic Shell Without Front Latch



## C05 0517 Centronic Plastic Hood

### SM C05 0517 XX YZ

- XX - CONTACT NO.:  
14,20,26,36,50  
Y - CONTACT TYPE: M or F  
Z - ENTRY HOLE SIZE:  
A: 6,5mm(20P); B: 6,0mm(14P)  
C: 7,0mm(26P); D: 7,4mm(36P)  
E: 8,0mm(36P); F: 9,0mm(50P)  
I: 10,5mm(50P); J: 8,5mm(36P)



## C05 0518 SCI-II D-SUB PCB

### SM C05 0518 XX Y

*Female, 1,27mm*

- XX - CONTACT NO.: 50,68  
Y - SHELL OPTION:  
A: Metal Shell and Front Latch  
B: Metal Shell Without Front Latch  
C: Plastic Shell Without Front Latch



## C05 0519 Centronic Right Angle

### SM C05 0519 XX Y

*Female, 1,27mm*

- XX - CONTACT NO.: 20,26,28,40  
50,60,68,80,100  
Y - SHELL OPTION:  
A: Metal Shell and Front Latch  
B: Metal Shell Without Front Latch  
C: Plastic Shell Without Front Latch



## C05 0520 Centronic PCB Right Angle

### SM C05 0520 XX Y

*Female, 1,27mm*

- XX - CONTACT NO.:  
14,20,26,36,50,68,100  
Y - SHELL OPTION:  
A: Metal Shell and Front Latch  
B: Metal Shell Without Front Latch



C05 0540 - D-SUB Solder Type



**SM C05 0540 XX Y**  
*Stamped Pin*

XX - CONTACT No.:  
09; 15; 25; 37; 50  
Y - CONTACT TYPE:  
M:Male; F:Female;  
A:Male (E.M.I.);  
B:Female(E.M.I.)

C05 0541 - D-SUB PCB Straight



**SM C05 0541 XX Y**

XX - CONTACT No.:  
09; 15; 25; 37; 50  
Y - CONTACT TYPE:  
M:Male; F:Female  
A:Male (E.M.I.)  
B:Female(E.M.I.)

C05 0542 - D-SUB Crimp Housing



**SM C05 0542 XX Y**

XX - CONTACT No.:  
09; 15; 25; 37; 50  
Y - CONTACT TYPE:  
M:Male; F:Female

**SM C05 0542 TM**

Terminal Male

**SM C05 0542 TF**

Terminal Female

C05 0543 - D-SUB PCB Front Metal



**SM C05 0543 XX Y**

XX - CONTACT No.:  
09; 15; 25; 37  
Y - CONTACT TYPE:  
M:Male; F:Female

C05 0550 - D-SUB PCB Right Angle



**SM C05 0550 XX YW**

XX - CONTACT No.:  
09; 15; 25; 37  
Y - CONTACT TYPE:  
M:Male; F:Female  
A:Male (E.M.I.)  
B:Female (E.M.I.)  
W- BODY DIMENSION:  
A=7,2mm; B=9,4mm  
C=13,84mm

C05 0560 - High Density Solder Type



**SM C05 0560 XX Y**  
*Stamped Type*

XX - CONTACT No.:  
15,26,44,62,78  
Y - CONTACT TYPE:  
M:Male; F:Female

C05 0561- High Density Straight



**SM C05 0561 XX Y**  
*Staight, Stamped Pin*

XX - CONTACT No.:  
15,26,44,62,78  
Y - CONTACT TYPE:  
M:Male; F:Female  
A:Male (E.M.I.)  
B:Female(E.M.I.)

C05 0562 - High Density Right Angle



**SM C05 0562 XX Y**

XX - CONTACT No.:  
15,26,44,62,78  
Y - CONTACT TYPE:  
M:Male  
F:Female  
A:Male (E.M.I.)  
B:Female(E.M.I.)



## C05 0563 - High Density Crimp

### SM C05 0563 XX Y

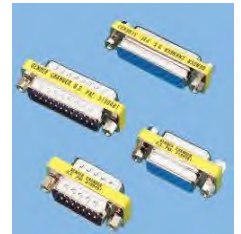
XX - CONTACT No.:  
15, 26, 44, 62, 78  
Y - CONTACT TYPE:  
M: Male; F: Female



## C05 0564 - D-SUB Gender Changer

### SM C05 0564 XX Y

XX - CONTACT No.:  
**09:** 09/09; **15:** 15/15; **25:** 25/25  
**37:** 37/37; **03:** 09/25  
**05:** HDD15/HDD15; **35:** 15/HDD15  
**45:** 9/HDD15; **13:** 13W3/HDD15  
**06:** 09  
Y - CONTACT TYPE:  
A: M/M; B: M/F  
C: F/F; D: F/M

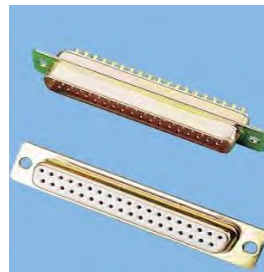


## C05 0570 - D-SUB Solder Type

### SM C05 0561 XX Y

*D-SUB, Machined Pin*

XX - CONTACT No.:  
15,26,44,62,78  
Y - CONTACT TYPE:  
M:Male; F:Female  
A:Male (E.M.I.)  
B:Female(E.M.I.)



## C05 0571 - D-SUB PCB Straight

### SM C05 0571 XX YZ

*D-SUB, Machined Pin*

XX - CONTACT No.:  
9, 15, 25, 37, 50  
Y - CONTACT TYPE:  
M: Male; F: Female;  
A: Male (E. M. I.)  
B: Female (E. M. I.)

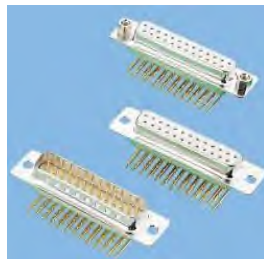


## C05 0572 - D-SUB Right Angle

### SM C05 0572 XX Y

*D-SUB, Machined Pin*

XX - CONTACT No.:  
9, 15, 25, 37, 50  
Y - CONTACT TYPE:  
M: Male; F: Female

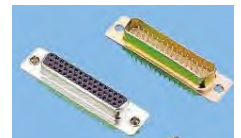


## C05 0574 - High Density Solder

### SM C05 0574 XX Y

*D-SUB, Machined Pin*

XX - CONTACT No.:  
15, 26, 44, 62, 78  
Y - CONTACT TYPE:  
M: Male; F: Female  
A: Male (E. M. I.)  
B: Female (E. M. I.)



## C05 0580 - D-SUB I.D.C. Type

### SM C05 0580 XX Y

XX - CONTACT No.:  
9, 15, 25, 37  
Y - CONTACT TYPE:  
M: Male; F: Female



## C05 0523 and C05 0525 For Notebook

### SM C05 0523 15 Y

*Female; High Density*

Y - FUNCTION:  
S: Straight; R: Right Angle

### SM C05 0525 XX Y

*D-SUB, Straight*

XX - CONTACT No.: 9, 25  
Y - CONTACT TYPE:  
M: Male; F: Female



C05 1034 - D-SUB COMBO Right Angle

SM C05 1034 07YZ  
2 Contacts



SM C05 1034 09YZ  
3 Contacts



SM C05 1034 04YZ  
2+5 Contacts



SM C05 1034 05YZ  
3+10Contacts



SM C05 1034 06YZ  
2+15Contacts



C05 1033 - D-SUB COMBO Right Angle

SM C05 1034 08YZ  
2 Contacts -Same



SM C05 1034 10YZ  
3 Contacts - Same



SM C05 1034 11YZ  
5 Contacts



SM C05 1034 12YZ  
8 Contacts



**SM C05 1034-XX YZ**

XX - CONTACT No.:  
Y - CONTACT TYPE:  
M: Male; F: Female  
Z - CURRENT:  
1=10A; 2=20A;  
3=30A; 4=40A

C05 1033 - D-SUB COMBO Straight Solder

SM C05 1033 04YZ  
2 Contacts



SM C05 1033 06YZ  
3 Contacts



SM C05 1033 07YZ  
2+5 Contacts



SM C05 1033 02YZ  
3+10 Contacts



SM C05 1033 03YZ  
2+15 Contacts



C05 1033 - Straight, Solder

SM C05 1033 05YZ  
2 Contacts



SM C05 1033 09YZ  
5 Contacts



C05 1034 Machine Pin

SM C05 1034 16YZ  
2 Contacts



SM C05 1034 18YZ  
3 Contacts



C05 1035 R/A

SM C05 1035 01YZ  
2+5 Contacts



SM C05 1033 08YZ  
3 Contacts Same



SM C05 1033 10YZ  
8 Contacts



SM C05 1034 13YZ  
2+5 Contacts



SM C05 1033 15YZ  
3+10 Contacts



SM C05 1035 02YZ  
3+10 Contacts



## C05 D- SUB PLASTIC BACKSHELLS

**SM C05 3101 XX**

XX- CONTACT: 9,15,25,37



**SM C05 3102 XX**

XX- CONTACT: 9,15,25,37



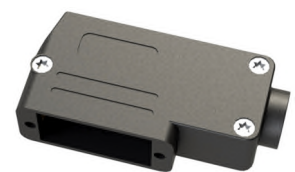
**SM C05 3103 XX**

XX- CONTACT: 9,25



**SM C05 3104 XX**

XX- CONTACT: 9,15,25,37



## C05 D- SUB PLASTIC BACKSHELLS

**SM C05 3201 XX**

XX- CONTACT: 9,15,25,37



**SM C05 3202 XX**

XX- CONTACT: 9,15,25,37



**SM C05 3203 XX**

XX- CONTACT: 9,15,25,37



**SM C05 320 XX**

XX- CONTACT: 9,15,25,37



## C05 D- SUB PLASTIC BACKSHELLS

**SM C05 3205 XX**

XX- CONTACT: 9,15,25,37



**SM C05 3206 XX**

XX- CONTACT: 9,15,25,37



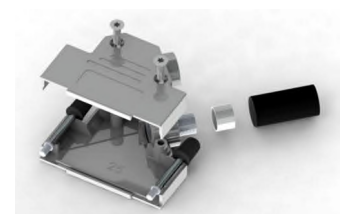
**SM C05 3207 XX**

XX- CONTACT: 9,15,25,37



**SM C05 3208 XX**

XX- CONTACT: 9,15,25,37



## C05 D- SUB PLASTIC BACKSHELLS

**SM C05 3209 XX**

XX- CONTACT: 9,15,25,37



**SM C05 3210 XX**

XX- CONTACT: 9,15,25,37



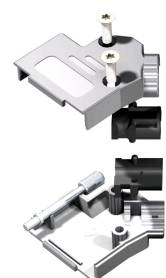
**SM C05 3211 XX**

XX- CONTACT: 9,15,25,37



**SM C05 3212 XX**

XX- CONTACT: 9,15,25,37





## C05 D- SUB PLASTIC BACKSHELLS

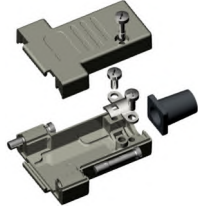
**SM C05 3213 XX**

XX- CONTACT: 9,15



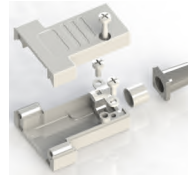
**SM C05 3216 09**

XX- CONTACT: 9



**SM C05 3215 09**

XX- CONTACT: 9



**SM C05 3216 09**

XX- CONTACT: 9



## C05 D- SUB PLASTIC BACKSHELLS

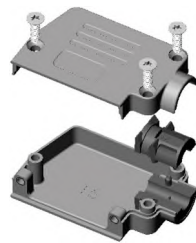
**SM C05 3217 XX**

XX- CONTACT: 9,15



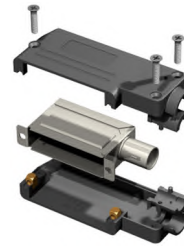
**SM C05 3218 XX**

XX- CONTACT: 9,15



**SM C05 3219 XX**

XX- CONTACT: 9,15,25,37



**SM C05 3220 XX**

XX- CONTACT: 9,15,25,37



## C05 D- SUB PLASTIC BACKSHELLS

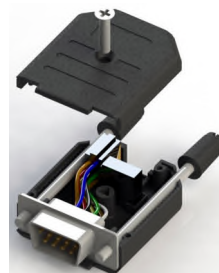
**SM C05 3301 XX**



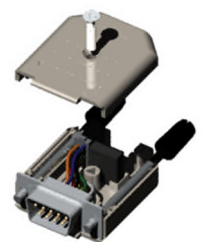
**SM C05 3302 XX**



**SM C05 3303 XX**



**SM C05 3304 XX**



## Crimtool FOR D-SUB

