

# SCHMID-M



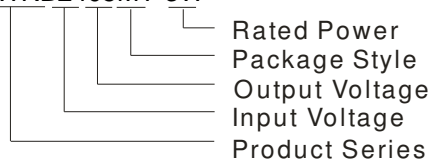
## SWRB\_MT-3W Series

**3W, WIDE INPUT, ISOLATED & REGULATED  
SINGLE OUTPUT, DC-DC CONVERTER**



### PART NUMBER SYSTEM

SWRB2405MT-3W



### FEATURES

- Efficiency up to 83%
- 2:1 wide input voltage range
- Operating Temperature range: -40 ~ +85°C
- 1.5KVDC isolation
- Ultra-Miniature, SMD Package
- No Power derating ( $\leq 85^{\circ}\text{C}$ )
- Short Circuit Protection (automatic recovery)
- Low no-load power
- External On/Off control

### APPLICATION

The SWRB\_MT-3W Series are specially designed for applications where a wide range input voltage power supplies are isolated from the input power supply in a distributed power supply system on a circuit board. For these DC-DC converters, You can reduce the design point of failure and save the development of micro power supply's manpower, material and time costs, also better ensure product quality stability, protect safety and reliability of the end of products.

These products apply to where:

- 1) Input voltage range  $\leq 2:1$ ;
- 2) 1.5KVDC input and output isolation;
- 3) Regulated and low ripple noise is required.

### SELECTION GUIDE

Model	Input Voltage(VDC)		Output Voltage (VDC)	Output Current (mA)		Input Current (mA)(typ.)		Reflected Ripple Current (mA,typ.)	Max. Capacitive Load ( $\mu\text{F}$ )	Efficiency (% ,typ.) @Max. Load
	Nominal (Range)	Max. <sup>①</sup>		Max.	Min.	@Max. Load	@No Load			
SWRB1205MT-3W	12 (9-18)	20	5	600	30	316	20	30	2200	79
SWRB1212MT-3W			12	250	12	309				81
SWRB1215MT-3W			15	200	10	305				82
SWRB2405MT-3W	24 (18-36)	40	5	600	30	156	7	110	2200	81
SWRB2412MT-3W			12	250	12	152				82
SWRB2415MT-3W			15	200	10	152				82
SWRB2424MT-3W			24	125	6	157				80
SWRB4805MT-3W	48 (36-75)	80	5	600	30	78	7	45	2200	80
SWRB4812MT-3W			12	250	12	74				83
SWRB4815MT-3W			15	200	10	74				83

Note:①.Absolute maximum rating without damage on the converter.

### INPUT SPECIFICATIONS

Item	Test Conditions	Min.	Typ.	Max.	Unit
Input Surge Voltage (1sec. max.)	12VDC input	-0.7	--	25	VDC
	24VDC input	-0.7	--	50	
	48VDC input	-0.7	--	100	
Start-up Voltage	12VDC input	4.5	--	9	VDC
	24VDC input	11	--	18	
	48VDC input	24	--	36	
Input Filter		C Filter			
CTRL*	Models ON	CTRL open or be insulated			
	Models OFF	Connect high level voltage, and ensure the current into CTRL to be 5-10mA			

Note: \*Please refer to "DESIGN CONSIDERATIONS" as the direction for use of CTRL .

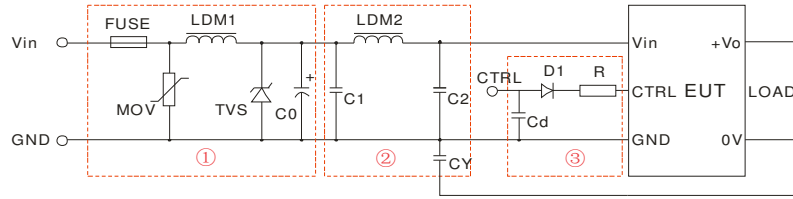
OUTPUT SPECIFICATIONS					
Item	Test Conditions	Min.	Typ.	Max.	Unit
Output Voltage Accuracy	5% to 100% load	--	±1	±3	%
No-load Output Voltage Accuracy	Input voltage range	--	±1.5	±5	
Line Regulation	Full load, Input voltage from low to high	--	±0.2	±0.5	
Load Regulation	5% to 100% load	--	±0.2	±0.8	
Transient Recovery Time	25% load step change	--	0.5	3	ms
Transient Response Deviation		--	±2.5	±5	%
Temperature coefficient	100% load	--	±0.02	±0.03	%/°C
Ripple*	20MHz Bandwidth	--	30	45	mVp-p
Noise*		--	45	100	
Output Short Circuit Protection	Input voltage range	Continuous, automatic recovery			
Note:* Ripple and noise tested with "parallel cable" method. See detailed operation instructions at <i>DC-DC application notes</i> .					

COMMON SPECIFICATIONS					
Item	Test Conditions	Min.	Typ.	Max.	Unit
Isolation Voltage	Tested for 1 minute,leakage current less than 1 mA	1500	--	--	VDC
Isolation Resistance	test at 500VDC	1000	--	--	MΩ
Isolation Capacitance	Input/Output,100KHz/0.1V	--	35	45	pF
Switching Frequency(PFM Mode)	100% load,Nominal Input voltage	--	250	--	KHz
MTBF	MIL-HDBK-217F@25°C	1000	--	--	K hours
Case Material		Epoxy Resin (UL94-V0)			
Weight		--	4.8	--	g

ENVIRONMENTAL SPECIFICATIONS					
Item	Test Conditions	Min.	Typ.	Max.	Unit
Storage Humidity	Non condensing	--	--	95	%
Operating Temperature	Power derating (above85°C,see Figure 5)	-40	--	85	°C
Storage Temperature		-55	--	125	
Temp. rise at full load	Ta=25°C	--	25	--	
Lead Temperature	1.5mm from case for 10 seconds	--	--	300	
Cooling		Free air convection			

EMC SPECIFICATIONS					
EMI	CE	CISPR22/EN55022 CLASS B(External Circuit Refer to Figure1-② or Figure 3)			
	RE	CISPR22/EN55022 CLASS B(External Circuit Refer to Figure1-② or Figure 3)			
EMS	ESD	IEC/EN61000-4-2	Contact ±4KV/ Air ±8KV	perf. Criteria B	
	RS	IEC/EN61000-4-3	10V/m	perf. Criteria A	
	EFT	IEC/EN61000-4-4	±2KV	perf. Criteria B(External Circuit Refer to Figure1-①)	
		IEC/EN61000-4-4	±4KV	perf. Criteria B(External Circuit Refer to Figure 3)	
	Surge	IEC/EN61000-4-5	±2KV	perf. Criteria B(External Circuit Refer to Figure1-① or Figure 3)	
	CS	IEC/EN61000-4-6	3 Vr.m.s	perf. Criteria A	
	Voltage dips, short and interruptions immunity	IEC/EN61000-4-29	0%-70%	perf. Criteria B	

## EMC RECOMMENDED CIRCUIT



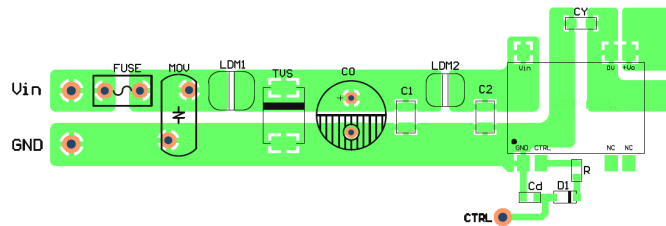
(Figure 1)

Recommended external circuit parameters:

Model	Vin: 12V	Vin: 24V	Vin: 48V
FUSE	Choose according to actual input current		
MOV	--	10D560	10D101
LDM1	--	56μH	56μH
TVS	SMCJ28A	SMCJ48A	SMCJ90A
C0	680μF/50V	120μF/50V	120μF/100V
C1	4.7μF/50V	4.7μF/50V	4.7μF/100V
LDM2	12μH	12μH	12μH
C2	4.7μF/50V	4.7μF/50V	4.7μF/100V
CY	1nF/2KV	1nF/2KV	1nF/2KV
D1	RB160M-60/1A		
R	Follows: $R = \frac{V_C - V_D - 1.0}{I_C} - 300$		
Cd	47nF/100V		

- Note:
- In Figure 1, part ① is EMS recommended external circuit, part ② is EMI recommended external circuit. Choose according to requirements;
  - If there is no recommended parameters, the model no require the external component;
  - $V_C$  is the voltage to GND from CTRL,  $V_D$  is the forward conduction voltage drop of D1,  $I_C$  is the current through CTRL pin which is normally 5-10mA, the external circuit of CTRL is as shown in figure1-③.

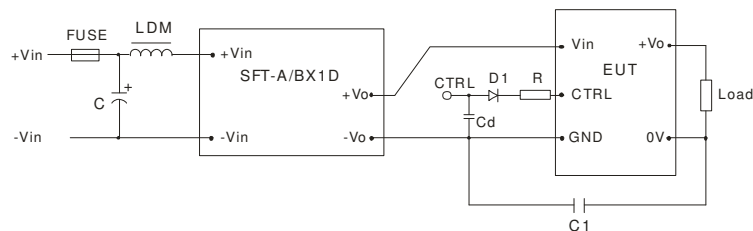
## EMC RECOMMENDED CIRCUIT PCB LAYOUT



(Figure 2)

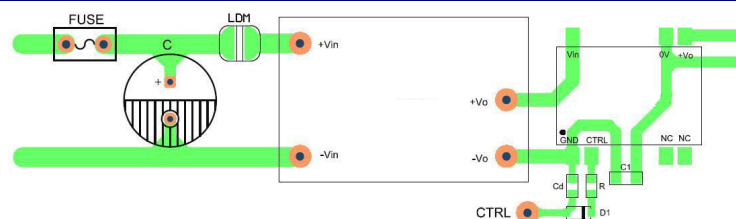
Note: The space between input and output GND (CY) must  $\geq 2$ mm.

## EMC MODULE APPLICATION CIRCUIT

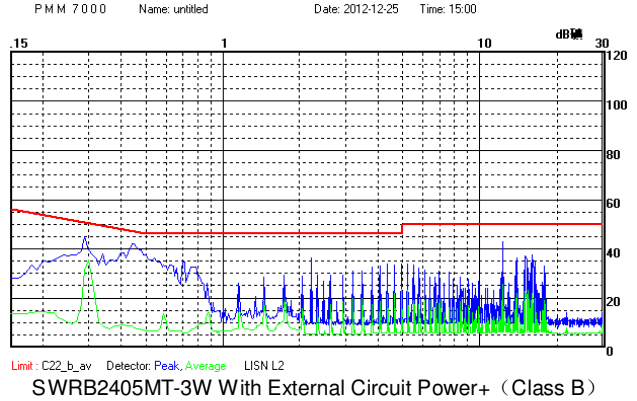
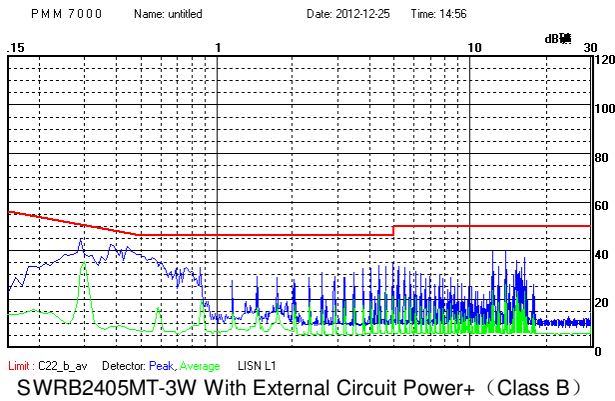


SFT-A/BX1D is SCHMID-M's EFT suppresser  
 For nominal voltage <48V,  $C \geq 330\mu\text{F}/50\text{V}$   
 For nominal voltage =48V,  $C \geq 330\mu\text{F}/100\text{V}$   
 LDM=12uH,  $C1=1\text{nF}/2000\text{V}$   
 (Figure 3)

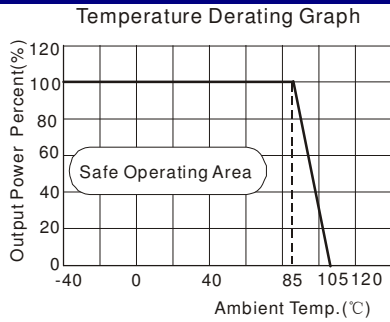
## EMC MODULE RECOMMENDED CIRCUIT PCB LAYOUT



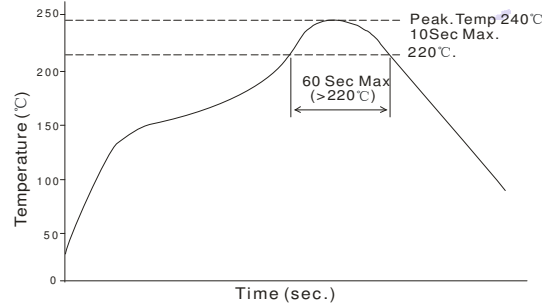
## EMI TEST WAVEFORM (NOMINAL AND FULL LOAD)



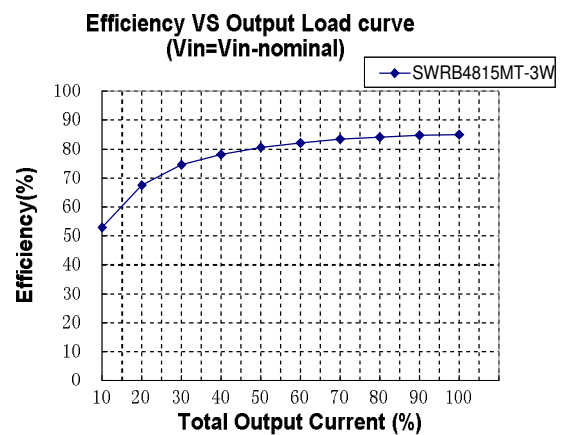
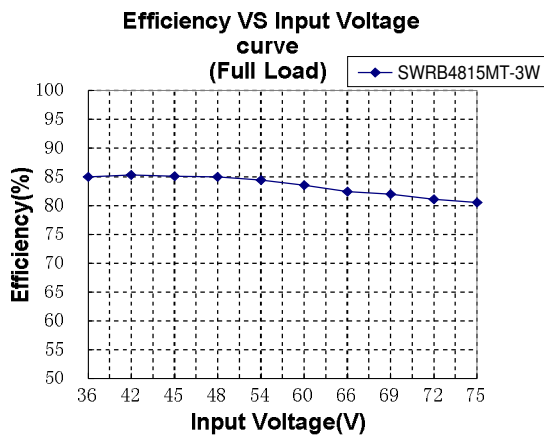
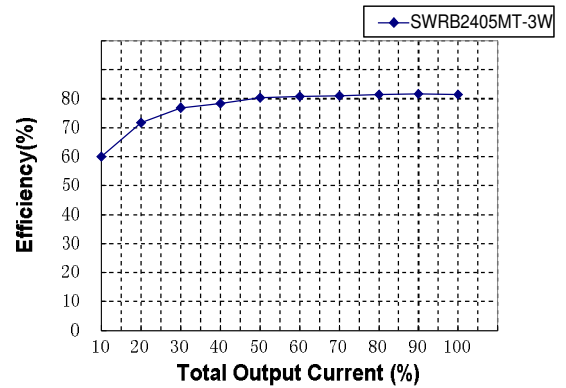
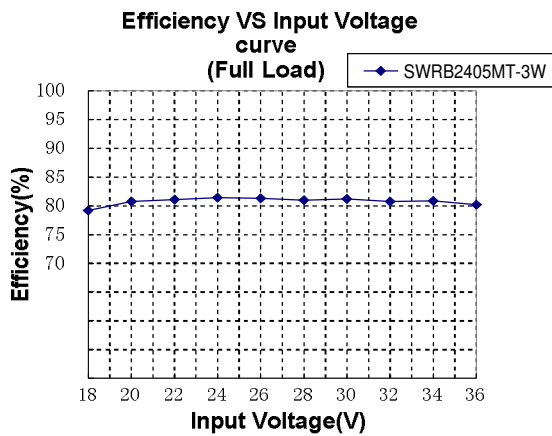
## PRODUCT TYPICAL PERFORMANCE CURVE



(Figure 5)

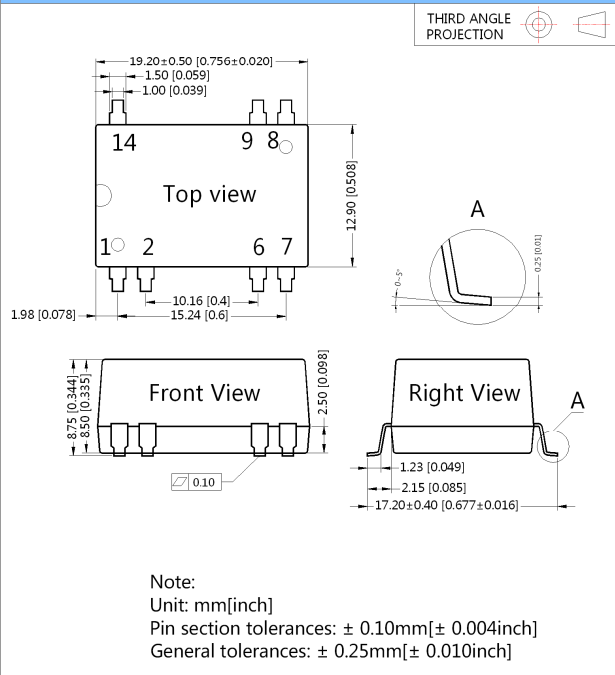


Note: The curve only applies to the hot air reflow soldering

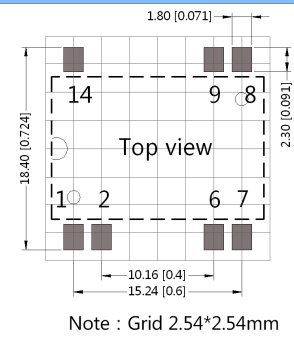


# DIMENSIONS, RECOMMENDED FOOTPRINT & PACKAGING

## MECHANICAL DIMENSIONS



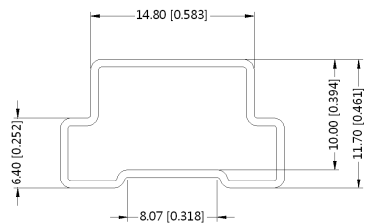
## RECOMMENDED FOOTPRINT DETAILS



PIN CONNECTION	
Pin	Function
1	GND
2	CTRL
6	NC
7	NC
8	+V0
9	0V
14	Vin

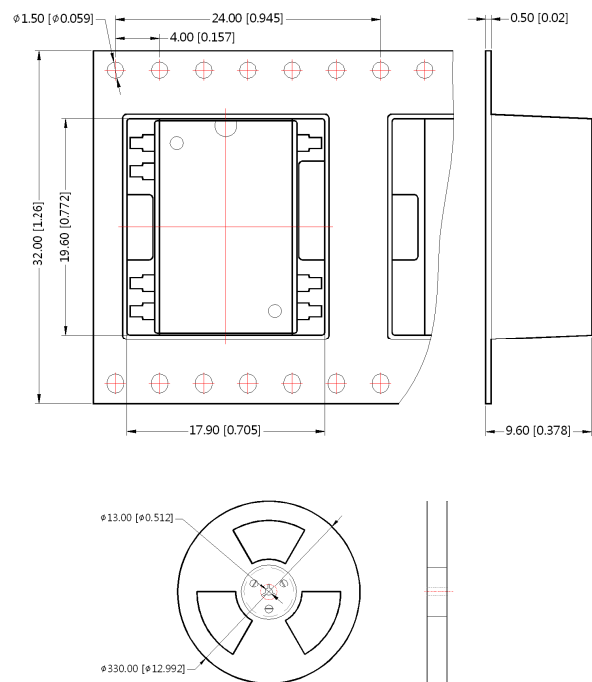
NC:No Connection

## TUBE PACKAGING DIMENSIONS



**Note:**  
 Unit: mm[inch]  
 General tolerances: ±0.50mm[±0.020inch]  
 L=530mm[20.866inch] Quantity:26pcs;  
 L=220mm[8.661inch] Quantity:10pcs;  
 Inner carton(S):L\*W\*H=255\*170\*80mm;  
 Outer carton(S):L\*W\*H=375\*280\*270mm;  
 Inner carton(L):L\*W\*H=580\*200\*100mm;  
 Outer carton(L): L\*W\*H=600\*215\*220mm,2 inner cartons(L);  
 Outer carton(L): L\*W\*H=600\*215\*325mm,3 inner cartons(L).

## REEL PACKAGING DIMENSIONS

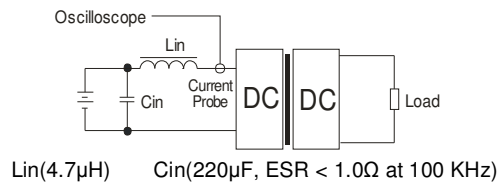


**Note:**  
 Unit: mm[inch]  
 General tolerances: ± 0.50mm[± 0.020inch]  
 Per reel of packing quantity: 250pcs;  
 Inner carton: L\*W\*H=365\*350\*105mm  
 Quantity:750pcs;  
 Outer carton: L\*W\*H=390\*360\*245 mm  
 Quantity:1500pcs.

## TEST CONFIGURATIONS

### Input Reflected-Ripple Current Test Setup

Input reflected-ripple current is measured with an inductor  $L_{in}$  and Capacitor  $C_{in}$  to simulate the source impedance.



## DESIGN CONSIDERATIONS

### 1) Requirement on output load

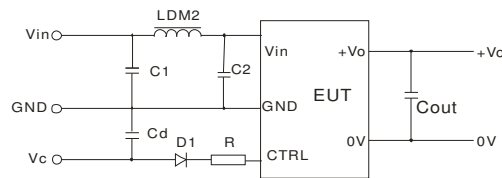
To ensure this module can operate efficiently and reliably, during operation, the minimum output load could not be less than 5% of the full load, otherwise ripple may increase dramatically. If the actual output power is very small, please connect a resistor with proper resistance at the output end in parallel to increase the load, suppose to use the resistance of 5% rated power, or use our company's products with a lower rated output power.

### 2) Recommended circuit

All the SWRB\_MT-3W Series have been tested according to the following recommended test circuit before leaving the factory (see Figure 6).

If you want to further decrease the input/output ripple, you can increase a capacitance-values properly or choose capacitors with low ESR. However, the capacitance of the output filter capacitor must be proper. If the capacitance is too big, a startup problem might arise. Provided the safe and reliable operation is ensured, the greatest capacitance of its filter capacitor must be less than the Max. Capacitive Load.

Recommended circuit refer to "EMC RECOMMENDED CIRCUIT".



(Figure 6)

### 3) CTRL Terminal

When open or high impedance, the converter works well. When this pin is 'high', the converter shut down. It should be note that the input current should be between 5-10mA, exceeding the maximum 20mA will cause permanent damage to the converter. The value of R can be derived as follows:

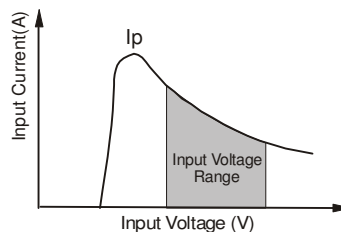
$$R = \frac{V_C - V_D - 1.0}{I_C} - 300$$

For detailed parameter, please refer to "EMC RECOMMENDED CIRCUIT".

### 4) Input current

When it is used in unregulated power supply, be sure that the fluctuating range of the power supply and the rippled voltage do not exceed the module standard. Input current of power supply should afford the flash startup current of this kind of DC/DC module (Figure 7).

General:  $V_{in}=12V$   $I_p=675mA$   
 $V_{in}=24V$   $I_p=320mA$   
 $V_{in}=48V$   $I_p=160mA$



(Figure 7)

### 5) The modules can't be used in parallel or hot swap applications

Note:

1. Min. load shouldn't be less than 5%, otherwise ripple may be increased dramatically. If the product operates under min. load, it may not be guaranteed to meet all specifications listed. Operation under minimum load will not damage the converter.
2. All specifications measured at  $T_a=25^{\circ}C$ , humidity<75%, nominal input voltage and rated output load unless otherwise specified.
3. In this datasheet, all test methods are based on our corporate standards.
4. All characteristics are for listed models, and non-standard models may perform differently. Please contact our technical support for more details.
5. Please contact our technical support for any specific requirement.
6. Specifications of this product are subject to changes without prior notice.