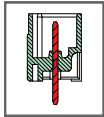
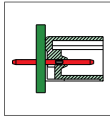


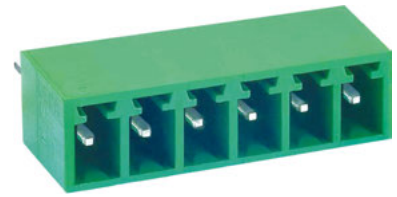
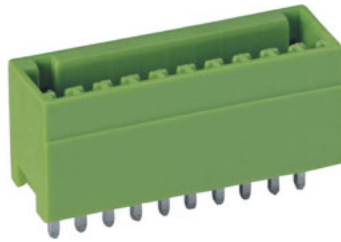
ME040 PCB Connector, Header



ME040-250



ME040-350

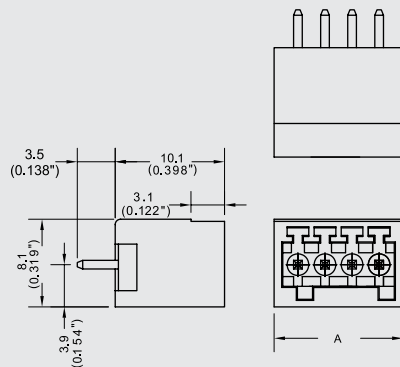


DIMENSIONS/POSITIONS

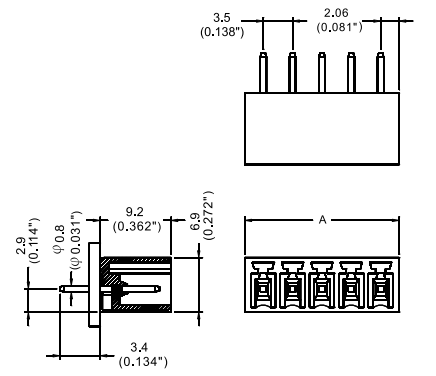
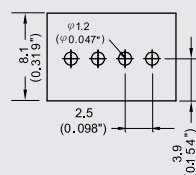
DIMENSIONS/POSITIONS		ME040-250	ME040-350
間距	Pitch	2.50mm	3.50mm
位數	Poles	2 ~ 24Poles	2 ~ 24Poles
尺寸a	Dimension a	2.50mm	3.50mm
長度 A	Length	A= 2.50xP+1.90mm(P≥2)	A= 3.50xP+0.60mm(P≥2)
塑膠本體	Housing Material	PA 66	PA 66
焊針	Pin Dimensions	Brass, Tin Plated	Brass, Tin Plated
PCB孔徑	PCB Hole Diameter	1.2mm	1.3mm
環境作業溫度	Operating Temperature	-40°C to +105°C	-40°C to +105°C

TECHNICAL DATA

連接符合標準 Connection in acc. with standard EN-VDE			
額定電流 I _N	Nominal Current I _N	4A	8A
額定橫截面	Nominal Cross Section	-	-
最大負載電流	Maximum load current	4A	8A
絕緣材料	Insulating Material	PA	PA
阻燃等級, 符合UL94 Inflammability class acc. to UL94		V0	V0
額定電壓, UL/CUL Nominal voltage, UL/CUL		125V	300V
額定電流, UL/CUL Nominal current, UL/CUL		4A	10A



PCB Layout



PCB Layout

