

POWER SUPPLIES

88PMK30120024005



Thickness: 56 mm
Description: 1-Phase power supply - 24Vdc / 5A
Application: Machine automation, industrial control system, household applications
Series: 88PMK30
Colour: Black

88PMK30120024005



Thickness: 108 mm
Description: 3-Phase power supply - 48 - 85 Vdc / 15A max
Application: Machine automation, industrial control system, household applications
Series: 88PTA3
Colour: Black

CURRENT SENSORS

88DCM23310



Thickness: 20 mm
Description: Hall sensor current module - 2 channels - 10A - 0-10 Vdc
Application: Direct and alternate current measurement
Series: 88DCM23
Colour: Black

88DCM23310



Thickness: 20 mm
Description: Hall sensor current module - 2 channels - 50A - 4-20 mA
Application: Direct and alternate current measurement
Series: 88DCM23
Colour: Black

DISTRIBUTED I/O

88DMM2110000



Thickness: 20 mm
Description: Distributed I/O optical transmission - master module - Ethernet
Application: Data transmission
Series: 88DMM2
Colour: Black

88DMM2410800



Thickness: 20 mm
Description: Distributed I/O optical transmission - input module
Application: Data transmission
Series: 88DMM2
Colour: Black

ELECTRONIC EVOLUTION

More types and information on our website.

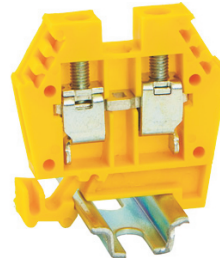
SCREW SYSTEM

43408



Thickness: 5 mm
 Description: Terminal block EURO 2.5 grey - EURO J system
 Application: 2 - number of connections
 Series: EURO 2,5
 Colour: Grey

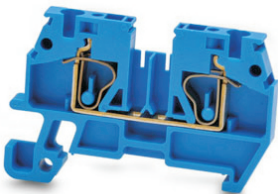
43427-N



Thickness: 6 mm
 Description: Terminal block EURO 4/15 yellow - EURO J4 system
 Application: 2 - number of connections
 Series: EURO 4/15
 Colour: Yellow

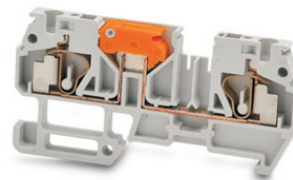
SCREWLESS SYSTEM

42416 BL



Thickness: 5 mm
 Description: Screwless TB EURO Q 2.5 blue x EURO J
 Application: 2 - number of connections
 Series: EURO Q2,5
 Colour: Blue

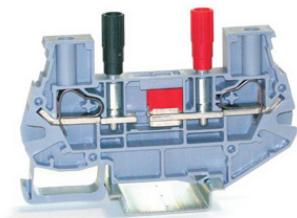
42419



Thickness: 5 mm
 Description: Screwless disconnect terminal block EURO QT 2.5/35
 Application: knife disconnect
 Series: EURO QT
 Colour: Grey

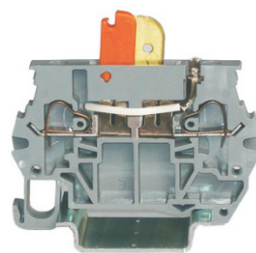
SPRING SYSTEM

42TA600



Thickness: 8 mm
 Description: Disconnect terminal blocks slider - for Amperometric configuration
 Application: 2 - number of connections
 Series: EURO TEST6
 Colour: Grey

4258204



Thickness: 6 mm
 Description: Pivoted knife Disconnect EUROFull4 - springsystem - LED12V
 Application: knife disconnect
 Series: EUROFull 4
 Colour: Grey

TOOLS

43515



Thickness: 5,1 mm
 Description: Ratched Cutting Tool for 43525/24 EURO J2,5 - orange
 Application: cutting
 Series: EURO TOOLS
 Colour: Orange

50Q0010



Thickness: 1
 Description: Spring Opening Tool flat tip for EURO Q2,5 series
 Application: to compress
 Series: EURO TOOLS
 Colour: Green

DIN rail terminal blocks

More types and information on our website.