

# 4: Handles / Feet



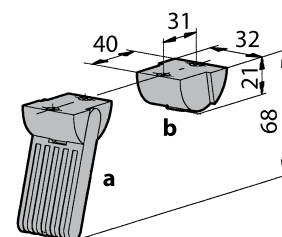
## 4.2 Feet

### 4.2.1 Case Feet Type 15



#### 4.2.1 Case Feet Type 15

- With and without tilt feet
- Glass-fiber reinforced plastic, UL94 V-0
- Including screws 3.5 x 8
- Up to 30 kg carrying capacity per set
- **Scope of delivery:**
  - 2 + 2 case feet, incl. rubber inserts NBR
  - 8 countersunk PT-screws 3.5 x 8

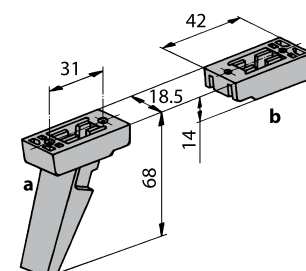


Description	Colour	Screw	Part-No.
Case feet 2 x <b>a</b> + 2 x <b>b</b>	Light grey (RAL 7035)	Cross recessed	63-524
		Torx	63K524
Case feet 2 x <b>a</b> + 2 x <b>b</b>	Black (RAL 9005)	Cross recessed	63-526
		Torx	63K526
Case feet 2 x <b>a</b> + 2 x <b>b</b>	Dark grey (special)	Cross recessed	63-525
		Torx	63K525

### 4.2.2 Case Feet Type 14



- With or without tilt feet
- Glass-fiber reinforced plastic, UL94 V-0
- Including screws 3.5 x 7
- Up to 30 kg carrying capacity per set
- **Scope of delivery:**
  - 4 case feet
  - 8 cross recessed countersunk PT-screws 3.5 x 7
  - 4 rubber inserts NBR



Description	Colour	Part-No.
Case feet 4 x <b>b</b>	Light grey (RAL 7035)	63-019
Case feet 4 x <b>b</b>	Black (RAL 9005)	63-321
Case feet 2 x <b>a</b> + 2 x <b>b</b>	Light grey (RAL 7035)	63-018
Case feet 2 x <b>a</b> + 2 x <b>b</b>	Black (RAL 9005)	63-320

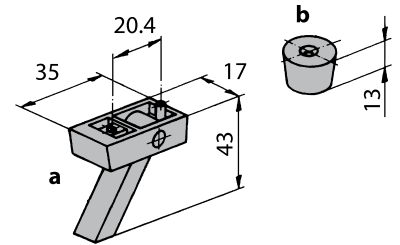
# 4: Handles / Feet

## 4.2.3 Feet



### 5.2.3 Case Feet

- Including cross recessed self-tapping countersunk screws 2.9 x 9.5
- Up to 30 kg carrying capacity set

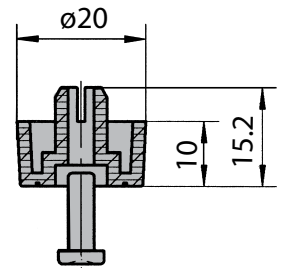


Material	Scope of delivery	Colour	Part-No.
Glass-fiber reinforced plastic	10 x a + 10 screws	Light grey (RAL 7035)	63-345
Neoprene	10 x b + 10 screws	Grey	63-346

## 4.2.4 Push in Feet



- Plastic, UL94 V-0
- Easy and fast mounting without tools
- Drilling:  $\varnothing 8 \pm 0.1$  mm
- Sheet metal: 1 to 2.5 mm
- Set of 4 pieces plastic foot
- Incl. push rivet



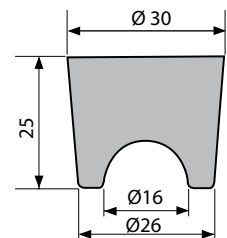
Description	Part-No.
Set of case feet light grey (RAL 7035)	63-529
Set of case feet black (RAL 9005)	63-528

## 4.2.5 Rubber Case Feet



### 5.2.5 Rubber Case Feet

- Including self-tapping screw 3.5 x 16
- Material: Neoprene 70 Shore A
- **Scope of delivery:**
  - 4 case feet
  - 4 cross recessed self-tapping countersunk screws 3.5 x 16



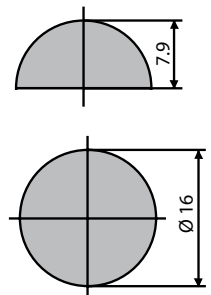
Description	Colour	Part-No.
Set of case feet	Stone-grey RAL 7030	63-441

## 4.2.6 Bumpon (Self adhesive Feet)



### 5.2.6 Bumpon (Self adhesive Feet)

- Self adhesive bumpon
- Black polyurethane, UL94 HB
- **Scope of delivery:**
  - Set of 4 pcs.



Description	Part-No.
Set of 4 plastic bumpon	7650-52-4