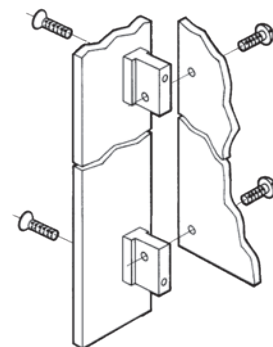


# 3: PCB Accessories

## 3.2 Card Holders acc. to IEC Standard

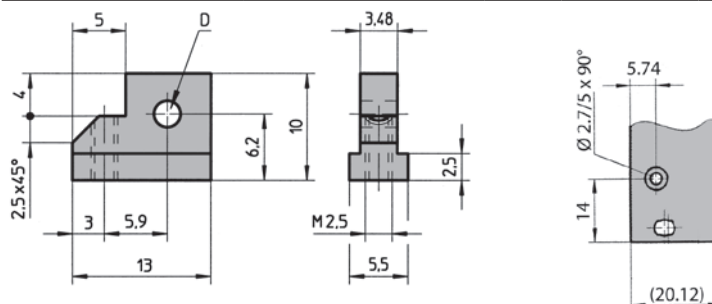
- By using the zinc die-cast card holder, flat front panels can be connected to a PC card to form a plug-in unit to IEC 60297
- The card can be mounted both in the standard position and offset 1 HP (5.08 mm)
- For better positioning of 6 U cards, there is a card holder centre piece made of nylon (see 3.3)
- The injector-/ejector handle can be used with the card holder
- **Scope of delivery:**
  - 1 card holder
- Assembly material see 3.2.3



### 3.2.1 Card Holders without Swivel Stop

#### 3.2.1 Card Holders without Swivel Stop

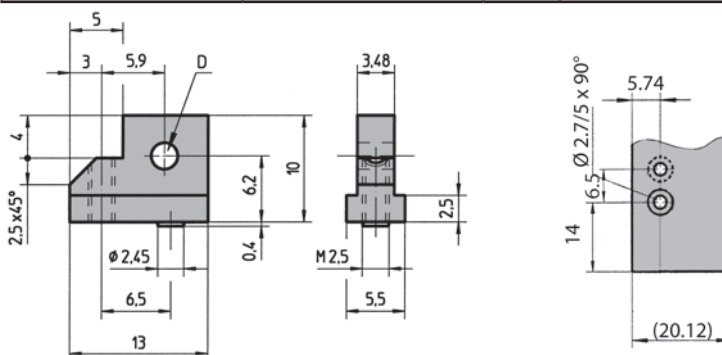
Description	Application	D	Part-No.
Card holder without swivel stop	Without injector/ejector handle	M2.5	61-156
Card holder without swivel stop	With injector/ejector handle	Ø 2.5	61-155



### 3.2.2 Card Holders with Swivel Stop

#### 3.2.2 Card Holders with Swivel Stop

Description	Application	D	Part-No.
Card holder with swivel stop	Without injector/ejector handle	M2.5	61-156-01
Card holder with swivel stop	With injector/ejector handle	Ø 2.5	61-155-01



### 3.2.3 Assembly Material

#### 3.2.3 Assembly Material

Description	Application	Part-No.
Cross recessed countersunk screw M2.5 x 8	For card holder	5322-08
Torx countersunk screw M2.5 x 8, size T8	For card holder	5470-21
Slotted pan head screw M2.5 x 6	For printed board	5571-06
Torx cylinder head screw M2.5 x 6, size T8	For printed board	5470-04

