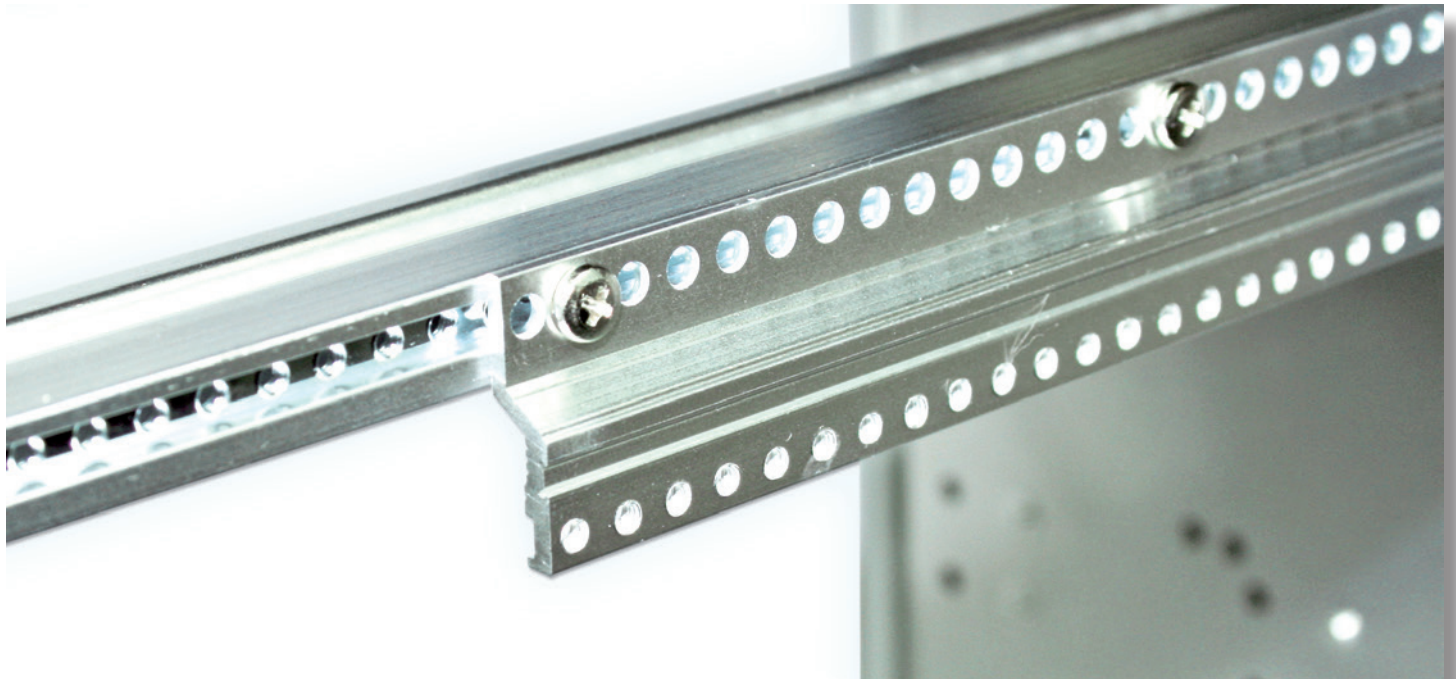


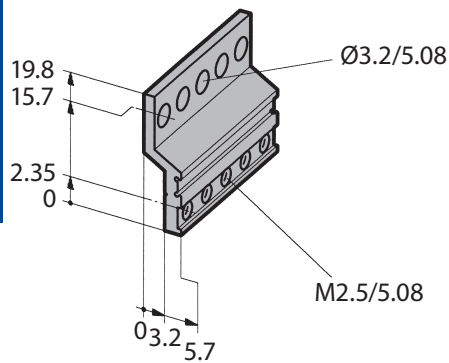
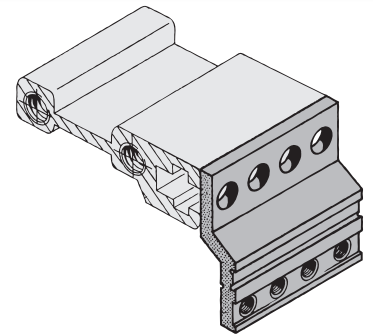
# 6: Extrusions



## 6.4 Edge Connector Extrusion and Insulating Strips

### 6.4.1 Edge Connector Extrusion 66-145

- For use with standard extrusion 66-144
- **Scope of delivery:**
  - Edge connector extrusion without assembly material



#### 6.4.1.1 Edge Connector Extrusion 66-145

Length for HP	mm		Part-No.	
	mm	inch	clear passivated	raw
8	40.6	1.59	66-145-40	-
18	91.4	3.59	66-145-41	-
28	142.2	5.60	66-145-42	-
42	213.4	8.40	66-145-63	-
63	320.0	12.60	66-145-65	-
84	426.7	16.80	66-145-52	-
	1350.0	53.14	-	66-145-19

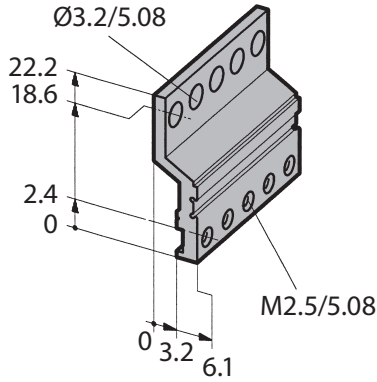
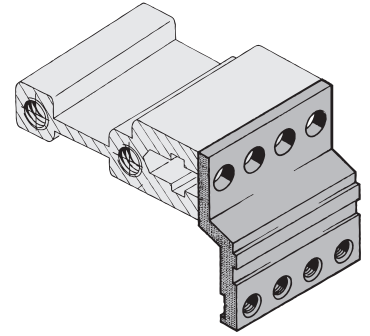
#### Assembly Material

Description	Part-No.
Assembly material M2.5 (for 2 supplementary extrusions)	63-214

# 6: Extrusions

## 6.4.2 Edge Connector Extrusion 66-147

- For use with extrusions for backplanes 66-193
- **Scope of delivery:**
  - Edge connector extrusion without assembly material



### 6.4.2.1 Edge Connector Extrusion

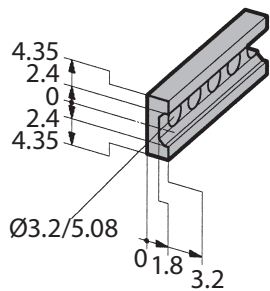
Length for HP	mm	inch	Part-No.	
			clear passivated	raw
8	40.6	1.59	66-147-40	-
18	91.4	3.59	66-147-41	-
28	142.2	5.60	66-147-42	-
42	213.4	8.40	66-147-63	-
63	320.0	12.60	66-147-65	-
84	426.7	16.80	66-147-52	-
	1350.0	53.14	-	66-147-19

### Assembly Material

Description	Part-No.
Assembly material M2.5 (for 2 supplementary extrusions)	63-214

## 6.4.3 Insulating Strips 66-901

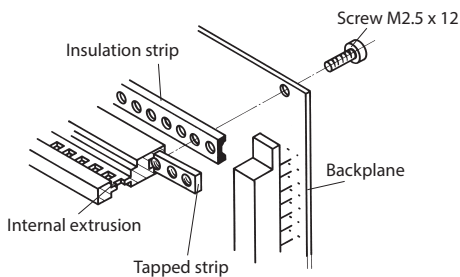
- Plastic grey
- In use with extrusions 66-112, 66-192, 66-193, 66-288
- **Scope of delivery:**
  - 1 insulating strip without assembly material



### 6.4.3.1 Insulating Strips 66-901

Length for HP	mm	inch	Part-No.
42	216.44	8.52	66-901-20
63	323.12	12.72	66-901-21
81	414.56	16.32	66-901-22
84	429.80	16.92	66-901-23

### Mounting with Insulation Strips



Description	Part-No.
Cross recessed cylinderhead earthing screw M2.5 x 12	5325-12