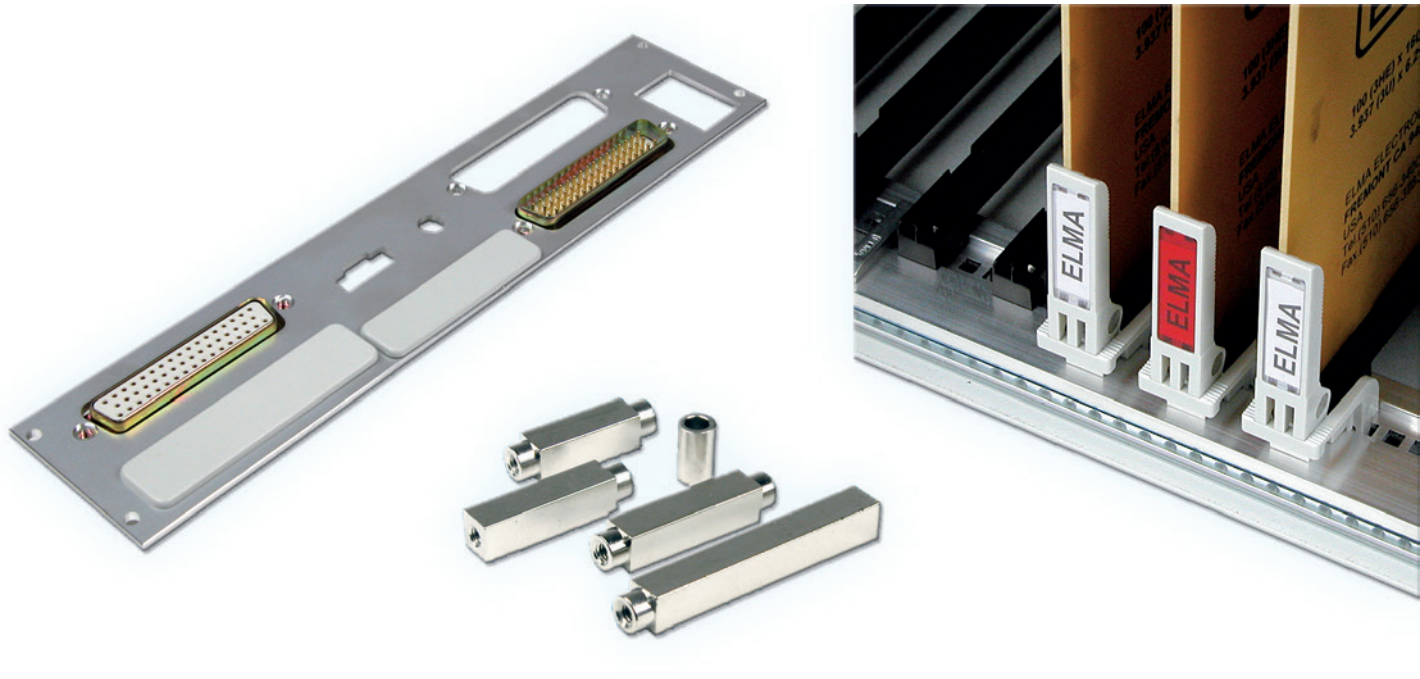


3: PCB Accessories



3.1 Card Locks and Card Handles

- The card lock is easily mounted onto the upper or lower front profile
- When the PCB is pushed home, it is automatically locked into position
- The card eject mechanism can be attached to the top or bottom front edge of the PCB and is used in conjunction with the card lock
- The lever action ensures smooth and jerk-free card removal, especially useful when multi-pole connectors are being used
- Transparent windows in different colours and self-adhesive labels set into the front face of the eject mechanism make card identification easy
- The card lock and eject mechanism does not inhibit the use of front panels
- For recessed cards, a special card lock is available, suitable for use with profile 66-144
- **Scope of delivery:**
 - Card locks, eject mechanisms, windows and labels

3.1.1 Card Locks, Card Injector/Ejector Handles



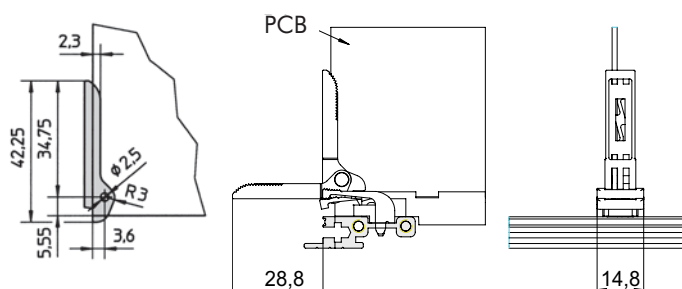
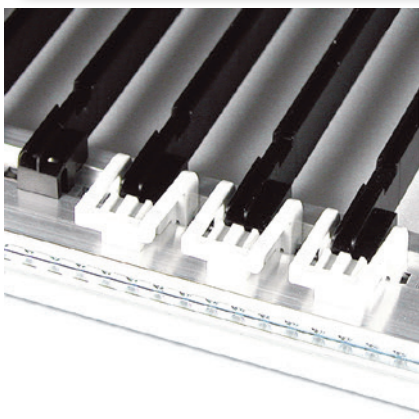
3.1.1 Card Locks, Card Injector/Ejector Handles

Description	Colour	Part-No.	
		1 pc.	10 pcs.
Card ejector handles		-	63-151
Card locks		61-126	63-153
Card locks to 66-144		61-144	63-163
Transparent window	Clear	-	63-155-1
	Red	-	63-155-4

- Other colours (yellow, green, blue, orange) upon request

3.1.1.1 Labels

Description	Part-No.
1 sheet A4 of 105	63-161



3: PCB Accessories

3.1.2 Card Handles



3.1.2 Card Handles

- Coloured, transparent handles which will accept labels facilitate the handling and identification of PCBs
- **Scope of delivery:**
 - 1 card handle
- Two screws M2.5 x 5 are needed per handle and have to be ordered separately

Description	Colour	Part-No.
Card handle	clear	1091-51
	red	1091-54
Cylindrical screw M2.5 x 5		5571-05
Torx cylinder head screw M2.5 x 5, size T8		5470-07

- Other colours (blue, yellow, green, orange) upon request

