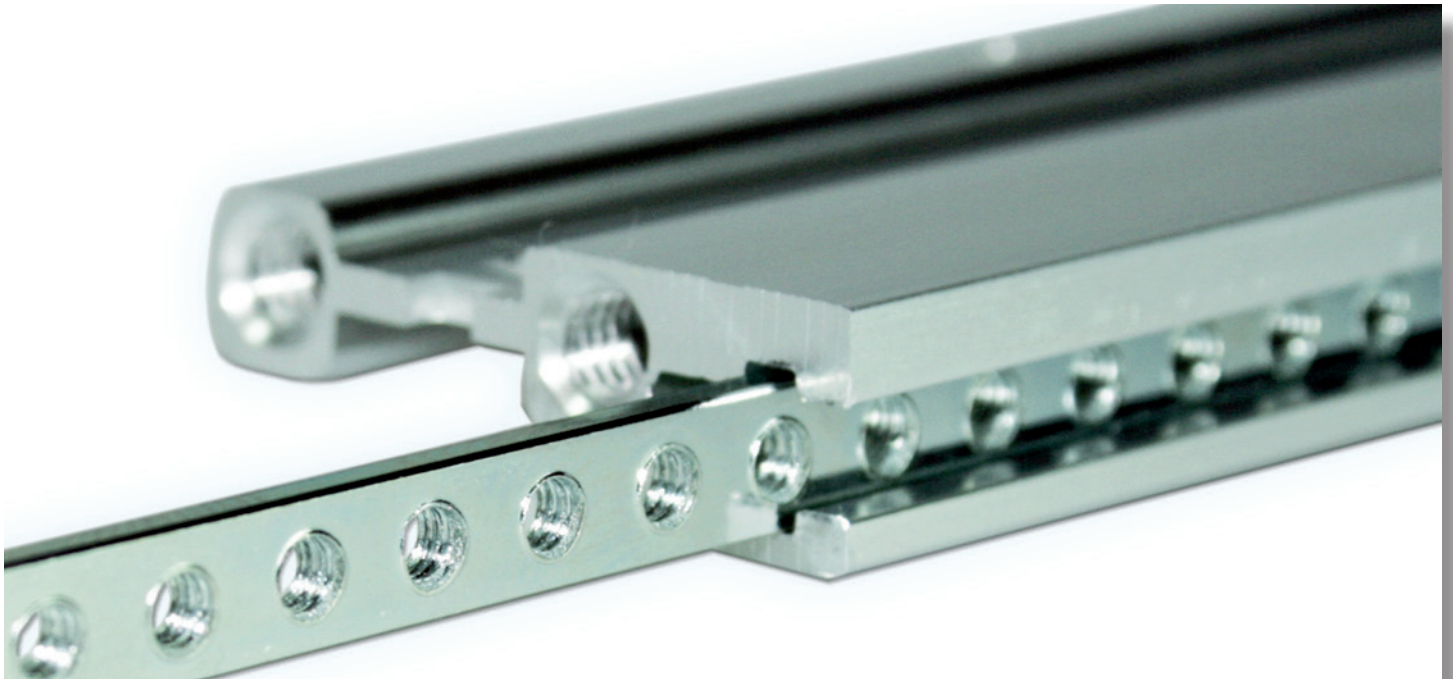


2: Assembly Material



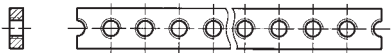
2.11 Tapped Strips

2.11.1 Tapped Strips M2.5

- 2 x 6 mm M2.5
- Steel, galvanised, passivated

| Description | Material | Part-No. |
|--------------|--------------------|----------|
| M2.5 4 HP | Steel, zinc-plated | 61-483 |
| M2.5 8 HP | Steel, zinc-plated | 61-475 |
| M2.5 10 HP | Steel, zinc-plated | 61-436 |
| M2.5 15 HP | Steel, zinc-plated | 61-476 |
| M2.5 18 HP | Steel, zinc-plated | 61-477 |
| M2.5 21 HP | Steel, zinc-plated | 61-459 |
| M2.5 27 HP | Steel, zinc-plated | 61-486 |
| M2.5 28 HP | Steel, zinc-plated | 61-458 |
| M2.5 32 HP | Steel, zinc-plated | 61-463 |
| M2.5 40 HP | Steel, zinc-plated | 61-465 |
| M2.5 42 HP | Steel, zinc-plated | 61-464 |
| M2.5 47 HP | Steel, zinc-plated | 61-461 |
| M2.5 60 HP | Steel, zinc-plated | 61-466 |
| M2.5 63 HP | Steel, zinc-plated | 61-469 |
| M2.5 81 HP | Steel, zinc-plated | 61-467 |
| M2.5 84 HP | Steel, zinc-plated | 61-468 |
| M2.5 2200 mm | Steel, zinc-plated | 61-532 |

| Description | Material | Part-No. |
|-------------|--------------------|----------|
| M2.5 43 HP | Steel, zinc-plated | 61-588 |
| M2.5 64 HP | Steel, zinc-plated | 61-587 |
| M2.5 85 HP | Steel, zinc-plated | 61-568 |



2: Assembly Material

2.11.2 Tapped Strips M2.5 1.8 x 5 mm

- 1.8 x 5 mm, M2.5
- Steel, galvanised, passivated

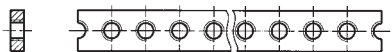
| Description | Material | Part-No. |
|--------------|--------------------|----------|
| M2.5 10 HP | Steel, zinc-plated | 61-470 |
| M2.5 18 HP | Steel, zinc-plated | 61-478 |
| M2.5 27 HP | Steel, zinc-plated | 61-479 |
| M2.5 42 HP | Steel, zinc-plated | 61-471 |
| M2.5 46 HP | Steel, zinc-plated | 61-460 |
| M2.5 63 HP | Steel, zinc-plated | 61-472 |
| M2.5 81 HP | Steel, zinc-plated | 61-473 |
| M2.5 84 HP | Steel, zinc-plated | 61-474 |
| M2.5 2200 mm | Steel, zinc-plated | 61-534 |

| Description | Material | Part-No. |
|-------------|--------------------|----------|
| M2.5 43 HP | Steel, zinc-plated | 61-584 |
| M2.5 64 HP | Steel, zinc-plated | 61-585 |
| M2.5 85 HP | Steel, zinc-plated | 61-586 |

2.11.3 Tapped Strips M3

- 2 x 6 mm M3
- Steel, galvanised, passivated

| Description | Material | Part-No. |
|------------------|--------------------|------------|
| M3 10 HP | Steel, zinc-plated | 61-435 |
| M3 28 HP | Steel, zinc-plated | 61-456 |
| M3 42 HP | Steel, zinc-plated | 61-454 |
| M3 63 HP | Steel, zinc-plated | 61-455 |
| M3 81 HP | Steel, zinc-plated | 61-450 |
| M3 84 HP | Steel, zinc-plated | 61-453 |
| M3 L = 427.78 mm | Steel, zinc-plated | 61-242-443 |
| M3 L = 443.02 mm | Steel, zinc-plated | 61-242-428 |

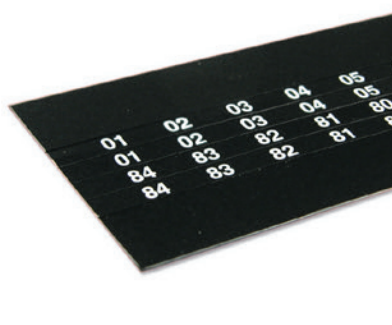


2.12 Label Strips

- Numbering of HP-steps
- Mounting onto front extrusions
- Black plastic, PVC
- Numbering white
- Self-adhesive
- **Scope of delivery:**
 - 1 label strip, consisting of 4 single tapes

2.12.1 Label Strips

| Numbering | Length | | Scope of Delivery | Part-No. |
|-------------|--------|-------|---------------------------|----------|
| | mm | inch | | |
| 01-42/42-01 | 218.1 | 8.58 | 2 pcs. each (up and down) | 63-142 |
| 01-63/63-01 | 324.8 | 12.78 | 2 pcs. each (up and down) | 63-143 |
| 01-81/81-01 | 416.4 | 16.39 | 2 pcs. each (up and down) | 63-043 |
| 01-84/84-01 | 431.6 | 16.99 | 2 pcs. each (up and down) | 63-046 |

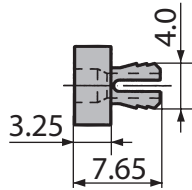


2: Assembly Material

2.13 Insulation

2.13.1 Backplane Insulating Spacer

| Description | Material | Part-No. |
|-------------|----------|----------|
| Ø 7 (M2.5) | POM | 61-088 |



2.13.2 Insulating Strips

| Description | Material | Part-No. |
|-------------|----------|-----------|
| 28 HP | ABS | 66-901-25 |
| 42 HP | ABS | 66-901-20 |
| 63 HP | ABS | 66-901-21 |
| 81 HP | ABS | 66-901-22 |
| 84 HP | ABS | 66-901-23 |

