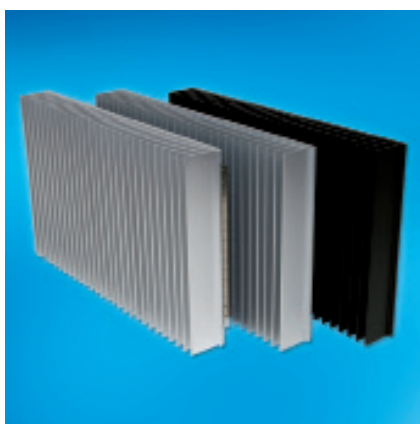
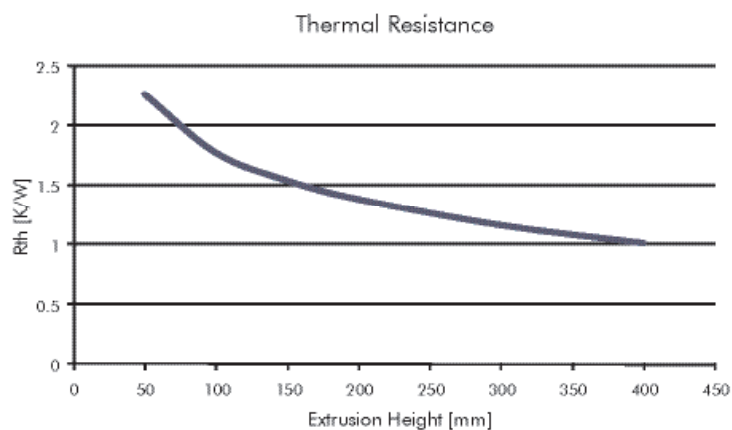


Heat Sink Front Panels

- For sub racks and enclosures
- Width 42 HP
- Cooling fins in pitch of 1½ HP
- Aluminium anodised or clear passivated
- EMC version with mounted brackets for slid in of EMC gaskets 81-062-xx
- Thermal resistance see diagram
- Customised versions on request
- **Scope of delivery:**
 - 1 heat sink front panel
- Assembly material see below
- EMC gasket see below



Heat Sink Front Panels

| Description | Surface | Width | Height | Part-No. |
|---------------------------|------------------|-------|--------|-----------|
| Heat sink front panel | Clear anodised | 42 HP | 3 U | 66-100-71 |
| Heat sink front panel | Black anodised | 42 HP | 3 U | 66-100-72 |
| EMC heat sink front panel | Clear passivated | 42 HP | 3 U | 21F342 |

Assembly Material

- Per heat sink front panel 6 screws are needed

| Description | Part-No. 1 pc. |
|--|-------------------|
| Torx cylinder head screw M2.5 x 10, size T8 | 5470-09 |
| Cross recessed cylinder head screw M2.5 x 10 | 5325-10 |



EMC Gasket

- Stainless steel

| For Height | Length | | Part-No. 1 pc. |
|------------|--------|------|-------------------|
| | mm | inch | |
| 3 U | 101.6 | 4.00 | 81-062-03 |

Drawing Heat Sink Front Panel 66-100-71

