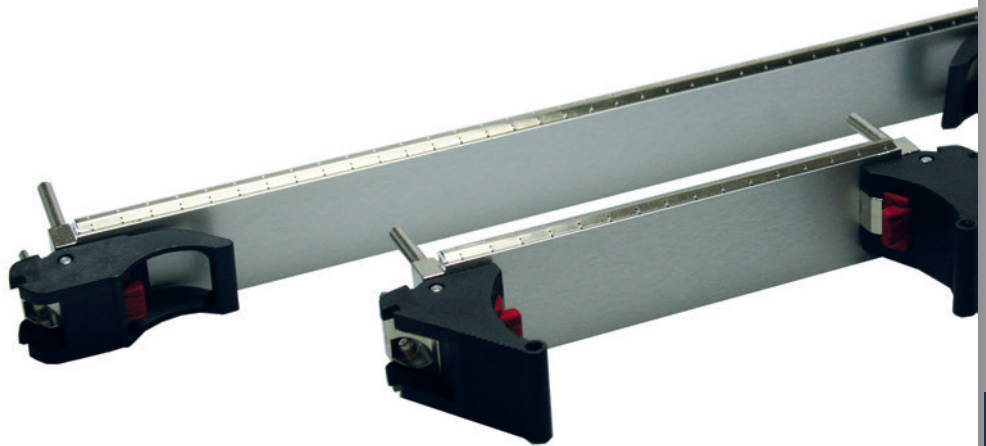


## 2: Front Panels for Plug-In Units



### 2.4 Plug-In Units acc. to VPX

#### 2.4.1 EMC Front Panels Aluminium acc. VPX

- Excellent EMC shielding
  - EMC gasket can be inserted on the profile
  - In accordance with VPX specifications
  - Aluminum extrusion, anodized front, side and rear: conductive
  - Front panels with 2 cut-outs (bottom + top); 66-515-43-VPX only 1 cut-out (bottom)
- **Scope of delivery:**
    - 1 EMC front panel, aluminum
    - 66-515-43-VPX additionally 1 card holder and assembly material
    - EMC gasket and injector handles must be ordered separately
    - For more injector handles, see Elmaset, Chapter C\_3



Description	Part-No. 3 U	Part-No. 3 U, 1 cut-out	Part-No. 6 U
VPX profile front panel, 5 HP	66-515-23-VPX	66-515-43-VPX	66-515-26-VPX
EMC gasket (stainless steel)	81-062-03	81-062-03	81-062-06
Ergonomic injector handle bottom	81-096	81-096	81-096
Ergonomic injector handle top	81-095	-	81-095
Telecom injector handle bottom	81-206	81-206	81-206
Telecom injector handle top	81-205	-	81-205
10 pcs. Microswitch for injector handle	81-088-1	81-088-1	81-088-1

Contact us for the mechanical processing and imprinting of your VPX front panels.

**Use Elma's front panel center for the processing, coloring, digital and anodized digital aluminium printing and installation of your operating unit.**