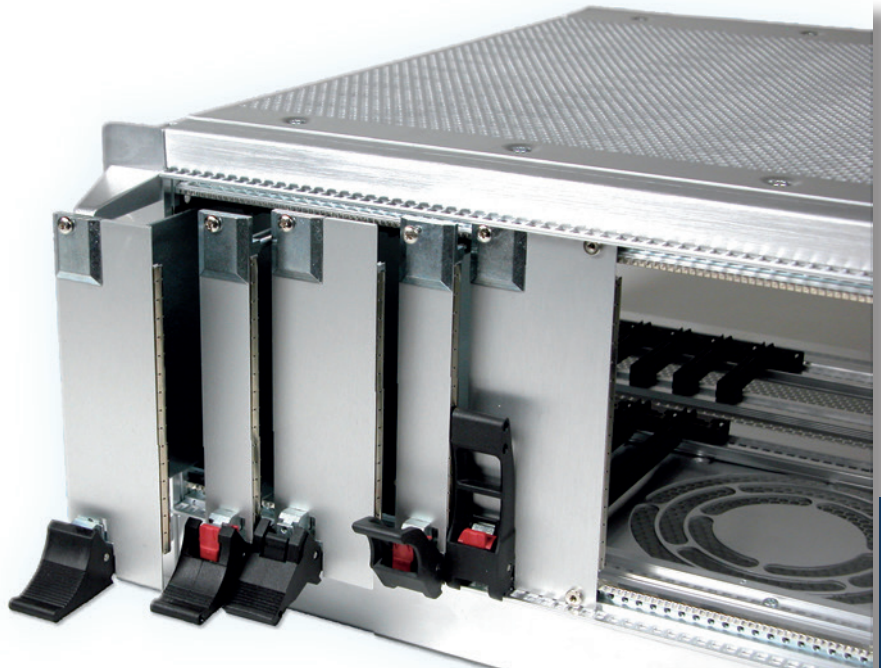


2: Front Panels for Plug-In Units



2.3 Plug-In Units acc. to IEEE

2.3.1 EMC Front Panels Aluminium with EMC Gasket acc. IEEE

- Excellent EMC shielding
- Immune to snagging
- EMC-gasket slid onto the extrusion
- **Scope of delivery:**
 - EMC front panel, incl. press-in bushes M2.5 (size ≥ 10 HP)
- EMC-gasket see 2.3.1.1
- Handle has to be ordered separately, see 2.3.5
- Front panel screw (size ≥ 10 HP), see 2.3.1.2

2.3.1.1 Front Anodised, Rear Conductive (2 cutouts)

- With 2 cutouts (bottom + top)

Width	Part-No. 3 U	Part-No. 6 U
4 HP	66-514-23	66-514-26
5 HP	66-515-23	66-515-26
6 HP	66-516-23	66-516-26
7 HP	66-517-23	66-517-26
8 HP	66-518-23	66-518-26
9 HP	66-519-23	66-519-26
10 HP	66-520-23	66-520-26
12 HP	66-522-23	66-522-26
14 HP	66-534-23	66-534-26

2.3.1.2 Front Anodised, Rear Conductive (1 cutout)

- With 1 cutout (bottom)
- Incl. pressed-in centring pin and bush M2.5 (top)
- Incl. cutout for mounting of card holder 61-156 (top) with screw 5322-08

Width	Part-No. 3 U
4 HP	66-514-43
5 HP	66-515-43
6 HP	66-516-43
8 HP	66-518-43
10 HP	66-520-43
12 HP	66-522-43
14 HP	66-534-43



2: Front Panels for Plug-In Units

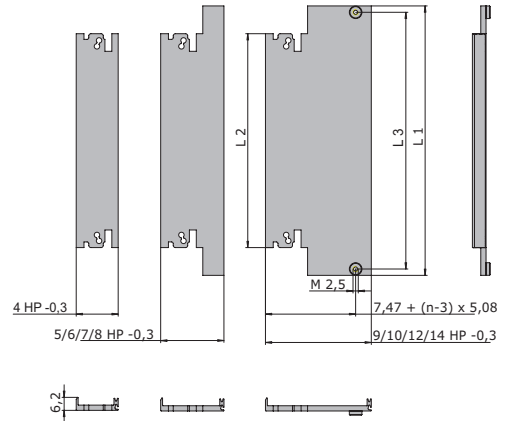
EMC-Gasket (Stainless Steel)

Unit	Part-No. 3 U	Part-No. 6 U
1 pc.	81-062-03	81-062-06

Front Panel Screw

- For EMC front panels size ≥ 9 HP = 2 additional screws are needed

Description	Part-No.
Cross recessed rounded head screws M2.5 x 12.7	61-287
Torx screws M2.5 x 11.3, size T8	5443-08



Dimensions

Height	L1 mm	L1 inch	L2 mm	L2 inch	L3 mm	L3 inch
3 U	128.55	5.06	102.05	4.01	122.50	4.82
6 U	261.90	10.31	235.40	9.27	255.85	10.07

2: Front Panels for Plug-In Units



2.3.2 Injector/Ejector Handles acc. to IEEE

Type			Mounting	ESD Pin	Colour	Part-No.
Ergonomic			Bottom	With ESD-pin	Black	81-076
Ergonomic			Top	With ESD-pin	Black	81-075
Ergonomic			Bottom	Without ESD-pin	Black	81-076-01
Ergonomic			Top	Without ESD-pin	Black	81-075-01
Ergonomic	Hot Swap		Bottom	With ESD-pin	Black	81-096
Ergonomic	Hot Swap		Top	With ESD-pin	Black	81-095
Ergonomic	Hot Swap		Bottom	Without ESD-pin	Black	81-096-01
Ergonomic	Hot Swap		Top	Without ESD-pin	Black	81-095-01
Ergonomic	Hot Swap	Offset	Bottom	With ESD-pin	Black	81-185
Ergonomic	Hot Swap	Offset	Top	With ESD-pin	Black	81-184
Classic			Bottom	With ESD-pin	Black	81-261
Classic			Top	With ESD-pin	Black	81-260
Classic		Offset	Bottom	With ESD-pin	Black	81-161
Classic		Offset	Top	With ESD-pin	Black	81-160
Classic	Hot Swap		Bottom	With ESD-pin	Black	81-256
Classic	Hot Swap		Top	With ESD-pin	Black	81-255
Classic	Hot Swap	Offset	Bottom	With ESD-pin	Black	81-156
Classic	Hot Swap	Offset	Top	With ESD-pin	Black	81-155
Telecom	Hot Swap		Bottom	With ESD-pin	Black	81-206
Telecom	Hot Swap		Top	With ESD-pin	Black	81-205
Telecom	Hot Swap		Bottom	Without ESD-pin	Black	81-206-01
Telecom	Hot Swap		Top	Without ESD-pin	Black	81-205-01
Telecom	Hot Swap	Offset	Bottom	With ESD-pin	Black	81-189
Telecom	Hot Swap	Offset	Top	With ESD-pin	Black	81-188
Telecom long	Hot Swap		Bottom	With ESD-pin	Black	81-215
Telecom long	Hot Swap		Top	With ESD-pin	Black	81-214
Telecom long	Hot Swap	Offset	Bottom	With ESD-pin	Black	81-116
Telecom long	Hot Swap	Offset	Top	With ESD-pin	Black	81-117
Microswitch						81-088-1 (10 pcs.)

For more information refer to chapter 3 "Handles".

2: Front Panels for Plug-In Units

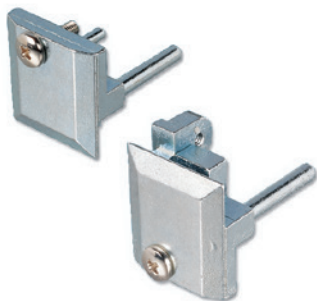
2.3.3 Card Holder and Coding Pins acc. to IEEE

• Scope of delivery:

- End piece card holder (zinc die-cast, nickel plated)
- Assembly material (screws M2.5 for fixing of front panel/card holder/printed board)

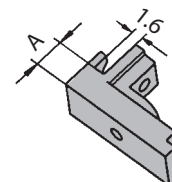
2.3.3.1 Card Holder/End Piece with ESD Pin

Description	Part-No.
Top	81-018
Bottom	81-019



2.3.3.2 Card Holder/End Piece without ESD Pin

Description	Part-No.
Top	81-018-01
Bottom	81-019-01



2.3.3.3 Middle Part

- Usable for all front panels
- For positioning and fixing of 6 U and 9 U cards, card thickness 1.6 mm
- Material: Plastic UL94 V-0

Description	A		Part-No.
	mm	inch	
Aluminium 2.5 mm	2.5	0.10	61-960

Assembly Material

Description	Part-No.
PT-countersunk, 2.5 x 6	5534-06

2.3.3.4 Coding Pins

- Acc. to IEC 60297-3-103
- Plastic, UL94 V-0
- Can be rotated in 4 positions

Description	Part-No.
Grey	81-054-02
Dark red	81-054-06
Black	81-054-04

