

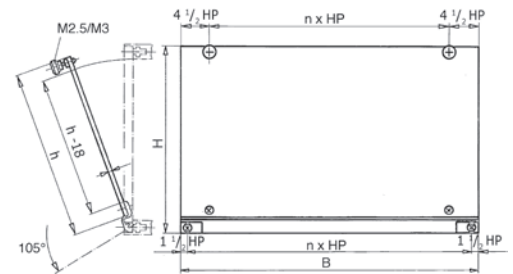
1: Front Panels for Sub Racks and Enclosures



1.4 Hinged Front Panels

1.4.1 Top / Bottom-Hinged Front Panel

- Hinges are attached to the front extrusions of the sub rack or case
- Aluminium 2.5 mm, clear anodised (non-conductive)
- **Scope of delivery:**
 - Front panel
 - Hinge extrusion
 - Assembly material M2.5, incl. hinges



1.4.1 Top/Bottom-Hinged Front Panel

Width	Part-No. 3 U	Part-No. 4 U	Part-No. 6 U
84 HP	25N384-19	25N484-19	25N684-19

Dimensions

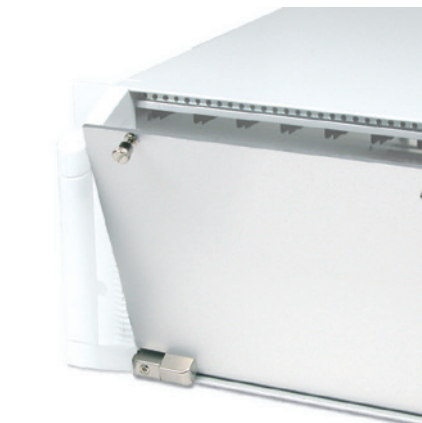
Nominal Width			Width B	
HP	mm	inch	mm	inch
84 HP	426.72	16.80	426.5	16.79

Nominal Height		Height H		Height h	
U	mm	inch	mm	inch	inch
3 U	128.7	5.07	117	4.61	
4 U	173.15	6.81	161.4	6.35	
6 U	262.05	10.31	250.3	9.85	

1: Front Panels for Sub Racks and Enclosures

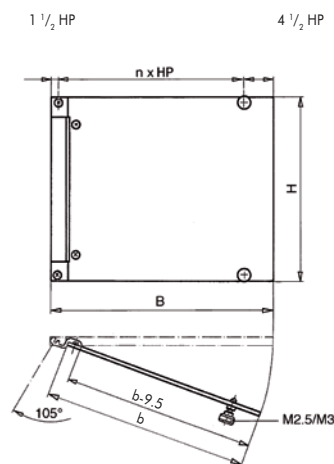
1.4.2 EMC Top / Bottom-Hinged Front Panel

- Width: 84 HP
- Offers optimum protection from electromagnetic interference
- Aluminium 2.5 mm, front anodised, rear conductive
- **Scope of delivery:**
 - EMC front panel
 - Hinge extrusions
 - Assembly material M2.5, incl. hinges
 - EMC gaskets



1.4.2 EMC Top / Bottom-Hinged Front Panel

EMC Level	Part-No. 3 U	Part-No. 6 U
Advanced	25C384-11	-
Superior	-	25D684-11



1.4.3 Side-Hinged Front Panel

- Aluminium 2.5 mm, clear anodised (non-conductive)
- **Scope of delivery:**
 - Front panel
 - Hinge extrusion
 - Assembly material M2.5, incl. hinges



1.4.3 Side-Hinged Front Panel

Width	Part-No. 3 U	Part-No. 6 U
84 HP	25N384-29	25N684-29

Other widths and heights available on request

Dimensions

Nominal Width			Width B		Width b	
HP	mm	inch	mm	inch	mm	inch
84 HP	426.72	16.80	426.5	16.79	414.3	16.31

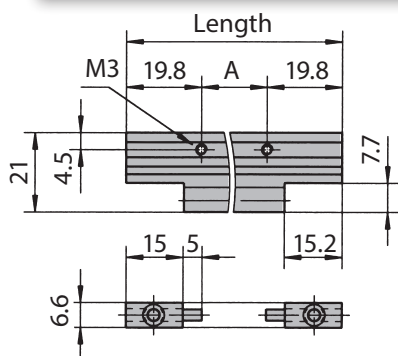
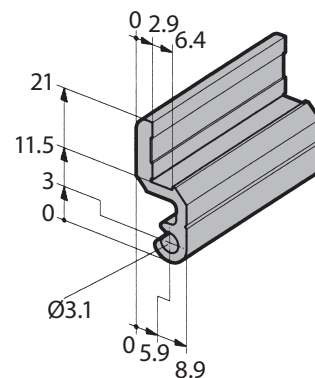
Nominal Height	Height H	
U	mm	inch
3 U	128.7	5.06
6 U	262.05	10.31

Use Elma's front panel service for machining and screen printing of your panels!

1: Front Panels for Sub Racks and Enclosures

1.4.4 Accessories

- To build up customised hinged front panels

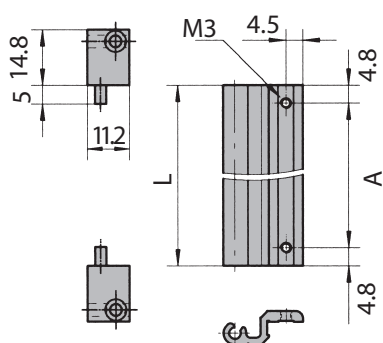


1.4.4.1 Hinge Extrusions for Top/Bottom-Hinged Front Panels

Width	A mm	A inch	L mm	L inch	Part-No.
42 HP	172.9	6.80	212.5	8.36	66-230-27
63 HP	279.5	11.00	319.1	12.56	66-230-28
84 HP	386.2	15.20	425.8	16.76	66-230-26

1.4.4.2 Assembly Material incl. Hinge Parts for Top/Bottom-Hinged Front Panels

Description	Part-No.
Incl. screws, tapped strips, nuts in thread M2.5	81-124



1.4.4.3 Hinge Extrusions for Side-Hinged Front Panels

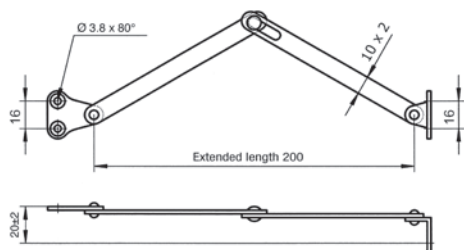
Height	A mm	A inch	L mm	L inch	Part-No.
3 U	89.1	3.50	98.7	3.88	66-230-33
4 U	133.6	5.26	143.2	5.63	66-230-34
6 U	222.5	8.76	232.1	9.13	66-230-36
7 U	266.9	10.50	276.5	10.88	66-230-37

1.4.4.4 Assembly Material incl. Hinge Parts for Side-Hinged Front Panels

Description	Part-No.
Incl. screws, tapped strips, nuts in thread M2.5	81-125

1.4.4.5 Panel Stay

- Scope of delivery:
 - 2 pcs. panel stay
 - Assembly material



Description	Part-No.
Set of panel stay complete	63-242