

# 19" enclosure type 38

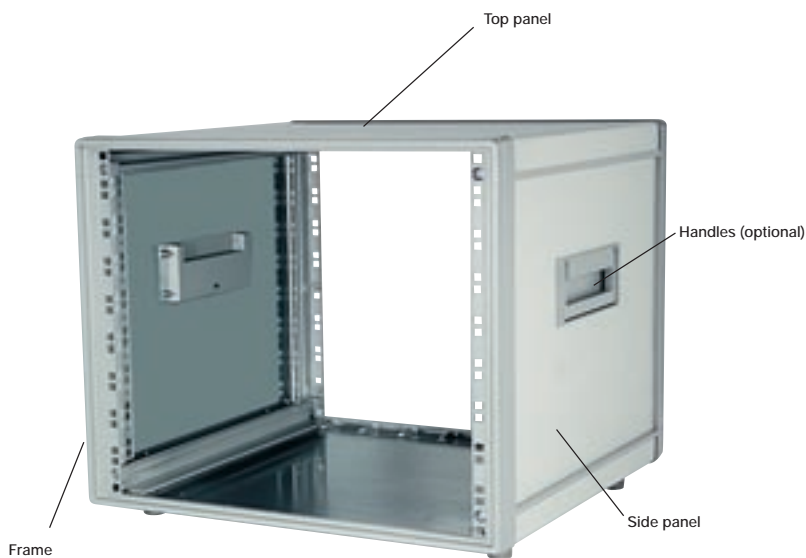
## Basic construction

- 19" enclosure case, can be used as desktop or as stand-alone cabinet
- Simple assembly
- Dimensions according to IEC 60297
- Safety connections according to VDE 0100/IEC 380

### Material and scope of delivery

- Frame parts are in aluminium powder-coated, color stone-grey (RAL 7030)
- Bottom, top and side panel in hot-galvanized steel powder-coated, color light-grey (RAL 7035)
- Handles are in aluminium powder-coated, color stone-grey (RAL 7030)
- Feet
- Fixing material

Complete case are in kit form



### Basic construction with handles



Height	Depth	
	420 mm 16.53 inch	520 mm 20.47 inch
6U	38-10623-3.	38-10625-3.
7U	38-10723-3.	38-10725-3.
8U	-	38-10825-3.
9U	38-10923-3.	38-10925-3.
10U	38-11023-3.	38-11025-3.
12U	38-11223-3.	38-11225-3.
15U	-	38-11525-3.

### Basic construction without handles



Height	Depth			
	320 mm 12.59"	420 mm 16.53"	520 mm 20.47"	620 mm 24.40"
3U	38-00321-3.	38-00323-3.	-	-
4U	-	38-00423-3.	38-00425-3.	38-00426-3.
6U	38-00621-3.	38-00623-3.	38-00625-3.	38-00626-3.
7U	-	38-00723-3.	38-00725-3.	-
8U	-	-	38-00825-3.	-
9U	-	38-00923-3.	38-00925-3.	38-00926-3.
10U	-	38-01023-3.	38-01025-3.	-
12U	-	-	38-01225-3.	-
15U	-	-	38-01525-3.	-

38-xxxx-3 . for version



0 = bottom panel unperforated

1 = bottom panel perforated

### Rear panel with ventilation slots

Hot-galvanized steel, powder-coated, color light-grey (RAL 7035)



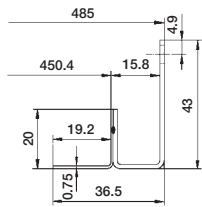
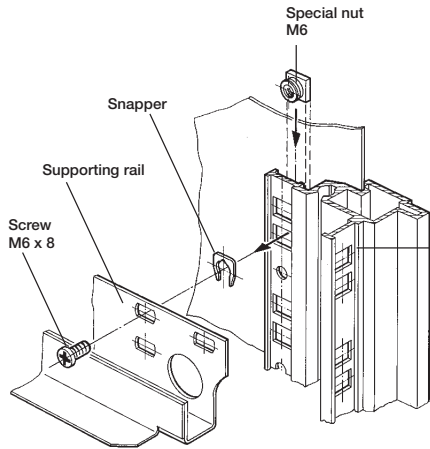
Height	Part No.
3U	38-260-31
4U	38-261-31
6U	38-263-31
7U	38-264-31
8U	38-265-31
9U	38-266-31
10U	38-267-31
12U	38-269-31
15U	38-272-31

### Fixing material

Part	Part No.
Set for 1 rear panel	63-439

# 19" enclosure type 38

## Supporting rails



## To carry the weight of heavy mounted units

Case depth T mm/inch	Supporting rail 1 piece
320/12.59	49-760
420/16.53	49-763
520/20.47	49-761
620/24.40	49-764

Load rating (static) up to 60 kg/132 lb (US)/pair

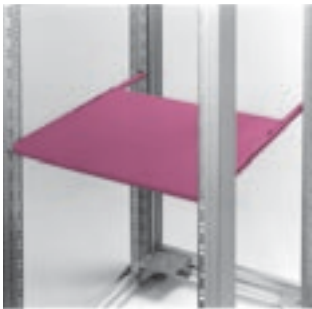
## Fixing material

Screw M6x8, snapper, special nut M6

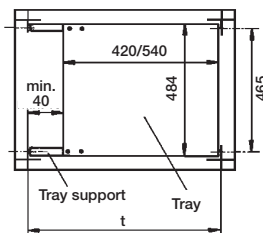
Part	Part No.
Set for 2 supporting rails (totally 4 screw, 4 snapper, 4 nut)	63-438

## Universal component carrier

Zinkor panel 1.5 mm



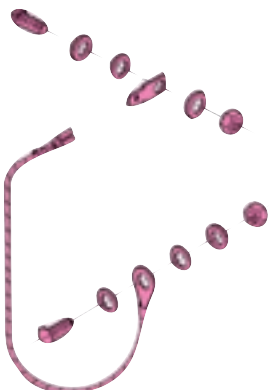
Cabinet depth t	Mounting surface B x T	Part No.
470–570 mm 18.50–22.44"	484 x 420 mm 19.05 x 16.53"	49-425
590–690 mm 23.22–27.16"	484 x 540 mm 19.05 x 21.25"	49-426



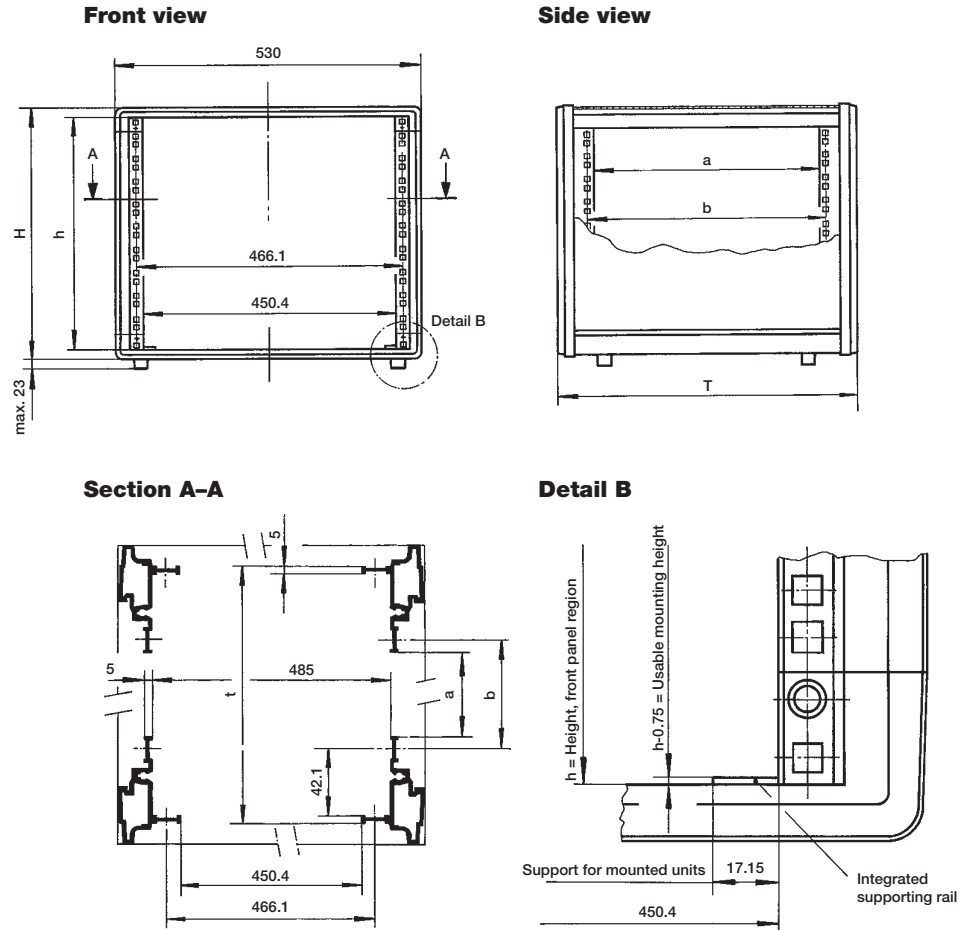
Load rating (static) up to 60 kg/132 lb (US)/pair

Part	Part No.
Earthing set for 19" enclosure incl. rear panel	38-040

## Earthing set



**Line drawings**



	Heights mm/inch			
	H mm	inch	h	inch
3U	184.85	7.27	134.85	5.30
4U	209.30	8.24	179.30	7.05
6U	298.20	11.74	268.20	10.55
7U	342.65	13.49	312.65	12.30
8U	387.10	15.24	357.10	14.05
9U	431.55	16.99	401.55	15.80
10U	476.00	18.74	446.00	17.55
12U	564.90	22.24	534.90	21.05
15U	698.25	27.49	668.25	26.30

Depth T	Depth					
	t mm	inch	a mm	inch	b mm	inch
320 mm 12.59"	292.0	11.49	181.8	7.15	197.8	7.78
420 mm 16.53"	392.0	15.43	281.8	11.09	297.8	11.72
520 mm 20.47"	492.0	19.37	381.8	15.03	397.8	15.66
620 mm 24.40"	592.0	23.30	481.8	18.96	497.8	19.59