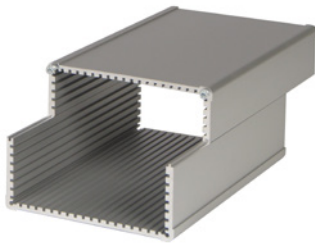
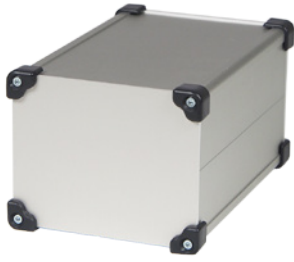


12: Microbox 36 C

B





12.1 Complete Microbox 36 C

B | 12_3

12.1.1 Microbox 36 C Set

B | 12_3

12.2 Product selection table Microbox 36 C

B | 12_4

12.2.1 Standard versions

B | 12_4

12.2.2 Versions with wall brackets on one half-shell

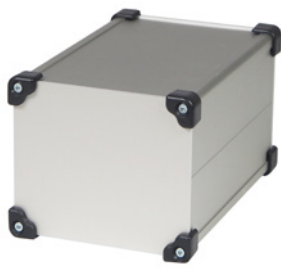
B | 12_4

12.2.3 Colored polyamide plastic corners

B | 12_4

12: Microbox 36 C

12.1 Complete Microbox 36 C



12.1.1 Microbox 36 C Set

- Scope of delivery:
 - 2 case half-shells
 - 2 front panels
 - Fixing material (8 countersunk screws M3x6, Torx T10)

Colored plastic corners with long countersunk head screws can also be ordered separately.

Main features:

- Two aluminum extrusion half-shells, which can be mounted using the front/rear panels
- The enclosure sections have grooves every 5.08mm for holding printed circuit boards or mounting plates
- An extrusion with molded wall brackets is also available
- The extrusions have a recessed area for foils and membrane keyboards
- Plastic corners in four colors for protection or as a design element
- 100mm horizontal width for eurocards

Technical characteristics:

- Basic case: clear anodized aluminum, cutting edges raw
- Front panels: 2.0mm aluminum, clear, anodized, cutting edges raw
- Degree of protection: IP40

Possible customizations:

- Color anodized case
- Individual finishing of case and front/rear panels
- Cases in custom lengths
- Complete case powder-coated in different colors

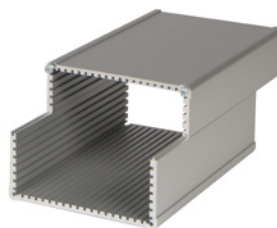
Typical applications:

- Small individual measuring instruments
- Test adapters
- Robust printed circuit board protection
- Portable test equipment
- Wall-mounted controls

Microbox 36 C with wall bracket



Microbox 36 C with two-half shells



12: Microbox 36 C

12.2 Product selection table Microbox 36 C

12.2.1 Standard versions

Height mm	Width mm	Depth mm	Extrusion combination	Part-No.
46	107	164	2 + 2	36-20002
56	107	164	2 + 3	36-30002
66	107	164	3+ 3	36-40003
66	107	164	2 + 4	36-40003
76	107	164	3 + 4	36-50002
86	107	164	4 + 4	36-60002

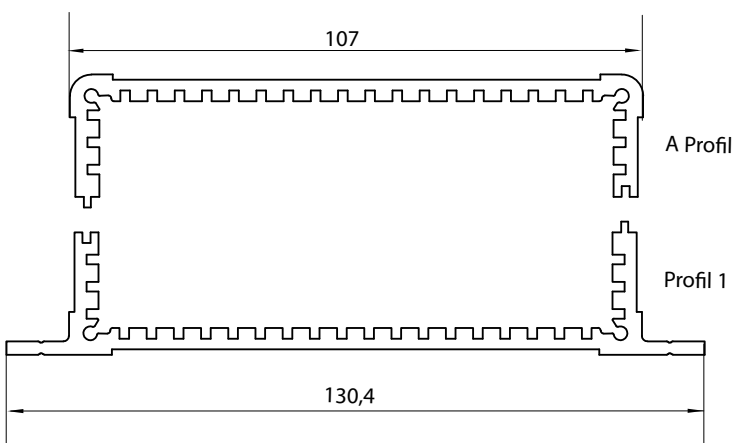
12.2.2 Versions with wall brackets on one half-shell

Height mm	Width mm	Depth mm	Extrusion combination	Part-No.
46	107 / 130,4	164	1 + 2	36-20012
56	107 / 130,4	164	1 + 3	36-30012
66	107 / 130,4	164	1 + 4	36-40012

12.2.3 Colored polyamide plastic corners

Description	Part-No.
Corner protection orange	36-00001-01
Corner protection night blue	36-00001-02
Corner protection anthracite	36-00001-03
Corner protection green	36-00001-04
Countersunk screw M3 x 8 for mounting the plastic corners has to be ordered separately	5472-03

Microbox 36C cross section



Combination options

Extrusion	Height mm
A extrusion 2	23
A extrusion 3	33
A extrusion 4	43

Extrusion	Height mm
Extrusion 1	23