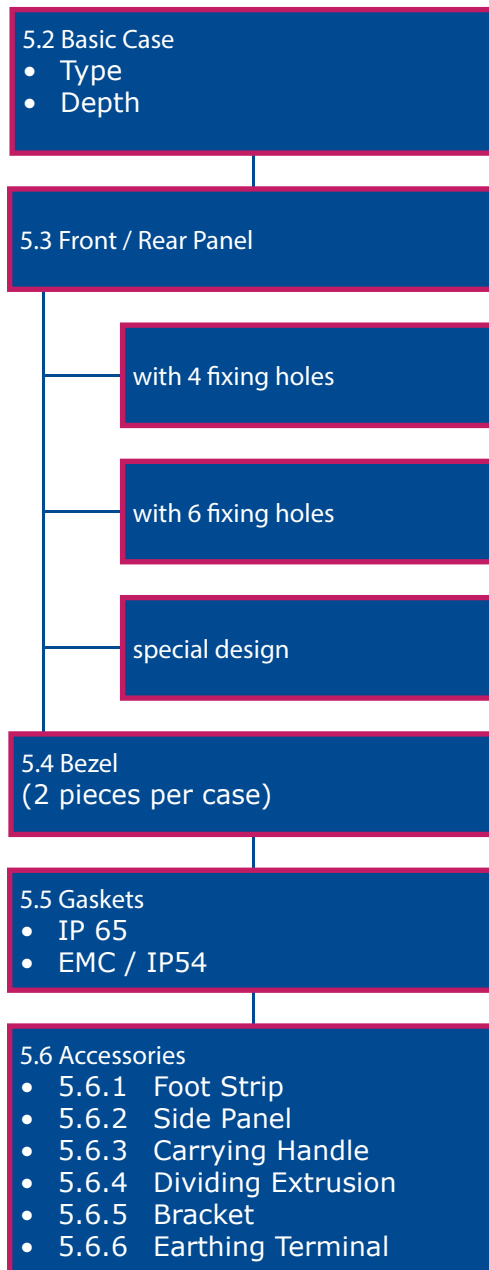
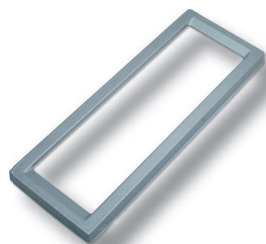
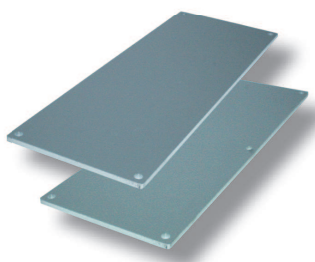


9.1.2 Configuration

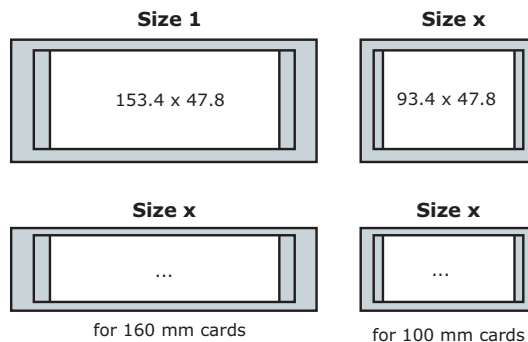
- The flexible way of setting your Minibox 34 up:



9.2 Basic Case

- Extruded aluminium
- Powder coated
- Scope of delivery:
 - 1 Case extrusion

CASES AND SIZES



5.2.1 Basic Case

Case size	Colour	Depth			
		100 mm 3.93"	160 mm 6.30"	220 mm 8.66"	233.4 mm 9.18"
1	white aluminium	66-350-0100-00	66-350-0160-00	66-350-0220-00	66-350-0233-00

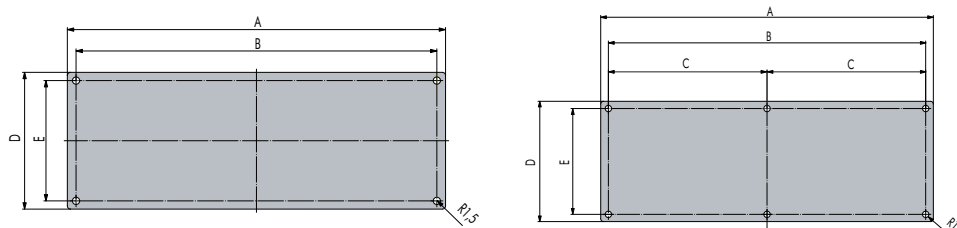


9.3 Front / Rear Panel

- The 2.5 mm (0.9") thick front panels of anodised aluminium serve both as front and rear panels
- They are screwed to the ends of the case profiles to give the snap-on bezel the required stability
- The panels are available with perforations on request
- Front panels with 6 fixing holes have to be used for higher EMC level or in combination with IP65 and IP54/EMC gaskets
- Scope of delivery:
 - 1 front/rear panel
- Note: for one Minibox 34 two panels have to be ordered
- Torque of mounting screws to ensure IP protection: 0.90 Nm - 1.00 Nm
- 4 or 6 screws are used per panel, see 5.3.4

9.3.1 Front / Rear Panel

Case size	With 4 fixing holes	With 6 fixing holes
1	34-11000-00	34-11001-00



Case size	A		B		C		D		E	
	mm	inch	mm	inch	mm	inch	mm	inch	mm	inch
1	177.1	6.97	168.8	6.65	84.4	3.32	64	2.52	56.3	2.22

9: Minibox 34

9.3.2 Rear Panel for DIN-Rail Snap-on Mounting

- Incl. riveted steel DIN-clip
- Suitable for top hat rails 35 mm, acc. to IEC 60715 or EN 50022
- Scope of delivery:
 - 1 rear panel
- Per rear panel 4 screws are needed, see 9.3.4



9.3.2 Rear Panel for DIN-Rail Snap-on Mounting

Description	Part-No.
Rear Panel for DIN-Rail Snap-on Mounting	34-11003-00

9.3.3 Rear Panel for Wall Mounting

- For direct wall mounting of Minibox 34
- Scope of delivery:
 - 1 rear panel
- Per rear panel 4 screws are needed
- Using these rear panels for wall mounting no bezel can be mounted on this side



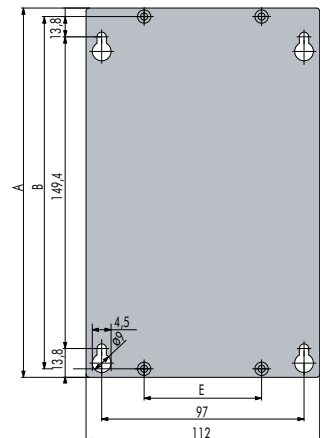
9.3.3 Rear Panel for Wall Mounting

Description	Part-No.
Rear Panel for wall mounting	34-11002-00

Assembly Material

Description	Part-No.
Countersunk screw M3 x 10, Torx T10	5470-23

Multiples of 10 must be ordered; MOQ 10pcs.



Case size	A		B		E	
	mm	inch	mm	inch	mm	inch
1	177.1	6.97	168.8	6.65	56.3	2.22

9: Minibox 34

9.3.4 Assembly Material for Front / Rear Panels

- Screws for mounting front / rear panel onto case extrusion
- Scope of delivery:
 - 1 cylindrical screw



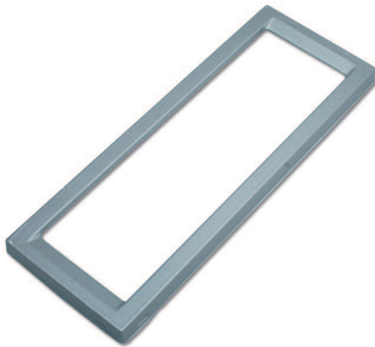
9.3.4 Assembly Material for Front / Rear Panels

Description	Part-No.
Cylindrical screw M3 x 12, Torx T10	5470-05

Multiples of 10 must be ordered; MOQ 10pcs.

9.4 Bezel

- Bezels are snapped-on front and rear side
- Bezels have a additional design function
- Screws used for assembling the case are not visible after mounting bezels
- Plastic, ABS
- Scope of delivery:
 - 1 plastic bezel
- Note: for 1 Minibox 34 two bezels have to be ordered



9.4 Bezel

Case size	Silver
1	34-12000-00

9.5 Gaskets

9.5.1 Gaskets IP65

- Matching the case contour
- Matching the front / rear panels with 6 fixing holes
- Foamed plastic PVC grey, UL94 V-0
- Self-adhesive seals
- Scope of delivery:
 - 1 gasket IP65
- For one Minibox 34 two gaskets have to be ordered
- For sealing the two middle screws plastic washers are used. These have to be ordered separately

9.5.1 Gaskets IP65

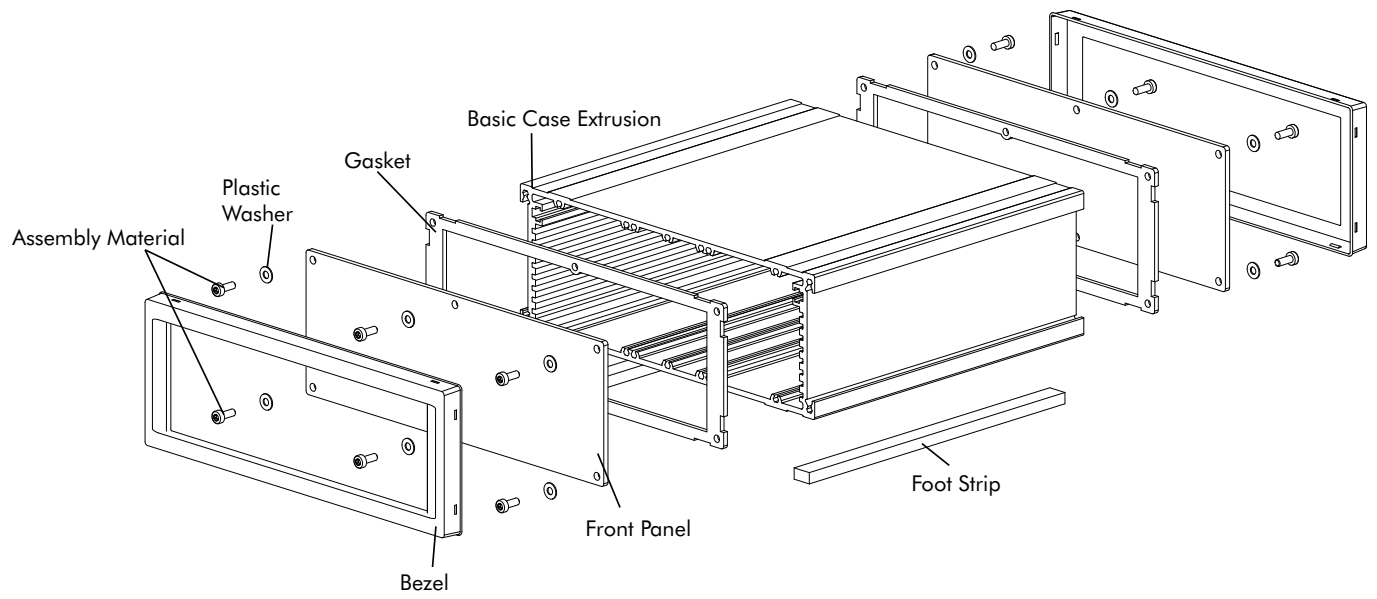
Description	Part-No.
Gasket IP65, Size 1	34-13001
Washer plastic PA	5643-21

Multiples of 10 must be ordered; MOQ 10pcs.



9: Minibox 34

Minibox 34 with IP65 **Gaskets and Washers**



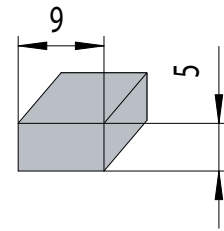
B



9.6 Accessories

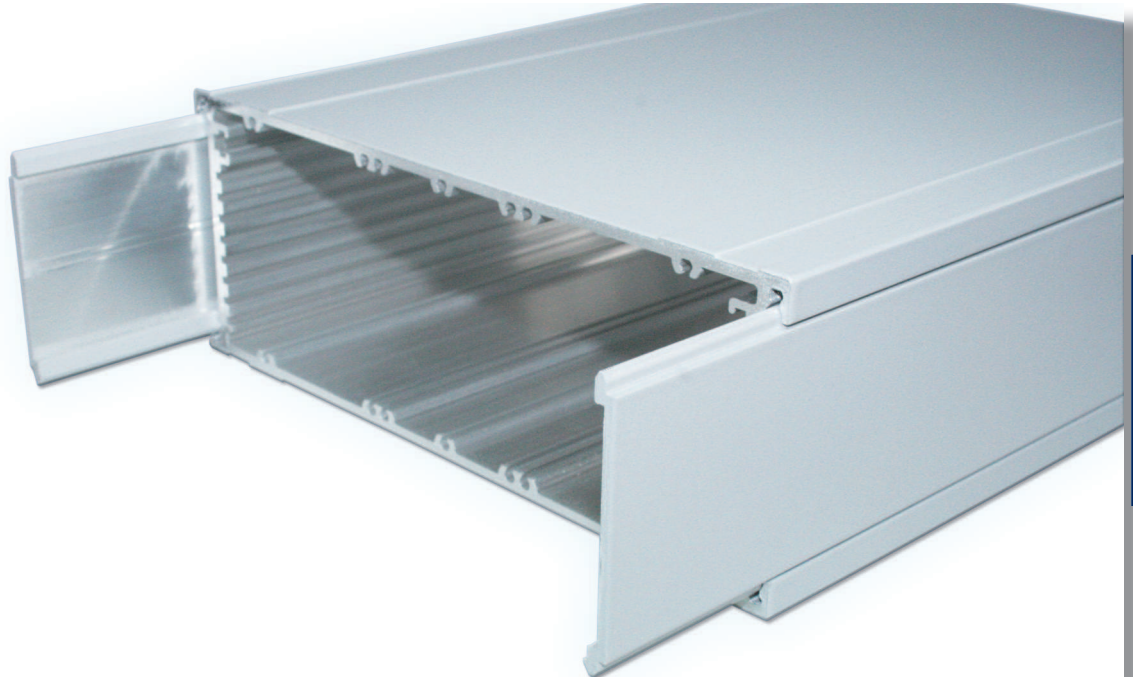
9.6.1 Foot Strip

- The foot strips allow the case to be slip resistant
- Delivered in meters and can be cut to size of the case
- Matches the designated cavity
- Foam pad CR
- Self-adhesive
- 9 x 5 mm
- Scope of delivery:
 - 1 piece / reel foam pad
- Per case 2 foot strips have to be mounted. Recommended foot strip length is 10 mm shorter than the case's depth



9.6.1 Foot Strip

Description	Part-No.
Foot strip, foam pad CR, length 100 cm	34-13010-100
Foot strip, foam pad CR, length 1000 cm	34-13010-1000



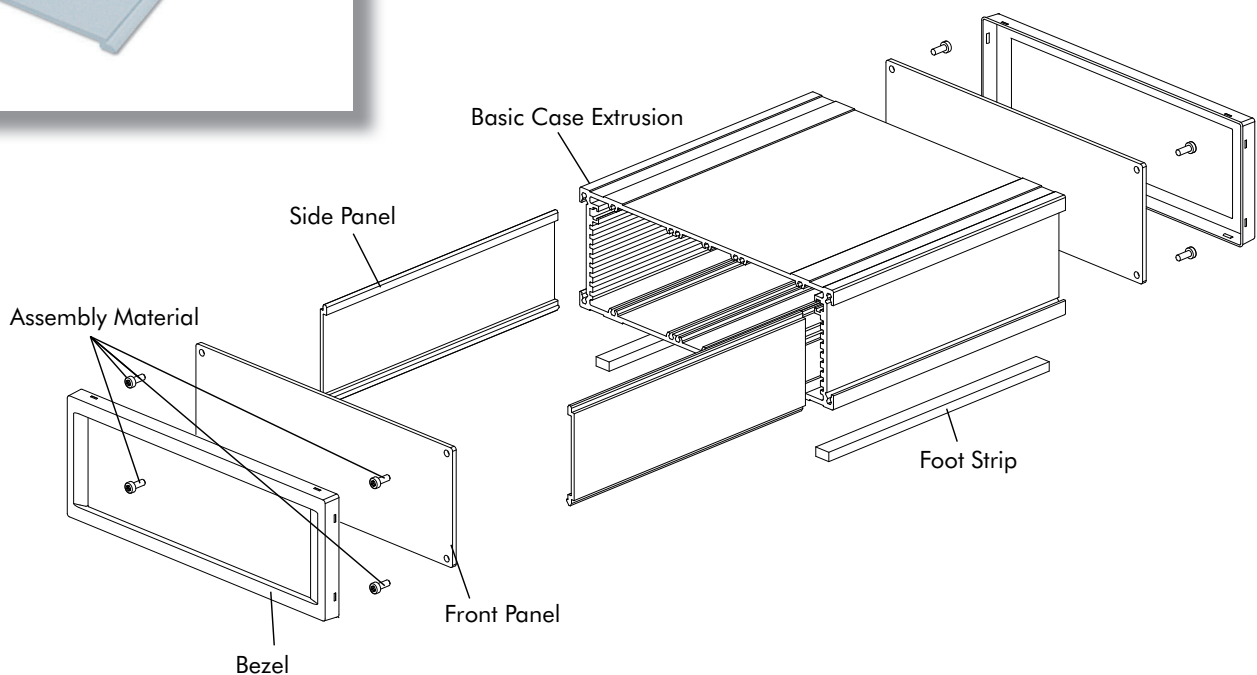
9.6.2 Side Panels

- Side panel for convenient cosmetic finishing
- Can be ordered in a custom complementary colour to the case
- Side panels are inserted into the basic case
- Material: aluminium, powdered
- Scope of delivery:
 - 1 side panel
- Note: for 1 Minibox 34 two side panels have to be ordered



9.6.2 Side Panels

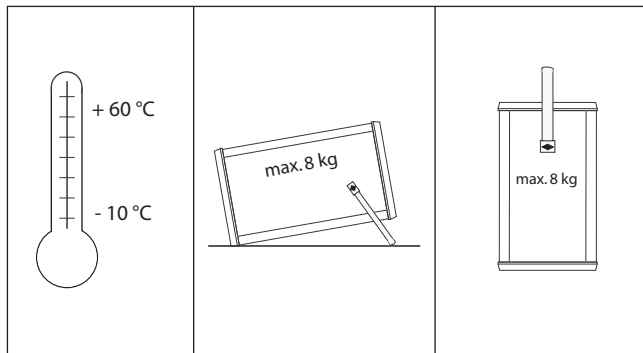
Case size	Colour	Depth			
		100 mm 3.93"	160 mm 6.30"	220 mm 8.66"	233.45 mm 9.18"
1	white aluminium	66-351-0100- 00	66-351-0160- 00	66-351-0220- 00	66-351-0233- 00





9.6.3 Carrying Handle

- The handle is connected to the special side extrusion with the handle's adaptor and inserted into the side mounted flut
- The handle snaps into 3 different positions
- Scope of delivery:
 - 1 carrying / positioning handle, aluminium
 - 2 handle adaptors, plastic
 - 4 PT-countersunk screws, Torx T10
- Matching to the depth of case, 2 side panel extrusions have to be ordered separately, see below



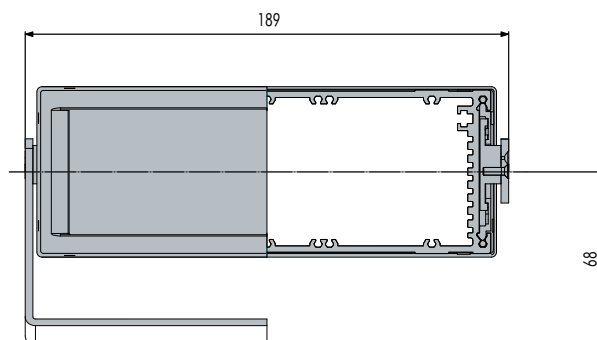
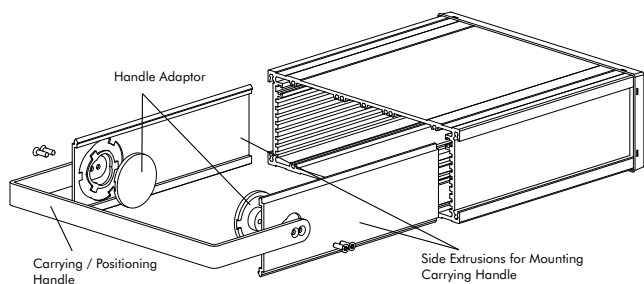
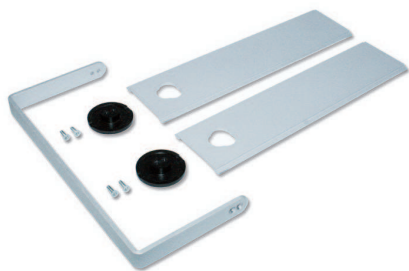
Carrying capacity dependent on distribution of load and handling. Decreases with dynamic stress

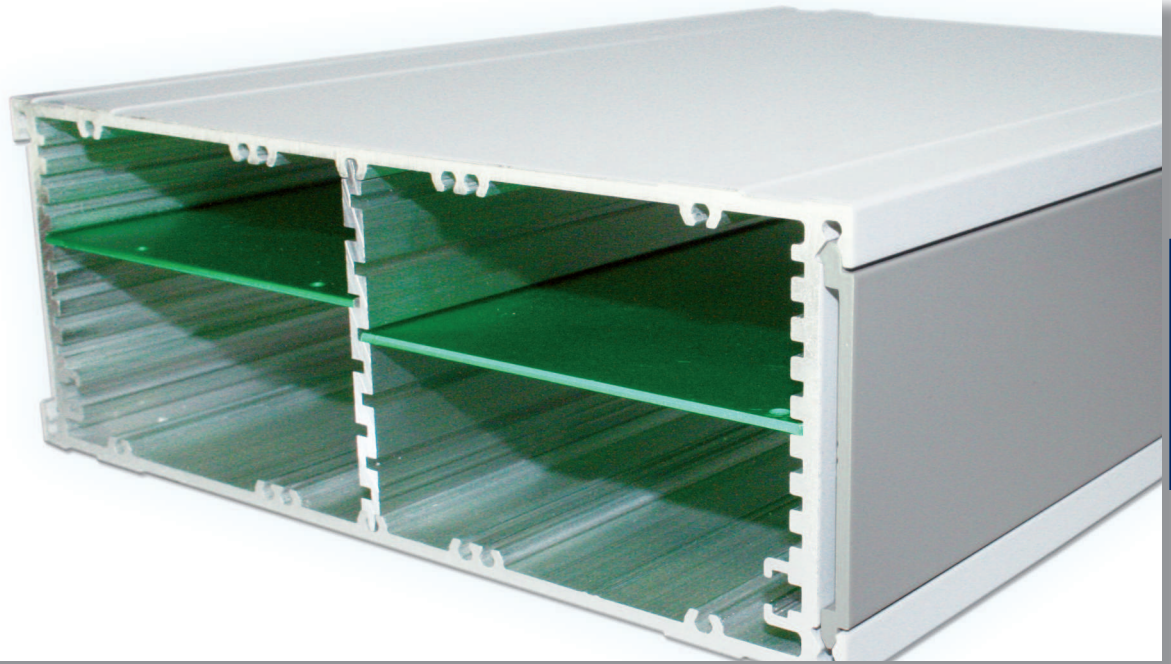
9.6.3.1 Carrying Handle

Description	Part-No.
Carrying handle set	34-13030

9.6.3.2 Side Extrusions for Mounting Carrying Handle

Case size	Colour	Depth		
		160 mm 6.30"	220 mm 8.66"	233.4 mm 9.18"
1	white aluminium	66-351-0160-02	66-351-0220-02	66-351-0233-02





9.6.4 Dividing Extrusion

- Raw aluminium extrusion
- Screwing in of a set screw allows fixing of a shorter dividing extrusion
- Can be inserted in any position at the upper and lower flutes
- With the dividing extrusion the Minibox 34 can be divided into several small divisions
- Scope of delivery:
 - 1 dividing extrusion aluminium, raw
- The dividing extrusion must not be longer in the case. Assembly material has to be ordered separately



9.6.4 Dividing Extrusions

Case size	Length		Part-No.
	mm	inch	
1	99.5	3.93	66-352-0100-90
	82	3.23	66-352-0082-90
	159.5	6.30	66-352-0160-90
	142	5.59	66-352-0142-90
	219.5	8.66	66-352-0220-90
	202	7.95	66-352-0202-90
	232.9	9.18	66-352-0233-90
	215.4	8.47	66-352-0215-90

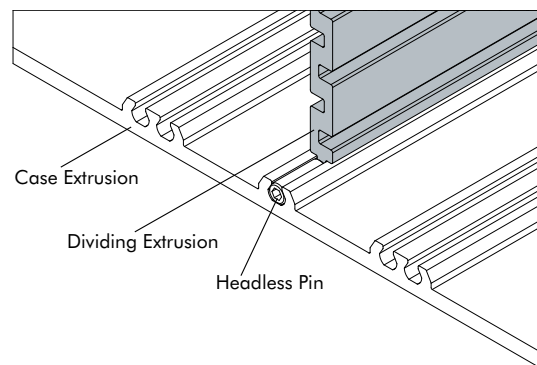
Assembly Material

- For dividing extrusions which are at least 18 mm shorter than the case extrusion

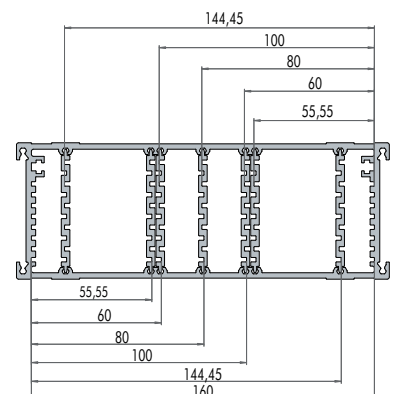
Description	Part-No.
Headless pin with internal hexagon, M3 x 8	5403-08
Hexagon key, 1.5 mm	61-520

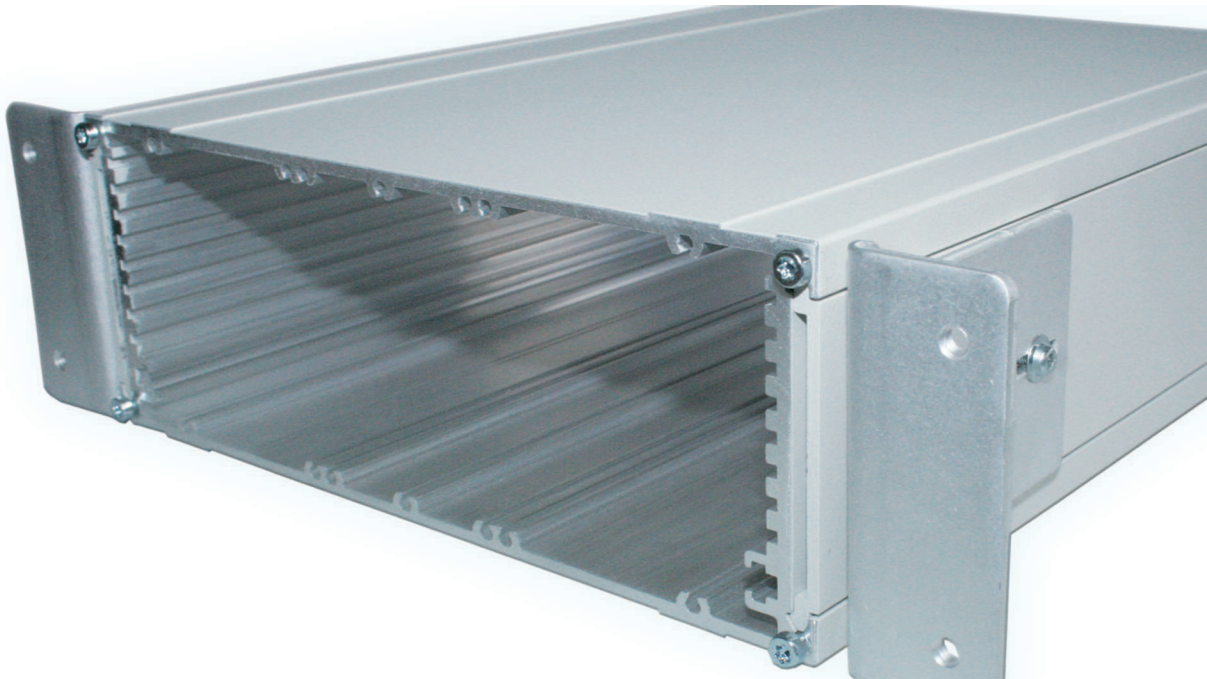
Multiples of 10 must be ordered; MOQ 10pcs.

Mounting Dividing Extrusion with Headless Pin



Card Mounting Possibilities





9.6.5 Bracket for Mounting in Consoles

- 3 mm (0.11") thick sheet aluminium mounting bracket
- Inserted into the slots on the sides of the Minibox 34 and positioned using two M4 x 6 mm set screws
- Using the mounting brackets, the compact case can be mounted into consoles, etc.
- Due to the slots in the brackets the case can be adjusted up to 12 mm in its depth
- Scope of delivery:
 - 2 brackets raw aluminium
 - 4 rounded head screws incl. washer, M3 x 8, Torx T10
- Matching the depth of case 2 side panel extrusions have to be ordered, see below



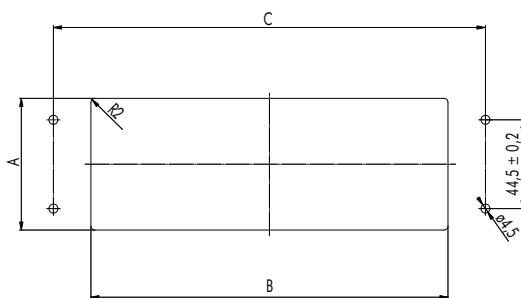
9.6.5.1 Bracket for Mounting in Consoles

Description	Part-No.
Bracket set	34-13020

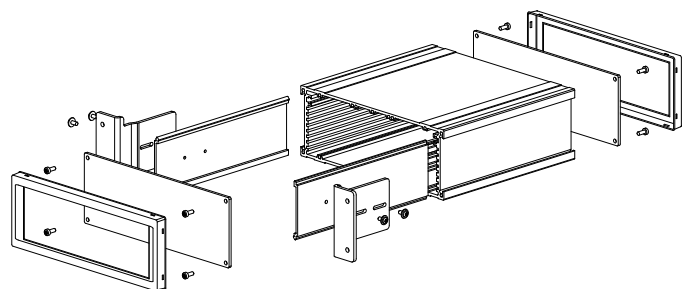
9.6.5.2 Side Extrusions for Mounting Brackets

Case size	Colour	Depth			
		100 mm 3.93"	160 mm 6.30"	220 mm 8.66"	233.4 mm 9.18"
1	white aluminium	66-351-0100-01	66-351-0160-01	66-351-0220-01	66-351-0233-01

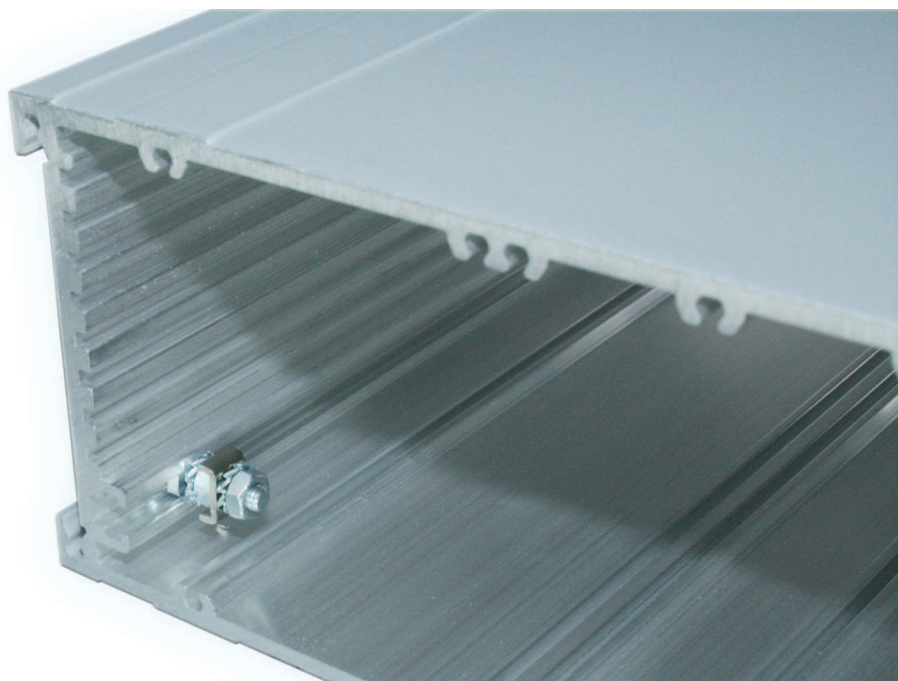
Cut-out drawing:



Bracket mounting position:



Case size	A		B		C	
	mm	inch	mm	inch	mm	inch
1	66	2.60	179	7.05	216.6	8.52

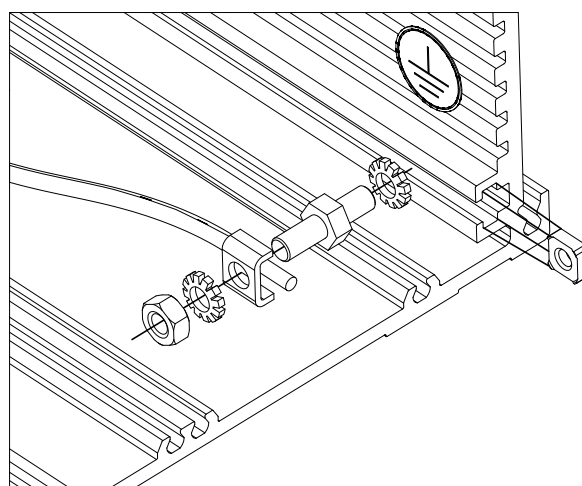
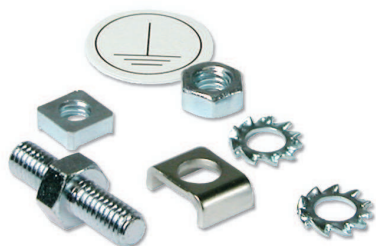


9.6.6 Earthing Terminal

- The earthing terminal facilitates grounding of the Minibox 34 in accordance with EN / VDE / SEV standard
- Scope of delivery:
 - 1 earthing nut M3.5
 - 1 threaded bolt M3.5
 - 1 clamping yoke
 - 2 serrated washers
 - 1 nut M3.5
 - 1 earthing symbol

9.6.6 Earthing Terminal

Description	Part-No.
Earthing terminal	33-619



9: Minibox 34

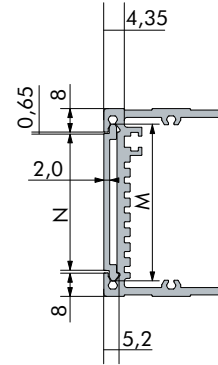
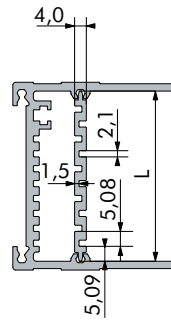
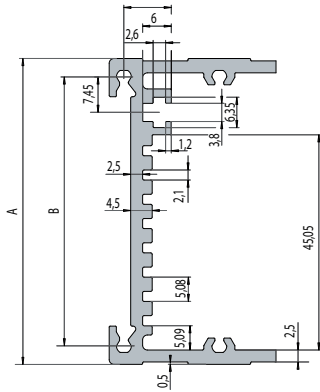
9.7 Dimensions / Technical Information

9.7.1 Cross Sections of Extrusions

Case size 1

Dividing Extrusion Size 1

Side Extrusion Size 1

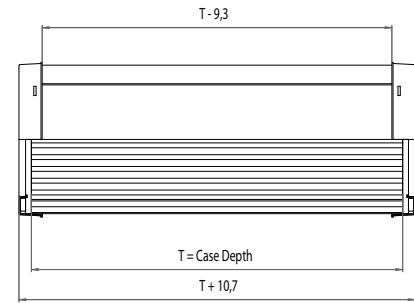
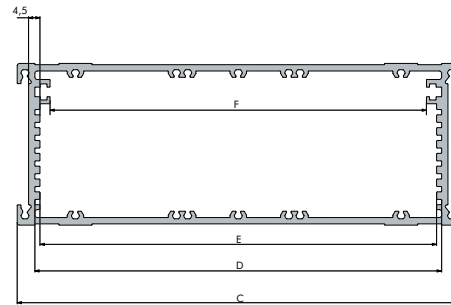
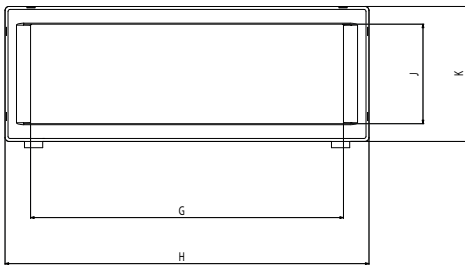


9.7.2 Line Drawings

Front View

Internal Dimensions

Side View



Type		A	B	C	D	E	F	G	H	J	K	L	M	N
1	mm	64.0	56.3	175	161	157	149	154.4	179.6	49.1	66.6	58	53.5	46.7
	inch	2.52	2.21	6.89	6.34	6.18	5.86	6.08	7.07	1.93	2.62	2.28	2.10	1.84

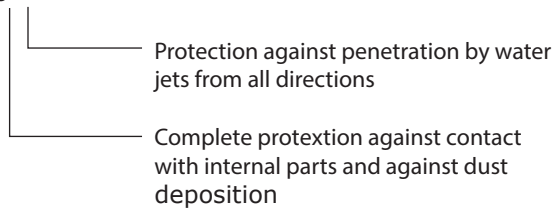
9.7.3 IP Protection Classes

- Protection against contact and foreign bodies
- Protection against water
- According to IEC 60529

Evaluation of classification

- The test results according to the standard do not entirely exclude leaks and an individual test is therefore recommended in critical cases (with the actual equipment layout)
- The protection class for cabinets and enclosures is specified by IP (International Protection) and two indices

Example IP 55



9.7.3 IP Protection Classes

First Index	Contact Protection	Foreign-Body Protection
0	No special protection	
1	Against large areas of body	Large foreign bodies $\varnothing \ge 50$ mm (1.97")
2	Against fingers or objects of similar size	Medium-sized foreign bodies $\varnothing \ge 12.5$ mm (0.49")
3	Against tools, wires, etc. with a thickness of ≥ 2.5 mm	Granular foreign bodies $\varnothing \ge 2.5$ mm (0.10")
4	Against tools, wires, etc. with a thickness of ≥ 1.0 mm	Granular foreign bodies $\varnothing \ge 1.0$ mm (0.04")
5	Complete protection	Dust-protected; dust deposits are permitted, but their volume must not affect the function of the unit
6	Complete protection	Dust-proof

Second Index	Water Protection
0	No special protection
1	Against water dripping vertically
2	Against water dripping at an angle (up to 15° from the vertical)
3	Against spray water (any direction up to 60° from the vertical)
4	Against spray water from all directions
5	Against water jets from a nozzle in all directions
6	Against inundation
7	Against immersion
8	Against submersion