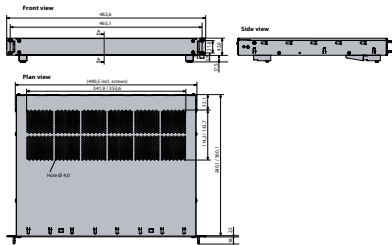


powerful, slim,  
efficient

# Enclosures & Components

## Slimkit 10

The new slim 19-inch EMC chassis with an overall height of 1 U



## 1.1 EMC-Slimkit 10 Overview

A | 1\_2

## 1.2 Slimkit 10 EMC Chassis

A | 1\_5

1.2.1 Slimkit 10 Basic Tray

A | 1\_5

1.2.2 Front Panel

A | 1\_6

1.2.3 Rear Panel

A | 1\_6

1.2.4 Top Cover

A | 1\_7

1.2.5 Mounting Chassis

A | 1\_7

## 1.3 Accessories

A | 1\_8

1.3.1 Earthing Set

A | 1\_8

1.3.2 Case Feet

A | 1\_8

## 1.4 Technical Information

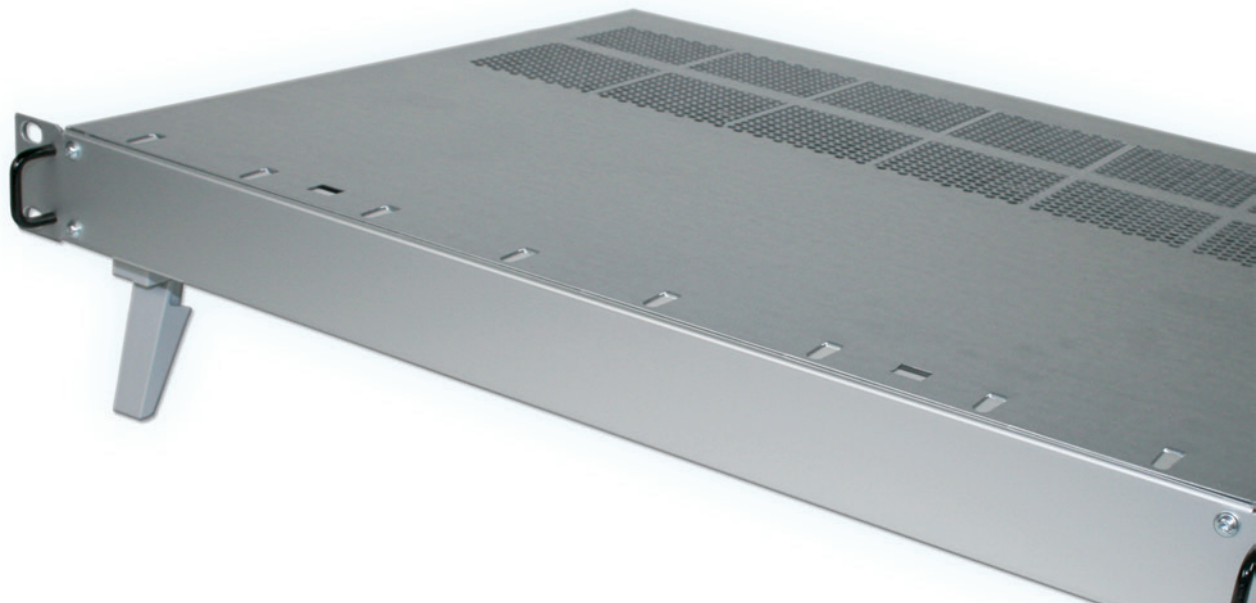
A | 1\_9

1.4.1 Line Drawings for Slimkit 10

A | 1\_9

1.4.2 Assembly SHEETtracs® Screw

A | 1\_9



## 1.1 EMC-Slimkit 10 Overview

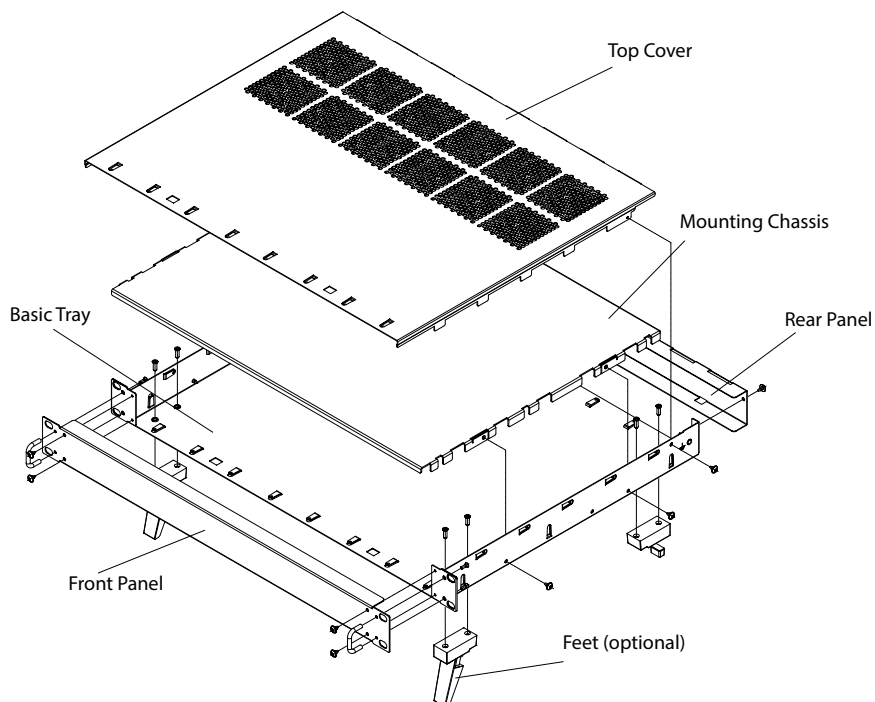
- 19" EMC chassis 1 U
- Basic model can be transformed into a complete case by adding a rear panel, top cover as well as a mounting chassis
- Design allows numerous combinations to be assembled according to the application
- Hard and wear resistant aluminium front panel
- With or without perforations for optimised thermal solution
- EMC-Slimkit 10 can be presented in a number of attractive finishes for individual product tailoring

### Technical features

- 19" chassis with excellent EMC feature
- Front panel: aluminium, frame construction: sheet steel, pre-galvanised
- Vibration-proof
- EMC shielding without gaskets is standard
- Fast assembly
- Easy access
- Front- and rear panel can be removed for easy machining

### Applications

- Accommodates flat components
- Slim test equipment
- Controls
- Telecommunication equipment
- Audio and radio equipment
- Signal Converters



## EMC

“Electromagnetic compatibility is the ability of a system to operate in the intended environment without causing or suffering unacceptable degradation of performance due to unintentional electromagnetic radiation or response.”

The EMC characteristics of a system therefore consist of an appropriate immunity from interference (noise immunity) and a limited emission of interference (noise emission).

Elma’s EMC concept describes three levels of electromagnetic shielding performance (Performance Level). The attenuation levels will simplify the selection of sub racks for the user.

Test setup: The first measurement E1 is without the enclosure. The next measurement E2 is made with the transmitting antenna installed inside the enclosure. The difference between the received signal without and with the enclosure represents the shielding effectiveness in dB.

Performance Level	30 - 230 MHz	230 - 1000 MHz	1000 - 2000 MHz
1 / Elma: Basic level	20 dB	10 dB	0 dB
2 / Elma: Advanced level	40 dB	30 dB	20 dB
3 / Elma: Superior level	60 dB	50 dB	40 dB

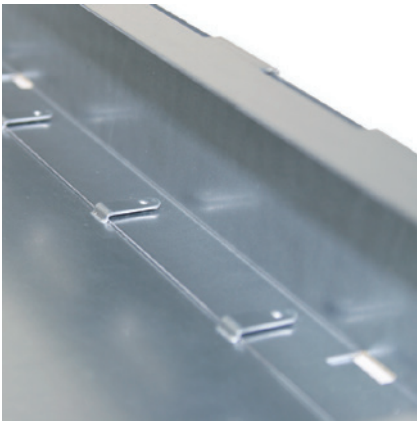
The standard configuration will provide you with an advanced EMC level (Basic level with perforation).

## The integrated EMC solution



### EMC contacts

- Top cover to rear panel



### EMC contacts

- Bottom tray to rear panel
- Bottom tray to front panel
- Top cover to front panel



### EMC contacts

- Top cover to bottom tray

# 1: Slimkit 10

## Configuration

A



### Basic Tray 1.2.1

- 1 U
- 240 mm / 360 mm
- Solid / perforated

### Front Panel 1.2.2

- With / without handles
- Different colours

### Rear Panel 1.2.3

### Top Cover 1.2.4

- 240 mm / 360 mm
- Solid / perforated

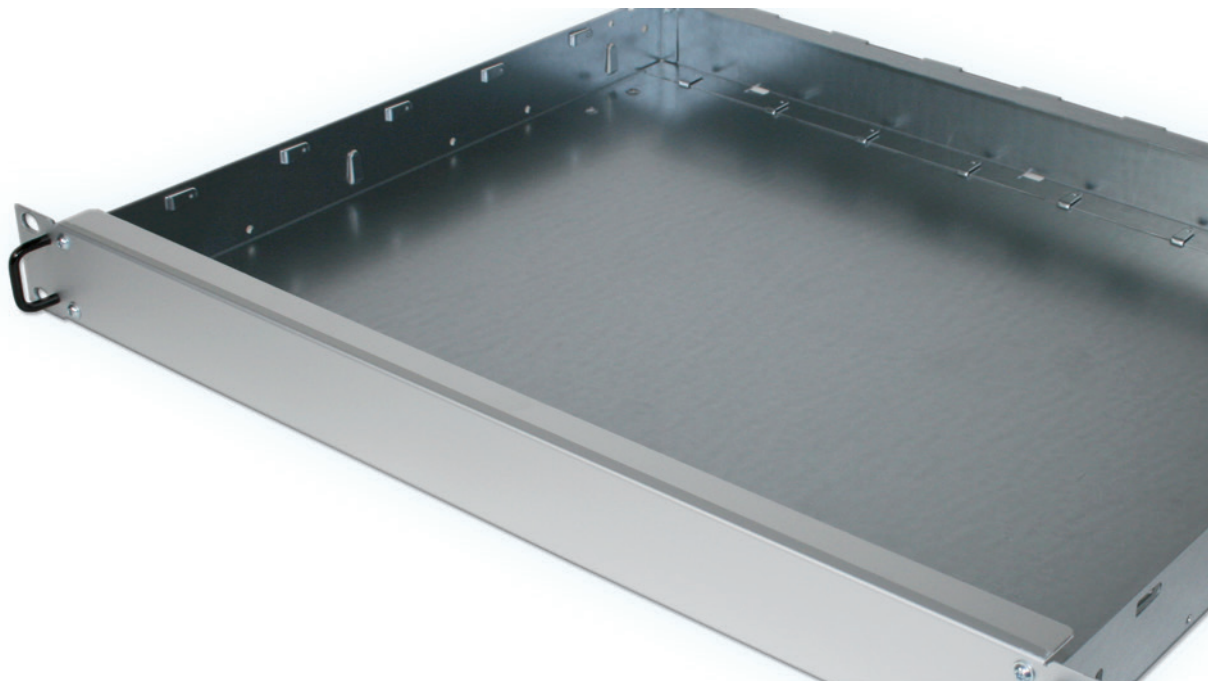
### Mounting Chassis 1.2.5

- 240 mm / 360 mm

### Accessories 1.3

- Earthing Kit
- Case feet



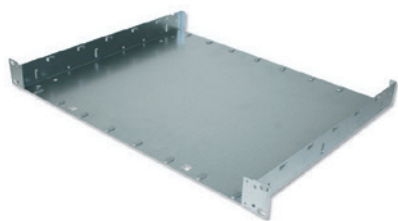


## 1.2 Slimkit 10 EMC Chassis

### 1.2.1 Slimkit 10 Basic Tray

- 0.75 mm sheet steel, pre-galvanised
- With holes for fastening of mounting chassis, feet, earthing terminals, front / rear panel, top cover
- **Scope of delivery:**
  - Basic Tray
  - Assembly material for mounting front panel, rear panel, mounting chassis, top cover (12 round head SHEETtracs® screws 3,0 x 6, Torx T10)
- Front Panel see 1.2.2
- Rear Panel see 1.2.3
- Top Cover see 1.2.4
- Mounting Chassis see 1.2.5

#### 1.2.1 Slimkit 10 Basic Tray



Height	Depth		Perforation	Air Passage		Part-No.
	mm	inch		mm <sup>2</sup>	sq. inch	
1 U	240	9.45	Solid	-	-	10-91100-00
1 U	240	9.45	Perforated	18095	28.04	10-91101-00
1 U	360	14.17	Solid	-	-	10-91110-00
1 U	360	14.17	Perforated	21714	33.65	10-91111-00

# 1: Slimkit 10

## 1.2.2 Front Panel

- 1.0 mm aluminium
- Rear: conductive, front: clear anodised / powder coated black (RAL 9005) / powder coated light grey (RAL 7035)
- With or without black handles
- Customised front panel upon request (see front panel service)
- **Scope of delivery:**
  - Front panel
  - Handle set (2 black U-handles, 4 countersunk screws M2.5 x 8, Torx T8) in handle versions only
- Assembly material for mounting front panel included in basic tray set



### 1.2.2 Front Panel

Height	Front	Handles	Part-No.
1 U	Clear anodised	Yes	10-46100-00
1 U	Clear anodised	No	10-451-00
1 U	Black powder coated	Yes	10-46160-00
1 U	Black powder coated	No	10-451-60
1 U	Light grey powder coated	Yes	10-46130-00
1 U	Light grey powder coated	No	10-451-30

## 1.2.3 Rear Panel

- 0.75 mm sheet steel, pre-galvanised
- Rear panel with customised cut outs upon request
- **Scope of delivery:**
  - Rear panel
- Assembly material for mounting rear panel included in basic tray set

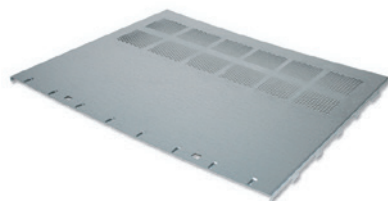


### 1.2.3 Rear Panel

Description	Part-No.
Slimkit 10 Rear Panel 1 U	10-901-00

## 1.2.4 Top Cover

- 0.75 mm sheet steel, pre-galvanised
- With or without air perforation
- **Scope of delivery:**
  - Top cover
- Assembly material for mounting top cover included in basic tray set

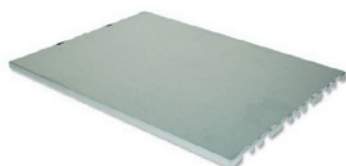


### 1.2.4 Top Cover

Depth		Perforation	Air Passage		Part-No.
mm	inch		mm <sup>2</sup>	sq. inch	
240	9.45	Solid	-	-	10-920-00
240	9.45	Perforated	18095	28.04	10-920-01
360	14.17	Solid	-	-	10-920-10
360	14.17	Perforated	21714	33.65	10-920-11

## 1.2.5 Mounting Chassis

- For mounting components
- Mounting chassis 240 mm can be mounted in Slimkit 10 with depth 360 mm
- 1.25 mm sheet steel, pre-galvanised
- Mounting chassis with customised cut outs upon request
- **Scope of delivery:**
  - Mounting chassis
- Assembly material for mounting chassis included in basic tray set



### 1.2.5 Mounting Chassis

Description	Part-No.
Slimkit 10 mounting chassis 240 mm	10-930-50
Slimkit 10 mounting chassis 360 mm	10-931-50

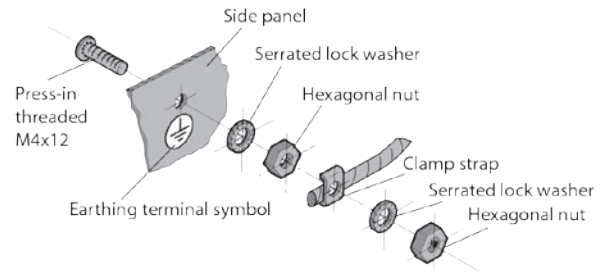


# 1: Slimkit 10

## 1.3 Accessories

### 1.3.1 Earthing Set

- Enables cases to be earthed in conformance with EN / VDE / SEV
- **Scope of delivery:**
  - 1 press-in threaded bolt M4
  - 2 serrated lock washers
  - 2 hexagonal nuts M4
  - 1 terminal clamp
  - 1 earthing symbol



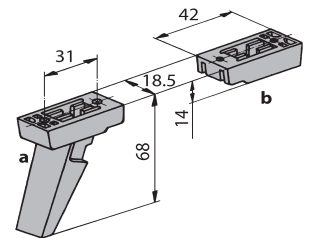
#### 1.3.1 Earthing Set

Description	Part-No.
Earthing set according to EN VDE / SEV	63-174



### 1.3.2 Case Feet

- Tilt foot / Non-tilt foot
- Choice of colours: light grey (RAL 7035) or black (RAL 9005)
- Glass-fiber reinforced plastic, UL94 V-0
- Up to 30 kg carrying capacity per set
- **Scope of delivery:**
  - 1 set of feet
  - Assembly material (8 cross recessed countersunk PT-screw 3.5 x 8)



#### 1.3.2 Case Feet

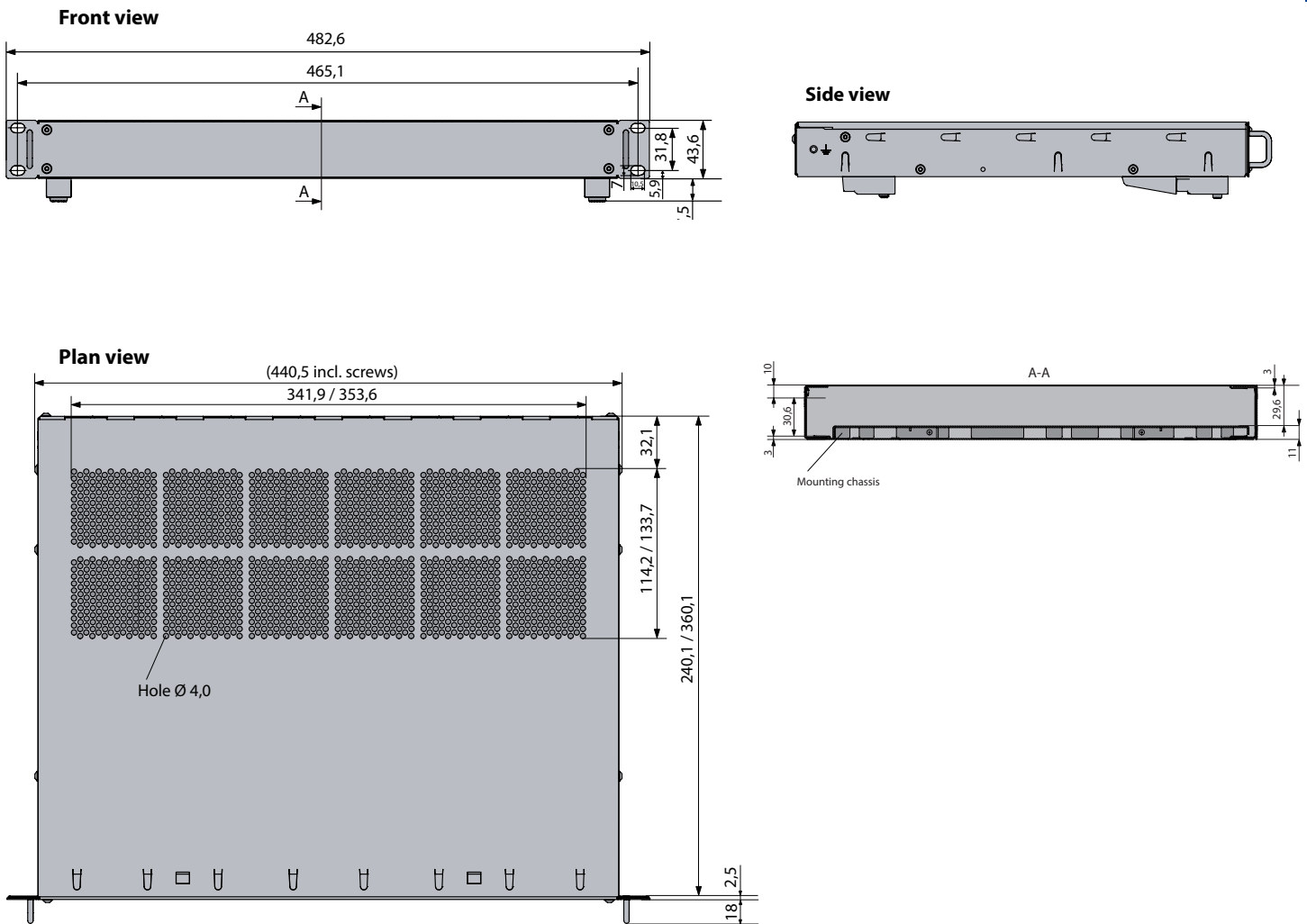
Description	Colour	Part-No.
Case feet, 4 x b	Light grey (RAL 7035)	63-019
Case feet, 4 x b	Black (RAL 9005)	63-321
Case feet, 2 x a + 2 x b	Light grey (RAL 7035)	63-018
Case feet, 2 x a + 2 x b	Black (RAL 9005)	63-320



# 1: Slimkit 10

## 1.4 Technical Information

### 1.4.1 Line Drawings for Slimkit 10

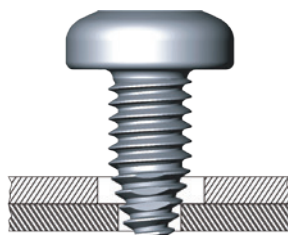


### 1.4.2 Assembly SHEETtracs® Screw

- For a secure thin sheet metal joint with pre-hole

#### 1.4.2 SHEETtracs® Screw

Description	Material	Part-No.
3 x 6, Torx T10	Steel, zinc-plated	5477-01



1. Initial position



2. Thread grooving



3. Tightening