

## Instrument & Compact Cases

### Stylebox 15 Smart

Stylebox 15 Smart is the smart housing solution for demanding EMC requirements.

#### small

- Appropriate size: 2 U, 32 HP, 155 mm
- Compact variant of Stylebox 15

#### smart

- Attractive design
- Unobtrusive screws

#### modular

- Many size variations
- Available in various colors

#### Systemlösungen

Integrierte Systeme   Grundsysteme   Backplanes   Embedded Produkte   Elektronikschränke

#### Gehäuse & Komponenten

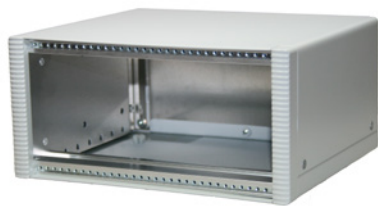
Gehäuse   Frontplatten   Aushebegriffe

#### Drehschalter

Schalter/Encoders   Knöpfe   LED's

**ELMA**  
Your Solution Partner

# 4: Stylebox 15 smart



## 4.1. Complete Stylebox 15 smart Kits

B | 4\_2

4.1.1 Feet

B | 4\_2

4.1.2 Foot / Cable Set (stone-grey)

B | 4\_2

4.1.3 Earthing Set

B | 4\_3

B

# 4: Stylebox 15 smart

## 4.1 Complete Stylebox 15 Kits

### 4.1.1 Stylebox 15 Smart Kit

- **Scope of delivery:**
  - 2 height bezels (detail see 2.2.2)
  - 2 front extrusions (detail see 2.2.1)
  - 2 tapped strips M2.5 (detail see 2.2.1)
  - 1 top cover panel, solid, light grey (detail see 2.2.4)
  - 1 bottom cover panel, solid, light grey (detail see 2.2.5)
  - 2 internal side panels (detail see 2.2.3)
  - 2 external side panels, solid, light grey (detail see 2.2.6)
  - 1 set of 4 pieces plastic feet (detail see 2.2.5.2)
  - 1 set assembly material
  - 1 set of EMC gaskets (detail see 2.5.8.1)
- Rear panel have to be ordered separately, see 2.2.7

Description	Height	Width	Depth			
			155 mm 6.10"	245 mm 9.64"	305 mm 12.00"	395 mm 15.55"
Desktop without front handles	2 U	32 HP	15A01200-30	-	-	-
Desktop with front handles		42 HP		15A02212-30	15A02213-30	-
Desktop with front handles		63 HP		15A02222-30	15A02223-30	-
Desktop with front handles		84 HP		15A02242-30	15A02243-30	-
19" case with front handles		84 HP		15A03242-30	15A03243-30	-
Desktop with front handles	3 U	42 HP		15A02312-30	15A02313-30	-
Desktop with front handles		63 HP		15A02322-30	15A02323-30	15A02324-30
Desktop with front handles		84 HP		15A02342-30	15A02343-30	15A02344-30
19" case with front handles		84 HP		15A03342-30	15A03343-30	15A03344-30
Desktop with front handles	4 U	63 HP		-	15A02423-30	15A02424-30
Desktop with front handles		84 HP		-	15A02443-30	15A02444-30
19" case with front handles		84 HP		-	15A03443-30	15A03444-30

### 4.1.2 Rear Panel

- For Stylebox 15 Smart
- 2.5 mm Aluminium, front anodised, rear conductive
- **Scope of delivery:**
  - 1 rear panel
- Rear feet for portable desktop application see 2.2.9
- Rear panel drawing see 2.3.8
- Assembly material see below

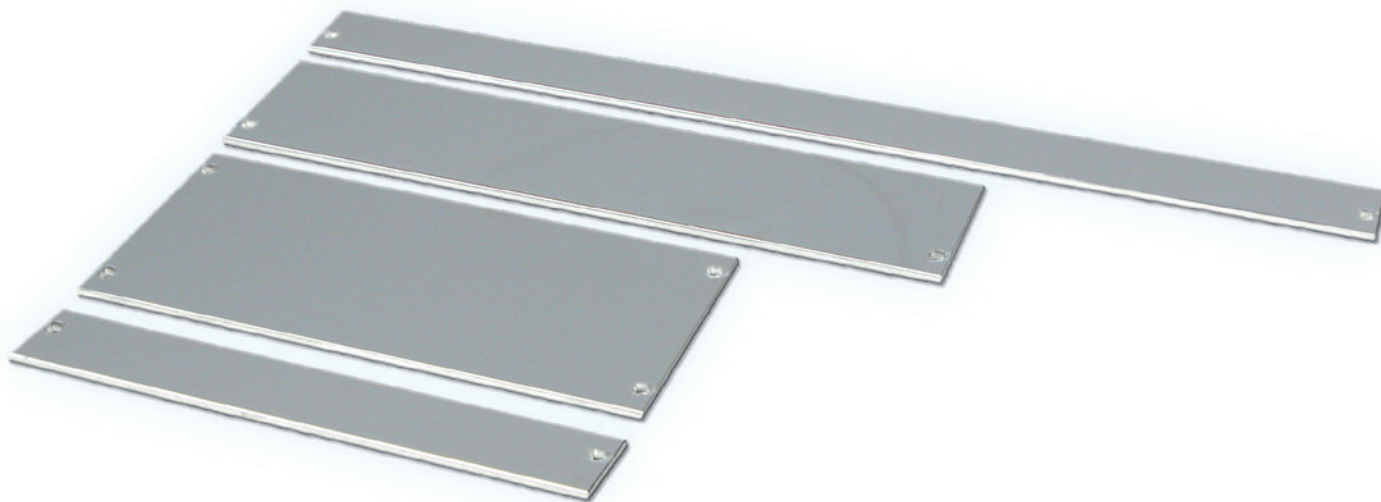
#### 4.2.1.1 Rear Panel

Description	Width	Height		
		2 U	3 U	4 U
Solid	32 HP	21A232	-	-
Solid	42 HP	21A242	21A342	-
Solid, portable desktop		-	-	-
Solid	63 HP	21A263	21A363	21A463
Solid, portable desktop		-	21A363-2	21A463-2
Solid	84 HP	21A284	21A384	21A484
Solid, portable desktop		-	21A384-2	21A484-2

#### 4.2.1.2 Assembly Material for Rear Panel

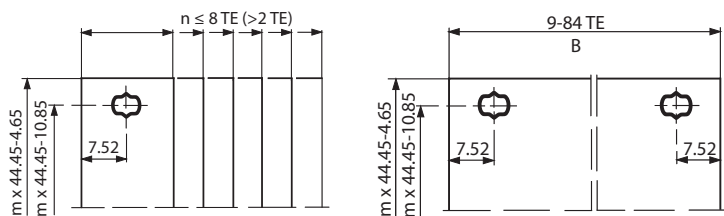
Description	Part-No.
Cross recessed pan shead screw M3x8	5330-08

# 4: Stylebox 15 smart



## 4.1.3 Flat Front Panels

- For sub racks and enclosures, solid
- Aluminium 2.5 mm, clear anodised (non-conductive)
- **Scope of delivery:**
  - Flat front panel
- Front panel screws, see below
- 1 HP and 2 HP are divider extrusions (not flat panels)



### 4.1.3 Flat Front Panels for Sub Racks and Enclosures, Solid

Width	B		Height			Part-No.		
	mm	inch	1 U 39.8 mm	ca. 1 U* 42.15 mm	2 U 84.2 mm	3 U 128.7 mm	4 U 173.1 mm	6 U 262.0 mm
1 HP	5.0	0.19	—	—	—	66-115-21	—	66-115-25
2 HP	10.0	0.39	—	—	—	21N302	—	21N602
3 HP	15.2	0.59	—	—	—	21N303	21N403	21N603
4 HP	20.1	0.79	—	—	—	21N304	21N404	21N604
5 HP	25.2	0.99	—	—	—	21N305	21N405	21N605
6 HP	30.3	1.19	—	—	—	21N306	21N406	21N606
7 HP	35.3	1.38	—	—	—	21N307	21N407	21N607
8 HP	40.4	1.59	—	—	—	21N308	21N408	21N608
10 HP	50.6	1.99	—	—	—	21N310	21N410	21N610
11 HP	55.7	2.19	—	—	—	21N311	—	—
12 HP	60.7	2.38	—	—	—	21N312	21N412	21N612
14 HP	70.9	2.79	—	—	—	21N314	21N414	21N614
16 HP	81.1	3.19	—	—	—	21N316	21N416	21N616
20 HP	101.4	3.59	—	—	—	21N320	21N420	21N620
21 HP	106.5	4.19	—	—	—	21N321	21N421	21N621
28 HP	142.0	5.59	—	—	—	21N328	—	21N628
32 HP	162.3	6.38	—	—	21N232	21N332	21N432	—
42 HP	213.1	8.38	—	—	21N242	21N342	21N442	21N642
52 HP	263.9	10.38	—	—	—	21N352	21N452	21N652
63 HP	319.8	12.59	—	—	21N263	21N363	21N463	21N663
81 HP	411.3	16.19	—	—	21N281	21N381	21N481	21N681
84 HP	426.5	16.79	21N184	21N084*	21N284	21N384	21N484	21N684

\* Coverplates for 1 U fan opening

### Front Panel Screws

- Set of 10 screws, with screw retainer

**Use Elma's front panel center for the processing, coloring, digital and anodized digital aluminium printing and installation of your operating unit.**

Description	Part-No. 10 pcs.
Milled edge screws recessed M2.5 x 11.3 with plastic screw retainer	63-159