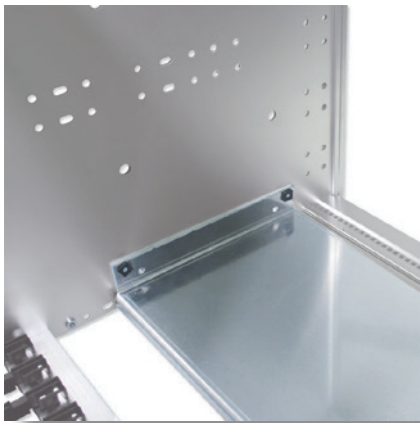
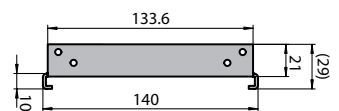
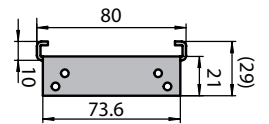


4.7 Step F: General Accessories

4.7.1 Mounting Chassis

4.7.1.1 Mounting Chassis, Rugged Design (Aluminium, 2 mm)

- **Scope of delivery:**
 - Assembly material included (4 earthing nuts M4, 4 cylinderhead screws M4 x 6, Torx T20)
 - Mounting chassis 85 HP (431.8 mm)



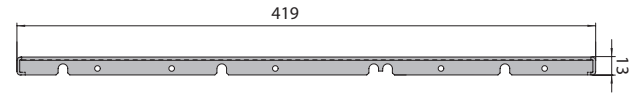
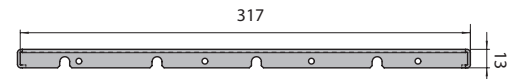
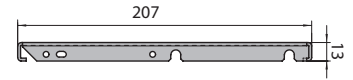
4.7.1.1 Mounting Chassis, Rugged Design (Aluminium, 2 mm)

Description	Part-No.
Depth: 140 mm	14K836-50

4: Systemkit 12K

4.7.1.2 Mounting Chassis Full Depth of Systemkit 12K

- For mounting non-standard modules and components
- Mounting chassis is fixed directly on the side panel
- Aluminium 2.0 mm, raw
- **Scope of delivery:**
 - 1 mounting chassis
- Assembly material see below
- Mounting chassis depth 207 mm can be mounted with 4 screws (317mm with 8 screws, 419mm with 10 screws)



4.7.1.2 Mounting Chassis, Rugged Design (Aluminium, 2 mm)

Sub Rack Depth		Chassis Depth		Part-No.
mm	inch	mm	inch	
289 / 291 mm	11.37 / 11.45	207 mm	8.15	14K850
400 mm	15.74	317 mm	12.48	14K851
500 mm	19.68	419 mm	16.49	14K852

Assembly Material

- For one mounting chassis
- **Scope of delivery:**
 - 4 Torx cylinder head screw M4 x 6, size T20
 - 4 earthing nut M4

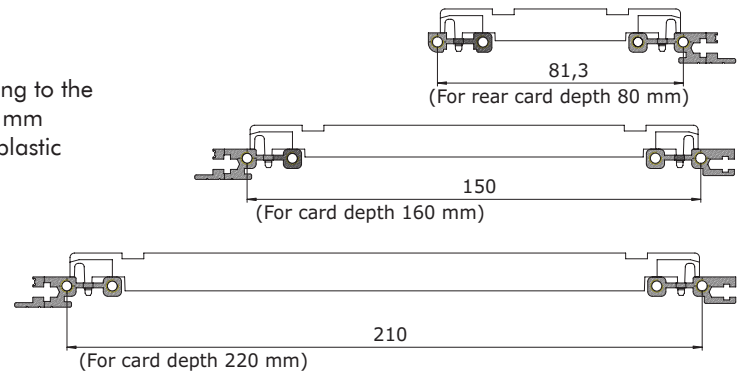
Description	Part-No.
Assembly material for mounting chassis with Torx-Screws	63K861



4.7.2 Card Guides

4.7.2.1 Card Guides IEC

- For positive location of circuit boards and plug-in units conforming to the dimensions of card depths 80 mm, 160 mm, 220 mm and 280 mm
- The card guides are non-flammable, made from a highquality plastic material reinforced with fibreglass UL94 V-0
- Including ESD provisions

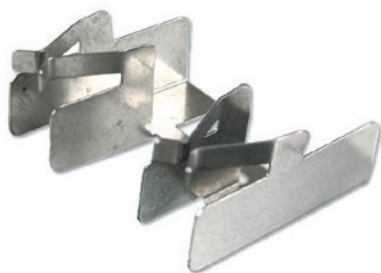


4.7.2.1.1 Card Guides 1-Slot, IEC

- **Scope of delivery:**
 - Card guide black plastic UL94 V-0
- ESD Clip see below (not usable for card depth 80 mm)

Card Thickness		Card Depth		Part-No.
mm	inch	mm	inch	
1.6	0.06	80	3.15	61-019
		160	6.30	61-044
		220	8.66	61-039
		280	11.02	61-017
2.0	0.08	160	6.30	61-087
		220	8.66	61-039
		280	11.02	61-169





4.7.2.1.2 ESD Clips

- Connecting printed board with case
- Stainless steel

Description	Part-No.
ESD clip front bottom/rear top	61-419-01
ESD clip front top/rear bottom	61-419-02



4.7.2.1.3 Card Guides 7-Slot in 4 HP Steps, IEC

- For reduced assembly time of multiple slot applications
- For use with single, double and triple eurocards with a depth of 160 mm
- For card thickness: 1.6 mm / 0.06"
- Black plastic, UL94 V-0
- ESD Clip not usable

Card Thickness		Card Depth		Part-No.
mm	inch	mm	inch	
1.6	0.06	160	6.30	61-076



4.7.2.1.4 Aluminium Card Guides 1-Slot, 3 Parts, IEC

- Extrusion: Aluminium
- End feet: plastic, UL94 HB
- For card thickness: 1.6 mm / 0.06"
- Card guide extrusion, aluminium, clear anodised
- ESD clip not usable

Extrusion

Card Depth		Length		Part-No. Aluminium
mm	inch	mm	inch	
160	6.30	112.5	4.43	66-122-20
220	8.66	172.5	6.79	66-122-21
280	11.02	232.5	9.15	66-122-22
340	13.38	292.5	11.51	66-122-23
400	15.74	352.5	13.87	66-122-24
-	-	1350	53.15	66-122-14

End Feet

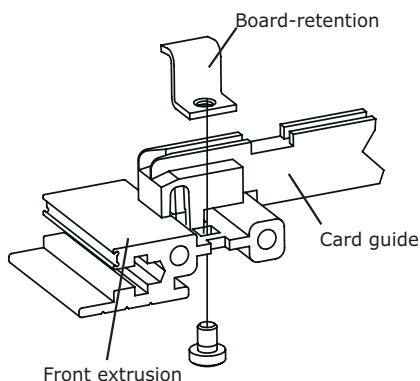
Description	Part-No. 1 Pair
End feet plastic, UL94 HB	61-069

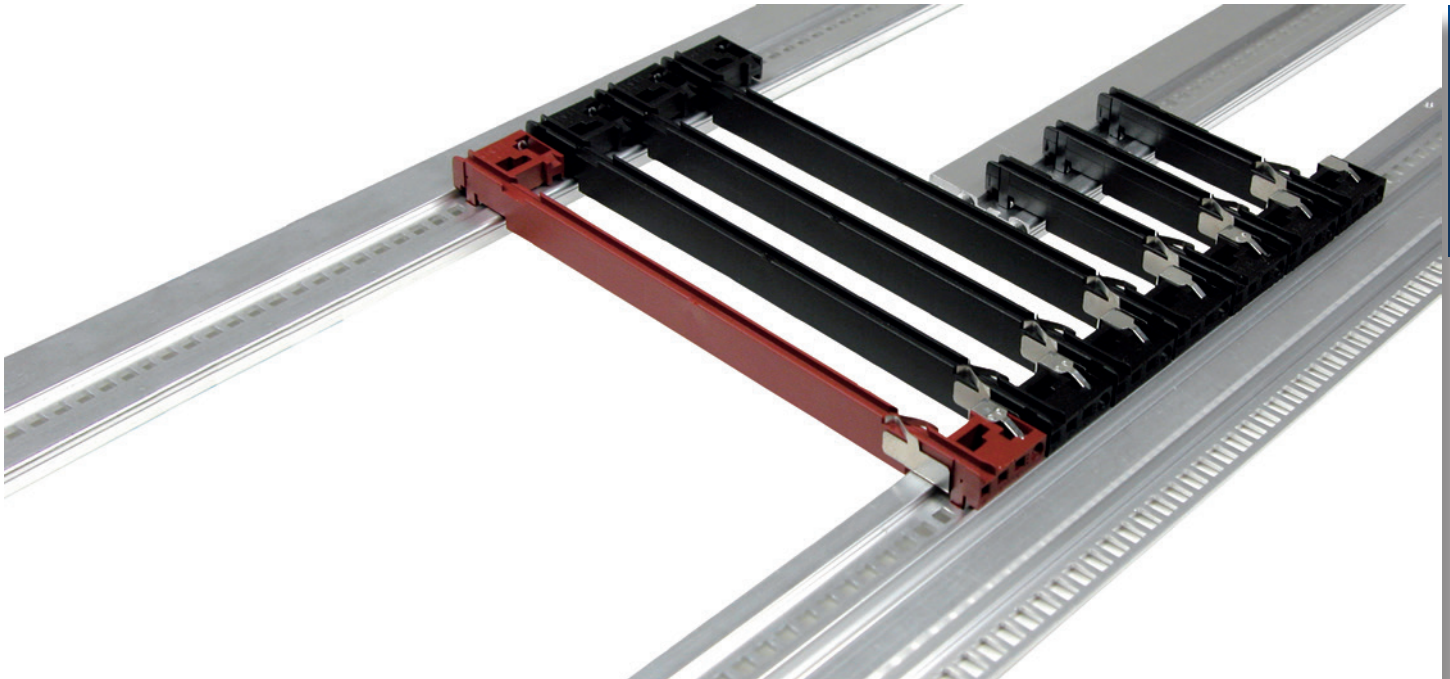
4.7.2.1.5 Card Guide Board-Retention Bar

Description	Part-No. 20 pcs.
Board-retention bar, zinc-plated steel	61-291

Assembly Material

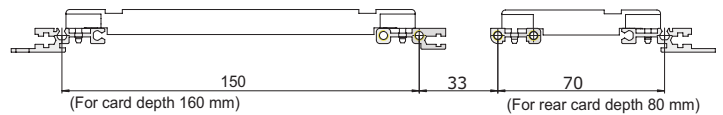
Description	Part-No.
Cross recessed round head screw M3 x 4	5331-04
Torx cylinder head screw M3 x 4, size T10	5470-01





4.7.2.2 Card Guides acc. to IEEE

- For positive location of PCBs and plug-in units conforming to the dimensions of card depths 80 mm, 160 mm, 220 mm, 280 mm and 340 mm
- The card guides are non-flammable, made from a highquality plastic material reinforced with fibreglass UL94 V-0
- With ESD provisions
- With keying and alignment pin possibilities



4.7.2.2.1 Card Guides 1-Slot, IEEE

- Card thickness 1.6 mm / 0.06" and 2.0 mm / 0.08"
- Plastic UL94 V-0



Card Depth		Colour	Part-No. 1 Pair
mm	inch		
80	3.15	black	61-949-01

Card Depth		Colour	Part-No. 1 pc.
mm	inch		
160	6.30	black	61-950-01
160	6.30	red	61-950-03

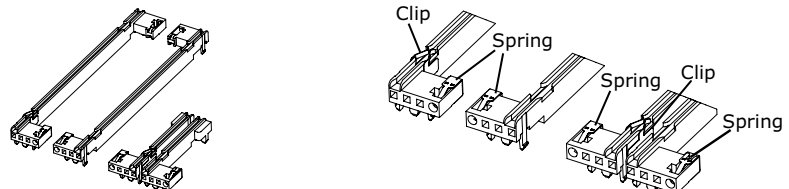
4.7.2.2.2 Card Guides 1-Slot, incl. mounted ESD-Components, IEEE

- Bottom: 1 ESD clip and 1 ESD spring
- Top: 1 ESD spring
- Black plastic UL94 V-0



Card Depth		Description	Part-No. 1 Pair
mm	inch		
80	3.15	1 pair top/bottom	61-949-02

Card Depth		Description	Part-No. 1 pc.
mm	inch		
160	6.30	1 piece bottom	61-950-02
160	6.30	1 piece top	61-950-04





4.7.2.2.3 Aluminium Card Guides 1-Slot, 3 Parts, 1.6 mm, IEEE

- Extrusion: Aluminium
- End feet: Plastic UL94 V-0
- For card thickness 1.6 mm / 0.06" and 2.0 mm / 0.08"

Extrusion

Card Depth		Part-No.
mm	inch	
160	6.30	66-452-20
220	8.66	66-452-25
280	11.02	66-452-30
340	13.38	66-452-35

End Feet

Colour	Part-No. 1 Pair
Black	61-955-01
Red	61-955-03

End Feet Offset

Colour	Part-No. 1 Pair
Pearlwhite	61-961-01

4.7.2.2.4 Aluminium Card Guides 1-Slot, 3 Parts, 2.4 mm, IEEE

- Extrusion: Aluminium
- End feet: Plastic UL94 V-0
- For card thickness 2.4 mm / 0.094"

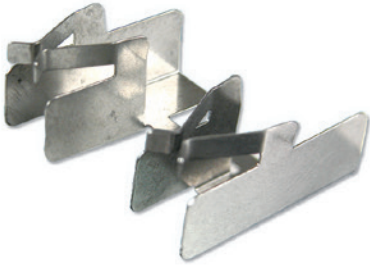
Extrusion

Card Depth		Part-No. 1 pc.
mm	inch	
160	6.30	66-453-20
220	8.66	66-453-25
280	11.02	66-453-30
340	13.38	66-453-35

End Feet

Colour	Part-No. 1 Pair
Black	61-956-01





4.7.2.2.5 ESD Clips

- Connecting printed board with case

Description	Part-No.
ESD clip front bottom/rear top	61-419-01
ESD clip front top/rear bottom	61-419-02



4.7.2.2.6 ESD Spring

- Connecting ESD pin with case
- BeCu finned
- Note: Notch inward-looking

Description	Part-No.
ESD spring	61-420



4.7.2.2.7 Coding Pins

- Acc. to IEC 60297-3-103
- Plastic, UL94 V-0
- Can be rotated in 4 positions

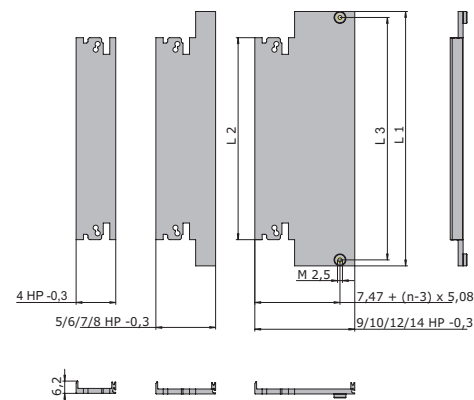
Description	Part-No.
Grey	81-054-02
Dark red	81-054-06
Black	81-054-04

4: Systemkit 12K

4.7.3 Plug-in Units

4.7.3.1 EMC Front Panels for IEC Plug-In Units with Cutouts for Ejector Handles acc. to IEC

- EMC Front Panels Aluminium with EMC Gasket
- Excellent EMC shielding
- Immune to snagging
- EMC-gasket slides onto the extrusion
- **Scope of delivery:**
 - EMC front panel, incl. pressed-in bushes M2.5 (size ≥ 10 HP)
- EMC-gasket see below
- Handle has to be ordered separately, see 4.7.3.2
- Front panel screw (size ≥ 10 HP), see below



4.7.3.1.1 Front Anodised, Rear Conductive (2 cutouts)

- With 2 cutouts (bottom + top)

Width	Part-No. 3 U	Part-No. 6 U	Part-No. 9 U
4 HP	66-514-23	66-514-26	66-514-29
5 HP	66-515-23	66-515-26	-
6 HP	66-516-23	66-516-26	66-516-29
7 HP	66-517-23	66-517-26	-
8 HP	66-518-23	66-518-26	66-518-29
9 HP	66-519-23	66-519-26	-
10 HP	66-520-23	66-520-26	66-520-29
12 HP	66-522-23	66-522-26	-
14 HP	66-534-23	66-534-26	-

4.7.3.1.2 Front Anodised, Rear Conductive (1 cutout)

- With 1 cutout (bottom)
- Incl. pressed-in centring pin and bush M2.5 (top)
- Incl. cutout for mounting of card holder 61-156 (top) with screw 5322-08 (see 2.2.2.7)

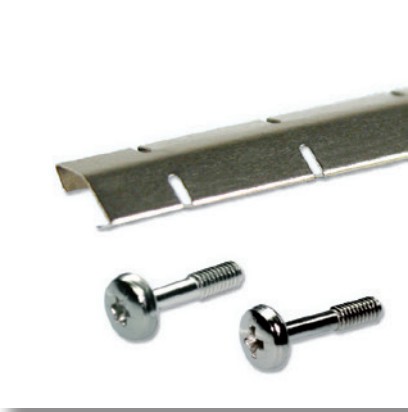
Width	Part-No. 3 U
4 HP	66-514-43
5 HP	66-515-43
6 HP	66-516-43
8 HP	66-518-43
10 HP	66-520-43
12 HP	66-522-43
14 HP	66-534-43

Dimensions

Height	L1 mm	L1 inch	L2 mm	L2 inch	L3 mm	L3 inch
3 U	128.55	5.06	102.05	4.01	122.50	4.82
6 U	261.90	10.31	235.40	9.27	255.85	10.07
9 U	395.25	15.56	368.75	14.51	389.20	15.32

4.7.3.1.4 EMC-Gasket (Stainless Steel)

Unit	Part-No. 3 U	Part-No. 6 U	Part-No. 9 U
1 pc.	81-062-03	81-062-06	81-062-09



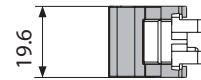
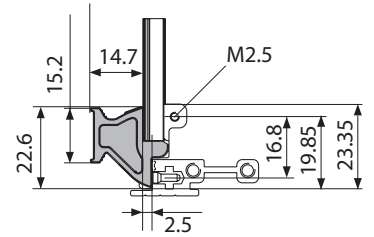
Front Panel Screw

- For EMC front panels size ≥ 10 HP = 2 additional screws are needed

Description	Part-No.
Cross recessed round head screws M2.5 x 12.7	61-287
Torx screws M2.5 x 11.3, size T8	5443-08

4.7.3.2 Ergonomic Ejector Handles acc. to IEC

- Simple assembly of plug-in units
- Allows trouble-free extraction of electronic units with multi-pole connectors
- Main features in one part: card holder, ejector handle and centring pin
- Reset spring for safe insertion
- One version for top and bottom only
- Handle is injection moulded, glass-reinforced plastic, UL94 V-0
- Card holder is zinc die-cast, nickel plated
- Reset spring is stainless steel
- Scope of delivery:**
 - Ejector handle
 - Assembly material (cross recessed screws M2.5 for fixing of card holder/printed board/front panel)
- Front panel with special cutouts have to be ordered separately



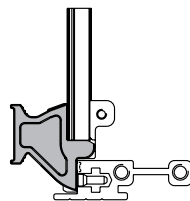
4.7.3.2 Ergonomic Ejector Handles acc. to IEC

Description	Part-No.
Ejector handle black	81-233
Ejector handle grey	81-234

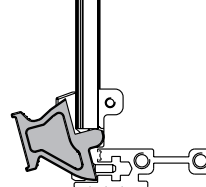


Extraction process:

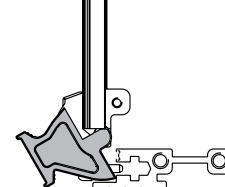
Rest position



Extraction



End position



Label

Description	Part-No.
1 sheet A4 of 220 labels	81-031

4: Systemkit 12K

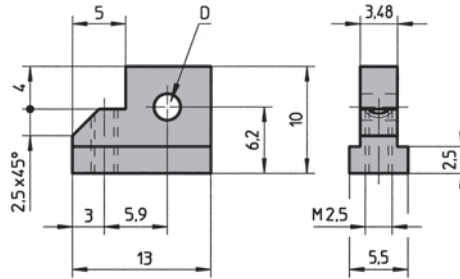
4.7.3.3 Card Holder acc. to IEC Standard

- By using the zinc die-cast card holder, flat front panels and EMC front panels acc. to IEC can be connected to a PC card to form a plug-in unit
- The card can be mounted both in the standard position and offset 1 HP (5.08 mm)
- **Scope of delivery:**
 - Card holder
- Assembly material see below



4.7.3.3.1 Card Holder without Swivel Stop

Description	Application	D	Part-No.
Card holder without swivel stop	Without injector / ejector handle	M2.5	61-156



Assembly Material

Description	Application	Part-No.
Cross recessed countersunk screw M2.5 x 8	For card holder	5322-08
Torx countersunk screw M2.5 x 8, size T8	For card holder	5470-21
Slotted pan head screw M2.5 x 6	For printed board	5571-06
Torx cylinder head screw M2.5 x 6, size T8	For printed board	5470-04



4.7.3.4 Card Holder/End Piece without ESD Pin

- **Scope of delivery:**
 - End piece card holder (zinc die-cast, nickel plated)
 - Assembly material (screws M2.5 for fixing of front panel/card holder/printed board)



4.7.3.4 Card Holder/End Piece without ESD Pin

Description	Part-No.
Top	81-018-01
Bottom	81-019-01

4.7.3.5 EMC Front Panels Aluminium with EMC Gasket acc. IEEF

- Excellent EMC shielding
- Immune to snagging
- EMC-gasket slid onto the extrusion
- **Scope of delivery:**
 - EMC front panel, incl. press-in bushes M2.5 (size \geq 10 HP)
- EMC-gasket see below
- Handle has to be ordered separately, see 4.7.3.7
- Front panel screw (size \geq 9 HP), see 4.7.3.5.5



4.7.3.5.1 Front Anodised, Rear Conductive (2 cutouts)

- With 2 cutouts (bottom + top)

Width	Part-No. 3 U	Part-No. 6 U
4 HP	66-514-23	66-514-26
5 HP	66-515-23	66-515-26
6 HP	66-516-23	66-516-26
7 HP	66-517-23	66-517-26
8 HP	66-518-23	66-518-26
9 HP	66-519-23	66-519-26
10 HP	66-520-23	66-520-26
12 HP	66-522-23	66-522-26
14 HP	66-534-23	66-534-26

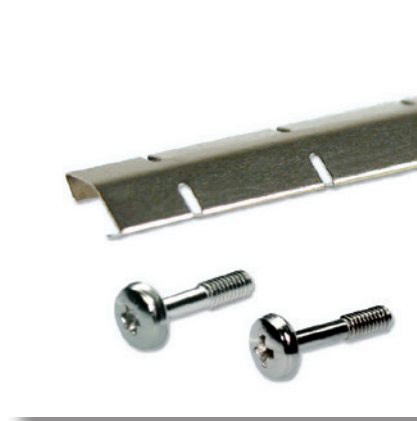
4.7.3.5.2 Front Anodised, Rear Conductive (1 cutout)

- With 1 cutout (bottom)
- Incl. pressed-in centring pin and bush M2.5 (top)
- Incl. cutout for mounting of card holder 61-156 (top) with screw 5322-08 (see 2.2.2.4)

Width	Part-No. 3 U
4 HP	66-514-43
5 HP	66-515-43
6 HP	66-516-43
8 HP	66-518-43
10 HP	66-520-43
12 HP	66-522-43
14 HP	66-534-43

4: Systemkit 12K

A



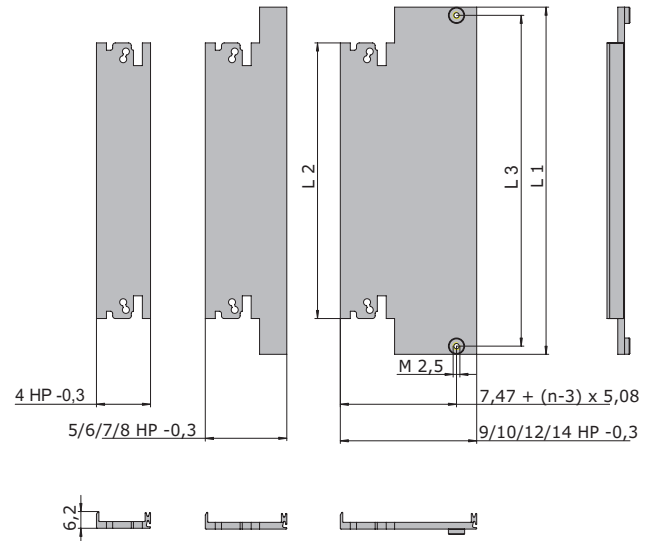
4.7.3.5.4 EMC-Gasket (Stainless Steel)

Unit	Part-No. 3 U	Part-No. 6 U
1 pc.	81-062-03	81-062-06

4.7.3.5.5 Front Panel Screw

- For EMC front panels size ≥ 9 HP = 2 additional screws are needed

Description	Part-No.
Cross recessed round head screws M2.5 x 12.7	61-287
Torx screws M2.5 x 11.3, size T8	5443-08



Dimensions

Height	L1 mm	L1 inch	L2 mm	L2 inch	L3 mm	L3 inch
3 U	128.55	5.06	102.05	4.01	122.50	4.82
6 U	261.90	10.31	235.40	9.27	255.85	10.07



4.7.3.7 Injector/Ejector Handles acc. to IEEE

Type			Mounting	ESD Pin	Colour	Part-No.
Ergonomic			Bottom	With ESD-pin	Black	81-076
Ergonomic			Top	With ESD-pin	Black	81-075
Ergonomic			Bottom	Without ESD-pin	Black	81-076-01
Ergonomic			Top	Without ESD-pin	Black	81-075-01
Ergonomic	Hot Swap		Bottom	With ESD-pin	Black	81-096
Ergonomic	Hot Swap		Top	With ESD-pin	Black	81-095
Ergonomic	Hot Swap		Bottom	Without ESD-pin	Black	81-096-01
Ergonomic	Hot Swap		Top	Without ESD-pin	Black	81-095-01
Ergonomic	Hot Swap	Offset	Bottom	With ESD-pin	Black	81-185
Ergonomic	Hot Swap	Offset	Top	With ESD-pin	Black	81-184
Classic			Bottom	With ESD-pin	Black	81-261
Classic			Top	With ESD-pin	Black	81-260
Classic		Offset	Bottom	With ESD-pin	Black	81-161
Classic		Offset	Top	With ESD-pin	Black	81-160
Classic	Hot Swap		Bottom	With ESD-pin	Black	81-256
Classic	Hot Swap		Top	With ESD-pin	Black	81-255
Classic	Hot Swap	Offset	Bottom	With ESD-pin	Black	81-156
Classic	Hot Swap	Offset	Top	With ESD-pin	Black	81-155
Telecom	Hot Swap		Bottom	With ESD-pin	Black	81-206
Telecom	Hot Swap		Top	With ESD-pin	Black	81-205
Telecom	Hot Swap		Bottom	Without ESD-pin	Black	81-206-01
Telecom	Hot Swap		Top	Without ESD-pin	Black	81-205-01
Telecom	Hot Swap	Offset	Bottom	With ESD-pin	Black	81-189
Telecom	Hot Swap	Offset	Top	With ESD-pin	Black	81-188
Telecom long	Hot Swap		Bottom	With ESD-pin	Black	81-215
Telecom long	Hot Swap		Top	With ESD-pin	Black	81-214
Telecom long	Hot Swap	Offset	Bottom	With ESD-pin	Black	81-116
Telecom long	Hot Swap	Offset	Top	With ESD-pin	Black	81-117
Microswitch						81-088-1 (10 pcs.)

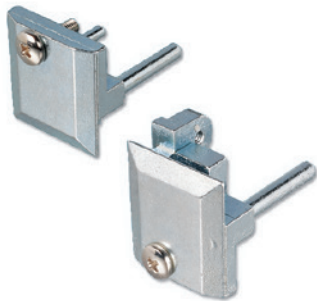
For more information refer to chapter C|3 "Handles".

4: Systemkit 12K

4.7.8.8 Card Holder and Coding Pins acc. to IEEE

• Scope of delivery:

- End piece card holder (zinc die-cast, nickel plated)
- Assembly material (screws M2.5 for fixing of front panel/card holder/printed board)



4.7.3.8.1 Card Holder/End Piece with ESD Pin

Description	Part-No.
Top	81-018
Bottom	81-019



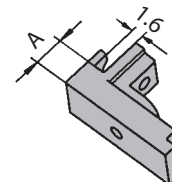
4.7.3.8.2 Card Holder/End Piece without ESD Pin

Description	Part-No.
Top	81-018-01
Bottom	81-019-01



4.7.3.8.3 Middle Part

- Usable for all front panels
- For positioning and fixing of 6 U and 9 U cards, card thickness 1.6 mm
- Material: Plastic UL94 V-0



Description	A		Part-No.
	mm	inch	
Aluminium 2.5 mm	2.5	0.10	61-960

Assembly Material

Description	Part-No.
PT-countersunk, 2.5 x 6	5534-06



4.7.3.8.4 Coding Pins

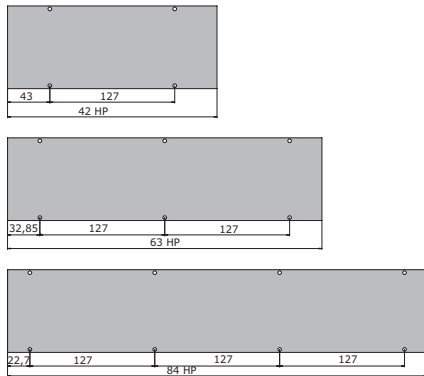
- Acc. to IEC 60297-3-103
- Plastic, UL94 V-0
- Can be rotated in 4 positions

Description	Part-No.
Grey	81-054-02
Dark red	81-054-06
Black	81-054-04

4.7.4 Front Panels

4.7.4.1 EMC Flat Front Panels

- Aluminium 2.5 mm (conductive)
- Closes the front or rear of the sub rack with very high shielding effectiveness
- Contact between the flat front panel and the case is made via EMC gaskets

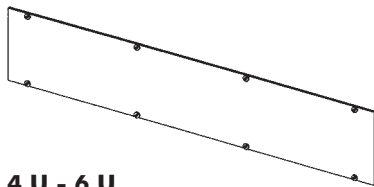


4.7.4.1.1 Advanced EMC Level

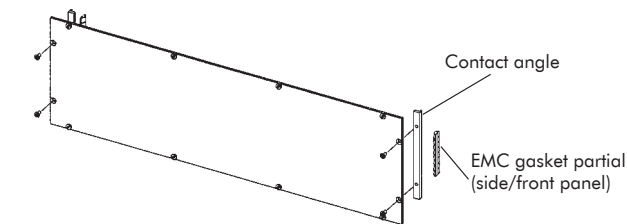
- **Scope of delivery:**
 - EMC flat front panel
 - Contact angle, incl. screws (4 + 6 U version only)
 - EMC gasket for contact angle (4 + 6 U version only)
- Front panel screws see below
 - Front panel width 42 HP = 4 screws
 - Front panel width 63 HP = 6 screws
 - Front panel width 84 HP = 8 screws

Width	Part-No. 1 U	Part-No. 2 U	Part-No. 3 U	Part-No. 4 U	Part-No. 6 U
42 HP	-	-	21C342	-	-
63 HP	-	21C263	21C363	21C463	-
84 HP	21C184	21C284	21C384	21C484	21C684

1 U - 3 U



4 U - 6 U



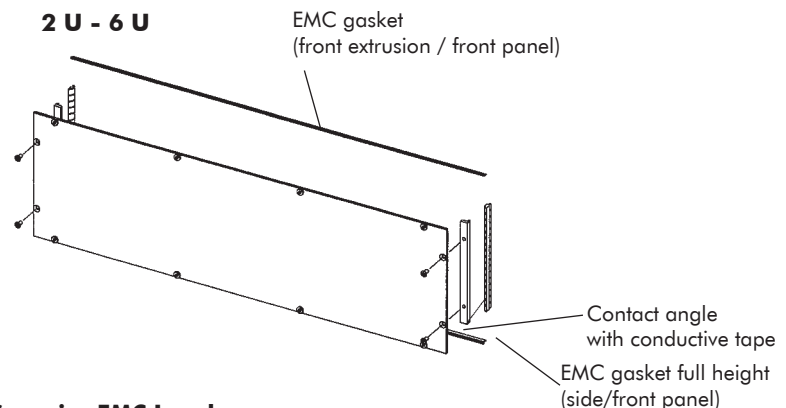
4.7.4.1.2 Front Panel Screws

Description	Part-No. 10 pcs.
Torx screws M2.5 x 11.3, size T8, with press-fit bush	63K480
Screw recessed M2.5 x 11.3, with press-fit bush	63-444
Screw cross recessed M2.5 x 12.7, with press-fit bush	63-480

4.7.4.2 Superior EMC Level

- **Scope of delivery:**
 - EMC flat front panel
 - Contact angle, incl. screws
 - EMC gasket for contact angle
 - EMC gasket for front extrusion/front panel
- Front panel screws, see below
 - Front panel width 42 HP = 4 screws
 - Front panel width 63 HP = 6 screws
 - Front panel width 84 HP = 8 screws

2 U - 6 U



4.7.4.2 Superior EMC Level

Width	Part-No. 2 U	Part-No. 3 U	Part-No. 4 U	Part-No. 6 U
84 HP	21D284	21D384	21D484	21D684

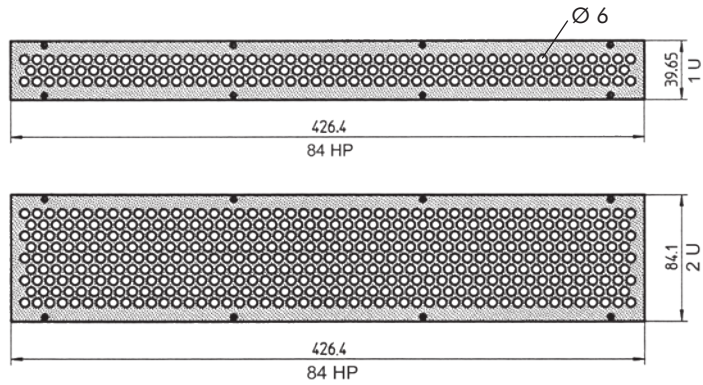
4.7.4.2.1 Front Panel Screws

Description	Part-No. 10 pcs.
Torx screws M2.5 x 11.3, size T8, with press-fit bush	63K480
Screw recessed M2.5 x 11.3, with press-fit bush	63-444
Screw cross recessed M2.5 x 12.7, with press-fit bush	63-480

4: Systemkit 12K

4.7.4.3 Perforated EMC Front Panel 84 HP

- Front anodised, rear conductive
- Advanced EMC level
- Width: 84 HP
- **Scope of delivery:**
 - Perforated flat front panel
- Front panel screws see below
- On-off switch see below



4.7.4.3 Perforated EMC Front Panel 84 HP

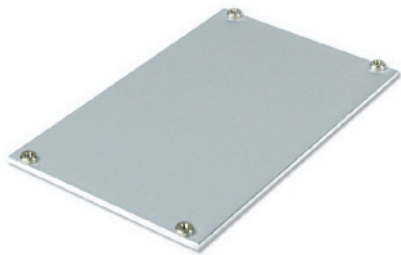
	Height		Air Passage	Switch Opening Part-No. without
1 U	39.65 mm	1.56"	4'100 mm ²	21C184-01
2 U	84.1 mm	3.31"	12'300/11'700 mm ²	21C284-01

Front Panel Screws

Description	Part-No. 10 pcs.
Torx screws M2.5 x 11.3, size T8, with press-fit bush	63K480
Screws recessed M2.5 x 11.3, with press-fit bush	63-444
Screws cross recessed M2.5 x 12.7, with press-fit bush	63-480

4.7.4.4 EMC Filler Panel without EMC-Gasket

- Front panel standard, solid
- Front clear anodised
- Rear conductive
- Basic level EMC
- **Scope of delivery:**
 - 1 front panel incl. press-fit bushes M2.5 (pressed-in)
- Front panel screws, see below
- Spacer see below



4.7.4.4 EMC Filler Panel without Gasket

Width	Part-No. 3 U	Part-No. 4 U	Part-No. 6 U
4 HP	21B304	-	-
10 HP	21B310	-	-
12 HP	21B312	-	-
16 HP	21B316	21B416	-
21 HP	21B321	21B421	-
42 HP	21B342	21B442	21B642
63 HP	21B363	21B463	-
84 HP	21B384	21B484	21B684

Front Panel Screws

- Front panel width up to 9 HP = 2 screws; ≥ 10 HP = 4 screws

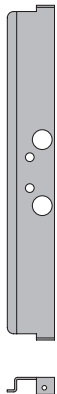
Description	Part-No.
Torx screw, M2.5 x 11.3, size T8	5443-08
Round head screw, cross recessed M2.5 x 12.7	61-287

4.7.4.4.1 Spacer for EMC Front Panel Flat

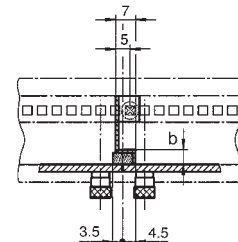
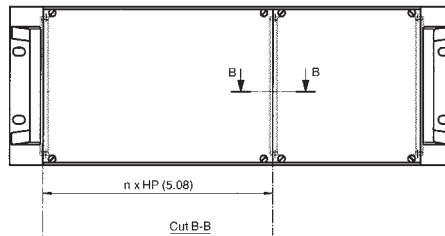
- EMC-Level: Advanced
- **Scope of delivery:**
 - 1 spacer incl. gasket
 - 2 Torx sheet metal screws 2.9 x 6.5; size T 10



Height	Part-No.
3 U	81K023
4 U	81K024
7 U	81K027



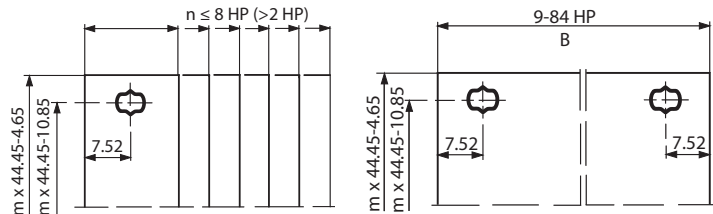
Holes in some cases needed for mounting telescopic rails



4: Systemkit 12K

4.7.4.5 Flat Front Panels

- For sub racks and enclosures, solid
- Aluminium 2.5 mm, clear anodised (non-conductive)
- **Scope of delivery:**
 - Flat front panel
- Front panel screws, see below



4.7.4.5.1 Flat Front Panels for Sub Racks and Enclosures, Solid

Width	B		Height		Part-No.					
	mm	inch	1 U 39.8 mm	ca. 1 U* 42.15 mm	2 U 84.2 mm	3 U 128.7 mm	4 U 173.1 mm	6 U 262.0 mm	7 U 306.5 mm	9 U 395.4 mm
2 HP	10.0	0.39	-	-	-	21N302	-	21N602	-	-
3 HP	15.2	0.59	-	-	-	21N303	21N403	21N603	-	-
4 HP	20.1	0.79	-	-	-	21N304	21N404	21N604	-	21N904
5 HP	25.2	0.99	-	-	-	21N305	21N405	21N605	-	-
6 HP	30.3	1.19	-	-	-	21N306	21N406	21N606	-	-
7 HP	35.3	1.38	-	-	-	21N307	21N407	21N607	-	-
8 HP	40.4	1.59	-	-	-	21N308	21N408	21N608	-	-
10 HP	50.6	1.99	-	-	-	21N310	21N410	21N610	-	-
11 HP	55.7	2.19	-	-	-	21N311	-	-	-	-
12 HP	60.7	2.38	-	-	-	21N312	21N412	21N612	-	-
14 HP	70.9	2.79	-	-	-	21N314	21N414	21N614	-	-
16 HP	81.1	3.19	-	-	-	21N316	21N416	21N616	-	-
20 HP	101.4	3.59	-	-	-	21N320	21N420	21N620	-	-
21 HP	106.5	4.19	-	-	-	21N321	-	21N621	-	-
28 HP	142.0	5.59	-	-	-	21N328	-	21N628	-	-
32 HP	162.3	6.38	-	-	-	21N332	21N432	-	-	-
42 HP	213.1	8.38	-	-	21N242	21N342	21N442	21N642	-	-
52 HP	263.9	10.38	-	-	-	21N352	21N452	21N652	-	-
63 HP	319.8	12.59	-	-	21N263	21N363	21N463	21N663	-	-
81 HP	411.3	16.19	-	-	21N281	21N381	21N481	-	-	-
84 HP	426.5	16.79	21N184	21N084*	21N284	21N384	21N484	21N684	21N784	21N984

* Coverplates for 1 U fan opening

Front Panel Screws

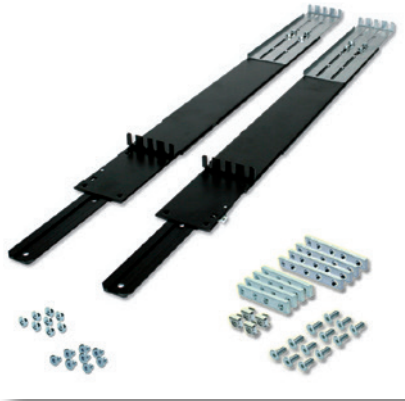
- Set of 10 screws, with screw retainer

Description	Part-No.
	10 pcs.
Torx screws M2.5 x 11.3, size T8 with plastic screw retainer	63K159
Rounded head screws recessed M2.5 x 11.3 with plastic screw retainer	63-159

4.7.5 Telesopic Rails

4.7.5.1 Telesopic Rails, Set (Load Capacity up to 60 kg/Pair)

- Telesopic rails, suitable for all heights
- **Scope of delivery:**
 - 2 telesopic rails
 - Mounting bracket
 - Assembly material for mounting into cabinet and on module



4.7.5.1 Telesopic Rails, Set (Load Capacity up to 60 kg/Pair)

Max. withdraw	Usable depth		Part-No.
	min.	max.	
511.2 mm	463 mm	681.8 mm	65-051
596.4 mm	564.6 mm	783.4 mm	65-052
719.6 mm	666.2 mm	885.0 mm	65-053

Rugged telesopic rails (load capacity up to 90 kg/pair) on request

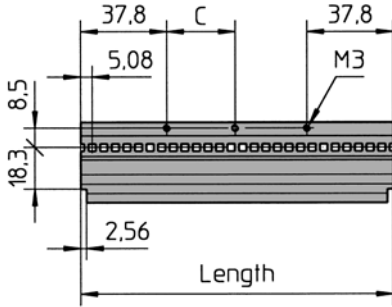
4: Systemkit 12K

4.8 Step G: Extrusions

4.8.1 Front Extrusions

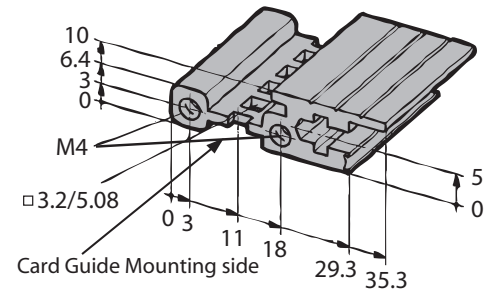
4.8.1.1 Front Extrusion, VME

- For sub racks and cases front
- Accept 2 x 6 mm tapped strips
- **Scope of delivery:**
 - 1 front extrusion without assembly material



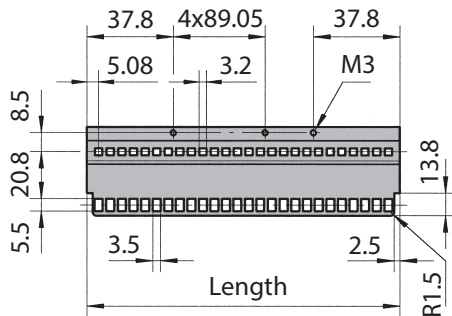
4.8.1.1 EMC Version

Length for HP	mm		Holes n x C	Part-No. clear passivated
	mm	inch		
84	431.8	17.00	4 x 89.05	66-111-153



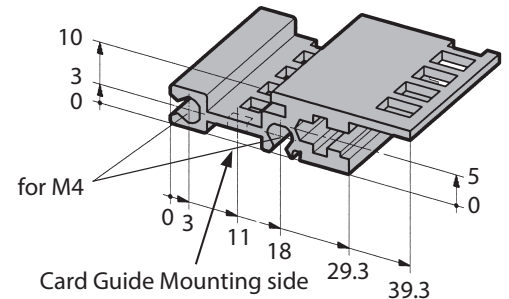
4.8.1.2 Front Extrusion, CPCI / VME64x

- Front separation extrusion according to IEEE standard
- Accept 2 x 6 mm tapped strips
- **Scope of delivery:**
 - 1 front extrusion without assembly material



4.8.1.2 Version for Systemkit 12K according to IEEE standard

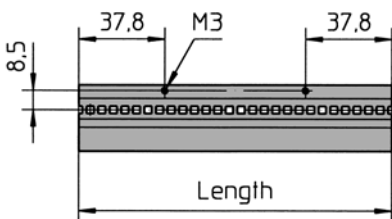
Length for HP	mm		Part-No. clear passivated
	mm	inch	
84	431.8	17.00	66-677-33



4.8.2 Internal Extrusions

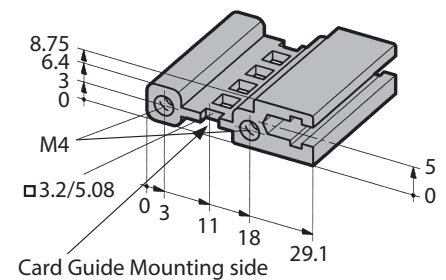
4.8.2.1 Internal Extrusion 66-193 for Insulated Backplane Mounting

- For mounting backplanes in sub racks
- Insulating strip see 4.8.2.7
- Accept 1.8 x 5 mm tapped strips
- **Scope of delivery:**
 - 1 extrusion without assembly material



4.8.2.1 Standard Version

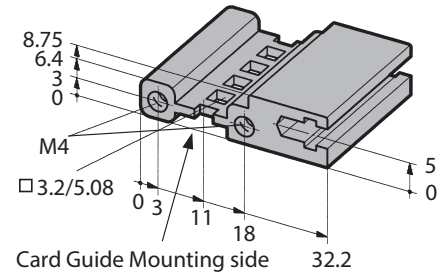
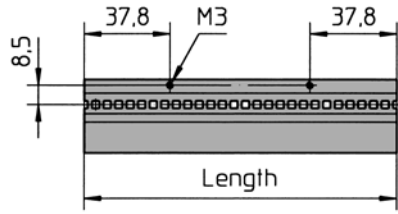
Length for HP	mm		Part-No. clear passivated
	mm	inch	
84	431.8	17.00	66-193-23



4: Systemkit 12K

4.8.2.2 Internal Extrusion 66-194 for Conductive Backplane Mounting

- For mounting backplanes without an insulating strip
- Accept 1.8 x 5 mm tapped strips
- **Scope of delivery:**
 - 1 extrusion without assembly material

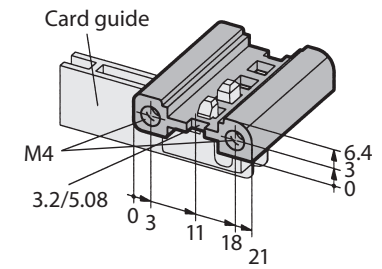
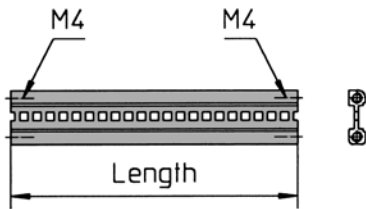


4.8.2.2 Internal Extrusion 66-194 for Conductive Backplane Mounting

Length for HP	mm	inch	Part-No. clear passivated
84	431.8	17.00	66-194-23

4.8.2.3 Internal Extrusion 66-138 for Card Guides

- For mounting card guides
- Tapped strip not required
- **Scope of delivery:**
 - 1 extrusion without assembly material

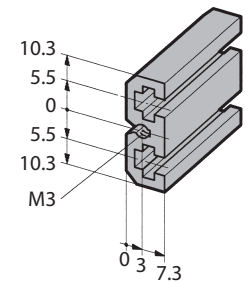


4.8.2.3. Standard Version

Length for HP	mm	inch	Part-No. clear passivated
84	431.8	17.00	66-138-23

4.8.2.5 Double Extrusion 66-192 for Insulated Backplane Mounting

- For mounting backplanes, matches 66-193, 66-288
- For use with insulating strips
- Insulating strip see 4.8.2.7
- Accept 2 x 6 mm tapped strips
- **Scope of delivery:**
 - 1 extrusion without assembly material



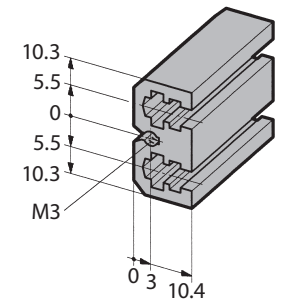
4.8.2.4 Double Extrusion 66-192 for Insulated Backplane Mounting

Length for HP	mm	inch	Part-No. clear passivated
84	426.7	16.79	66-192-23

Assembly material with adapter: 63-175 (63K175 with Torx)

4.8.2.5 Double Extrusion 66-195 for Conductive Backplane Mounting

- For mounting backplanes without insulating strips
- Matches 66-194, 66-289, 66-290
- Accept 2 x 6 mm tapped strips
- **Scope of delivery:**
 - 1 extrusion without assembly material



4.8.2.5 Double Extrusion 66-195 for Conductive Backplane Mounting

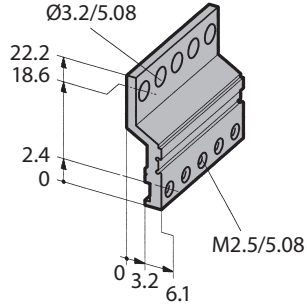
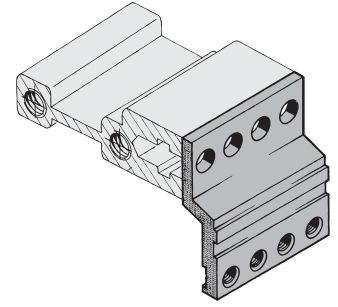
Length for HP	mm	inch	Part-No. clear passivated
84	426.7	16.77	66-195-23

Assembly material with adapter: 63-175 (63K175 with Torx)

4: Systemkit 12K

4.8.2.6 Edge Connector Extrusion 66-147

- For use with extrusions for backplanes 66-193
- **Scope of delivery:**
 - Edge connector extrusion without assembly material



4.8.2.6 Edge Connector Extrusion

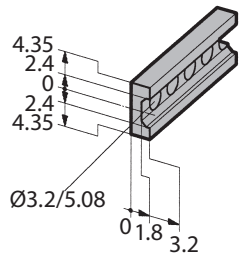
Length for HP	mm		Part-No.	
	mm	inch	clear passivated	raw
8	40.6	1.59	66-147-40	-
18	91.4	3.59	66-147-41	-
28	142.2	5.60	66-147-42	-
42	213.4	8.40	66-147-63	-
63	320.0	12.60	66-147-65	-
81	411.5	16.20	66-147-22	-
84	426.7	16.80	66-147-52	-
	1350.0	53.14	-	66-147-19

Assembly Material

Description	Part-No.
Assembly material M2.5 (for 2 supplementary extrusions)	63-214

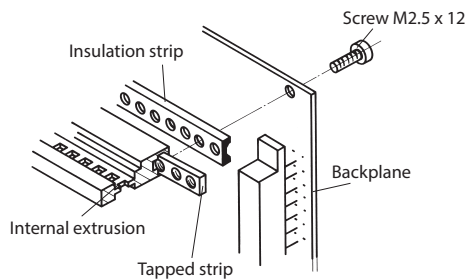
4.8.2.7 Insulating Strips 66-901

- Plastic grey
- In use with extrusions 66-112, 66-192, 66-193, 66-288
- **Scope of delivery:**
 - 1 insulating strip without assembly material



4.8.2.7 Insulating Strips 66-901

Length for HP	mm	inch	Part-No.
42	216.44	8.52	66-901-20
63	323.12	12.72	66-901-21
81	414.56	16.32	66-901-22
84	429.80	16.92	66-901-23



Mounting with Insulation Strips

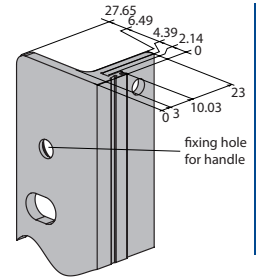
Description	Part-No.
Cross recessed cylinderhead earthing screw M2.5 x 12	5325-12

4: Systemkit 12K

4.8.3 Height Extrusions

4.8.3.1 Height Extrusions 19" 66-275

- 19" height extrusion type Systemkit 12K
- For standard side panel 2 mm
- Shape to direct mounting of the EMC-gasket 81-062-XX
- **Scope of delivery:**
 - 1 height extrusion without assembly material

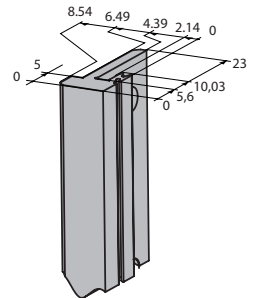


4.8.3.1 Height Extrusions 19" 66-275

Length for U	mm	inch	Part-No. clear passivated fixing hole for handle	
			without	with
3	132.5	5.20	66-275-23	66-275-33
4	177.0	6.96	66-275-24	66-275-34
6	265.9	10.46	66-275-26	66-275-36
7	310.3	12.21	66-275-27	66-275-37
9	399.2	15.71	-	66-275-39

4.8.3.2 Height Extrusions 66-274

- 19" height extrusion type Systemkit 12K
- For standard side panel 2 mm
- Shape to direct mounting of the EMC-gasket 81-062-XX
- **Scope of delivery:**
 - 1 height extrusion without assembly material



4.8.3.2 Height Extrusions 66-274

Length for U	mm	inch	Part-No.
			clear passivated
3	132.5	5.20	66-274-23
4	177.0	6.96	66-274-24
6	265.9	10.46	66-274-26
7	310.3	12.21	66-274-27
9	399.2	15.71	66-274-29

4.8.3.3 Height Extrusions with Cut-out for Telescopic Rails

- 19" height extrusion type Systemkit 12K
- For standard side panel 2 mm
- Cut-out for telescopic rails
- Shape to direct mounting of the EMC-gasket 81-062-XX
- **Scope of delivery:**
 - 1 height extrusion without assembly material



4.8.3.3 Height Extrusions with Cut-out for Telescopic Rails

Length for U	mm	inch	Part-No. clear passivated	
			left	right
3	132.5	5.20	66-274-63	
4	177.0	6.96	66-274-64	
6	265.9	10.46	66-274-66	66-274-76
7	310.3	12.21	66-274-67	66-274-77
9	399.2	15.71	66-274-69	66-274-79