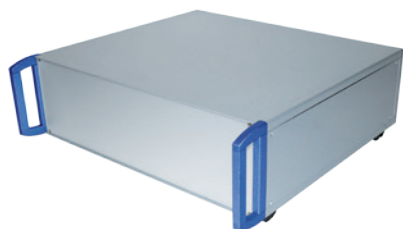


# 3: Stylebox 15 e-motion



## 3.1 Stylebox 15 Overview

B | 3\_3

## 3.2 Stylebox 15 e-motion

B | 3\_8

3.2.1 Width

B | 3\_9

3.2.2 Height Bezels

B | 3\_9

3.2.3 Depth

B | 3\_10

3.2.4 Top Covers

B | 3\_10

3.2.5 Bottom Covers

B | 3\_11

3.2.6 Side Panels

B | 3\_12

3.2.7 Portable Desktop Handles

B | 3\_12

3.2.8 Tower Feet

B | 3\_13

3.2.9 Drawings Stylebox 15 e-motion

B | 3\_15

## 3.3 Adaptation Kits

B | 3\_17

3.3.1 Adaptation Kits a

B | 3\_17

3.3.2 Adaptation Kits b

B | 3\_18

3.3.3 Adaptation Kits c

B | 3\_18

3.3.4 Adaptation Kits d

B | 3\_19

3.3.5 Adaptation Kits e

B | 3\_19

3.3.6 Adaptation Kits f

B | 3\_20

3.3.7 Edge Connector Extrusion

B | 3\_20

## 3.4 Assembly Accessories

B | 3\_21

3.4.1 Front Sub Division Vertical for 6 U System or 6 U Assembly

B | 3\_21

3.4.2 EMC Front Sub Divisions Vertical Small

B | 3\_22

3.4.3 Horizontal Card Mounting Kits for Double Eurocards (6 U)

B | 3\_22

3.4.4 EMC Horizontal Card Mounting Kit for Double Eurocards (6 U)

B | 3\_24

3.4.5 EMC Front Sub Division

B | 3\_25

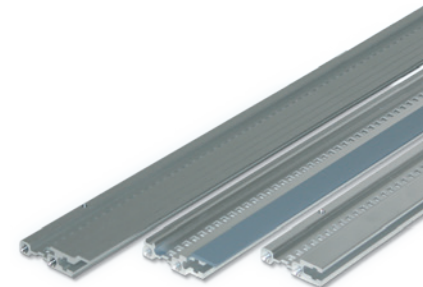
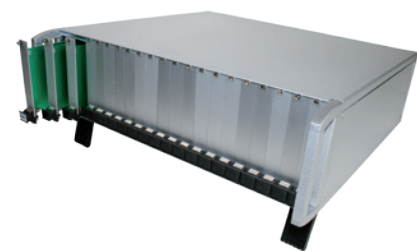
3.4.6 Mounting Chassis

B | 3\_27

3.4.7 EMC Shielding

B | 3\_30





## 3.5 General Accessories

**B | 3\_33**

3.5.1 Card Guides IEC

B | 3\_33

3.5.2 Card Guides acc. to IEEE

B | 3\_35

## 3.6 Front Panels

**B | 3\_38**

3.6.1 Flat Front Panels

B | 3\_38

3.6.2 EMC Flat Front Panels

B | 3\_39

3.6.3 Fan Front Panels

B | 3\_42

3.6.4 Hinged Front Panels

B | 3\_44

3.6.5 Heat Sink Front Panels

B | 3\_46

3.6.6 Plug-In Units acc. to IEC

B | 3\_48

3.6.7 EMC Plug-In Units acc. to IEC

B | 3\_51

3.6.8 Plug-In Units acc. to IEEE

B | 3\_55

## 3.7 Extrusions

**B | 3\_59**

3.7.1 Front Extrusions

B | 3\_59

3.7.2 Internal Extrusions

B | 3\_63

3.7.3 Insulating Strips 66-901

B | 3\_66

# 3: Stylebox 15 e-motion



## 3.1 Stylebox 15 Overview

- The Elma Stylebox 15 case system consists of four longitudinal sections and two side panels as loadbearing frame and casing
- The top and bottom covers are provided with spring catches, which engage in special slots on the longitudinal sections. They are also screwed at the side to increase the torsional rigidity of the case
- The front of the case can be fitted as required with cover panels, front handles or 19" fixing brackets. This permits subsequent conversion from a desktop case to a 19" module unit and vice-versa
- The mounting dimensions at front and rear comply with IEC 60297
- The side panels are passivated. The supporting surfaces of the longitudinal sections and top/bottom plates are clear passivated. This provides a large contact area for long-term EMI/RFI protection
- The top design and the variety of sizes and models, together with the full range of Elma accessories, are ideal solutions for a wide range of applications, including measuring units, controllers, computer systems, etc.

## Sturdy, flexible and portable

### Technical features

- Superior EMC-shielding options available
- Easy conversion from desktop to 19" rack mount case
- Dimensions to IEC 60297
- Simple assembly
- Easy access
- Elegant design

### Options

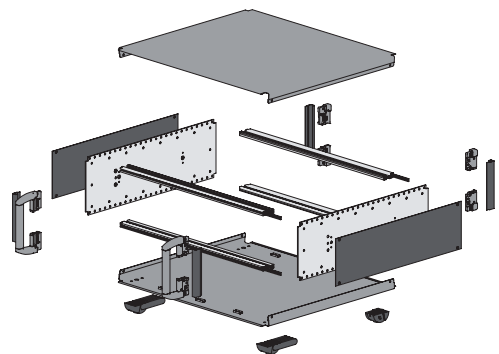
- Numerous accessories
- Internal mounting chassis
- Horizontal and vertical insertion of eurocards
- Cooling

### Applications

- Measurement and test instruments
- Lab and field service instruments
- Controls
- Computers

### Colours

- Stylebox 15 e-motion
  - White (RAL 9016) and silver berluran
- Other colours available upon request



### Stylebox 15 e-motion

- Extrusions and inner sides aluminium
- Covers of galvanised steel
- Basic EMC-shielding as standard

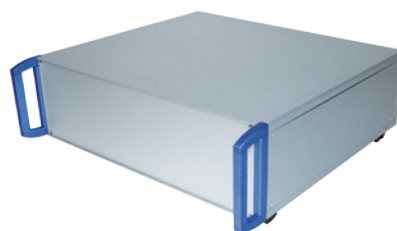
# 3: Stylebox 15 e-motion

## Types and Sizes

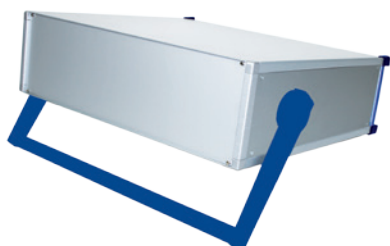
Desktop Case without Handles



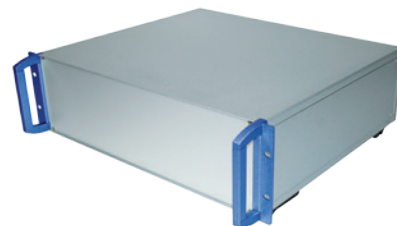
Desktop Case with Front Handles



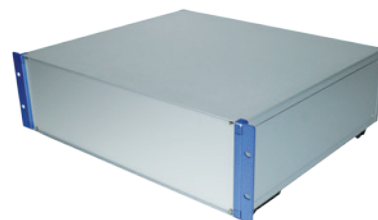
Portable Desktop Case



19" Case with Front Handles



19" Case without Front Handles



Width	42 HP	63 HP	84 HP
Height	e-motion	e-motion	e-motion
2 U			
3 U			
4 U			
6 U			
7 U			

Depth  245 mm 9.64"  305 mm 12.00"  395 mm 15.55"  500 mm 19.68"

# 3: Stylebox 15 e-motion

## EMC

“Electromagnetic compatibility is the ability of a system to operate in the intended environment without causing or suffering unacceptable degradation of performance due to unintentional electromagnetic radiation or response.”

The EMC characteristics of a system therefore consist of an appropriate immunity from interference (noise immunity) and a limited emission of interference (noise emission).

Elma’s EMC concept describes three levels of electromagnetic shielding performance (Performance Level). The attenuation levels will simplify the selection of sub racks for the user.

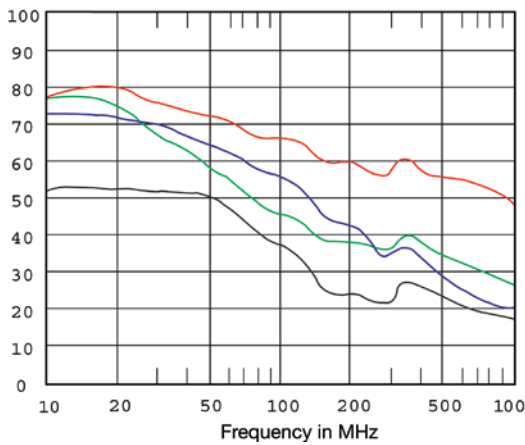
Test setup: The first measurement E1 is without the enclosure. The next measurement E2 is made with the transmitting antenna installed inside the enclosure. The difference between the received signal without and with the enclosure represents the shielding effectiveness in dB.

Performance Level	30 - 230 MHz	230 - 1000 MHz	1000 - 2000 MHz
1 / Elma: Basic level	20 dB	10 dB	0 dB
2 / Elma: Advanced level	40 dB	30 dB	20 dB
3 / Elma: Superior level	60 dB	50 dB	40 dB

The standard configuration will provide you with a basic (Stylebox 15 Standard and e-motion) or an advanced EMC level (Stylebox 15 Smart). If you require an advanced or superior EMC level for your system, you need to order **additional EMC parts**. Throughout the catalogue we have put all EMC parts **in a yellow table**.

### Typical Attenuation

Typical shielding effectiveness in dB



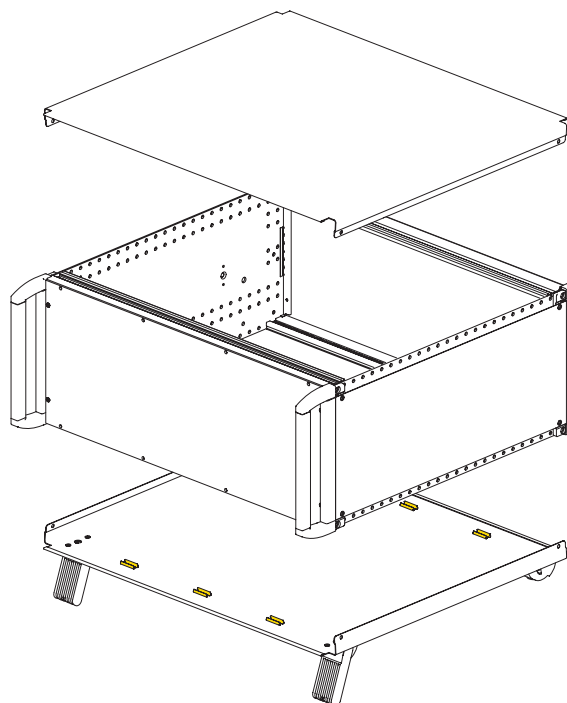
- EMC basic level      Case size 4 U-x-42 HP-x-245 mm (9.64")  
with standard front panels  
(cover panels perforated and unperforated)
- EMC basic level      Case size 4 U-x-84 HP-x-395 mm (15.55")  
with standard front panels  
(cover panels perforated and unperforated)
- Advanced EMC level      Case size 4 U-x-84 HP-x-395 mm (15.55")  
with EMC front panels and gasket set for advanced EMC level  
(cover panels perforated and unperforated)
- Superior EMC level      Case size 4 U-x-84 HP-x-395 mm (15.55")  
with EMC front panels and gasket set for superior EMC level  
(cover panels perforated and unperforated)

# 3: Stylebox 15 e-motion

## EMC Layout & Configuration Options

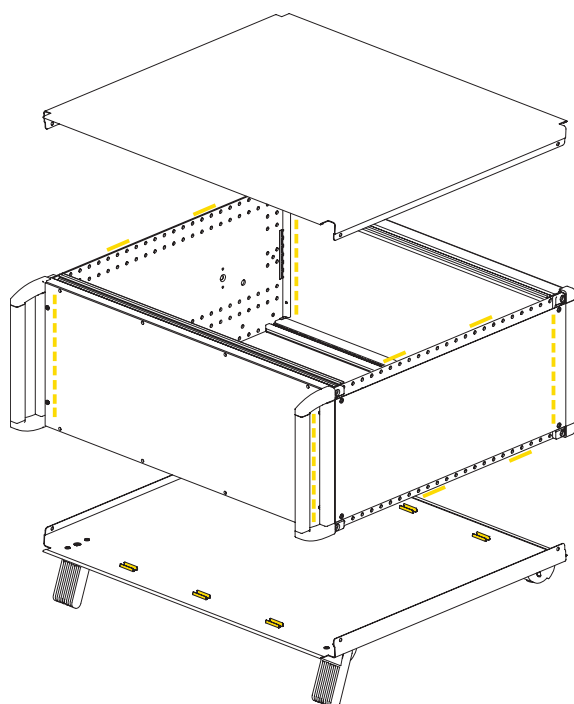
### Basic Level

Stylebox 15 e-motion  
Size 4 U x 84 HP x 395 mm  
with standard front panels  
(cover plates perforated or unperforated)



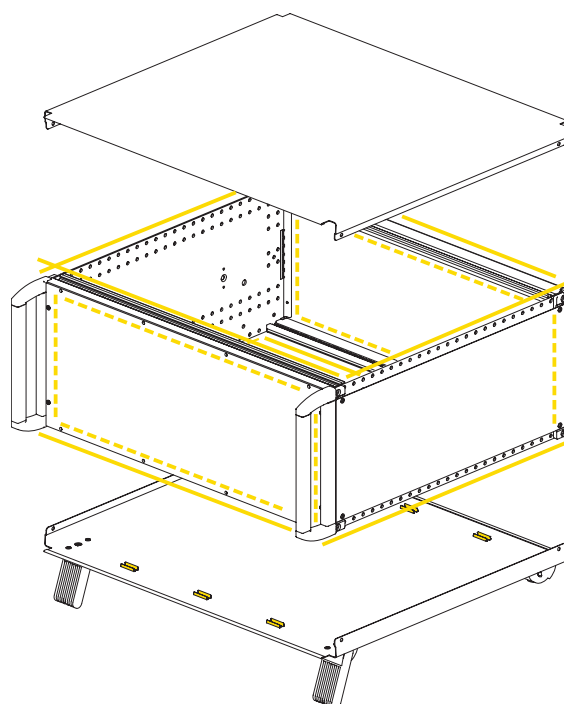
### Advanced Level

Stylebox 15 e-motion  
Size 4 U x 84 HP x 395 mm  
with EMC front panels and gasket kit  
(cover plates perforated or unperforated)



### Superior Level

Stylebox 15 e-motion  
Size 4 U x 84 HP x 395 mm  
with EMC front panels and gasket kit  
(cover plates perforated or unperforated)



# 3: Stylebox 15 e-motion

## Configuration



### Stylebox 15 e-motion

#### Frame

##### Width 1.2.1

- 42 HP / 63 HP / 84 HP

##### Height 1.2.2

- 2 U / 3 U / 4 U / 6 U / 7 U  
- Without / with handles  
- Portable desktop  
- 19" with or without front handles

##### Depth 1.2.3

- 245 mm / 305 mm / 395 mm / 500 mm

#### Covers

##### Top Cover 1.2.4

- Solid / perforated  
- Width: 42 HP / 63 HP / 84 HP

##### Bottom Cover 1.2.5

- Solid / perforated  
- Width: 42 HP / 63 HP / 84 HP

##### Feet

##### Side Panels 1.2.6

- Height: 2 U / 3 U / 4 U / 6 U / 7 U  
- Solid / solid for portable desktop  
- Depth: 245 mm / 305 mm / 395 mm / 500 mm

##### Portable Desktop Handle 1.2.7

##### Tower Feet 1.2.8

##### Adapation Kits 1.3

##### Assembly Accessories 1.4

##### General Accessories 1.5

##### Front Panels 1.6

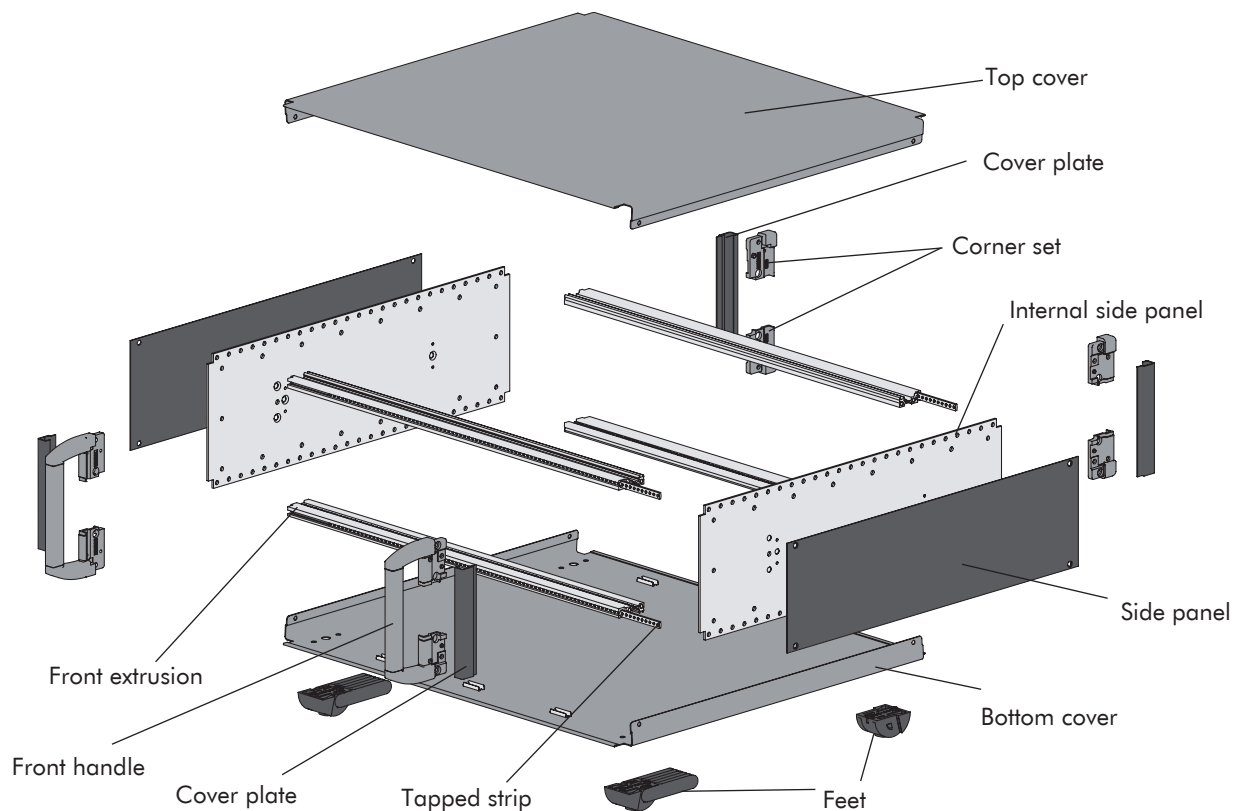
##### Extrusions 1.7

# 3: Stylebox 15 e-motion



## 3.2 Stylebox 15 e-motion

- Extrusions and inner sides aluminium
- Covers of galvanised steel
- Advanced EMC-shielding as standard
- Identical front and rear for insertion of boards, modules, etc.
- Dimensions to IEC 60297
- Top design
- Simple assembly
- Sturdy
- Conductive contact surfaces
- Visible surfaces are powder-coated
- Colour: white (RAL 9016) and silver berluran





# 3: Stylebox 15 e-motion

## 3.2.1 Width

- For Stylebox 15 e-motion
- Extrusions: Aluminium, conductive
- **Scope of delivery:**
  - 4 front/rear extrusions
  - 4 tapped strips M 2.5
  - 1 set of 16 screws (Torx M4 x 10, T20)

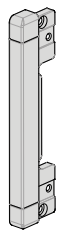


### 1.2.1 Width

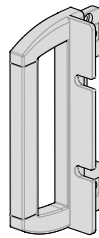
Description	42 HP	63 HP	84 HP
IEC Application	15S035	15S036	15S037

## 3.2.2 Height Bezels

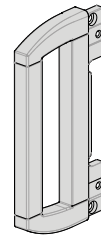
- For Stylebox 15 e-motion
- No additional coverplate has to be ordered when using 19" bracket version
- Die cast parts and extrusions: Aluminium powder coated or wet painted, contact area conductive
- **Scope of delivery:**
  - 1 height bezel
- 4 sets have to be ordered (2 for front and 2 for rear side)



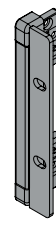
Corner set plus coverplate



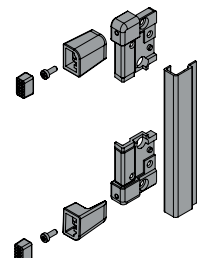
Front handle plus coverplate



19" bracket with front handle



19" bracket



Rear feet corner set plus coverplate

## 3.2.2 Height Bezels

Description	Colour	2 U	3 U	4 U	6 U
Corner set (without handles)	white	15-242-70	15-243-70	15-244-70	15-246-70
	silver	15-242-80	15-243-80	15-244-80	15-246-80
for design front plate	white	15-242-01-70	15-243-01-70	15-244-01-70	15-246-01-70
	silver	15-242-01-80	15-243-01-80	15-244-01-80	15-246-01-80
Front handle	white	15-222-70	15-223-70	15-224-70	15-226-70
	silver	15-222-80	15-223-80	15-224-80	15-226-80
for design front plate	white	15-222-01-70	15-223-01-70	15-224-01-70	15-226-01-70
	silver	15-222-01-80	15-223-01-80	15-224-01-80	15-226-01-80

# 3: Stylebox 15 e-motion

## 3.2.2 Height Bezels (continued)

19" bracket with front handle	white silver	15-232-70 15-232-80	15-233-70 15-233-80	15-234-70 15-234-80	15-236-70 15-236-80
for design front plate	white silver	15-232-01-70 15-232-01-80	15-233-01-70 15-233-01-80	15-234-01-70 15-234-01-80	15-236-01-70 15-236-01-80
19" bracket (without handles)	white silver	15-182-70 15-182-80	15-183-70 15-183-80	15-184-70 15-184-80	15-186-70 15-186-80
for design front plate	white	15-212-70	15-213-70	15-214-70	15-216-70
Rear feet corner set	black	15S090	15S090	15S090	15S090

## 3.2.3 Depth

- For Stylebox 15 e-motion
- 2.0 mm Aluminium clear passivated
- **Scope of delivery:**
  - 1 Internal side panel
- 2 pieces have to be ordered (for left and right side)



### 3.2.3 Depth

For Height	245 mm 9.64"	305 mm 12.00"	395 mm 15.55"	500 mm 19.68"
2 U	15-520	15-522	15-524	-
3 U	15-530	15-532	15-534	15-536
4 U left	15-540	15-542	15-544	15-546
4 U right	15-541	15-543	15-545	15-547
6 U	-	15-562	15-564	15-566
7 U	-	15-572	15-574	15-576

## 3.2.4 Top Covers

- For Stylebox 15 e-motion
- Symmetrical construction: Perforation can be used at front or rear
- 0.75 mm sheet steel powder coated or wet painted, contact area conductive
- **Scope of delivery:**
  - 1 top cover



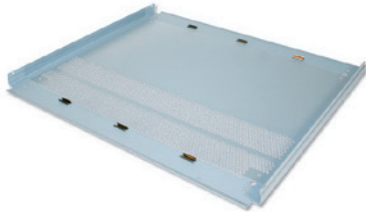
### 3.2.4 Top Covers

Description	Width	Depth			
		245 mm 9.64"	305 mm 12.00"	395 mm 15.55"	500 mm 19.68"
Solid, white	42 HP	15B201-70	15B202-70	15B203-70	15B204-70
Solid, silver		15B201-80	15B202-80	15B202-80	15B202-80
Perforated, white		15B201-71	15B202-71	15B203-71	15B204-71
Perforated, silver		15B201-81	15B202-81	15B203-81	15B204-81
Solid, white	63 HP	15B206-70	15B207-70	15B208-70	15B209-70
Solid, silver		15B206-80	15B207-80	15B208-80	15B209-80
Perforated, white		15B206-71	15B207-71	15B208-71	15B209-71
Perforated, silver		15B206-81	15B207-81	15B208-81	15B209-81
Solid, white	84 HP	15B210-70	15B212-70	15B213-70	15B214-70
Solid, silver		15B210-80	15B212-80	15B213-80	15B214-80
Perforated, white		15B210-71	15B212-71	15B213-71	15B214-71
Perforated, silver		15B210-81	15B212-81	15B213-81	15B214-81

# 3: Stylebox 15 e-motion

## 3.2.5 Bottom Covers

- For Stylebox 15 e-motion
- Symmetrical construction: Perforation can be used at front or rear
- 0.75 mm sheet steel powder coated or wet painted, contact area conductive
- **Scope of delivery:**
  - 1 Bottom cover without mounted feed
- Feet for bottom cover panel see 3.2.5.2



### 3.2.5.1 Bottom Covers

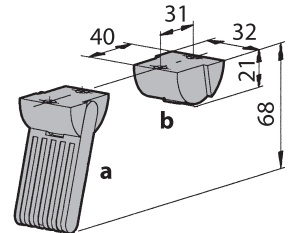
Description	Width	Depth			
		245 mm 9.64"	305 mm 12.00"	395 mm 15.55"	500 mm 19.68"
Solid, white	42 HP	15B301-70	15B302-70	15B303-70	15B304-70
Solid, silver		15B301-80	15B302-80	15B303-80	15B304-80
Perforated, white		15B301-71	15B302-71	15B303-71	15B304-71
Perforated, silver		15B301-81	15B302-81	15B303-81	15B304-81
Solid, white	63 HP	15B306-70	15B307-70	15B308-70	15B309-70
Solid, silver		15B306-80	15B307-80	15B308-80	15B309-80
Perforated, white		15B306-71	15B307-71	15B308-71	15B309-71
Perforated, silver		15B306-81	15B307-81	15B308-81	15B309-81
Solid, white	84 HP	15B310-70	15B312-70	15B313-70	15B314-70
Solid, silver		15B310-80	15B312-80	15B313-80	15B314-80
Perforated, white		15B310-71	15B312-71	15B313-71	15B314-71
Perforated, silver		15B310-81	15B312-81	15B313-81	15B314-81

### 3.2.5.2 Case Feet



#### 3.2.5.2 Case Feet Type 15

- With and without tilt feet
- Glass-fiber reinforced plastic, UL94 V-0
- Including screws 3.5 x 8
- Up to 30 kg carrying capacity per set
- **Scope of delivery:**
  - 2 + 2 case feet, incl. rubber inserts NBR
  - 8 Torx countersunk PT-screws 3.5 x 8, size T10



Description	Colour	Part-No.
Case feet 2 x <b>a</b> + 2 x <b>b</b>	Light grey (RAL 7035)	63K524
Case feet 2 x <b>a</b> + 2 x <b>b</b>	Black (RAL 9005)	63K526
Case feet 2 x <b>a</b> + 2 x <b>b</b>	Dark grey (special)	63K525

# 3: Stylebox 15 e-motion

## 3.2.6 Side Panels

- For Stylebox 15 e-motion
- Outer side, visible surface
- 0.75 mm sheet steel powder coated or wet painted
- **Scope of delivery:**
  - 1 side panel
- 2 pieces have to be ordered (for left and right side)
- Assembly material see below



### 3.2.6 Side Panels

Description	Depth		Height				
	mm	inch	2 U	3 U	4 U	6 U	7 U
Solid, white	245	9.64	15B601-70	15B606-70	15B610-70	-	-
Solid, silver			15B601-80	15B606-80	15B610-80	-	-
Solid, white for portable desktop			15B657-70	15B661-70	15B665-70	-	-
Solid, silver for portable desktop			15B657-80	15B661-80	15B665-80	-	-
Solid, white	305	12.00	15B602-70	15B607-70	15B612-70	15B622-70	15B627-70
Solid, silver			15B602-80	15B607-80	15B612-80	15B622-80	15B627-80
Solid, white for portable desktop			15B658-70	15B662-70	15B667-70	-	-
Solid, silver for portable desktop			15B658-80	15B662-80	15B667-80	-	-
Solid, white	395	15.55	15B603-70	15B608-70	15B613-70	15B623-70	15B628-70
Solid, silver			15B603-80	15B608-80	15B613-80	15B623-80	15B628-80
Solid, white for portable desktop			15B659-70	15B663-70	15B668-70	-	-
Solid, silver for portable desktop			15B659-80	15B663-80	15B668-80	-	-
Solid, white	500	19.68	-	15B609-70	15B614-70	15B624-70	15B629-70
Solid, silver			-	15B609-80	15B614-80	15B624-80	15B629-80
Solid, white for portable desktop			-	15B664-70	15B669-70	-	-
Solid, silver for portable desktop			-	15B664-80	15B669-80	-	-

### Assembly Material

- For 1 side panel

Description	Part-No
4 Torx countersunk screws M3 x 6, T10	63K800

## 3.2.7 Portable Desktop Handles

- For Stylebox 15 e-motion
- **Scope of delivery:**
  - 2 adapters
  - 2 side parts, black
  - 1 handle extrusion, soft feel
  - Assembly material, Torx



### 3.2.7 Portable Desktop Handles

Height	42 HP	63 HP	84 HP
2 HP	15S050	15S051	15S052
3/4 HP	15S053	15S054	15S055

# 3: Stylebox 15 e-motion

## 3.2.8 Tower Feet

- For Stylebox 15 e-motion
- Use of Stylebox 15 e-motion as a tower
- Feet mounted direct onto side panel
- Plastic and aluminium
- **Scope of delivery:**
  - 4 round feet, Ø 40 mm
  - 4 round head screws with integrated washer M3 x 8, Torx T10



### 3.2.8 Tower Feet

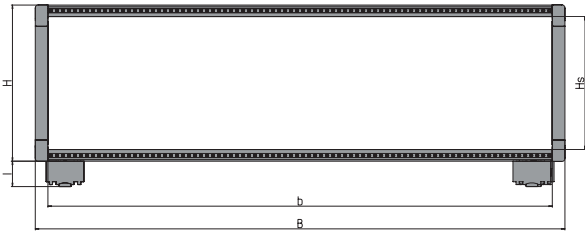
Description	Part-No.
Set of tower feet	63-880



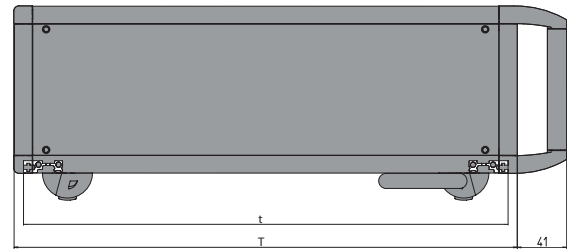
# 3: Stylebox 15 e-motion

## 3.2.9 Drawings Stylebox 15 e-motion

Front view



Side view



### Heights

U	H		Hs	
	mm	inch	mm	inch
2 U	88.05	3.46	68.05	2.67
3 U	132.50	5.21	112.50	4.42
4 U	176.95	6.96	156.95	6.17
6 U	265.85	10.46	245.85	9.67
7 U	310.3	12.21	290.30	11.43

### Widths

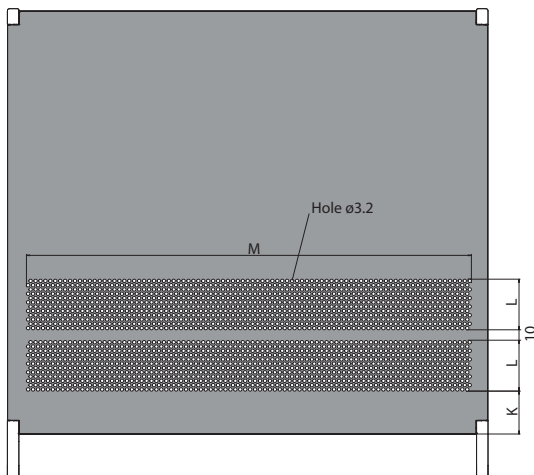
HP	B		b	
	mm	inch	mm	inch
42 HP	235.2	9.25	213.4	8.40
63 HP	341.9	13.46	320.1	12.60
84 HP	448.6	17.66	426.8	16.80

### Depths

T			t		
	mm	inch		mm	inch
245		9.64	232.6		9.15
305		12.00	292.6		11.51
395		15.55	382.6		15.06
500		19.68	487.6		19.19

Feet / Type	I	
	mm	inch
e-motion	21.5	0.89

Top view



Air Flow Stylebox 15 e-motion

### mm

HP	Depth	M		K	L
		mm	mm <sup>2</sup>		
42 HP	245/305/395/500	208	8680	40	47.2
63 HP	245/305/395/500	323	13510	40	47.2
84 HP	245/305/395/500	415	17370	40	47.2

### inch

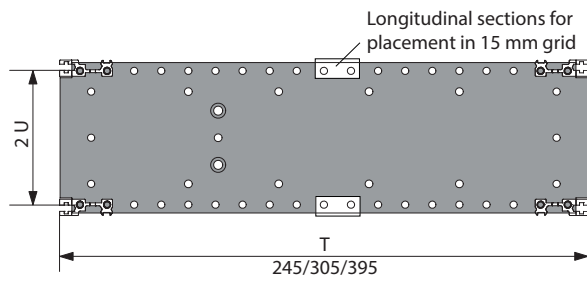
HP	Depth	M		K	L
		inch	sq. inch		
42 HP	9.64/12.00/15.55/19.68	8.18	13.46	1.57	1.85
63 HP	9.64/12.00/15.55/19.68	12.71	20.94	1.57	1.85
84 HP	9.64/12.00/15.55/19.68	16.33	26.92	1.57	1.85

Our ability to adapt existing components to your application, make Elma your preferred solution partner.

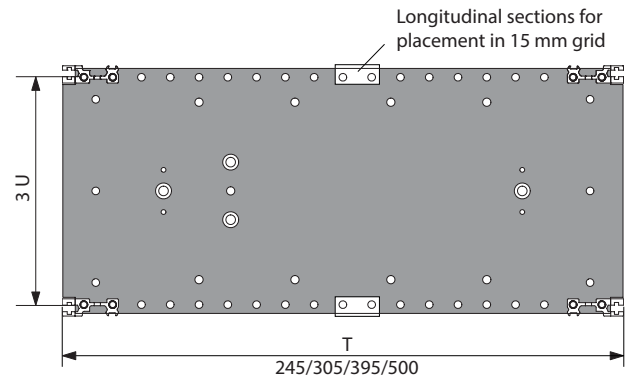
# 3: Stylebox 15 e-motion

## Drawings Side Panels

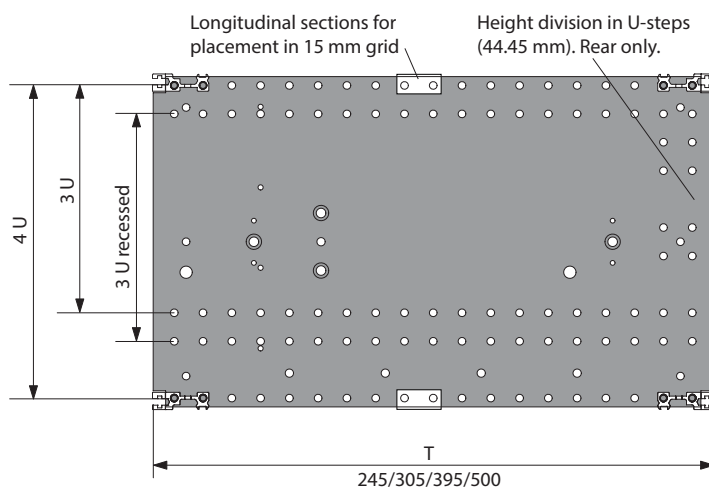
**2 U**



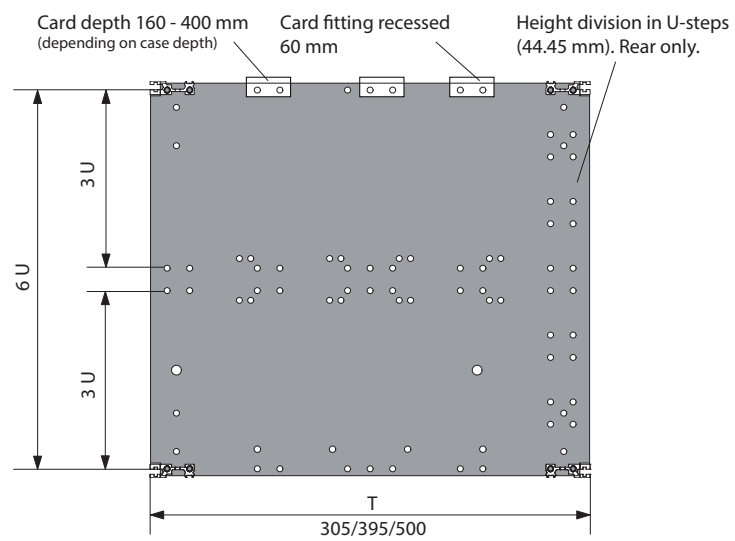
**3 U**



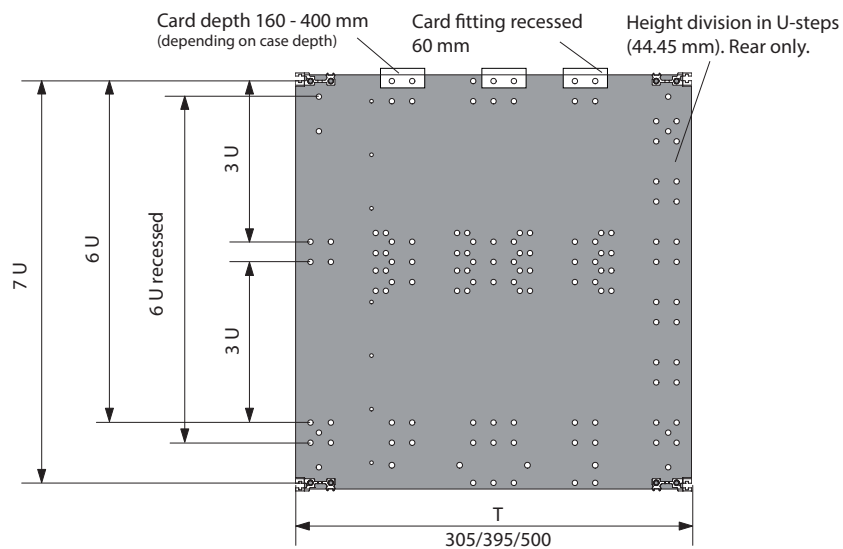
**4 U**



**6 U**



**7 U**







## 3.3 Adaptation Kits

- Adaptation kits are used to subdivide the Stylebox 15 both in its depths and heights
- The adaptation kits for the flush or recess mounted circuit boards or cassettes include the necessary internal extrusions and assembly materials
- Scope of delivery is shown in blue in the following illustrations

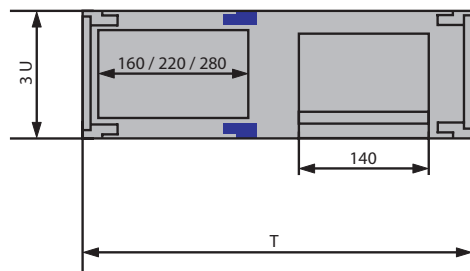
**Note:**

**Information for Adaptation Kits a - e:**

- 15-xxx-  for mounting:
- 6 = Extrusion 66-193, for insulated backplane mounting
  - 7 = Extrusion 66-194, for conductive backplane mounting

### 3.3.1 Adaptation Kits a

- **Range of Application:**
  - Single eurocard depth 160 – 280 mm
  - Motherboard
  - Modules, cassettes, plug-in units
  - Set for horizontal mounting of single, double triple eurocards, depth 160 – 280mm
  - Crossflow ventilation with 3 U fan module
  - Drive mechanism receptacles 3 1/2"/5 1/4"



#### 3.3.1 Adaptation Kits a

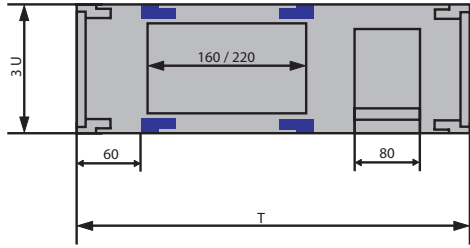
- **Scope of delivery:**
  - 2 internal extrusions
  - 2 insulating strips (-6 only)
  - 2 tapped strips M2.5
  - 1 set assembly material, Torx

Description	42 HP	63 HP	84 HP
Flush front-mounting of single eurocards	15K041-6	15K031-6	15K011-6
	15K041-7	15K031-7	15K011-7

# 3: Stylebox 15 e-motion

## 3.3.2 Adaptation Kits b

- **Range of Application:**
  - Recessed single eurocards, depth 160 – 220 mm
  - Without individual front panels
  - Motherboard



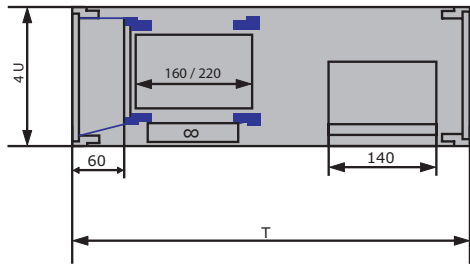
### 3.3.2 Adaptation Kits b

- **Scope of delivery:**
  - 4 internal extrusions
  - 2 insulating strips (-6 only)
  - 2 tapped strips M2.5
  - 1 set assembly material, Torx

Description	42 HP	63 HP	84 HP
Recessed mounting of single eurocards without front panels	15K042-6	15K032-6	15K012-6
	15K042-7	15K032-7	15K012-7

## 3.3.3 Adaptation Kits c

- Reduction Kit  $1\frac{1}{3}U + \frac{2}{3}U$  for 60 mm recessed mounting
- **Range of Application:**
  - Recessed mounting of single eurocards, depth 160 – 220 mm
  - With or without individual front panels
  - Max. fan height 26 mm
  - Motherboard
  - Modules, cassettes, plug-in units
  - Drive mechanism receptacles  $5\frac{1}{4}$ "



### 3.3.3.1 Adaptation Kits c

- **Scope of delivery:**
  - 2 internal extrusions
  - 2 front extrusions 66-111 (IEC) or 66-677 (IEEE)
  - 2 insulating strips (-6 only)
  - 1 auxiliary cover top
  - 1 auxiliary cover bottom
  - 4 tapped strips M2.5
  - 1 set assembly material, Torx

Description	HP	Part-No.	
		IEC	IEEE
Adaptation kit reduction, solid, without fan panel	84 HP	15K050-6	15K060-6
		15K050-7	15K060-7
Adaptation kit reduction, perforated*, without fan panel		15K051-6	15K061-6
		15K051-7	15K061-7
Adaptation kit reduction, perforated*, with fan panel		15K052-6	15K062-6
		15K052-7	15K062-7

\*only bottom part ( $\frac{2}{3}U$ ) is perforated

### 3.3.3.2 Additional Fan Plate

- For easy access and maintenance of the fans
- **Scope of delivery:**
  - 1 fan plate
  - 8 milled edge screws M3 x 5, Torx T10

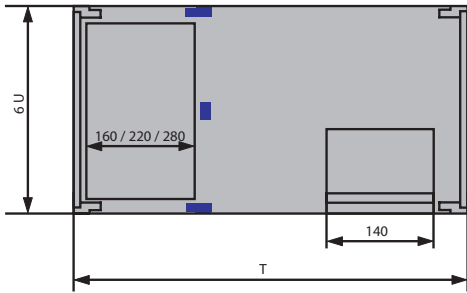
Description	Part-No.
Additional fan plate incl. 1 set assembly material	12K737

# 3: Stylebox 15 e-motion

## 3.3.4 Adaptation Kits d

**Range of Application:**

- Double eurocards, depth 160 – 280 mm
- Motherboard
- Modules, cassettes, plug-in units
- Drive mechanism receptacles 3 1/2" / 5 1/4"



### 3.3.4 Adaptation Kits d

**Scope of delivery:**

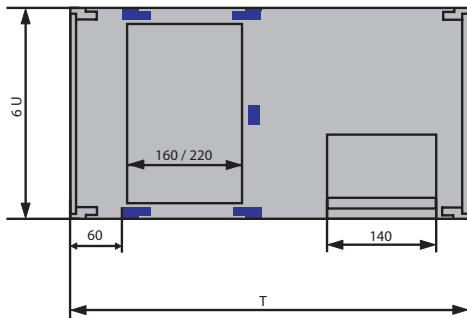
- 2 internal extrusions
- 1 centre extrusion
- 4 insulating strips
- 4 tapped strips M2.5
- 2 sets assembly material, Torx

Description	42 HP	63 HP	84 HP
Flush front-mounting of double eurocards	15K044-6	15K034-6	15K014-6

## 3.3.5 Adaptation Kits e

**Range of Application:**

- Recessed mounting of double eurocards, depth 160 – 220 mm
- Without individual front panels
- Motherboard



### 3.3.5 Adaptation Kits e

**Scope of delivery:**

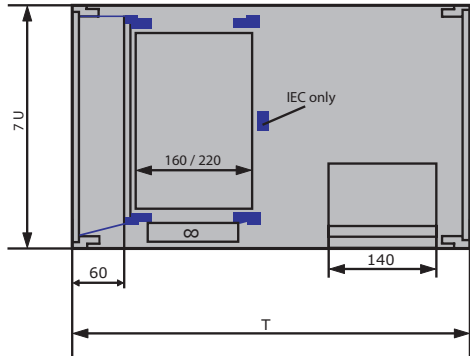
- 4 internal extrusions
- 1 centre extrusion
- 4 insulating strips
- 4 tapped strips
- 2 set assembly material, Torx

Description	42 HP	63 HP	84 HP
Recessed mounting of double eurocards without front panels	15K045-6	15K035-6	15K015-6

# 3: Stylebox 15 e-motion

## 3.3.6 Adaptation Kits f

- Reduction Kit  $\frac{1}{3}$ U +  $\frac{2}{3}$ U for 60 mm recessed mounting
- **Range of Application:**
  - Recessed mounting of double eurocards, depth 160 – 220 mm
  - With or without individual front panels
  - Max. fan height 26 mm
  - Motherboard
  - Modules, cassettes, plug-in units
  - Drive mechanism receptacles  $5\frac{1}{4}$ "



### 3.3.6.1 Adaptation Kits c

- **Scope of delivery:**
  - 2 internal extrusions
  - 2 front extrusions 66-111 (IEC) or 66-677 (IEEE)
  - 2 insulating strips (-6 and IEEE only, if -6 and IEC 4 strips)
  - 1 centre extrusion (IEC only)
  - 1 auxiliary cover top
  - 1 auxiliary cover bottom
  - 4 tapped strips M2.5 (6 pcs. for IEC)
  - 1 set assembly material, Torx

Description	HP	Part-No.	
		IEC	IEEE
Adaptation kit reduction, solid, without fan panel	84 HP	15K053-6	15K060-6
		15K053-7	15K060-7
15K054-6		15K061-6	
15K054-7		15K061-7	
Adaptation kit reduction, perforated*, without fan panel		15K055-6	15K062-6
		15K055-7	15K062-7

\*only bottom part ( $\frac{2}{3}$ U) is perforated

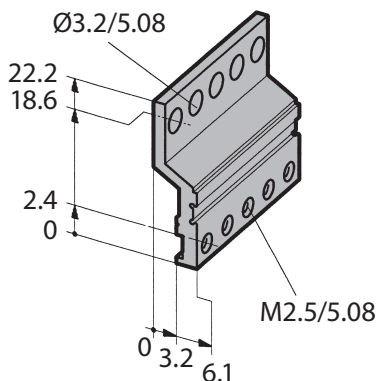
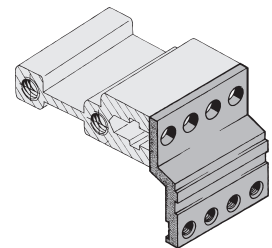
### 3.3.6.2 Additional Fan Plate

- For easy access and maintenance of the fans
- **Scope of delivery:**
  - 1 fan plate
  - 8 milled edge screws M3 x 5, Torx T10

Description	Part-No.
Additional fan plate incl. 1 set assembly material	12K737

## 3.3.7 Edge Connector Extrusion

- For use with extrusions for backplanes 66-193
- **Scope of delivery:**
  - 1 aluminium extrusion, clear passivated (conductive)



### 3.3.7 Edge Connector Extrusion

Length for HP	Length		Part-No.	
	mm	inch	clear passivated	raw
8	40.6	1.59	66-147-40	
18	91.4	3.59	66-147-41	
28	142.2	5.60	66-147-42	
42	213.4	8.40	66-147-63	
63	320.0	12.60	66-147-65	
81	411.5	16.20	66-147-22	
84	426.7	16.80	66-147-52	
	1350.0	53.14		66-147-19

### Assembly Material

Description	Part-No.
Assembly material M2.5 (for 2 supplementary extrusions)	63-214