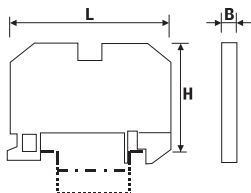


EURO WE 2,5/35 L/L/PE - Typ 43503 L/L/PE

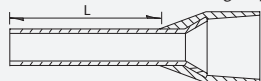
EURO WE 2,5/35 N/L/PE - Typ 43503 N/L/PE



Dimensioni / Dimensions MI Standards

Approvazioni / Approvals

Capacità di connessione / Connecting capacity



Coppia di serraggio / Max tightening torque

Tratto da spellare / Stripping length

Pz. conf. / Qty.p.pck.

Altri colori a richiesta / Special colours on request

Accessori / Accessories

Squadretta terminale std. / End bracket width=9

Squadretta terminale light / End bracket width=6

Squadretta terminale molla / Snap on end bracket

Separatore / End plate

Divisore / Separator

Conf. pettini parallelo a innesto sezionabili / Plug-in jumper package

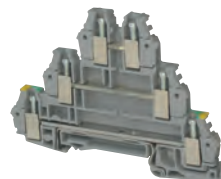
Pinza per ponticello innesto / Ratchet cutting tool for plug-in jumper Conf. pettini parallelo a vite / Screw jumper-bar package

Spina di derivazione / Insulated test socket

Identificazione / Marking Tessera / Tag

Striscia / Strip

Adattatore / Adapter



2,5 mm²

78,5 (L) x 47,5 (H) x 5,0 (B)
2,5 mm² - 250V - 24A

UL 300V 10A

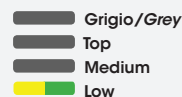
EN 60068-2-11 Test di nebbia salina per 96 ore / Salt mist test for 96 hours
Conduttori rigidi / Rigid conductors mm² 0,5 - 2,5
Conduttori flessibili / Flexible conductors mm² 0,5 - 2,5

AWG 26 - 14
Sez. con puntale / Max flexible with ferrule mm² 1,5
DIN 46228/4 L = 8 mm

4,5 lb/in - 0,5 Nm

6 mm
25

43503 L/L/PE



Codice / Code Pz. conf. / Qty.p.pck.

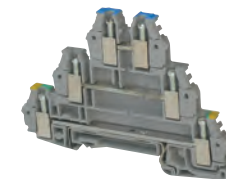
43442	50
43444	50
43447	50
43542	25

43531 /02 BLS	 RDS 	1 = 100	2 Poli / Poles
43531 /03 BLS	 RDS 	1 = 100	3 Poli / Poles
43531 /12 BLS	 RDS 	1 = 10	12 Poli / Poles
43519	 	1	

43927/01	10
----------	----

43060 - plotter	1=100	5x3 mm
43540 - plotter	1=500	5x6 mm
438MFC0506ST - Script@MI	1=1125	5x6 mm
438MFC0506TB - Script@MI	1=900	5x6 mm
438MWZ0506TBA	1=250	5x6 mm

Accessori / Accessories: pag. 127



2,5 mm²

78,5 (L) x 47,5 (H) x 5,0 (B)
2,5 mm² - 250V - 24A

UL 300V 10A

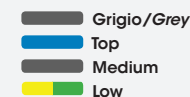
EN 60068-2-11 Test di nebbia salina per 96 ore / Salt mist test for 96 hours
Conduttori rigidi / Rigid conductors mm² 0,5 - 2,5
Conduttori flessibili / Flexible conductors mm² 0,5 - 2,5

AWG 26 - 14
Sez. con puntale / Max flexible with ferrule mm² 1,5
DIN 46228/4 L = 8 mm

4,5 lb/in - 0,5 Nm

6 mm
50

43503 N/L/PE



Codice / Code Pz. conf. / Qty.p.pck.

43442	50
43444	50
43447	50
43542	25

43531 /02 BLS	 RDS 	1 = 100	2 Poli / Poles
43531 /03 BLS	 RDS 	1 = 100	3 Poli / Poles
43531 /12 BLS	 RDS 	1 = 10	12 Poli / Poles
43519	 	1	

43927/01	10
----------	----

43060 - plotter	1=100	5x3 mm
43540 - plotter	1=500	5x6 mm
438MFC0506ST - Script@MI	1=1125	5x6 mm
438MFC0506TB - Script@MI	1=900	5x6 mm
438MWZ0506TBA	1=250	5x6 mm

Accessori / Accessories: pag. 127