

Special Features

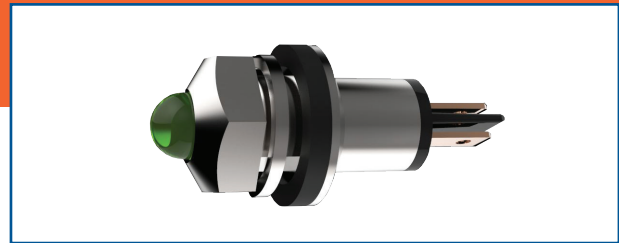
- Rugged watertight construction – sealed to IP67
- Rear mount in .315" (8.00mm) D-shaped and round hole
- Optional internal resistor for 5V-60VDC and 5V-240VAC
- Mil Spec MIL-W22759/33 wire and connector options
- Internally potted-suitable for high vibration applications

Specifications

- Mounting hole: .315" ± .002" (8.00 ± 0.05 mm) D-shaped and round hole
- Termination: 24AWG UL1061 6.0" (152.4mm) red (anode) and black (cathode) leads stripped .250" (6.35 mm) standard or LED pins or 2.8 x 0.5mm fastons (gold faston = anode and silver faston = cathode)
- Housing: Nickel-plated brass housing or black matte finish
- Panel thickness: .118" ± .006" (3.00 ± 0.15mm) Spacer available for .060" (1.52 mm) thick panel
- Mounting torque: 20 ± 2 in-lb (2.26 ± 0.23 N-mm)

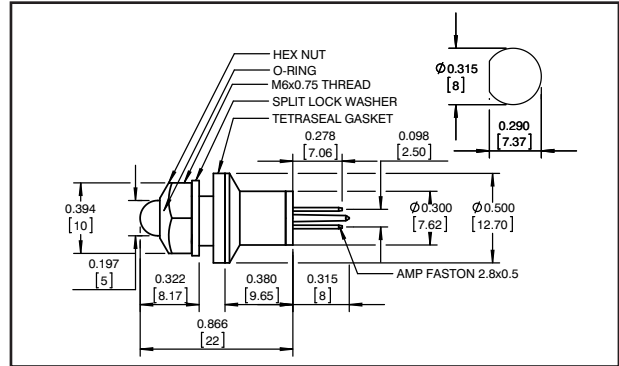
Electrical and Optical Characteristics (TA = 25°C)

LED Part #	Color	Luminous Intensity (mcd) Typ. @ I _f (mA)		V _f Typ. @ I _f (mA)	Viewing Angle 2 θ ½	Peak Wavelength (nm)	
HIGH EFFICIENCY							
3008	Red	11.0	10	1.9	10	635	
3019	Green	14.0	10	2.1	10	565	
3020	Yellow	8.0	10	2.0	10	583	
ULTRA BRIGHT – DAYLIGHT READABLE							
3056	Red	400.0	20	1.9	20	30° 660	
3055	Yellow	400.0	20	2.0	20	30° 590	
3054	Green	300.0	20	3.2	20	30° 520	
3060	Orange	600.0	20	2.1	20	30° 610	
BIPOLAR (Recommended for AC Voltages)							
0001	Red	148.0	20	1.85	20	60° 660	
0002	Yellow	130.0	20	1.9	20	60° 590	
0003	Green	50.0	20	2.1	20	60° 574	
BICOLOR (2 leaded)							
9001	Red	30.0	20	2.0	20	60° 627	
	Green	30.0	20	2.2	20		565
9002	Yellow	30.0	20	2.1	20	60° 590	
	Green	30.0	20	2.2	20		565
BICOLOR (3 leaded – common cathode)							
0909	Red	697.0	20	1.95	20	60° 650	
	Green	198.0	20	2.1	20		574
0910	Yellow	198.0	20	2.0	20	60° 590	
	Green	168.0	20	2.1	20		574
TRICOLOR (4 leaded – common cathode)							
3900	Red	547.0	20	1.9	20	60° 640	
	Yellow	397.0	20	2.0	20		590
	Green	497.0	20	3.2	20		520
BLUE							
3057	Blue	640.0	20	3.3	20	20° 468	
WHITE							
3061	White	27000.0	20	3.2	20	15° N/A	



5mm Panel Mount LED Assemblies

Package Dimensions



All dimensions are in inches (mm)

Resistor Chart

OPERATING SPECIFICATIONS				
Resistor Value Code	Voltage	Current (mA)	Resistor Value (Ohms) Green, Yellow Red, Bicolor LED	Resistor Value (Ohms) Blue, White LED
0000	2	10 or 20	None	Not Available
9900	5	10	332	
9928	5	10		121
9901	12	10	1000	
9902	12	10		715
9903	24	10	2210	
9904	24	10		1910
9905	28	10	2610	
9906	28	10		2320
9907	5	20	150	
9922	5	20		65
9908	12	20	511	
9909	12	20		357
9910	24	20	1100	
9911	24	20		953
9912	48	9	4870	
9913	48	9		4530
9914	60	7	8250	
9915	60	7		7500
0120	120VAC	7	16500	Contact WLI
0240	240VAC	3.5	66400	Contact WLI

Note: Bi-Color, Tri-Color and Full Color not available in AC voltages.

How To Order

