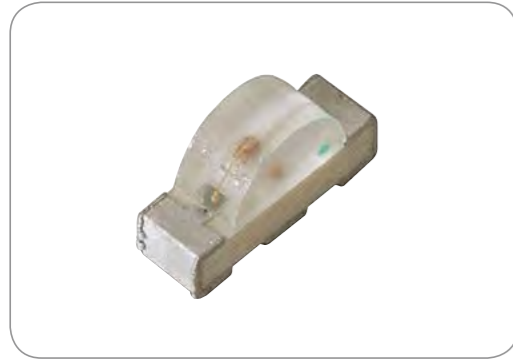


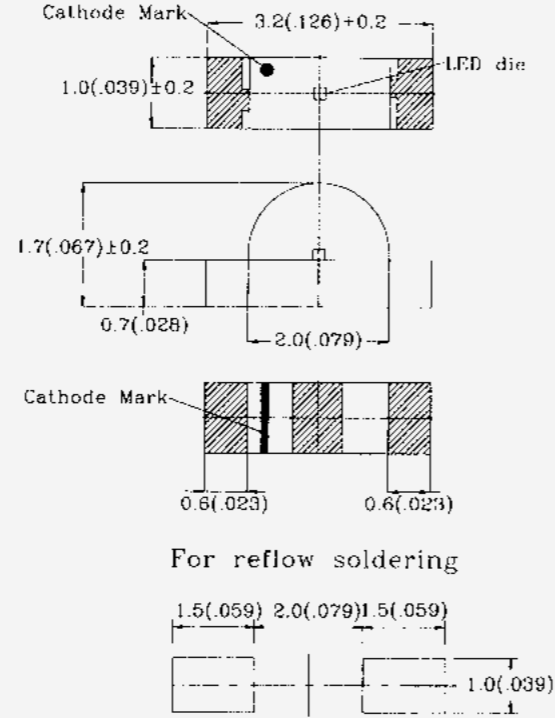
BL-HXXX4C(1204) Series



Absolute Maximum Ratings (Ta=25°C)

	UNIT	SPEC.
IF	mA	30
IFp	mA	100
V _R	V	5
Top	°C	-25~+80
Tstg	°C	-30~+85

Anode Mark For
 -BL- HSxx4C
 -BL- HDxx4C
 -BL- HFxx4C



For reflow soldering

NOTE:

- All dimensions are in millimeters(inches).
- Tolerance is ±0.10(.004") unless otherwise specified.
- Specifications are subject to change without notice.

Part No.	Chip				Lens Appearance	Electro-optical Data (At 20mA)				Viewing Angle 2θ 1/2 (deg)
	Material	Emitted Color	λ p (nm)	∠ λ (nm)		V _f (V)		I _v (mcd)		
						Typ.	Max.	Min.	Typ.	
BL - HG034C	GaP / GaP	Green	568	30	Water Clear	2.1	2.6	7.0	20.0	100°
BL - HX134C	GaP / GaP	Hi-Eff Green	568	30		2.0	2.6	8.0	25.0	
BL - HY034C	GaAsP / GaP	Yellow	585	35		2.1	2.6	4.0	13.0	
BL - HE134C	GaAsP / GaP	Hi-Eff Red	635	45		1.9	2.6	5.0	16.0	
BL - HH034C	GaP / GaP	Bright Red	700	90		2.3	2.6	1.5	4.0	
BL - HS134C	GaAlAs / GaAs	Super Red	660	20		1.7	2.6	12.0	40.0	
BL - HA034C	GaAsP / GaP	Amber	610	35		2.0	2.6	6.0	20.0	
BL - HW134C	GaP / GaP	Pure Green	555	25		2.2	2.6	1.5	5.0	
BL - HB434C	InGaP	Super Blue	470	30		3.6	4.0	25.0	70.0	
BL - HD034C	GaAlAs / GaAs	Super Red	660	20		1.8	2.6	15.0	45.0	
BL - HF034C	GaAlAs / GaAlAs	Ultra Red	660	20		2.0	2.6	20.0	60.0	
BL - HJB34C	AlGaInP	Super Orange	620	17		2.0	2.6	26.0	80.0	
BL - HJF34C	AlGaInP	Soft Orange	610	17		2.0	2.6	24.0	70.0	
BL - HKB34C	AlGaInP	Super Yellow	587	15		2.0	2.6	26.0	80.0	
BL - HKD34C	AlGaInP	Super Yellow	595	15		2.0	2.6	26.0	80.0	

- **DEVICE NUMBER :** BL - Hxxx4C-TR
- **FEATURES :**
 - Compatible with automatic placement equipment
 - Surface mount assembly lamp
 - High efficiency low power consumption
 - Long life solid state reliability
- **TAPPING AND PACKAGING SPECIFICATION**

Item	Symbol	Specification			
		Minimum		Maximum	
		mm	inch	mm	inch
Tape Feed Hole Diameter (DIA)	D ₀	1.40	0.055	1.60	0.063
Feed Hole Location	E	1.65	0.064	1.85	0.073
Centers Line Dimensions Length Direction	F	3.45	0.135	3.55	0.139
Compartment Depth	K ₀	1.21	0.048	1.41	0.055
Compartment Pitch	P	3.90	0.153	4.10	0.161
Sprocket Hole Diameter	P ₀	3.90	0.153	4.10	0.161
Centers Line Dimensions Length Direction	P ₂	1.95	0.076	2.05	0.080
Carrier Tape Thickness	t	-	-	0.30	0.012
Carrier Tape Width	W	7.70	0.303	8.30	0.326
Flange Diameter	A	178.0	7.008	180.0	7.087
Hub Spindle Hole	C	12.50	0.492	13.50	0.531
Hub Diameter	D ₂	70.00	2.755	72.00	2.830
Fixing Tape Width	W ₁	5.25	0.206	5.35	0.210
Flange Space Between Flanges	T	16.00	0.629	18.40	0.724
Compartment Length	A ₀	2.35	0.093	2.45	0.096
Compartment Width	B ₀	3.75	0.132	3.45	0.136

