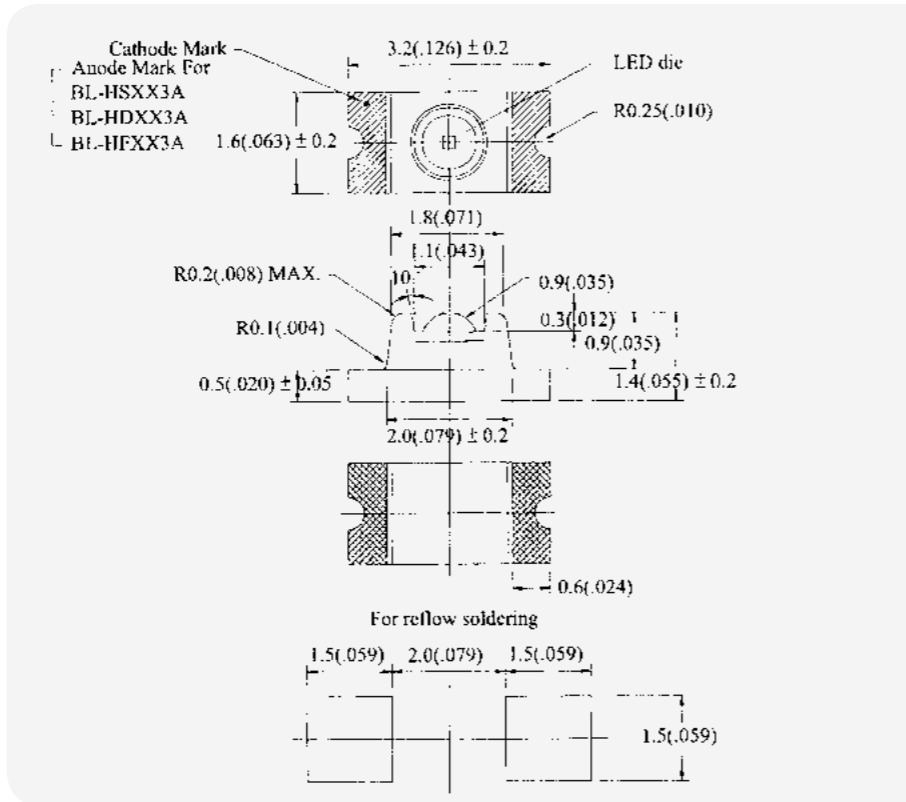


## BL-HXXX3A(1206) Series



### Absolute Maximum Ratings (Ta=25°C)

	UNIT	SPEC.
IF	mA	30
IFp	mA	100
V <sub>R</sub>	V	5
Top	°C	-25~+80
Tstg	°C	-30~+85



### NOTE:

1. All dimensions are in millimeters(inches).
2. Tolerance is ±0.10(0.004") unless otherwise specified.
3. Specifications are subject to change without notice.

Part No.	Chip		Lens Appearance		Electro-optical Data (At 20mA)				Viewing Angle 2θ 1/2 (deg)
	Material	Emitted Color	λ <sub>p</sub> (nm)	∠λ (nm)	V <sub>f</sub> (V)		I <sub>v</sub> (mcd)		
					Typ.	Max.	Min.	Typ.	
BL - HG033A	GaP / GaP	Green	568	30	2.1	2.6	10.0	30.0	Water Clear 70°
BL - HX133A	GaP / GaP	Hi-Eff Green	568	30	2.0	2.6	12.0	35.0	
BL - HY033A	GaAsP / GaP	Yellow	585	35	2.1	2.6	6.0	18.0	
BL - HE133A	GaAsP / GaP	Hi-Eff Red	635	45	1.9	2.6	8.0	25.0	
BL - HH033A	GaP / GaP	Bright Red	700	90	2.3	2.6	3.0	7.5	
BL - HS133A	GaAlAs / GaAs	Super Red	660	20	1.7	2.6	17.0	50.0	
BL - HA033A	GaAsP / GaP	Amber	610	35	2.0	2.6	10.0	30.0	
BL - HW133A	GaP / GaP	Pure Green	555	25	2.2	2.6	4.0	10.0	
BL - HB433A	InGaN / Sic	Super Blue	470	30	3.6	4.0	25.0	70.0	
BL - HD033A	GaAlAs / GaAs	Super Red	660	20	1.8	2.6	20.0	60.0	
BL - HF033A	GaAlAs / GaAlAs	Ultra Red	660	20	2.0	2.6	30.0	90.0	
BL - HJB33A	AlGaInP	Super Orange	620	17	2.0	2.6	45.0	140.0	
BL - HJF33A	AlGaInP	Soft Orange	610	17	2.0	2.6	43.0	130.0	
BL - HKB33A	AlGaInP	Super Yellow	587	15	2.0	2.6	45.0	140.0	
BL - HKD33A	AlGaInP	Super Yellow	595	15	2.0	2.6	45.0	140.0	

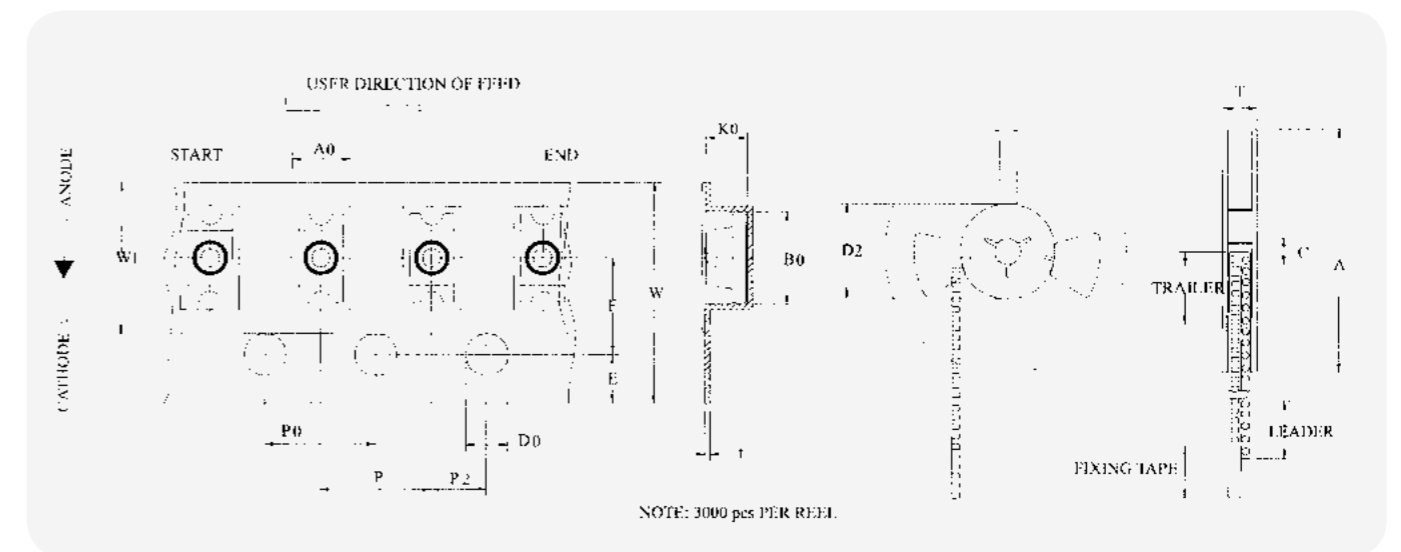
• DEVICE NUMBER : BL - Hxxx3A-TR

### FEATURES :

- Compatible with automatic placement equipment
- Surface mount assembly lamp
- High efficiency low power consumption
- Long life solid state reliability

### TAPPING AND PACKAGING SPECIFICATION

Item	Symbol	Specification			
		Minimum		Maximum	
		mm	inch	mm	inch
Tape Feed Hole Diameter (DIA)	D <sub>0</sub>	1.40	0.055	1.60	0.063
Feed Hole Location	E	1.65	0.064	1.85	0.073
Centers Line Dimensions Length Direction	F	3.45	0.135	3.55	0.139
Compartment Depth	K <sub>0</sub>	1.50	0.059	1.55	0.061
Compartment Pitch	P	3.90	0.153	4.10	0.161
Sprocket Hole Diameter	P <sub>0</sub>	3.90	0.153	4.10	0.161
Centers Line Dimensions Length Direction	P <sub>2</sub>	1.95	0.076	2.05	0.080
Carrier Tape Thickness	t	-	-	0.30	0.012
Carrier Tape Width	W	7.70	0.303	8.30	0.326
Flange Diameter	A	178.0	7.008	180.0	7.087
Hub Spindle Hole	C	12.50	0.492	13.50	0.531
Hub Diameter	D <sub>2</sub>	70.00	2.755	72.00	2.830
Fixing Tape Width	W <sub>1</sub>	5.25	0.206	5.35	0.210
Flange Space Between Flanges	T	12.50	0.492	13.50	0.531
Compartment Length	A <sub>0</sub>	1.65	0.065	1.75	0.068
Compartment Width	B <sub>0</sub>	3.75	0.147	3.85	0.151



NOTE: 3000 pcs PER REEL.