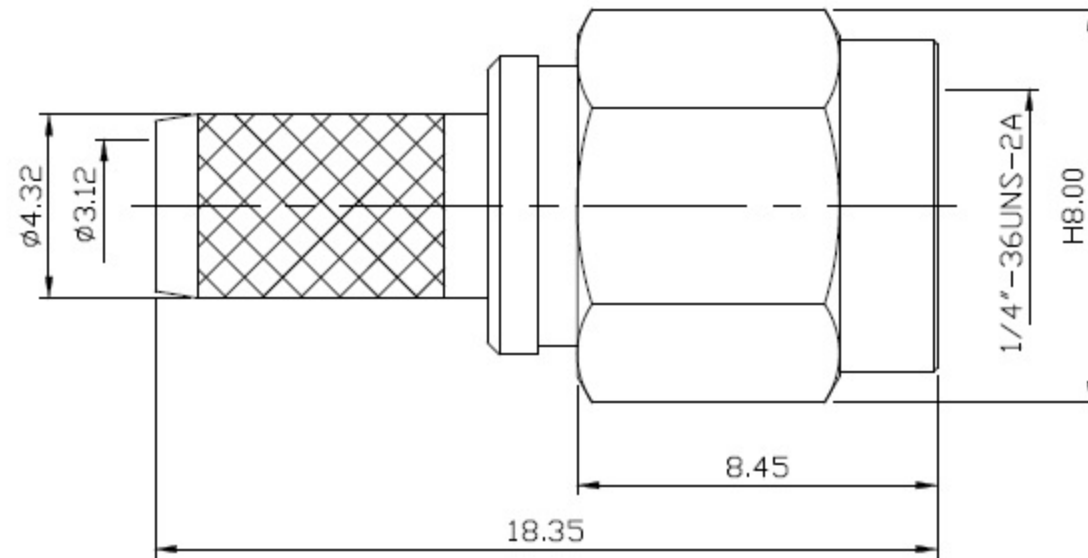
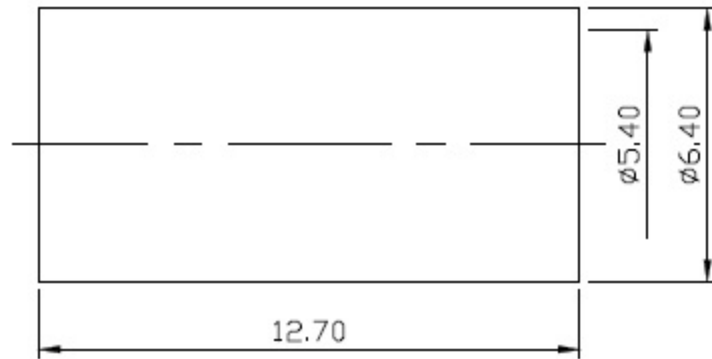
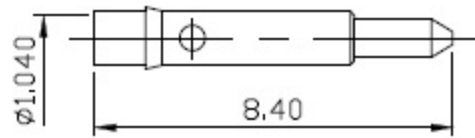


1. INTERFACE PER MIL-STD-348
2. COUPLING NUT RETENTION: 15 INCH*LBS
3. COUPLING NUT RETENTION: 60 LBS AXIAL
4. CONTACT RETENTION: 6 LBS AXIAL
5. INSULATOR RETENTION: 6 LBS AXIAL
6. DUREBILITY: TEST AFLER 100 CYCLES



*SHELL

MATERIAL : BODY-BRASS
 INSULATOR-TEFLON
 CONTACT-BRASS
 SHELL-BRASS
 C WASHER-Be Cu
 SI RUBBER-SILICONE
 RING-BRASS

FINISH : BODY-GOLD PLATING OVER NICKEL
 CONTACT-GOLD PLATING OVER NICKEL
 SHELL-GOLD PLATING OVER NICKEL
 C WASHER-GOLD PLATING OVER NICKEL
 RING-GOLD PLATING OVER NICKEL

DIMENSIONS ARE IN MILLIMETERS		TOLERANCE		SCHMID-M	
· × ±0.5	ANGLE ±3°	SCALE	5:1	TITLE SMA Straight Crimp for RG58u, RG 58A/u, RG141A/u	
· × × ±0.1		REV	A-3	DRAWING NO SMA-1104-TGG	
· × × × ±0.05		DATE 100.04.09		FILE NO	
DRAWN		DATE			
APPROVAL		DATE			