

MATERIAL : BODY-BRASS

SLEEVE-BRASS

INSULATOR-TEFLON

CONTACT-BERYLLIUM COPPER

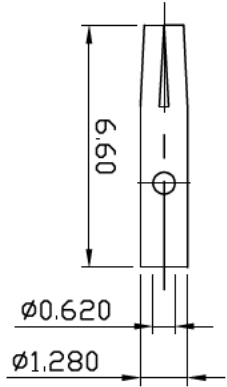
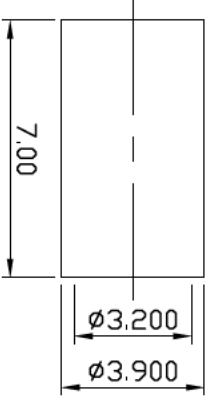
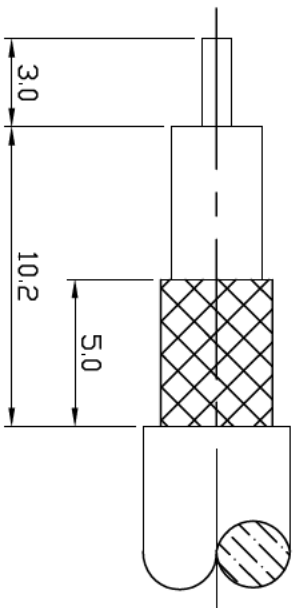
FERRULE-BRASS

FINISH : BODY-GOLD PLATING OVER NICKEL

SLEEVE-GOLD PLATING OVER NICKEL

CONTACT-GOLD PLATING OVER NICKEL

FERRULE-GOLD PLATING OVER NICKEL



DIMENSIONS ARE IN MILLIMETERS
TOLERANCE

..x ..x ..x	±0.5	ANGLE ±3°	SCALE	5:1
..xxx ..xxx	±0.1		REV	A-0
	±0.05		DATE	92.08.26

DRAWN	DATE	92.08.26
APPROVAL	DATE	

SCHMID-M

TITLE
SMA PC MOUNT R/A CRIMP FOR
RG174u, RG316u

DRAWING NO
SMA-1249-TGG

FILE NO