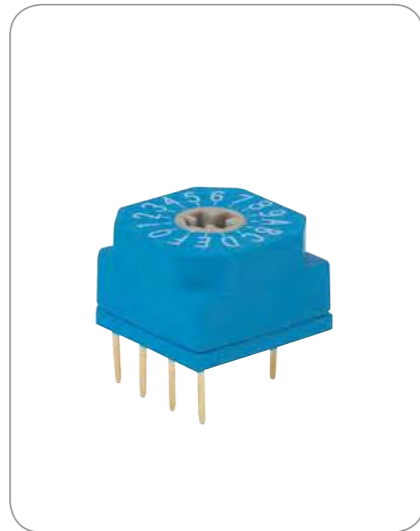
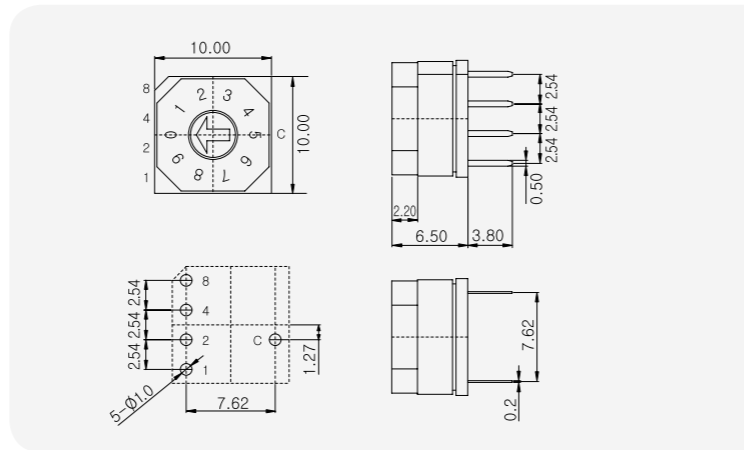


F

FDR Series
(1x4 Terminal)



1 Type



How to Order

Type	Actuators	Code	Position	Solder Condition
1	2	3	4	5
F	D	R	10	-

Ex)

General Specification

- Rating**
Voltage 42V
150mA (Switching)
200mA (None-Switching)
- Contact Resistance**
80mΩ Max
- Insulation Resistance**
100MΩ Min
- Operating Force**
700gf Max
- Life Cycle**
10,000 steps
- Solder Condition**
Reflow Soldering : 10s/260°C
Iron Soldering : 4s/350°C
Wave Soldering : 5s/280°C
- Sealing**
IP67 (Dust & Water Proof)
*Except Cross Type of Actuator ("E" Type)

3 General Code

R Real Code

Position	Real Code
04 Position	C 1 2
06 Position	C 1 2 4 8
8 Position	C 1 2 4 8
10 Position	C 1 2 4 8
16 Position	C 1 2 4 8

C Complement Code

Position	Complement Code
04 Position	C 1 2
06 Position	C 1 2 4 8
8 Position	C 1 2 4 8
10 Position	C 1 2 4 8
16 Position	C 1 2 4 8

S

Position	Decimal(04 Position Terminal)
1	C 1 2 3 4
2	
3	
4	

4 Position

4 Position

6 Position

8 Position

10 Position

16 Position

5 Solder Conditions

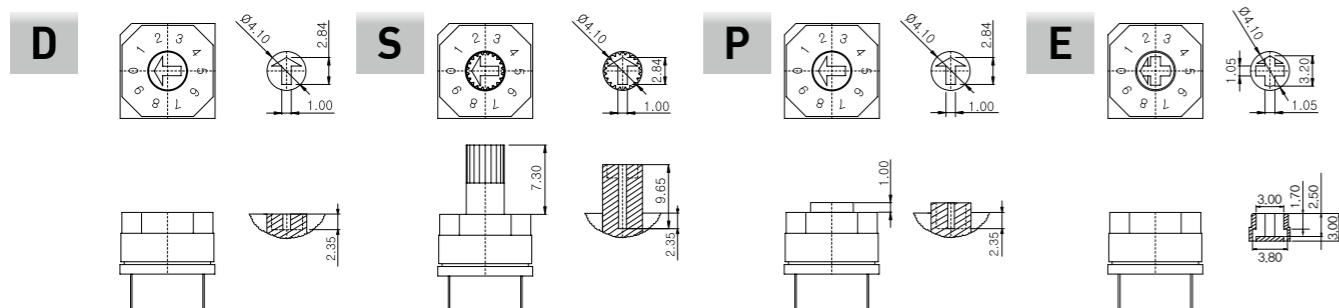
-

T

PCB Hole Type : Iron Soldering : 2s/340°C
Wave Soldering : 5s/280°C

Through Hole Reflow : Reflow Soldering : 10s/260°C
Iron Soldering : 4s/350°C
Wave Soldering : 5s/280°C

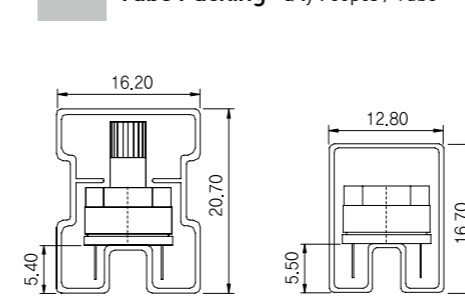
2 Actuators



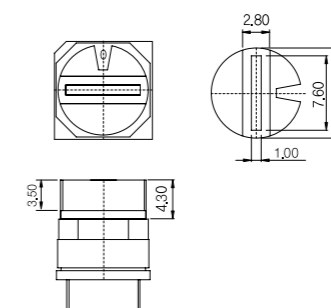
6 Packing

- Tube Packing Q'ty : 50pcs / Tube

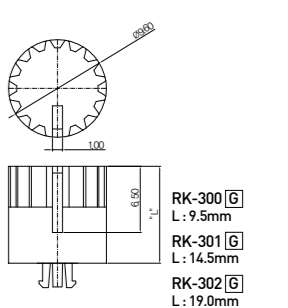
RK-100 G



RK-200 G



RK-300 G



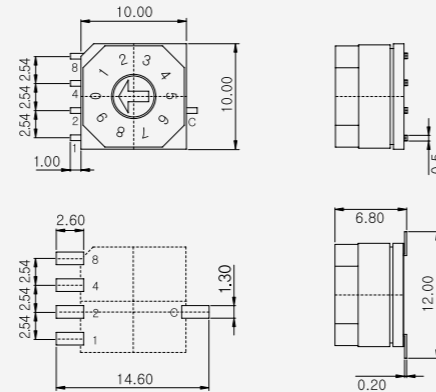
*Applicable to only 'E' Actuators
*Should be mounted after soldering

G : Gray R : Red K : Black
Y : Yellow B : Blue C : Clear

F FDR Series (SMD Type) (1×4 Terminal)



1 Type



How to Order

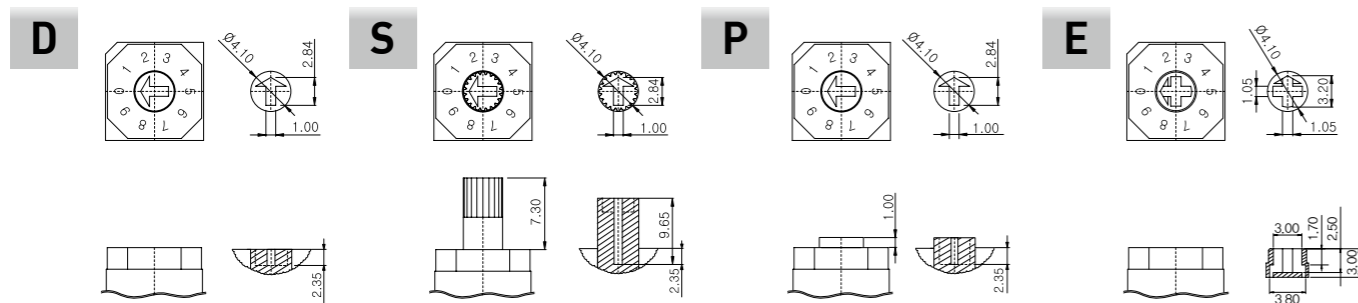
Type	Actuators	Code	Position	Terminals	Packing
1	2	3	4	5	6
F	D	R	10	S	TR

Ex) **F D R 10 S TR**

General Specification

- Rating**
Voltage 42V
150mA (Switching)
200mA (None-Switching)
- Contact Resistance**
80mΩ Max
- Insulation Resistance**
100MΩ Min
- Operating Force**
700gf Max
- Life Cycle**
10,000 steps
- Solder Condition**
Reflow Soldering : 10s/260°C
Iron Soldering : 4s/350°C
Wave Soldering : 5s/280°C
- Sealing**
IP67 (Dust & Water Proof)
*Except Cross Type of Actuator ("E" Type)

2 Actuators



3 General Code

R Real Code

Position	Real Code
04 Position	C 1 2
06 Position	C 1 2 4 8
8 Position	C 1 2 4 8
10 Position	C 1 2 4 8
16 Position	C 1 2 4 8

C Complement Code

Position	Complement Code
04 Position	C 1 2
06 Position	C 1 2 4 8
8 Position	C 1 2 4 8
10 Position	C 1 2 4 8
16 Position	C 1 2 4 8

S

Position	Decimal(04 Position) (Terminal)
1	C 1 2 3 4
2	
3	
4	

4 Position

4 Position

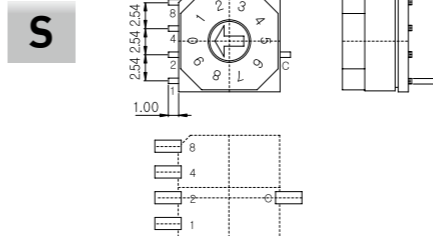
6 Position

8 Position

10 Position

16 Position

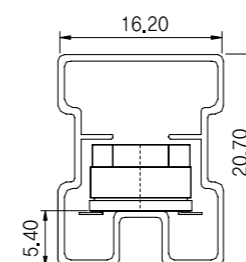
5 Terminals



6 Packing

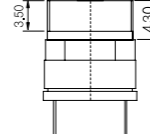
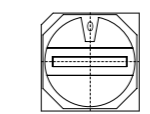
- Tube Packing
Q'ty : 50pcs / Tube

TR Reel Packing
(See Page 28)



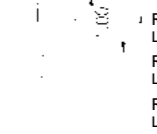
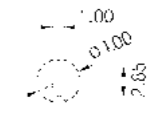
Accessories

RK-100 G



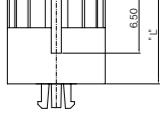
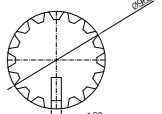
*Applicable to only 'E' Actuators
*Should be mounted after soldering

RK-200 G



G: Gray R: Red K: Black
Y: Yellow B: Blue C: Clear

RK-300 G



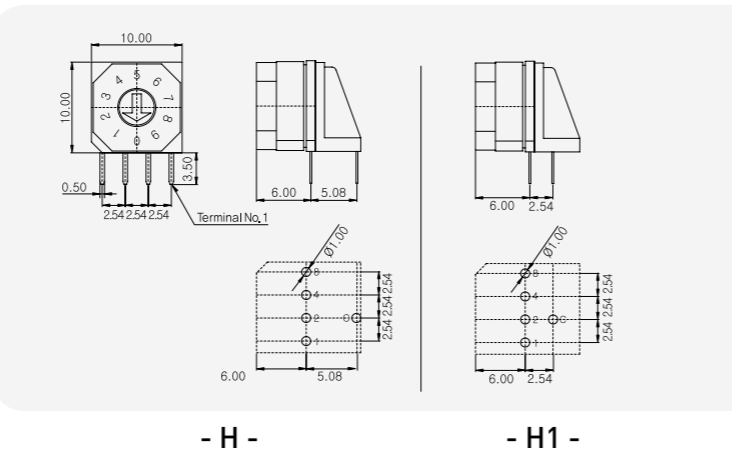
RK-200 G L: 7.3mm
RK-201 G L: 11.6mm
RK-202 G L: 13.3mm
RK-300 G L: 9.5mm
RK-301 G L: 14.5mm
RK-302 G L: 19.0mm

F

FDR Series
(Angle Type)
(1×4 Terminal)



1 Type



How to Order

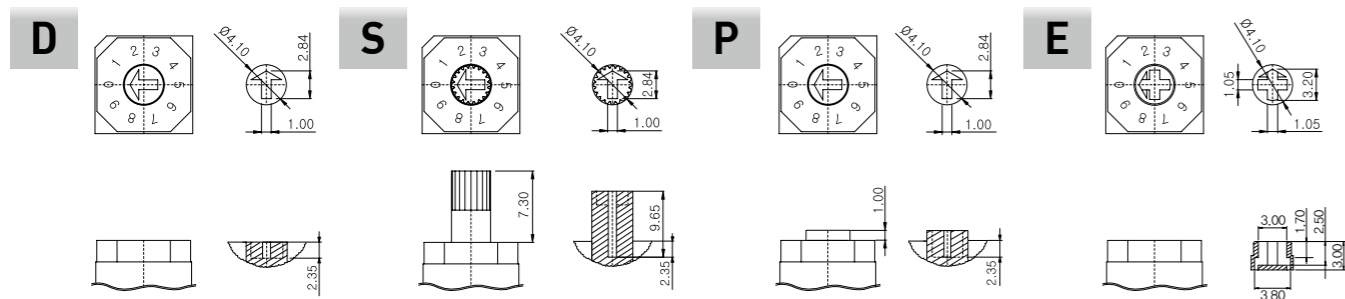
Type	Actuators	Code	Position	Terminals	Solder Condition
1	2	3	4	5	6
F	D	R	10	H	-

Ex)

General Specification

- | | |
|---------------------------------|--|
| 1. Rating | Voltage 42V
150mA (Switching)
200mA (None-Switching) |
| 2. Contact Resistance | 80mΩ Max |
| 3. Insulation Resistance | 100MΩ Min |
| 4. Operating Force | 700gf Max |
| 5. Life Cycle | 10,000 steps |
| 6. Solder Condition | Reflow Soldering : 10s/260°C
Iron Soldering : 4s/350°C
Wave Soldering : 5s/280°C |
| 7. Sealing | IP67 (Dust & Water Proof)
*Except Cross Type of Actuator ("E" Type) |

2 Actuators



3 General Code

R Real Code

Position	Real Code
04 Position	C 1 2
06 Position	C 1 2 4 8
8 Position	C 1 2 4 8
10 Position	C 1 2 4 8
16 Position	C 1 2 4 8

C Complement Code

Position	Complement Code
04 Position	C 1 2
06 Position	C 1 2 4 8
8 Position	C 1 2 4 8
10 Position	C 1 2 4 8
16 Position	C 1 2 4 8
Decimal(04 Position) (Terminal)	C 1 2 3 4

4 Position

- 4 Position 6 Position 8 Position 10 Position 16 Position

5 Terminals

- H** Angle Type (5.08) **H1** Angle Type (2.54)

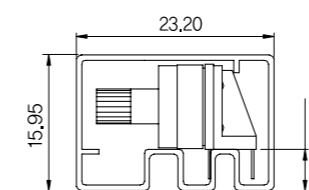


6 Solder Conditions

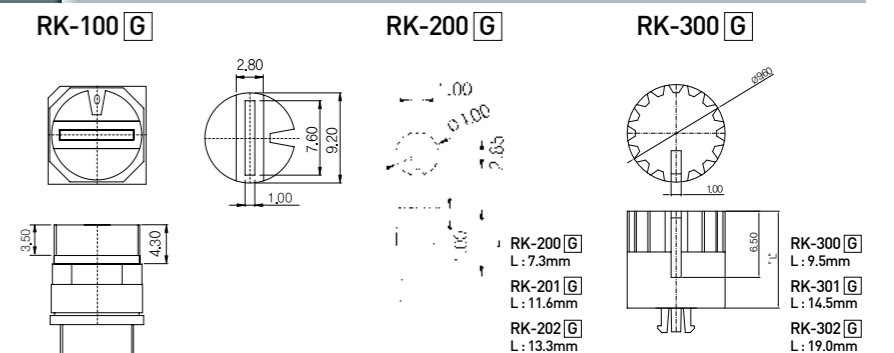
- PCB Hole Type : Iron Soldering : 2s/340°C
Wave Soldering : 5s/280°C
- T** Through Hole Reflow : Reflow Soldering : 10s/260°C
Iron Soldering : 4s/350°C
Wave Soldering : 5s/280°C

7 Packing

- Tube Packing
Q'ty : 50pcs / Tube

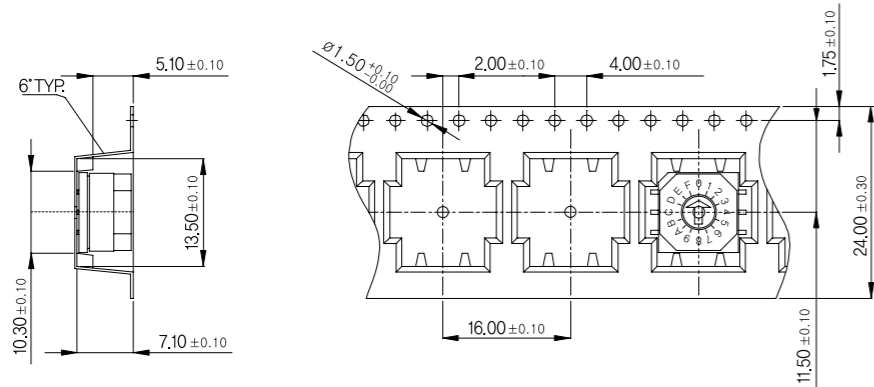


Accessories

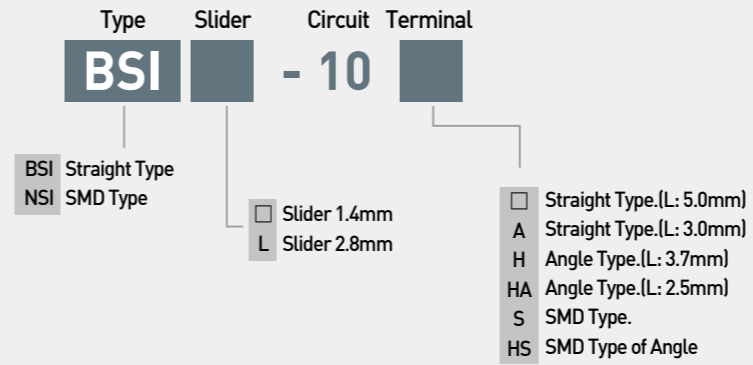


- *Applicable to only 'E' Actuators
*Should be mounted after soldering
- G : Gray R : Red K : Black
Y : Yellow B : Blue C : Clear

10 Pitch Cumulative Tolerance on Tape ±0.2

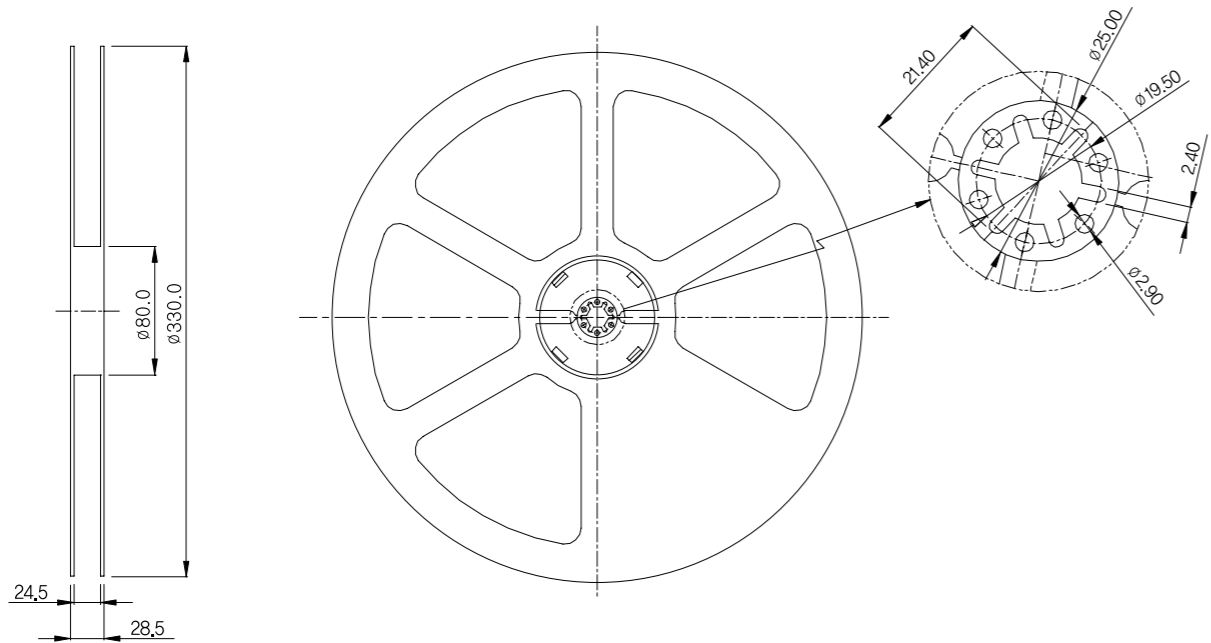


Order Code

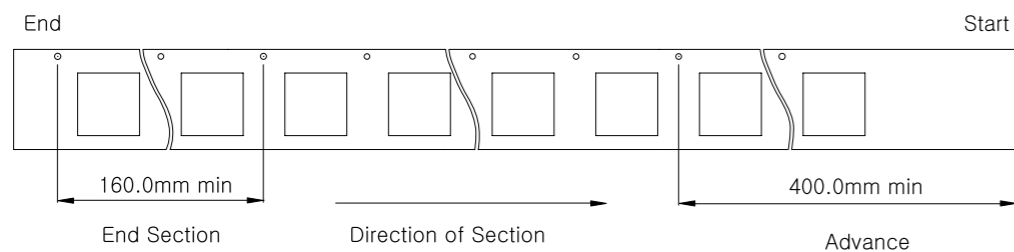


General Specification

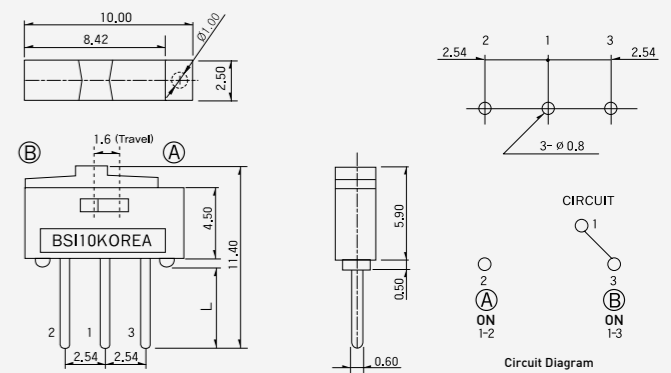
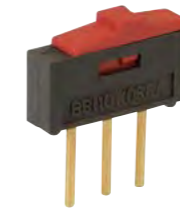
- 1. Rating AC,DC 12V 0.5A~ 24V 0.3A
- 2. Contact Resistance Max 30m Ω
- 3. Operating Force 250gf ± 150gf
- 4. Travel 1.6mm
- 5. Life Cycle 2,000cycle(with load)
- 6. Solder Conditions 5sec, 270 C



Apply to	Units(pcs)
SDR-S(SMD) Type	600
TDR-S(SMD) Type	600
FDR-S(SMD) Type	600
SSR-S(SMD) Type	180
SPR-S(SMD) Type	350



BSI-10



BSI-10H

