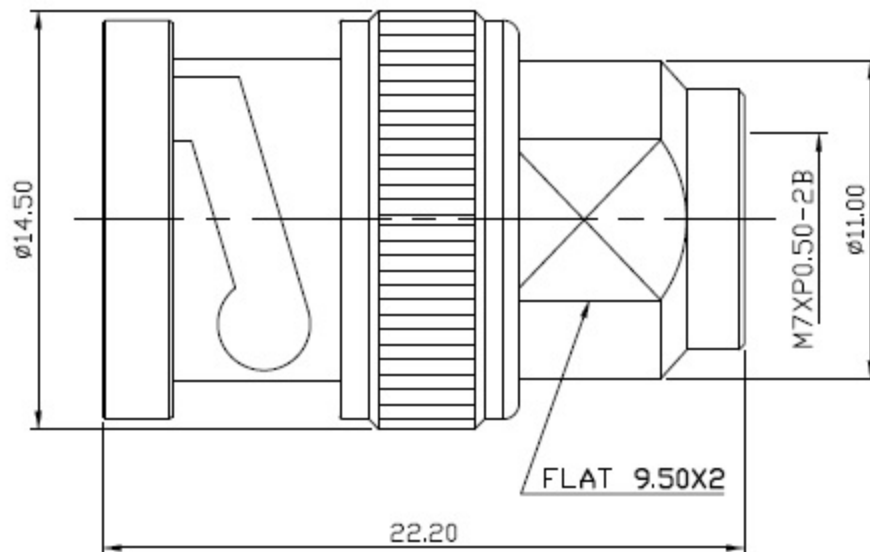
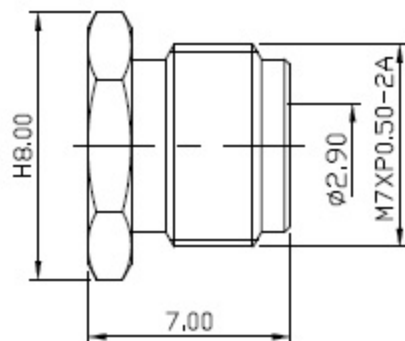
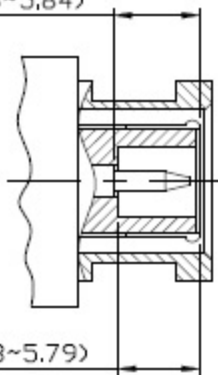
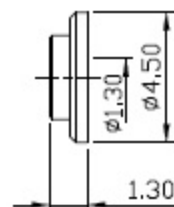
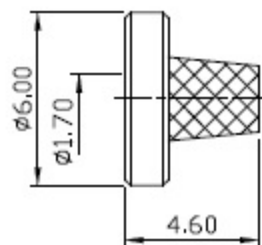


(5.33~5.84)

(5.28~5.79)



MATERIAL : BODY-BRASS  
 CONTACT-BRASS  
 INSULATOR-TEFLON X2  
 SLEEVE-BRASS  
 NUT-BRASS  
 SHELL-BRASS  
 GASKET-RUBBER  
 WASHER-BRASS X2  
 SPRING WASHER-SK-5



FINISH : BODY-NICKEL PLATING  
 NUT-NICKEL PLATING  
 SHELL-NICKEL PLATING  
 WASHER-NICKEL PLATING X2  
 SPRING WASHER-NICKEL PLATING  
 CONTACT-GOLD PLATING OVER NICKEL  
 SLEEVE-GOLD PLATING OVER NICKEL

DIMENSIONS ARE IN MILLIMETERS			<b>SCHMID-M</b>
TOLERANCE			
· × ±0.5	ANGLE ±3°	SCALE 5:1	TITLE BNC Straight Plug Clamp for RG174u, RG188u, RG179u, RG316u
· × × ±0.1		REV A-1	
· × × × ±0.05		DRAWN	DATE 90.08.17
APPROVAL	DATE	FILE NO	