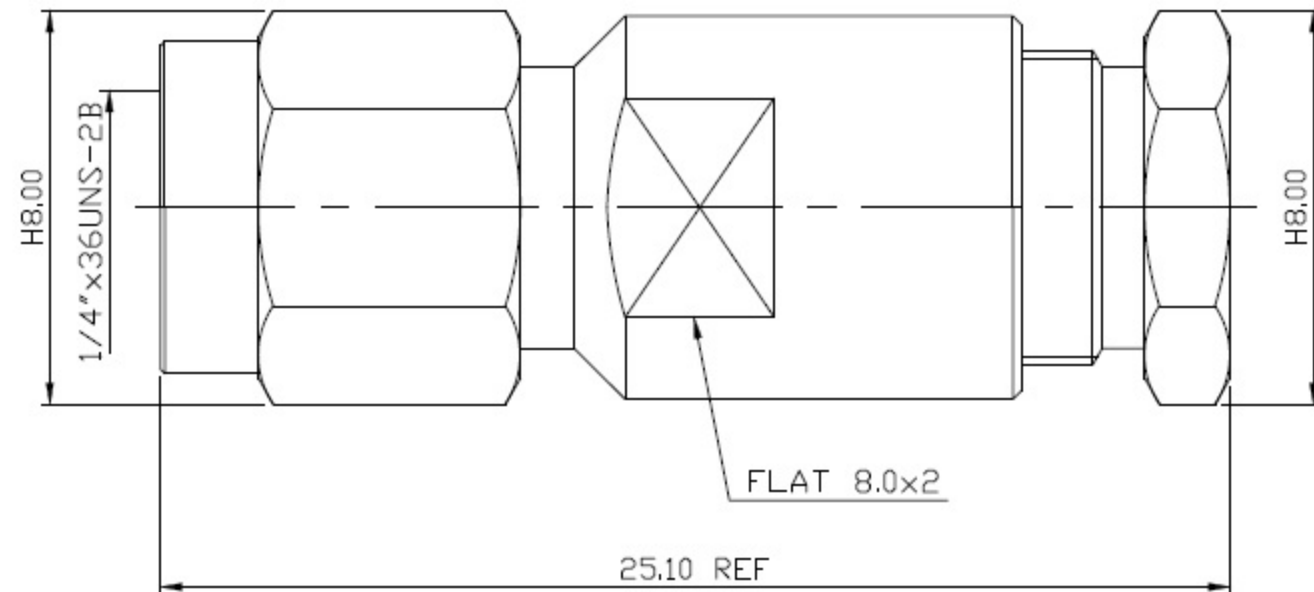
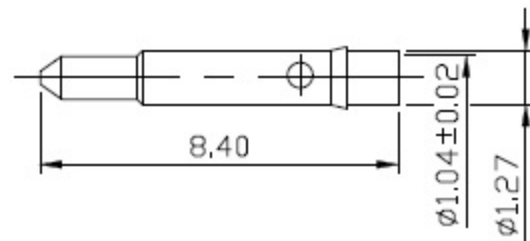


1. INTERFACE PER MIL-STD-348
2. COUPLING NUT RETENTION: 15 INCH*LBS
3. COUPLING NUT RETENTION: 60 LBS AXIAL
4. CONTACT RETENTION: 6 LBS AXIAL
5. INSULATOR RETENTION: 6 LBS AXIAL
6. DUREBILITY: TEST AFLER 100 CYCLES



MATERIAL : BODY-BRASS
 CONTACT-BRASS
 INSULATOR-TEFLON
 SLEEVE-BRASS
 SHELL-BRASS
 C WASHER-SUS304
 NUT-BRASS
 WASHER-BRASS
 SI RUBBER-SILICONE

FINISH : BODY-GOLD PLATING OVER NICKEL
 SHELL-GOLD PLATING OVER NICKEL
 CONTACT-GOLD PLATING OVER NICKEL
 SLEEVE-GOLD PLATING OVER NICKEL
 WASHER-GOLD PLATING OVER NICKEL
 NUT-GOLD PLATING OVER NICKEL

DIMENSIONS ARE IN MILLIMETERS		SCHMID-M	
TOLERANCE		TITLE SMA Straight Plug Clamp for RG142B/u	
· × ±0.5	ANGLE ±3°	SCALE 5:1	DRAWING NO SMA-2103-TGN
· × × ±0.1		REV A-2	
· × × × ±0.05		DATE 100.04.09	FILE NO
DRAWN	APPROVAL	DATE	